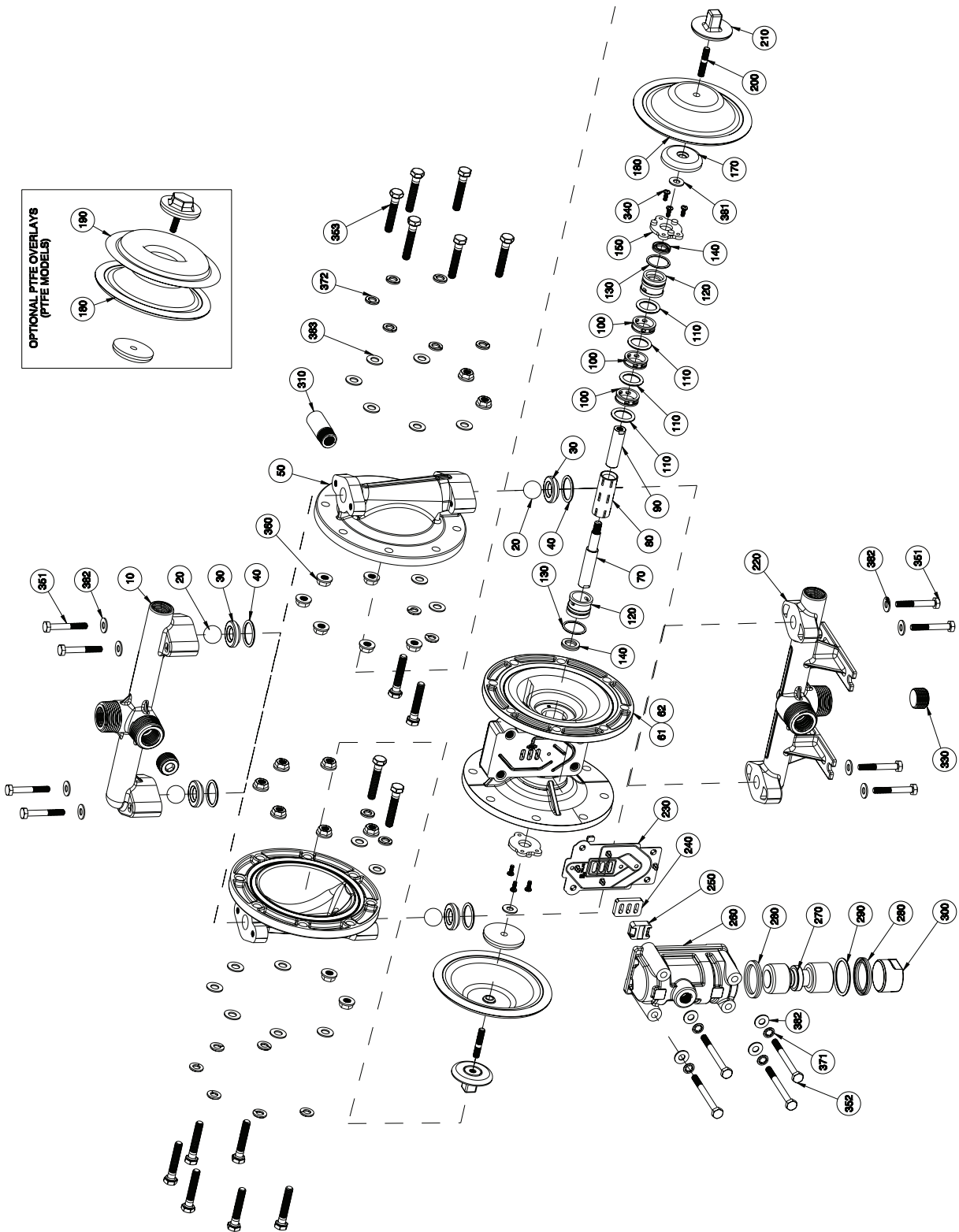


# EXPLODED VIEW & PARTS LIST

## ALUMINUM AND STAINLESS STEEL PUMPS WITH ALUMINUM CENTER SECTION (A075-\*A\*-\*\*\*\*-\*\*\*)



# PARTS LIST - ALUMINUM AND STAINLESS STEEL PUMPS WITH ALUMINUM CENTER SECTION (A075-\*A\*-\*\*\*\*-\*\*\*)

ITEM	DESCRIPTION	QTY	PUMP MODEL	PART NO.	MATERIAL
10	DISCHARGE MANIFOLD	1	A075-N*A-****-0**	11329-A075-20-N	Aluminum
			A075-B*A-****-0**	11329-A075-20-B	Aluminum
			A075-N*3-****-0**	11329-A075-26-N	Stainless Steel
			A075-B*3-****-0**	11329-A075-26-T	Stainless Steel
20	BALL	4	A075-***_V**_***	11000-13	FKM
			A075-***_G**_***	11000-19	Geolast®
			A075-***_C**_***	11000-23	Santoprene®
			A075-***_3**_***	11000-26	Stainless Steel
			A075-***_T**_***	11000-45	PTFE
30	VALVE SEAT	4	A075-***_**A*_***	10900-20	Aluminum
			A075-***_**3*_***	10900-26	Stainless Steel
			A075-***_**P*_***	10900-40	Polypropylene
			A075-***_**Y*_***	10900-42	Nylon
			A075-***_**K*_***	10900-56	PVDF
40	O-RING (VALVE SEAT)	4	A075-***_***N_***	11904-11	Nitrile
			A075-***_***V_***	11904-13	FKM
			A075-***_***E_***	11904-15	EPDM
			A075-***_***T_***	11904-17	PTFE
50	OUTER CHAMBER	2	A075-**A-****_***	10720-20	Aluminum
			A075-**3-****_***	10720-26	Stainless Steel
61 & 62	INTERMEDIATE	1	A075-*A*-****_***	11527-20	Aluminum
70 & 90	DIAPHRAGM ROD ASSEMBLY	1	ALL MODELS	33000-00	Stainless Steel
80	PILOT SLEEVE	1	ALL MODELS	10105-31 Δ	Acetel
100	INNER SPACER (PILOT SLEEVE)	3	ALL MODELS	10203-40 Δ	Polypropylene
110	O-RING (PILOT SLEEVE)	4	ALL MODELS	11920-16 Δ	Urethane
120	END SPACER (PILOT SLEEVE)	2	ALL MODELS	10204-40 Δ	Polypropylene
130	O-RING (END SPACER)	2	ALL MODELS	11923-11 Δ	Nitrile
140	LIP SEAL (DIAPHRAGM ROD)	2	ALL MODELS	12000-76 Δ	Nitrile
150	RETAINING PLATE	2	ALL MODELS	12708-54	Nylon
160	N/A				
170	INNER DIAPHRAGM PLATE	2	ALL MODELS	11100-40	Polypropylene
180	DIAPHRAGM	2	A075-***_V***_***	10600-13	FKM
			A075-***_G***_***	10600-19	Geolast®
			A075-***_N***_***	10600-21	Nitrile
			A075-***_S***_***	10600-23	Santoprene®
			A075-***_T***_***	10600-23	Santoprene®
190	OVERLAY (OPTIONAL)	2	A075-***_T***_***	11400-59	PTFE
200 & 210	OUTER DIAPHRAGM PLATE	2	A075-**A-****_***	11208-20	Aluminum
			A075-**3-****_***	11208-26	Stainless Steel
220	SUCTION MANIFOLD	1	A075-N*A-****_***	11328-A075-20-N	Aluminum
			A075-B*A-****_***	11328-A075-20-B	Aluminum
			A075-N*3-****_***	11328-A075-26-N	Stainless Steel
			A075-B*3-****_***	11328-A075-26-T	Stainless Steel
230	AIR VALVE GASKET	1	ALL MODELS	12126-19 ‡	Nitrile
240	SHUTTLE PLATE	1	ALL MODELS	10416-77 ‡	Ceramic
250	SHUTTLE	1	ALL MODELS	10415-00 ‡	Special
260	AIR VALVE BODY	1	A075-*A*-****_***	42001-20 ‡	Aluminum
270	AIR VALVE SPOOL	1	ALL MODELS	10480-31 ‡	Acetel
280	LIP SEAL (AIR VALVE)	2	ALL MODELS	12003-76 ‡	Nitrile
290	O-RING (AIR VALVE END PLUG)	1	ALL MODELS	11913-11 ‡	Nitrile

# PARTS LIST - ALUMINUM AND STAINLESS STEEL PUMPS WITH ALUMINUM CENTER SECTION (A075-\*A\*-\*\*\*\*-\*\*\*)

ITEM	DESCRIPTION	QTY	PUMP MODEL	PART NO.	MATERIAL
300	AIR VALVE END PLUG	1	A075-*A*-****-***	11706-20 ‡	Aluminum
310	MUFFLER MUFFLER (METAL)	1	ALL MODELS Optional	13008-00 13002-00	Standard Metal
320	N/A				
340	PAN-HEAD MACH SCREW (#6-32 x 7/16)	6	A075-**A-****-***	12585-26	Stainless Steel
351	HEX HEAD CAP SCREW (1/4"-20 x 1-3/4")	8	A075-**A-****-*0* A075-**3-****-*0*	12500-25 12500-26	Plated Steel Stainless Steel
352	HEX HEAD CAP SCREW (1/4"-20 x 2-3/4")	4	A075-*AA-****-*0* A075-*A3-****-*0*	12576-25 12576-26	Plated Steel Stainless Steel
353	HEX HEAD CAP SCREW (5/16-18 x 1-3/4")	16	A075-**A-****-*0* A075-**3-****-*0*	12503-25 12503-26	Plated Steel Stainless Steel
360	HEX FLANGE NUT (5/16"-18)	16	A075-**A-****-*0* A075-**3-****-*0*	12608-25 12608-26	Plated Steel Stainless Steel
371	LOCK WASHER (1/4")	4	A075-**A-****-*0* A075-**3-****-*0*	12350-25 12350-26	Plated Steel Stainless Steel
372	WASHER, SPLIT LOCK (5/16")	16	A075-**A-****-*0* A075-**3-****-*0*	12313-25 12313-26	Plated Steel Stainless Steel
381	WASHER (1/4")	2	ALL MODELS	12300-26	Stainless Steel
382	WASHER (1/4")	12 12	A075-**A-****-*0* A075-**3-****-*0*	12300-25 12300-26	Plated Steel Stainless Steel
383	WASHER (5/16")	16	A075-**A-****-*0* A075-**3-****-*0*	12310-25 12310-26	Plated Steel Stainless Steel
390	N/A				
400	GROUNDING LUG (NOT SHOWN) Magnalube® .75 oz. (As Required)	1	OPTIONAL ALL MODELS	13481-20 13404-00	Aluminum Grease

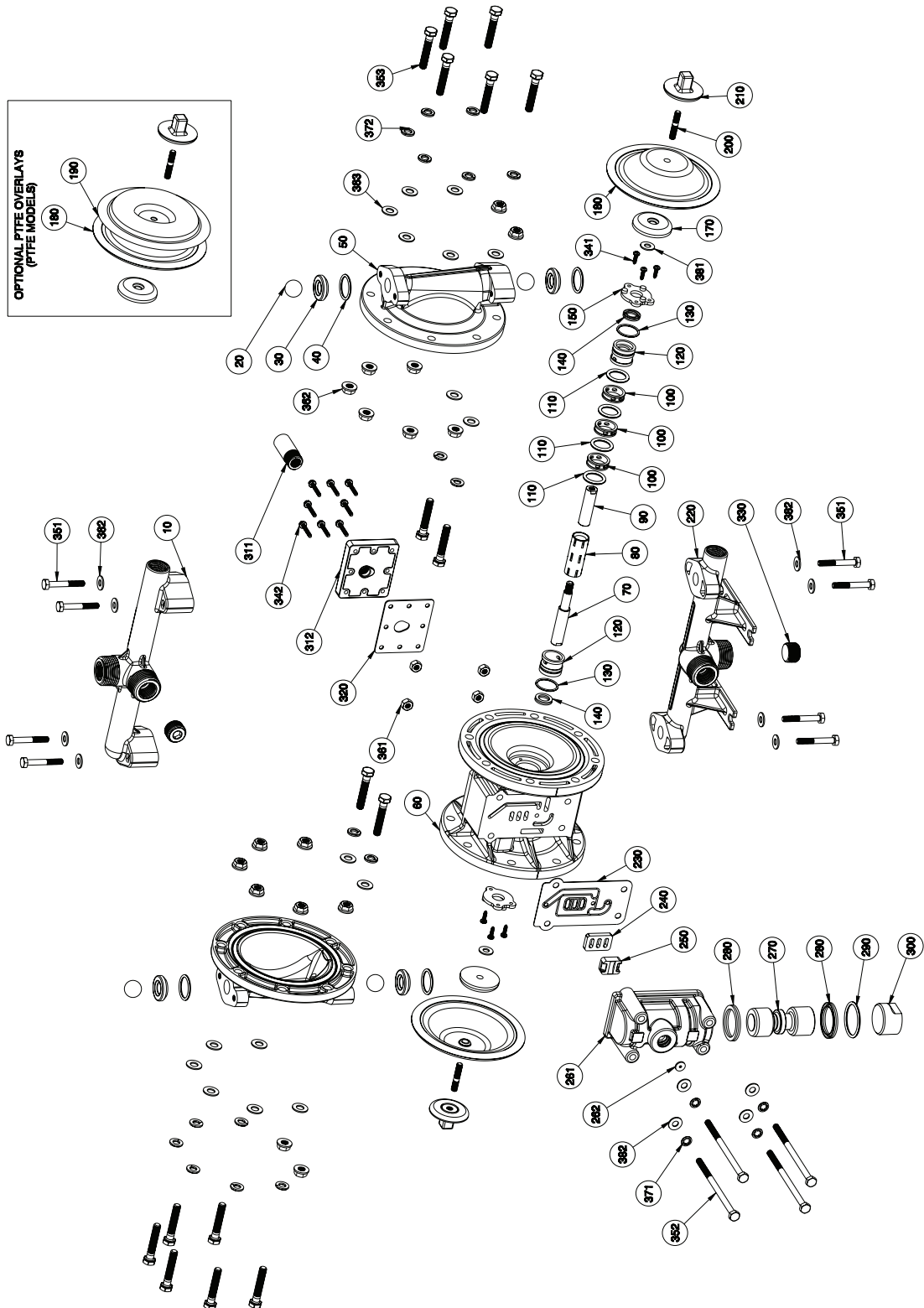
\* Any Character

‡, Δ Only sold as part of assembly

ASSEMBLY PART NUMBERS	PUMP MODEL	PART NO.	MATERIAL
‡ AIR VALVE ASSEMBLY 230, 240, 250, 260, 270, 280, 290, 300	A075-*A*-****-***	AMK-075-A	Various
Δ PILOT SIEVE ASSEMBLY 80, 100, 110, 120, 130, 140	A075-*A*-****-***	APK-075-A	Various

# EXPLODED VIEW & PARTS LIST

## ALUMINUM AND STAINLESS STEEL PUMPS WITH PLASTIC CENTER SECTION (A075-\*P\*-\*\*\*\*-\*\*\*)



# PARTS LIST - ALUMINUM AND STAINLESS STEEL PUMPS WITH PLASTIC CENTER SECTION (A075-\*P\*-\*-\*-\*\*\*)

ITEM	DESCRIPTION	QTY	PUMP MODEL	PART NO.	MATERIAL
10	DISCHARGE MANIFOLD	1	A075-N*A-*-*-0**	11329-A075-20-N	Aluminum
			A075-B*A-*-*-0**	11329-A075-20-B	Aluminum
			A075-N*3-*-*-0**	11329-A075-26-N	Stainless Steel
			A075-B*3-*-*-0**	11329-A075-26-T	Stainless Steel
20	BALL	4	A075-*-*-*V**-*	11000-13	FKM
			A075-*-*-*G**-*	11000-19	Geolast®
			A075-*-*-*S**-*	11000-23	Santoprene®
			A075-*-*-*3**-*	11000-26	Stainless Steel
			A075-*-*-*T**-*	11000-45	PTFE
30	VALVE SEAT	4	A075-*-*-*A**-*	10900-20	Aluminum
			A075-*-*-*3**-*	10900-26	Stainless Steel
			A075-*-*-*P**-*	10900-40	Polypropylene
			A075-*-*-*Y**-*	10900-42	Nylon
			A075-*-*-*K**-*	10900-56	PVDF
40	O-RING (VALVE SEAT)	4	A075-*-*-*N**-*	11904-11	Nitrile
			A075-*-*-*V**-*	11904-13	FKM
			A075-*-*-*E**-*	11904-15	EPDM
			A075-*-*-*T**-*	11904-17	PTFE
50	OUTER CHAMBER	2	A075-*A-*-*-**	10720-20	Aluminum
			A075-*3-*-*-**	10720-26	Stainless Steel
60	INTERMEDIATE	1	A075-*P*-*-*-**	11521-60	Polypropylene
70 & 90	DIAPHRAGM ROD ASSEMBLY	1	ALL MODELS	33000-00	Stainless Steel
80	PILOT SLEEVE	1	ALL MODELS	10105-31 Δ	Acetel
100	INNER SPACER (PILOT SLEEVE)	3	ALL MODELS	10203-40 Δ	Polypropylene
110	O-RING (PILOT SLEEVE)	4	ALL MODELS	11920-16 Δ	Urethane
120	END SPACER (PILOT SLEEVE)	2	ALL MODELS	10204-40 Δ	Polypropylene
130	O-RING (END SPACER)	2	ALL MODELS	11923-11 Δ	Nitrile
140	LIP SEAL (DIAPHRAGM ROD)	2	ALL MODELS	12000-76 Δ	Nitrile
150	RETAINING PLATE	2	ALL MODELS	12708-54	Nylon
160	N/A				
170	INNER DIAPHRAGM PLATE	2	ALL MODELS	11100-40	Polypropylene
180	DIAPHRAGM	2	A075-*-*-*V**-*	10600-13	FKM
			A075-*-*-*G**-*	10600-19	Geolast®
			A075-*-*-*N**-*	10600-21	Nitrile
			A075-*-*-*S**-*	10600-23	Santoprene®
			A075-*-*-*T**-*	10600-23	Santoprene®
190	OVERLAY (OPTIONAL)	2	A075-*-*-*T**-*	11400-59	PTFE
200 & 210	OUTER DIAPHRAGM PLATE	2	A075-*A-*-*-**	11208-20	Aluminum
			A075-*3-*-*-**	11208-26	Stainless Steel
220	SUCTION MANIFOLD	1	A075-N*A-*-*-0**	11328-A075-20-N	Aluminum
			A075-B*A-*-*-0**	11328-A075-20-B	Aluminum
			A075-N*3-*-*-0**	11328-A075-26-N	Stainless Steel
			A075-B*3-*-*-0**	11328-A075-26-T	Stainless Steel
230	AIR VALVE GASKET	1	ALL MODELS	12116-19 ‡	Nitrile
240	SHUTTLE PLATE	1	ALL MODELS	10416-77 ‡	Ceramic
250	SHUTTLE	1	ALL MODELS	10415-00 ‡	Special
261 & 262	AIR VALVE BODY	1	A075-*P*-*-*-**	11614-60 ‡	Polypropylene
270	AIR VALVE SPOOL	1	ALL MODELS	10480-31 ‡	Acetel
280	LIP SEAL (AIR VALVE)	2	ALL MODELS	12003-76 ‡	Nitrile
290	O-RING (AIR VALVE END PLUG)	1	ALL MODELS	11913-11 ‡	Nitrile

# PARTS LIST - ALUMINUM AND STAINLESS STEEL PUMPS WITH PLASTIC CENTER SECTION (A075-\*P\*-\*-\*-\*\*\*)

ITEM	DESCRIPTION	QTY	PUMP MODEL	PART NO.	MATERIAL
300	AIR VALVE END PLUG	1	A075-*P*-*-*-***)	11703-60 ‡	Polypropylene
311	MUFFLER MUFFLER (METAL)	1	ALL MODELS Optional	13008-00 13002-00	Standard Metal
312	MUFFLER PLATE	1	A075-*P*-*-*-***)	13111-60	Polypropylene
320	MUFFLER PLATE GASKET	1	A075-*P*-*-*-***)	12117-19	Nitrile
341	SCREW, SELF-TAP (#6 X 1/2")	6	A075-*P*-*-*-***)	12510-26	Stainless Steel
342	SCREW, SLOTTED HEAD SELF-TAP (1")	8	A075-*P*-*-*-***)	12525-26	Stainless Steel
351	HEX HEAD CAP SCREW (1/4"-20 x 1-3/4")	8	A075-**A-****-0* A075-**3-****-0*	12500-25 12500-26	Plated Steel Stainless Steel
352	HEX HEAD CAP SCREW (1/4"-20 x 4-1/2")	4	A075-*PA-****-0* A075-*P3-****-0*	12513-25 12513-26	Plated Steel Stainless Steel
353	HEX HEAD CAP SCREW (5/16-18 x 1-3/4")	16	A075-**A-****-0* A075-**3-****-0*	12503-25 12503-26	Plated Steel Stainless Steel
361	HEX NUT (1/4"-20)	4	A075-*PA-****-0* A075-*P3-****-0*	12600-25 12600-26	Plated Steel Stainless Steel
362	HEX FLANGE NUT (5/16"-18)	16	A075-**A-****-0* A075-**3-****-0*	12608-25 12608-26	Plated Steel Stainless Steel
371	LOCK WASHER (1/4")	4	A075-**A-****-0* A075-**3-****-0*	12350-25 12350-26	Plated Steel Stainless Steel
372	WASHER, SPLIT LOCK (5/16")	16	A075-**A-****-0* A075-**3-****-0*	12313-25 12313-26	Plated Steel Stainless Steel
381	WASHER (1/4")	2	ALL MODELS	12300-26	Stainless Steel
382	WASHER (1/4")	12	A075-**A-****-0* A075-**3-****-0*	12300-25 12300-26	Plated Steel Stainless Steel
383	WASHER (5/16")	16	A075-**A-****-0* A075-**3-****-0*	12310-25 12310-26	Plated Steel Stainless Steel
390	N/A				
400	GROUNDING LUG (NOT SHOWN)	1	OPTIONAL	13481-20	Aluminum
	Magnalube® .75 oz. (As Required)		ALL MODELS	13404-00	Grease
* Any Character					
‡, Δ Only sold as part of assembly					

ASSEMBLY PART NUMBERS	PUMP MODEL	PART NO.	MATERIAL
‡ AIR VALVE ASSEMBLY 230, 240, 250, 261, 262, 270, 280, 290, 300	A075-*P*-*-*-***)	AMK-075-P	Various
Δ PILOT SIEVE ASSEMBLY 80, 100, 110, 120, 130, 140	A075-*P*-*-*-***)	APK-075-P	Various