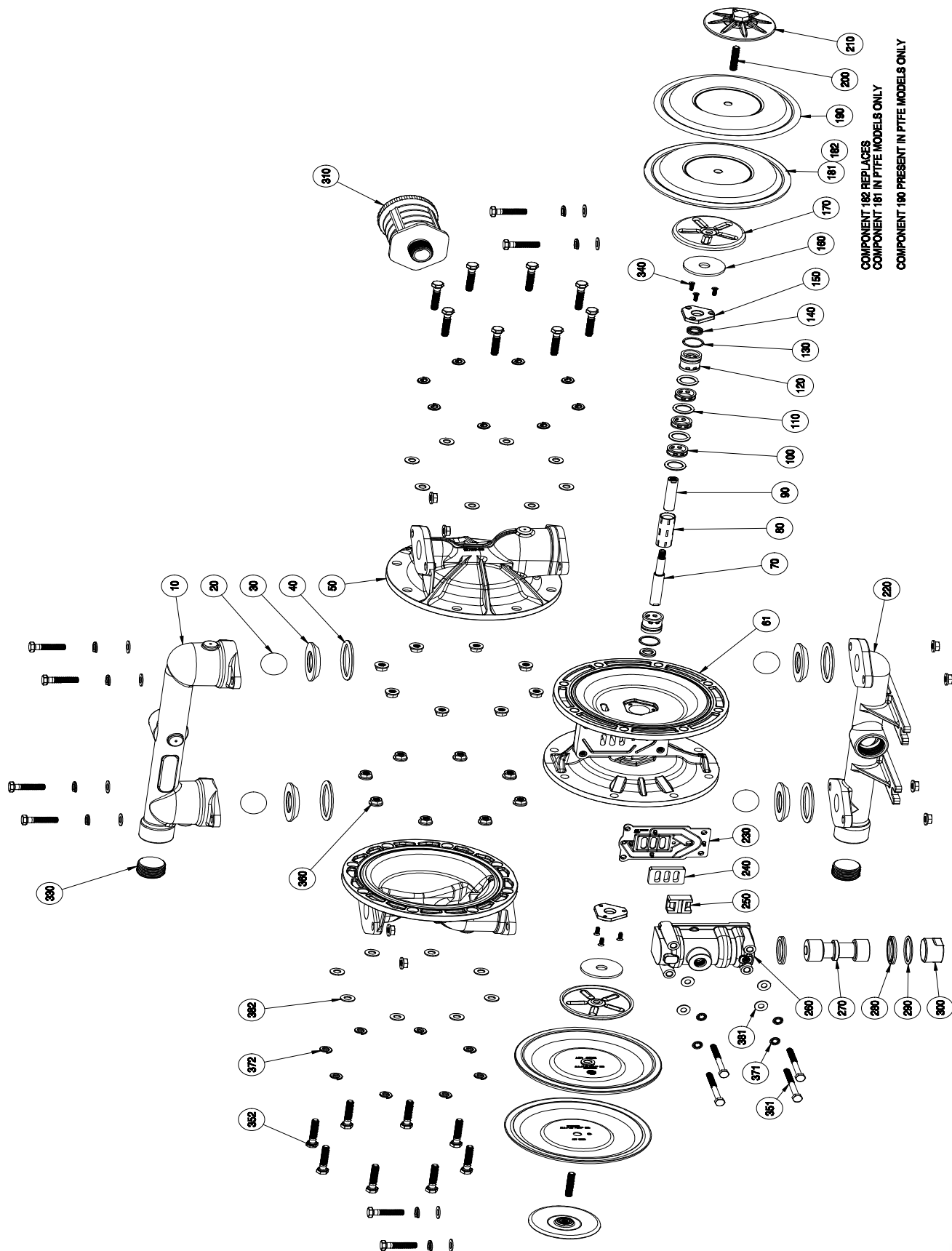


EXPLODED VIEW & PARTS LIST

A100-*A*-*-*-***-*** ALUMINUM & STAINLESS STEEL



COMPONENT 182 REPLACES COMPONENT 181 IN PITE MODELS ONLY
COMPONENT 190 PRESENT IN PITE MODELS ONLY

PARTS LIST - ALUMINUM & STAINLESS STEEL

A100-*A*-****-***

| ITEM | DESCRIPTION | QTY | PUMP MODEL | PART NO. | MATERIAL |
|---------|---------------------------------|-----|-------------------|---------------|-----------------|
| 10 | DISCHARGE MANIFOLD | 1 | A100-NAA-****-0** | 11310-20-NPT | Aluminum |
| | | | A100-BAA-****-0** | 11310-20-BSPT | Aluminum |
| | | | A100-NA3-****-0** | 11310-26-NPT | Stainless Steel |
| | | | A100-BA3-****-0** | 11310-26-BSPT | Stainless Steel |
| 20 | BALL | 4 | A100-*A*-V**_*** | 11008-13 | Viton®/FKM |
| | | | A100-*A*-E**_*** | 11008-15 | EPDM |
| | | | A100-*A*-G**_*** | 11008-19 | Geolast® |
| | | | A100-*A*-N**_*** | 11008-21 | Buna-N |
| | | | A100-*A*-S**_*** | 11008-23 | Santoprene® |
| | | | A100-*A*-3**_*** | 11008-26 | Stainless Steel |
| | | | A100-*A*-T**_*** | 11008-45 | PTFE |
| 30 | VALVE SEAT | 4 | A100-*A**_A**_*** | 10927-20 | Aluminum |
| | | | A100-*A**_3**_*** | 10927-26 | Stainless Steel |
| | | | A100-*A**_P**_*** | 10927-39 | Polypropylene |
| | | | A100-*A**_Y**_*** | 10927-42 | Nylon |
| 40 | O-RING (VALVE SEAT) | 4 | A100-*A*-***N_*** | 11947-11 | Nitrile |
| | | | A100-*A*-***V_*** | 11947-13 | Viton®/FKM |
| | | | A100-*A*-***E_*** | 11947-15 | EPDM |
| | | | A100-*A*-***T_*** | 11947-17 | PTFE |
| 50 | OUTER CHAMBER | 2 | A100-*AA-****_*** | 10726-20 | Aluminum |
| | | | A100-*A3-****_*** | 10726-26 | Stainless Steel |
| 61 | INTERMEDIATE | 1 | A100-*A*-****_*** | 11526-20 | Aluminum |
| 70 & 90 | DIAPHRAGM ROD ASSEMBLY | 1 | ALL MODELS | 35005-00 | Stainless Steel |
| 80 | PILOT SLEEVE | 1 | ALL MODELS | 10105-31 Δ | Acetel |
| 100 | INNER SPACER (PILOT SLEEVE) | 3 | ALL MODELS | 10203-40 Δ | Polypropylene |
| 110 | O-RING (PILOT SLEEVE) | 4 | ALL MODELS | 11920-16 Δ | Urethane |
| 120 | END SPACER (PILOT SLEEVE) | 2 | ALL MODELS | 10209-40 Δ | Polypropylene |
| 130 | O-RING (END SPACER) | 2 | ALL MODELS | 11923-16 Δ | Urethane |
| 140 | LIP SEAL (DIAPHRAGM ROD) | 2 | ALL MODELS | 12000-76 Δ | Nitrile |
| 150 | RETAINING PLATE | 2 | ALL MODELS | 12718-54 | Nylon |
| 160 | BUMPER | 2 | ALL MODELS | 12325-16 | Urethane |
| 170 | INNER DIAPHRAGM PLATE | 2 | ALL MODELS | 11104-25 | Plated Steel |
| 181 | DIAPHRAGM | 2 | A100-*A*-N**_*** | 10612-11 | Buna-N |
| | | | A100-*A*-V**_*** | 10612-13 | Viton®/FKM |
| | | | A100-*A*-E**_*** | 10612-15 | EPDM |
| | | | A100-*A*-G**_*** | 10612-19 | Geolast® |
| | | | A100-*A*-S**_*** | 10612-23 | Santoprene® |
| 182 | DIAPHRAGM, BACKUP (PTFE ONLY) | 2 | A100-*A*-T**_*** | 10613-23 | Santoprene® |
| 190 | PTFE OVERLAY (PTFE ONLY) | 2 | A100-*A*-T**_*** | 11409-59 | PTFE |
| 200&210 | OUTER DIAPHRAGM PLATE WITH STUD | 2 | A100-*AA-****_*** | 11220-20 | Aluminum |
| | | | A100-*A3-****_*** | 11220-26 | Stainless Steel |
| 220 | SUCTION MANIFOLD | 1 | A100-NAA-****-0** | 11311-20-NPT | Aluminum |
| | | | A100-BAA-****-0** | 11311-20-BSPT | Aluminum |
| | | | A100-NA3-****-0** | 11311-26-NPT | Stainless Steel |
| | | | A100-BA3-****-0** | 11311-26-BSPT | Stainless Steel |
| 230 | AIR VALVE GASKET | 1 | ALL MODELS | 12125-19 ‡ | Nitrile |
| 240 | SHUTTLE PLATE | 1 | ALL MODELS | 10451-77 ‡ | Ceramic |

PARTS LIST - ALUMINUM & STAINLESS STEEL

A100-*A*-****-***

| ITEM | DESCRIPTION | QTY | PUMP MODEL | PART NO. | MATERIAL |
|------|---|-----|--|--|--|
| 250 | SHUTTLE | 1 | ALL MODELS | 10431-32 ‡ | Special |
| 260 | AIR VALVE BODY | 1 | ALL MODELS | 11619-20 ‡ | Aluminum |
| 270 | AIR VALVE SPOOL | 1 | ALL MODELS | 10482-31 ‡ | Acetel |
| 280 | LIP SEAL (AIR VALVE) | 2 | ALL MODELS | 12003-76 ‡ | Nitrile |
| 290 | O-RING (AIR VALVE END PLUG) | 1 | ALL MODELS | 11913-11 ‡ | Nitrile |
| 300 | AIR VALVE END PLUG | 1 | ALL MODELS | 11706-20 ‡ | Aluminum |
| 310 | MUFFLER MUFFLER (METAL) | 1 | ALL MODELS OPTIONAL | 13001-00 13009-00 | Standard Metal |
| 320 | N/A | | | | |
| 330 | PIPE PLUG | 2 | A100-NAA-****-0** A100-BAA-****-0** A100-NA3-****-0** A100-BA3-****-0** | 12265-20-NPT 12265-20-BSPT 12265-26-NPT 12265-26-BSPT | Aluminum Aluminum Stainless Steel Stainless Steel |
| 340 | SCREW, FLAT HEAD (#6-32 X 7/16") | 6 | ALL MODELS | 12578-26 | Stainless Steel |
| 351 | SCREW, HEX HEAD CAP (1/4"-20 X 3") | 4 | A100-*AA-****-*** A100-*A3-****-*** | 12516-25 12516-26 | Plated Steel Stainless Steel |
| 352 | SCREW, HEX HEAD CAP (5/16"-18 X 1-1/2") | 24 | A100-*AA-****-*** A100-*A3-****-*** | 12584-25 12584-26 | Plated Steel Stainless Steel |
| 360 | NUT, HEX FLANGE (5/16"-18) | 24 | A100-*AA-****-*** A100-*A3-****-*** | 12608-25 12608-26 | Plated Steel Stainless Steel |
| 371 | WASHER, LOCK (1/4") | 4 | A100-*AA-****-*** A100-*A3-****-*** | 12350-25 12350-26 | Plated Steel Stainless Steel |
| 372 | WASHER, SPLIT LOCK (5/16") | 24 | A100-*AA-****-*** A100-*A3-****-*** | 12313-25 12313-26 | Plated Steel Stainless Steel |
| 381 | WASHER (1/4") | 4 | A100-*AA-****-*** A100-*A3-****-*** | 12300-25 12300-26 | Plated Steel Stainless Steel |
| 382 | WASHER (5/16") | 24 | A100-*AA-****-*** A100-*A3-****-*** | 12310-25 12310-26 | Plated Steel Stainless Steel |
| 390 | N/A | | | | |
| 400 | GROUNDING LUG (NOT SHOWN) | 1 | OPTIONAL | 13481-20 | Aluminum |
| | Magnalube® .75 oz. | | As Required, All Models | 13404-00 | Grease |

* Any Character

‡, Δ Only sold as part of assembly

| ASSEMBLY PART NUMBERS | PUMP MODEL | PART NO. | MATERIAL |
|--|------------|-----------|----------|
| ‡ AIR VALVE ASSEMBLY 230, 240, 250, 260, 270, 280, 290, 300 | ALL MODELS | AMK-100-A | Various |
| Δ PILOT SIEVE ASSEMBLY 80, 100, 110, 120, 130, 140 | ALL MODELS | APK-100-A | Various |