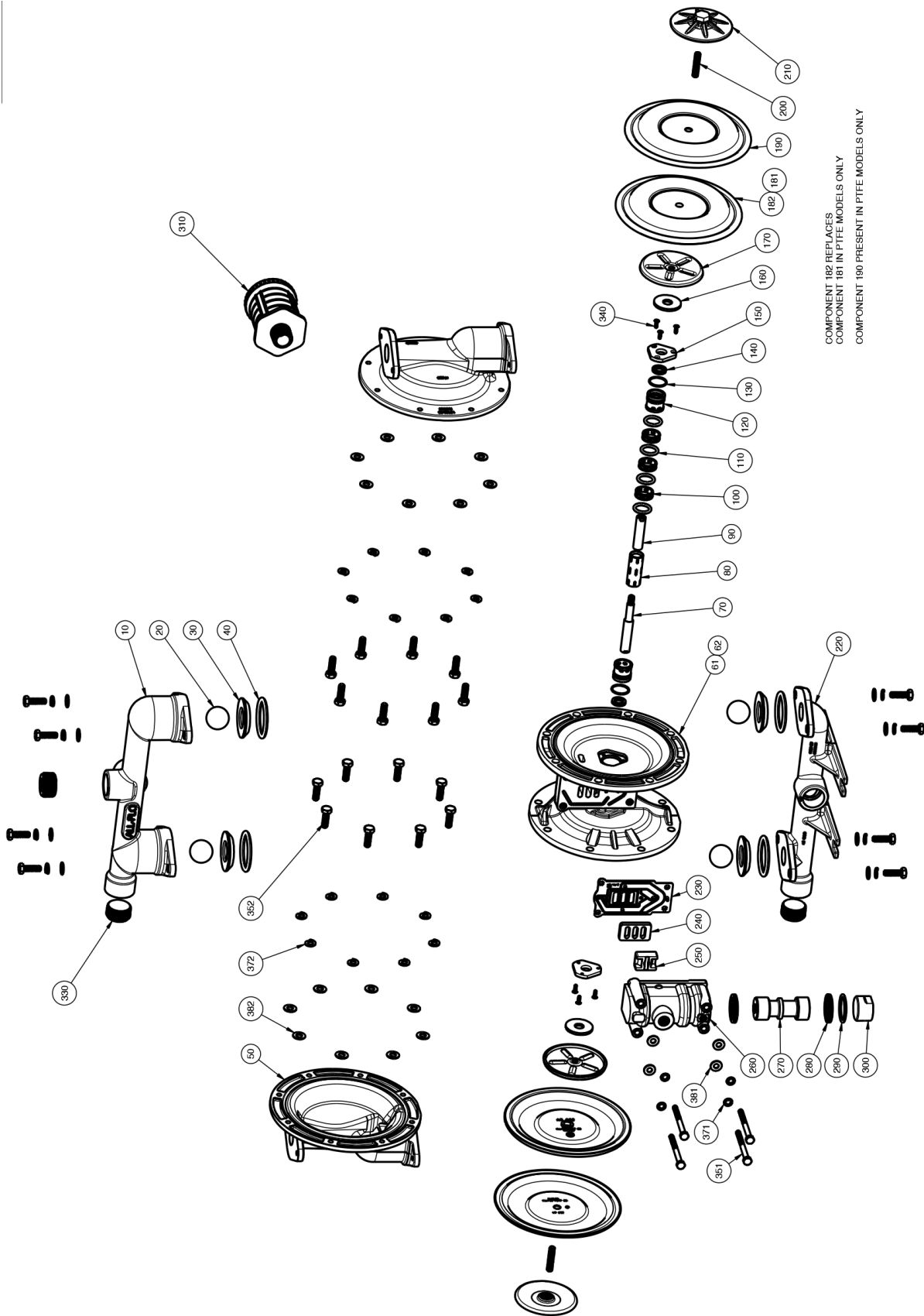


EXPLODED VIEW & PARTS LIST

A101-*A*-*****-*** STAINLESS STEEL



COMPONENT 182 REPLACES
COMPONENT 181 IN PTFE MODELS ONLY
COMPONENT 190 PRESENT IN PTFE MODELS ONLY

PARTS LIST - STAINLESS STEEL

A101-*A*-****-***

ITEM	DESCRIPTION	QTY	PUMP MODEL	PART NO.	MATERIAL
10	DISCHARGE MANIFOLD	1	A101-NA3-****-***	11330-26-NPT	Stainless Steel
			A101-BA3-****-***	11330-26-BSPT	Stainless Steel
20	BALL	4	A101-*A*-*V**_***	11008-13 †	FKM
			A101-*A*-*E**_***	11008-15 †	EPDM
			A101-*A*-*G**_***	11008-19 †	Bunast™
			A101-*A*-*N**_***	11008-21 †	Buna-N
			A101-*A*-*S**_***	11008-23 †	Santoprene®
			A101-*A*-*3**_***	11008-26 †	Stainless Steel
			A101-*A*-*T**_***	11008-45 †	PTFE
30	VALVE SEAT	4	A101-*A*-**A*_***	10927-20 †	Aluminum
			A101-*A*-**3*_***	10927-26 †	Stainless Steel
			A101-*A*-**P*_***	10927-39 †	Polypropylene
			A101-*A*-**Y*_***	10927-42 †	Nylon
40	O-RING (VALVE SEAT)	4	A101-*A*-***N_***	11947-11 †	Nitrile
			A101-*A*-***V_***	11947-13 †	FKM
			A101-*A*-***E_***	11947-15 †	EPDM
			A101-*A*-***T_***	11947-17 †	PTFE
50	OUTER CHAMBER	2	A101-*A3-****-***	10730-26	Stainless Steel
61	INTERMEDIATE	1	A101-*A*-****-***	11526-20	Aluminum
70 & 90	DIAPHRAGM ROD ASSEMBLY	1	ALL MODELS	35005-00	Stainless Steel
80	PILOT SLEEVE	1	ALL MODELS	10105-31 Δ	Acetel
100	INNER SPACER (PILOT SLEEVE)	3	ALL MODELS	10203-40 Δ	Polypropylene
110	O-RING (PILOT SLEEVE)	4	ALL MODELS	11920-16 Δ	Urethane
120	END SPACER (PILOT SLEEVE)	2	ALL MODELS	10209-40 Δ	Polypropylene
130	O-RING (END SPACER)	2	ALL MODELS	11923-16 Δ	Urethane
140	LIP SEAL (DIAPHRAGM ROD)	2	ALL MODELS	12000-76 Δ	Nitrile
150	RETAINING PLATE	2	ALL MODELS	12718-54	Nylon
160	BUMPER	2	ALL MODELS	12325-16	Urethane
170	INNER DIAPHRAGM PLATE	2	ALL MODELS	11104-25	Plated Steel
181	DIAPHRAGM	2	A101-*A*-N***_***	10612-11 †	Buna-N
			A101-*A*-V***_***	10612-13 †	FKM
			A101-*A*-E***_***	10612-15 †	EPDM
			A101-*A*-G***_***	10612-19 †	Bunast™
			A101-*A*-S***_***	10612-23 †	Santoprene®
182	DIAPHRAGM, BACKUP (PTFE ONLY)	2	A101-*A*-T***_***	10613-23 †	Santoprene®
190	PTFE OVERLAY (PTFE ONLY)	2	A101-*A*-T***_***	11409-59 †	PTFE
200&210	OUTER DIAPHRAGM PLATE WITH STUD	2	A101-*A3-****-***	11220-26	Stainless Steel
220	SUCTION MANIFOLD	1	A101-NA3-****-***	11331-26-NPT	Stainless Steel
			A101-BA3-****-***	11331-26-BSPT	Stainless Steel
230	AIR VALVE GASKET	1	ALL MODELS	12125-19 ‡	Nitrile
240	SHUTTLE PLATE	1	ALL MODELS	10451-77 ‡	Ceramic
250	SHUTTLE	1	ALL MODELS	10431-32 ‡	Special
260	AIR VALVE BODY	1	ALL MODELS	11619-20 ‡	Aluminum
270	AIR VALVE SPOOL	1	ALL MODELS	10482-31 ‡	Acetel
280	LIP SEAL (AIR VALVE)	2	ALL MODELS	12003-76 ‡	Nitrile
290	O-RING (AIR VALVE END PLUG)	1	ALL MODELS	11913-11 ‡	Nitrile

PARTS LIST - ALUMINUM & STAINLESS STEEL

A101-*A*-****-***

ITEM	DESCRIPTION	QTY	PUMP MODEL	PART NO.	MATERIAL
300	AIR VALVE END PLUG	1	ALL MODELS	11706-20 ‡	Aluminum
310	MUFFLER MUFFLER (METAL)	1	ALL MODELS OPTIONAL	13001-00 13009-00	Standard Metal
320	N/A				
330	PIPE PLUG	3	A101-NA3-****-*** A101-BA3-****-***	12265-26-NPT 12265-26-BSPT	Stainless Steel Stainless Steel
340	SCREW, FLAT HEAD (#6-32 X 7/16")	6	ALL MODELS	12578-26	Stainless Steel
351	SCREW, HEX HEAD CAP (1/4"-20 X 3")	4	A101-*A3-****-***	12516-26	Stainless Steel
352	SCREW, HEX HEAD CAP (5/16"-18 X 1")	24	A101-*A3-****-***	12594-26	Stainless Steel
371	WASHER, LOCK (1/4")	4	A100-*A3-****-***	12350-26	Stainless Steel
372	WASHER, SPLIT LOCK (5/16")	24	A100-*A3-****-***	12313-26	Stainless Steel
381	WASHER (1/4")	4	A100-*A3-****-***	12300-26	Stainless Steel
382	WASHER (5/16")	24	A100-*A3-****-***	12310-26	Stainless Steel
390	N/A				
400	GROUNDING LUG (NOT SHOWN)	1	OPTIONAL	13481-20	Aluminum
	Magnalube® .75 oz.		As Required, All Models	13404-00	Grease

* Any Character

‡, Δ Only sold as part of assembly

ASSEMBLY PART NUMBERS	PUMP MODEL	PART NO.	MATERIAL
‡ AIR VALVE ASSEMBLY 230, 240, 250, 260, 270, 280, 290, 300	ALL MODELS	AMK-100-A	Various
Δ PILOT SEEVE ASSEMBLY 80, 100, 110, 120, 130, 140	ALL MODELS	APK-100-A	Various
PILOT SEEVE ELASTOMER KIT INCLUDES 100 THROUGH 140	ALL MODELS	PEK-35005	Various
† WET END REPAIR KIT 20, 30, 40, 181, 182, 190	A100-*A*-****-***	AWE-100-****-M	Various