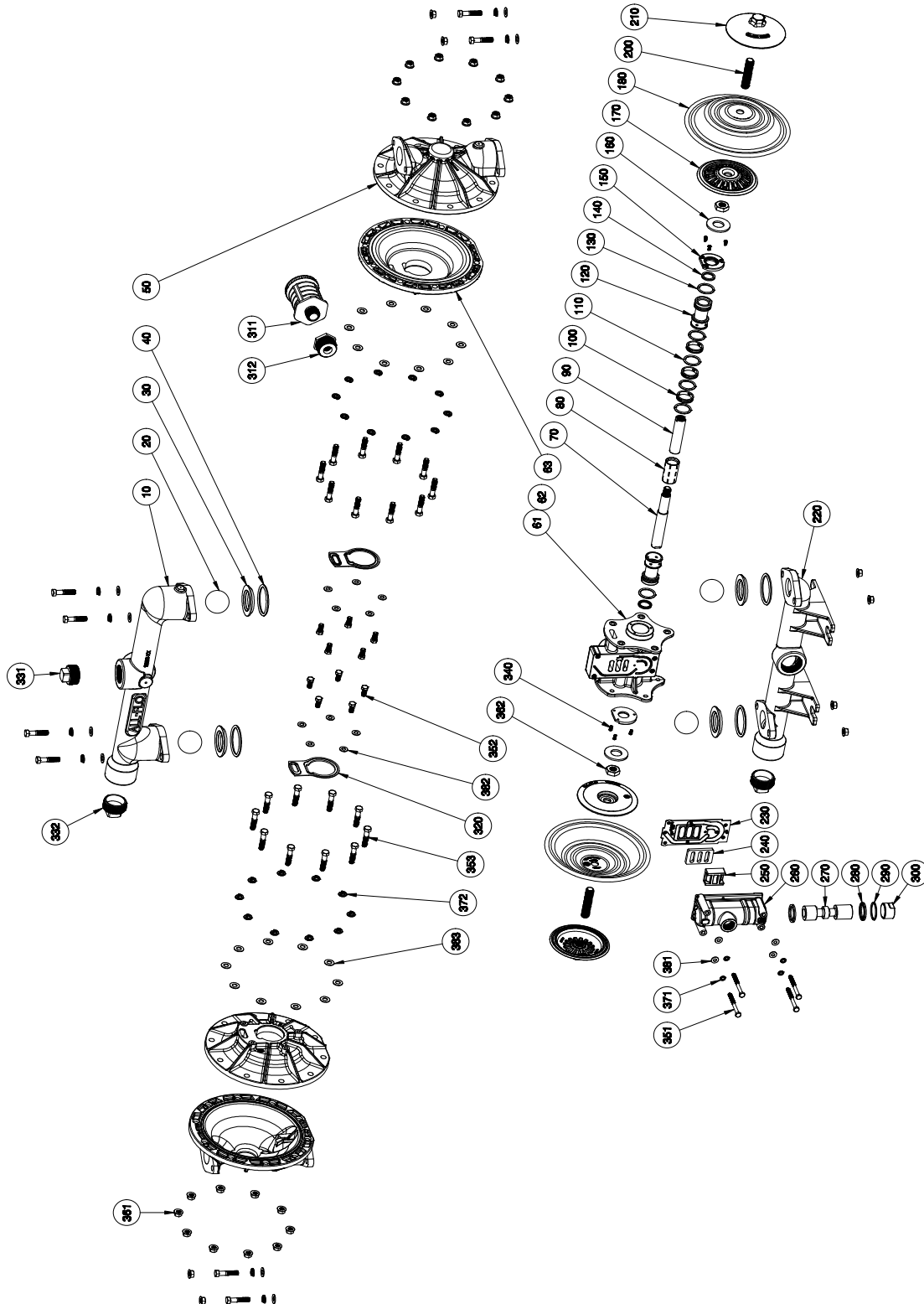


EXPLODED VIEW & PARTS LIST

THREADED ALUMINUM & STAINLESS STEEL

FULL STROKE, A150-***-****-***



PARTS LIST - THREADED ALUMINUM & STAINLESS STEEL

FULL STROKE, A150-***-****-***

ITEM	DESCRIPTION	QTY	PUMP MODEL	PART NO.	MATERIAL
10	DISCHARGE MANIFOLD - THREADED	1	A150-N*A-****-***	11332-20-NPT	Aluminum
			A150-N*3-****-***	11332-26-NPT	Stainless Steel
			A150-B*A-****-***	11332-20-BSPT	Aluminum
			A150-B*3-****-***	11332-26-BSPT	Stainless Steel
20	BALL	4	A150-***-V**-*	11010-13-4PK	Viton®/FKM
			A150-***-E**-*	11010-15-4PK	EPDM
			A150-***-G**-*	11010-19-4PK	Geolast®
			A150-***-N**-*	11010-21-4PK	Buna-N
			A150-***-S**-*	11010-23-4PK	Santoprene®
			A150-***-T**-*	11010-59-4PK	PTFE
30	VALVE SEAT	4	A150-***-A*-***	10930-20-4PK	Aluminum
			A150-***-3*-***	10930-26-4PK	Stainless Steel
			A150-***-P*-***	10930-39-4PK	Polypropylene
			A150-***-Y*-***	10930-42-4PK	Nylon
40	O-RING, VALVE SEAT	4	A150-***-N-***	11952-11-4PK	Nitrile
			A150-***-V-***	11952-13-4PK	Viton®/FKM
			A150-***-E-***	11952-15-4PK	EPDM
			A150-***-T-***	11952-17-4PK	PTFE
50	OUTER CHAMBER	2	A150-AA-****-***	10727-20	Aluminum
			A150-33-****-***	10727-26	Stainless Steel
61&62	INTERMEDIATE	1	A150-A*-****-***	11525-20	Aluminum
			A150-33-****-***	11525-26	Stainless Steel
63	INNER CHAMBER	2	A150-A*-****-***	11806-20	Aluminum
			A150-33-****-***	11806-26	Stainless Steel
70&90	DIAPHRAGM ROD ASSEMBLY (FULL STROKE)	1	All non-PTFE Models	35003-00	Stainless Steel
80	VALVE SLEEVE	1	All Models	10107-31 Δ	Acetal
100	INNER SPACER (PILOT SLEEVE)	3	All Models	10205-40 Δ	Polypropylene
110	O-RING (PILOT SLEEVE)	4	All Models	11919-16 Δ	Urethane
120	END SPACER (PILOT SLEEVE)	2	All Models	10208-40 Δ	Polypropylene
130	O-RING (END SPACER)	2	All Models	11919-11 Δ	Nitrile
140	LIP SEAL (DIAPHRAGM ROD)	2	All Models	12002-76 Δ	Nitrile
150	RETAINING PLATE	2	All Models	12717-54	Nylon
160	BUMPER	2	All Models	12317-16	Urethane
170	INNER DIAPHRAGM PLATE (FULL STROKE) (NON-PTFE MODELS)	2	A150-A*-****-***	11112-20	Aluminum
			A150-33-****-***	11112-26	Stainless Steel
180	DIAPHRAGM	2	A150-***-N***-***	10614-11-2PK	Buna-N
			A150-***-V***-***	10614-13-2PK	Viton®/FKM
			A150-***-E***-***	10614-15-2PK	EPDM
			A150-***-C***-***	10614-19-2PK	Geolast®
			A150-***-S***-***	10614-23-2PK	Santoprene®
190	N/A				
200&210	OUTER DIAPHRAGM PLATE WITH STUD	2	A150-AA-****-***	11221-20	Aluminum
			A150-33-****-***	11221-26	Stainless Steel
220	SUCTION MANIFOLD - THREADED	1	A150-N*A-****-***	11333-20-NPT	Aluminum
			A150-N*3-****-***	11333-26-NPT	Stainless Steel
			A150-B*A-****-***	11333-20-BSPT	Aluminum
			A150-B*3-****-***	11333-26-BSPT	Stainless Steel
230	AIR VALVE GASKET	1	All Models	12124-19 ‡	Nitrile
240	SHUTTLE PLATE	1	All Models	10450-77 ‡	Ceramic
250	SHUTTLE	1	All Models	10430-00 ‡	Special

PARTS LIST - THREADED ALUMINUM & STAINLESS STEEL

FULL STROKE, A150-***-****-***

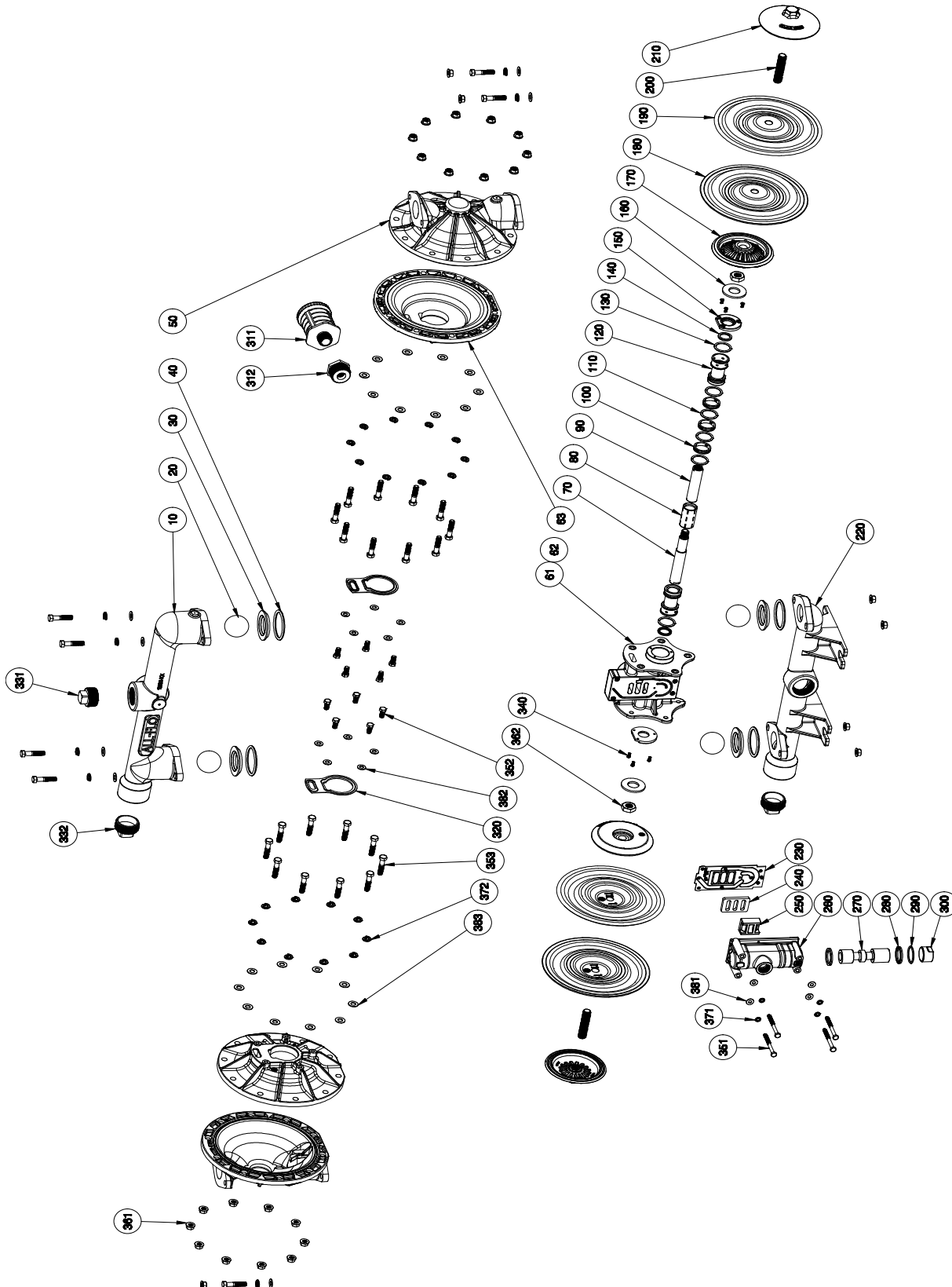
ITEM	DESCRIPTION	QTY	PUMP MODEL	PART NO.	MATERIAL
260	AIR VALVE BODY	1	A150-*A*-****-***	11618-20 ‡	Aluminum
			A150-*33-****-***	11618-26 ‡	Stainless Steel
270	AIR VALVE SPOOL	1	All Models	10483-31 ‡	Acetal
280	LIP SEAL (AIR VALVE)	2	All Models	12003-76 ‡	Nitrile
290	O-RING (AIR VALVE END PLUG)	1	All Models	11913-11 ‡	Nitrile
300	AIR VALVE END PLUG	1	A150-*A*-****-***	11706-20 ‡	Aluminum
			A150-*33-****-***	11706-26 ‡	Stainless Steel
311&312	MUFFLER w/ BUSHING	1	A150-***-****-*0* Optional	13013-00 13010-00	Polypropylene Metal
320	INNER CHAMBER GASKET	2	All Models	12123-19	Nitrile
331	PIPE PLUG 1-1/4"	1	A150-B*A-****-***	12275-20-BSPT	Aluminum
			A150-N*A-****-***	12275-20-NPT	Aluminum
			A150-B*3-****-***	12275-26-BSPT	Stainless Steel
			A150-N*3-****-***	12275-26-NPT	Stainless Steel
332	PIPE PLUG 1-1/2"	1	A150-B*A-****-***	12270-20-BSPT	Aluminum
			A150-N*A-****-***	12270-20-NPT	Aluminum
			A150-B*3-****-***	12270-26-BSPT	Stainless Steel
			A150-N*3-****-***	12270-26-NPT	Stainless Steel
340	SCREW, SELF-LOCKING PHILLIPS [#6-32 X 3/8"]	6	All Models	12571-26	Stainless Steel
351	SCREW ,HEX HEAD CAP (1/4"-20 X 3")	4	A150-**A-****-*0*	12516-25	Plated Steel
			A150-**3-****-*0*	12516-26	Stainless Steel
352	SCREW, HEX HEAD CAP (5/16"-18 X 3/4")	10	A150-**A-****-*0*	12536-25	Plated Steel
			A150-**3-****-*0*	12536-26	Stainless Steel
353	SCREW, HEX HEAD CAP (3/8"-16 X 1-3/4")	28	A150-**A-****-*0*	12581-25	Plated Steel
			A150-**3-****-*0*	12581-26	Stainless Steel
361	NUT, FLANGE (3/8"-16)	28	A150-**A-****-*0*	12612-25	Plated Steel
			A150-**3-****-*0*	12612-26	Stainless Steel
362	NUT (5/8"-11)	2	All Models	12579-25	Plated Steel
371	WASHER, LOCK (1/4")	4	A150-**A-****-*0*	12350-25	Plated Steel
			A150-**3-****-*0*	12350-26	Stainless Steel
372	WASHER, SPLIT LOCK (3/8")	28	A150-**A-****-*0*	12316-25	Plated Steel
			A150-**3-****-*0*	12316-26	Stainless Steel
381	WASHER, FLAT (1/4")	4	A150-**A-****-*0*	12300-25	Plated Steel
			A150-**3-****-*0*	12300-26	Stainless Steel
382	WASHER (5/16")	10	A150-**A-****-*0*	12310-25	Plated Steel
			A150-**3-****-*0*	12310-26	Stainless Steel
383	WASHER (3/8")	28	A150-**A-****-*0*	12303-25	Plated Steel
			A150-**3-****-*0*	12303-26	Stainless Steel
390	N/A				
400	GROUNDING LUG (NOT SHOWN)	1	Optional	13481-20	Aluminum
	Magnalube .75 OZ.		As Required, All Models	13404-00	Grease

* Any Character

‡, Δ Only sold as part of assembly

ASSEMBLY PART NUMBERS	PUMP MODEL	PART NO.	MATERIAL
‡ MAIN AIR VALVE ASSEMBLY 230, 240, 250, 260, 270, 280, 290, 300	A150-*A*-****-***	AMK-150-A	Various
	A150-*3*-****-***	AMK-150-3	Various
Δ PILOT VALVE ASSEMBLY 80, 100, 110, 120, 130, 140	A150-*A*-****-***	APK-150-A	Various
	A150-*3*-****-***	APK-150-3	Various

THREADED ALUMINUM & STAINLESS STEEL PTFE SHORT STROKE, A150-***-T***-***



PARTS LIST - THREADED ALUMINUM & STAINLESS STEEL

PTFE SHORT STROKE, A150-***-T***-***

ITEM	DESCRIPTION	QTY	PUMP MODEL	PART NO.	MATERIAL
10	DISCHARGE MANIFOLD - THREADED	1	A150-N*A-****-***	11332-20-NPT	Aluminum
			A150-N*3-****-***	11332-26-NPT	Stainless Steel
			A150-B*A-****-***	11332-20-BSPT	Aluminum
			A150-B*3-****-***	11332-26-BSPT	Stainless Steel
20	BALL	4	A150-***-V**_***	11010-13-4PK	Viton®/FKM
			A150-***-E**_***	11010-15-4PK	EPDM
			A150-***-G**_***	11010-19-4PK	Geolast®
			A150-***-N**_***	11010-21-4PK	Buna-N
			A150-***-S**_***	11010-23-4PK	Santoprene®
			A150-***-T**_***	11010-59-4PK	PTFE
30	VALVE SEAT	4	A150-***-**A*_***	10930-20-4PK	Aluminum
			A150-***-**3*_***	10930-26-4PK	Stainless Steel
			A150-***-**P*_***	10930-39-4PK	Polypropylene
			A150-***-**Y*_***	10930-42-4PK	Nylon
40	O-RING, VALVE SEAT	4	A150-***-***N-***	11952-11-4PK	Nitrile
			A150-***-***V-***	11952-13-4PK	Viton®/FKM
			A150-***-***E-***	11952-15-4PK	EPDM
			A150-***-***T-***	11952-17-4PK	PTFE
50	OUTER CHAMBER	2	A150-*AA-****-***	10727-20	Aluminum
			A150-*3-****-***	10727-26	Stainless Steel
61&62	INTERMEDIATE	1	A150-*A*-****-***	11525-20	Aluminum
			A150-*33-****-***	11525-26	Stainless Steel
63	INNER CHAMBER	2	A150-*A*-****-***	11806-20	Aluminum
			A150-*33-****-***	11806-26	Stainless Steel
70&90	DIAPHRAGM ROD ASSEMBLY (SHORT STROKE)	1	A150-***-T***-***	35004-00	Stainless Steel
80	VALVE SLEEVE	1	All Models	10107-31 Δ	Acetal
100	INNER SPACER (PILOT SLEEVE)	3	All Models	10205-40 Δ	Polypropylene
110	O-RING (PILOT SLEEVE)	4	All Models	11919-16 Δ	Urethane
120	END SPACER (PILOT SLEEVE)	2	All Models	10208-40 Δ	Polypropylene
130	O-RING (END SPACER)	2	All Models	11919-11 Δ	Nitrile
140	LIP SEAL (DIAPHRAGM ROD)	2	All Models	12002-76 Δ	Nitrile
150	RETAINING PLATE	2	All Models	12717-54	Nylon
160	BUMPER	2	All Models	12317-16	Urethane
170	INNER DIAPHRAGM PLATE (SHORT STROKE) (PTFE PUMP MODELS)	2	A150-*A*-T***-***	11114-20	Aluminum
			A150-*33-T***-***	11114-26	Stainless Steel
180	DIAPHRAGM	2	A150-***-N***_***	10614-11-2PK	Buna-N
			A150-***-V***_***	10614-13-2PK	Viton®/FKM
			A150-***-E***_***	10614-15-2PK	EPDM
			A150-***-G***_***	10614-19-2PK	Geolast®
			A150-***-S***_***	10614-23-2PK	Santoprene®
190	OVERLAY (DIAPHRAGM)	2	A150-***-T***_***	11410-59-2PK	PTFE
200&210	OUTER DIAPHRAGM PLATE WITH STUD	2	A150-***A-****-***	11221-20	Aluminum
			A150-***3-****-***	11221-26	Stainless Steel
220	SUCTION MANIFOLD - THREADED	1	A150-N*A-****-***	11333-20-NPT	Aluminum
			A150-N*3-****-***	11333-26-NPT	Stainless Steel
			A150-B*A-****-***	11333-20-BSPT	Aluminum
			A150-B*3-****-***	11333-26-BSPT	Stainless Steel
230	AIR VALVE GASKET	1	All Models	12124-19 ‡	Nitrile
240	SHUTTLE PLATE	1	All Models	10450-77 ‡	Ceramic
250	SHUTTLE	1	All Models	10430-00 ‡	Special



PARTS LIST - THREADED ALUMINUM & STAINLESS STEEL

PTFE SHORT STROKE, A150-***-T***-***

ITEM	DESCRIPTION	QTY	PUMP MODEL	PART NO.	MATERIAL
260	AIR VALVE BODY	1	A150-*A*-****-***	11618-20 ‡	Aluminum
			A150-*33-****-***	11618-26 ‡	Stainless Steel
270	AIR VALVE SPOOL	1	All Models	10483-31 ‡	Acetal
280	LIP SEAL (AIR VALVE)	2	All Models	12003-76 ‡	Nitrile
290	O-RING (AIR VALVE END PLUG)	1	All Models	11913-11 ‡	Nitrile
300	AIR VALVE END PLUG	1	A150-*A*-****-***	11706-20 ‡	Aluminum
			A150-*33-****-***	11706-26 ‡	Stainless Steel
311&312	MUFFLER w/ BUSHING	1	A150-***-****-*0* Optional	13013-00 13010-00	Polypropylene Metal
320	INNER CHAMBER GASKET	2	All Models	12123-19	Nitrile
331	PIPE PLUG 1-1/4"	1	A150-B*A-****-***	12275-20-BSPT	Aluminum
			A150-N*A-****-***	12275-20-NPT	Aluminum
			A150-B*3-****-***	12275-26-BSPT	Stainless Steel
			A150-N*3-****-***	12275-26-NPT	Stainless Steel
332	PIPE PLUG 1-1/2"	1	A150-B*A-****-***	12270-20-BSPT	Aluminum
			A150-N*A-****-***	12270-20-NPT	Aluminum
			A150-B*3-****-***	12270-26-BSPT	Stainless Steel
			A150-N*3-****-***	12270-26-NPT	Stainless Steel
340	SCREW, SELF-LOCKING PHILLIPS [#6-32 X 3/8"]	6	All Models	12571-26	Stainless Steel
351	SCREW, HEX HEAD CAP (1/4"-20 X 3")	4	A150-**A-****-*0*	12516-25	Plated Steel
			A150-**3-****-*0*	12516-26	Stainless Steel
352	SCREW, HEX HEAD CAP (5/16"-18 X 3/4")	10	A150-**A-****-*0*	12536-25	Plated Steel
			A150-**3-****-*0*	12536-26	Stainless Steel
353	SCREW, HEX HEAD CAP (3/8"-16 X 1-3/4")	28	A150-**A-****-*0*	12581-25	Plated Steel
			A150-**3-****-*0*	12581-26	Stainless Steel
361	NUT, FLANGE (3/8"-16)	28	A150-**A-****-*0*	12612-25	Plated Steel
			A150-**3-****-*0*	12612-26	Stainless Steel
362	NUT (5/8"-11)	2	All Models	12579-25	Plated Steel
371	WASHER, LOCK (1/4")	4	A150-**A-****-*0*	12350-25	Plated Steel
			A150-**3-****-*0*	12350-26	Stainless Steel
372	WASHER, SPLIT LOCK (3/8")	28	A150-**A-****-*0*	12316-25	Plated Steel
			A150-**3-****-*0*	12316-26	Stainless Steel
381	WASHER, FLAT (1/4")	4	A150-**A-****-*0*	12300-25	Plated Steel
			A150-**3-****-*0*	12300-26	Stainless Steel
382	FLAT WASHER, (5/16")	10	A150-**A-****-*0*	12310-25	Plated Steel
			A150-**3-****-*0*	12310-26	Stainless Steel
383	WASHER (3/8")	28	A150-**A-****-*0*	12303-25	Plated Steel
			A150-**3-****-*0*	12303-26	Stainless Steel
390	N/A				
400	GROUNDING LUG (NOT SHOWN)	1	Optional	13481-20	Aluminum
	Magnalube .75 OZ.	As Required, All Models		13404-00	Grease

* Any Character

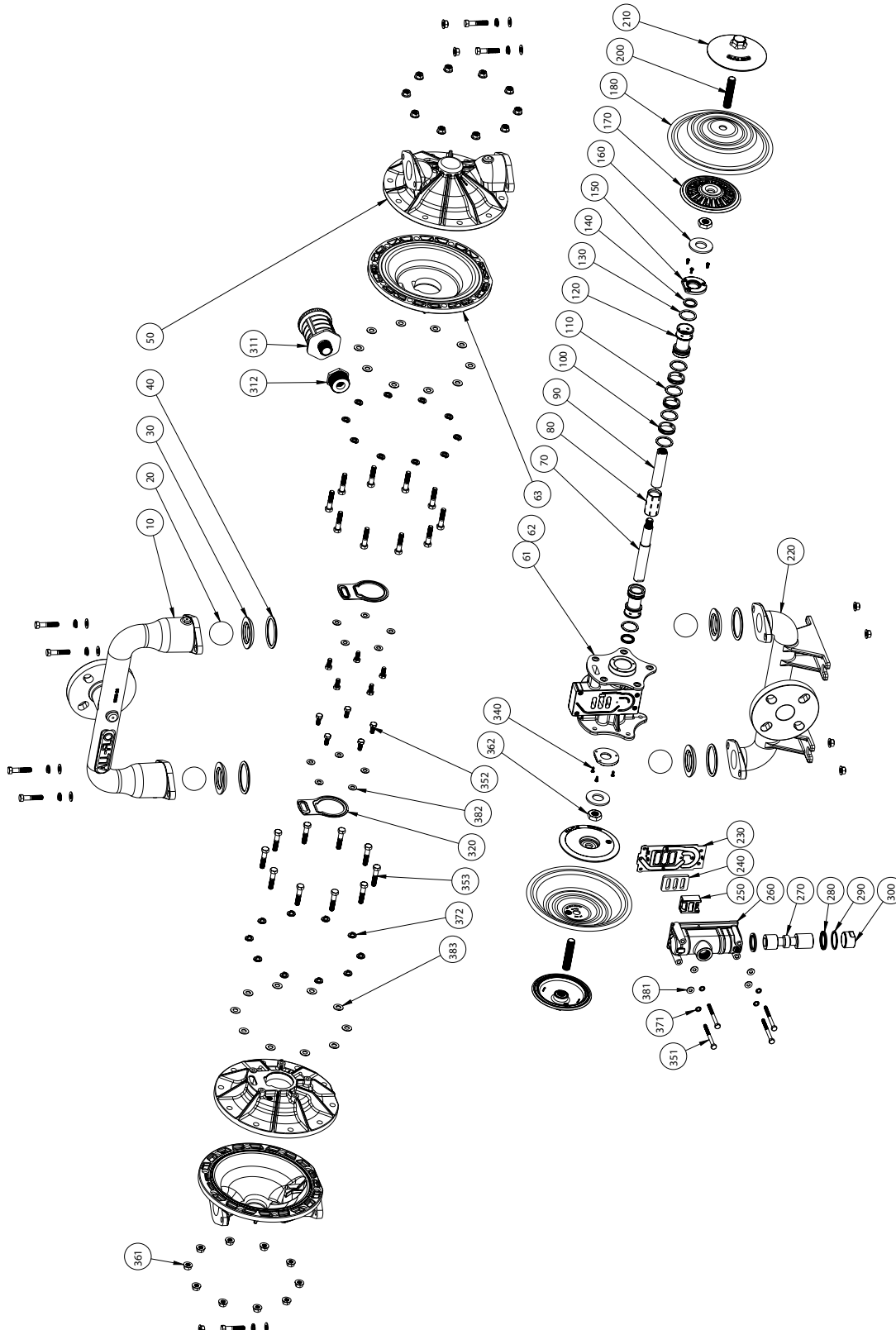
‡, Δ Only sold as part of assembly

ASSEMBLY PART NUMBERS	PUMP MODEL	PART NO.	MATERIAL
‡ MAIN AIR VALVE ASSEMBLY 230, 240, 250, 260, 270, 280, 290, 300	A150-*A*-****-***	AMK-150-A	Various
	A150-*3*-****-***	AMK-150-3	Various
Δ PILOT VALVE ASSEMBLY 80, 100, 110, 120, 130, 140	A150-*A*-****-***	APK-150-A	Various
	A150-*3*-****-***	APK-150-3	Various



FLANGED STAINLESS STEEL FULL STROKE

A150-F*3-****-***



PARTS LIST - FLANGED STAINLESS STEEL FULL STROKE

A150-F*3-****-***

ITEM	DESCRIPTION	QTY	PUMP MODEL	PART NO.	MATERIAL
10	DISCHARGE MANIFOLD - FLANGED	1	A150-F*3-****-***	11336-26	Stainless Steel
20	BALL	4	A150-***-V***-***	11010-13	Viton®/FKM
			A150-***-E***-***	11010-15	EPDM
			A150-***-G***-***	11010-19	Geolast®
			A150-***-N***-***	11010-21	Buna-N
			A150-***-S***-***	11010-23	Santoprene®
			A150-***-T***-***	11010-59	PTFE
30	VALVE SEAT	4	A150-***-A***-***	10930-20	Aluminum
			A150-***-3***-***	10930-26	Stainless Steel
			A150-***-P***-***	10930-39	Polypropylene
			A150-***-Y***-***	10930-42	Nylon
40	O-RING, VALVE SEAT	4	A150-***-N***-***	11952-11	Nitrile
			A150-***-V***-***	11952-13	Viton®/FKM
			A150-***-E***-***	11952-15	EPDM
			A150-***-T***-***	11952-17	PTFE
50	OUTER CHAMBER	2	A150-***3-****-***	10727-26	Stainless Steel
61&62	INTERMEDIATE	1	A150-*A*-****-***	11525-20	Aluminum
			A150-*33-****-***	11525-26	Stainless Steel
63	INNER CHAMBER	2	A150-*A*-****-***	11806-20	Aluminum
			A150-*33-****-***	11806-26	Stainless Steel
70&90	DIAPHRAGM ROD ASSEMBLY (FULL STROKE)	1	All non-PTFE Models	35003-00	Stainless Steel
80	VALVE SLEEVE	1	All Models	10107-31 Δ	Acetal
100	INNER SPACER (PILOT SLEEVE)	3	All Models	10205-40 Δ	Polypropylene
110	O-RING (PILOT SLEEVE)	4	All Models	11919-16 Δ	Urethane
120	END SPACER (PILOT SLEEVE)	2	All Models	10208-40 Δ	Polypropylene
130	O-RING (END SPACER)	2	All Models	11919-11 Δ	Nitrile
140	LIP SEAL (DIAPHRAGM ROD)	2	All Models	12002-76 Δ	Nitrile
150	RETAINING PLATE	2	All Models	12717-54	Nylon
160	BUMPER	2	All Models	12317-16	Urethane
170	INNER DIAPHRAGM PLATE (FULL STROKE) (NON-PTFE MODELS)	2	A150-*A*-****-***	11112-20	Aluminum
			A150-*33-****-***	11112-26	Stainless Steel
180	DIAPHRAGM	2	A150-***-N***-***	10614-11	Buna-N
			A150-***-V***-***	10614-13	Viton®/FKM
			A150-***-E***-***	10614-15	EPDM
			A150-***-G***-***	10614-19	Geolast®
			A150-***-S***-***	10614-23	Santoprene®
190	N/A				
200&210	OUTER DIAPHRAGM PLATE WITH STUD	2	A150-***3-****-***	11221-26	Stainless Steel
220	SUCTION MANIFOLD - FLANGED	1	A150-F*3-****-***	11337-26	Stainless Steel
230	GASKET, AIR VALVE	1	All Models	12124-19 ‡	Nitrile
240	SHUTTLE PLATE	1	All Models	10450-77 ‡	Ceramic
250	SHUTTLE	1	All Models	10430-00 ‡	Special
260	AIR VALVE BODY	1	A150-*A*-****-***	11618-20 ‡	Aluminum
			A150-*33-****-***	11618-26 ‡	Stainless Steel
270	AIR VALVE SPOOL	1	All Models	10483-31 ‡	Acetal

PARTS LIST - FLANGED STAINLESS STEEL FULL STROKE

A150-F*3-****-***

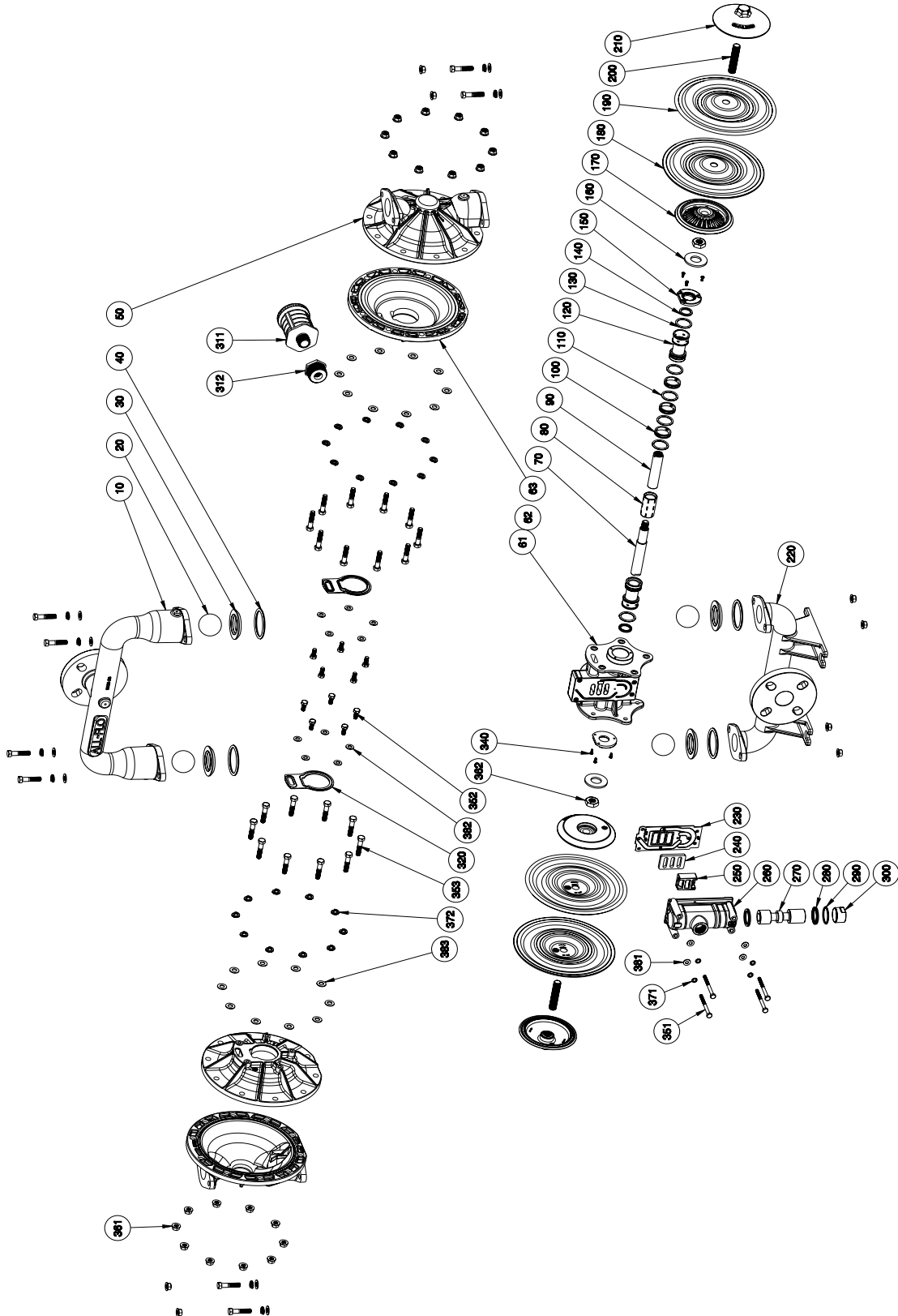
ITEM	DESCRIPTION	QTY	PUMP MODEL	PART NO.	MATERIAL
280	LIP SEAL (AIR VALVE)	2	All Models	12003-76 ‡	Nitrile
290	O-RING (AIR VALVE END PLUG)	1	All Models	11913-11 ‡	Nitrile
300	AIR VALVE END PLUG	1	A150-*A*****-*** A150-*33-****-***	11706-20 ‡ 11706-26 ‡	Aluminum Stainless Steel
311&312	MUFFLER w/ BUSHING	1	A150-***-****-*0* Optional	13013-00 13010-00	Polypropylene Metal
320	INNER CHAMBER GASKET	2	All Models	12123-19	Nitrile
330	N/A				
340	SCREW, SELF-LOCKING PHILLIPS (#6-32 X 3/8")	6	All Models	12571-26	Stainless Steel
351	SCREW, HEX HEAD CAP (1/4"-20 X 3")	4	A150-***3-****-*0*	12516-26	Stainless Steel
352	SCREW, HEX HEAD CAP (5/16"-18 X 3/4")	10	A150-***3-****-*0*	12536-26	Stainless Steel
353	SCREW, HEX HEAD CAP (3/8"-16 X 1-3/4")	28	A150-***3-****-*0*	12581-26	Stainless Steel
361	NUT, FLANGE (3/8"-16)	28	A150-***3-****-*0*	12612-26	Stainless Steel
362	NUT (5/8"-11)	2	All Models	12579-25	Plated Steel
371	WASHER, LOCK (1/4")	4	A150-***3-****-*0*	12350-26	Stainless Steel
372	WASHER, SPLIT LOCK (3/8")	28	A150-***3-****-*0*	12316-26	Stainless Steel
381	WASHER, FLAT (1/4")	4	A150-***3-****-*0*	12300-26	Stainless Steel
382	FLAT WASHER, (5/16")	10	A150-***3-****-*0*	12310-26	Stainless Steel
383	WASHER (3/8")	28	A150-***3-****-*0*	12303-26	Stainless Steel
390	N/A				
400	GROUNDING LUG (NOT SHOWN)	1	Optional	13481-20	Aluminum
	Magnalube .75 OZ.		As Required, All Models	13404-00	Grease

* Any Character

‡ , Δ Only sold as part of assembly

ASSEMBLY PART NUMBERS	PUMP MODEL	PART NO.	MATERIAL
‡ MAIN AIR VALVE ASSEMBLY 230, 240, 250, 260, 270, 280, 290, 300	A150-*A*****-*** A150-*33-****-***	AMK-150-A AMK-150-3	Various Various
Δ PILOT VALVE ASSEMBLY 80, 100, 110, 120, 130, 140	A150-*A*****-*** A150-*33-****-***	APK-150-A APK-150-3	Various Various

FLANGED STAINLESS STEEL PTFE SHORT STROKE A150-F*3-T***-***



PARTS LIST - FLANGED STAINLESS STEEL SHORT STROKE

A150-F*3-T***-***

ITEM	DESCRIPTION	QTY	PUMP MODEL	PART NO.	MATERIAL
10	DISCHARGE MANIFOLD - FLANGED	1	A150-F*3-****-***	11336-26	Stainless Steel
20	BALL	4	A150-***-V***-*** A150-***-E***-*** A150-***-G***-*** A150-***-N***-*** A150-***-S***-*** A150-***-T***-***	11010-13 11010-15 11010-19 11010-21 11010-23 11010-59	Viton®/FKM EPDM Geolast® Buna-N Santoprene® PTFE
30	VALVE SEAT	4	A150-***-A*-*** A150-***-3*-*** A150-***-P*-*** A150-***-Y*-***	10930-20 10930-26 10930-39 10930-42	Aluminum Stainless Steel Polypropylene Nylon
40	O-RING, VALVE SEAT	4	A150-***-N***-*** A150-***-V***-*** A150-***-E***-*** A150-***-T***-***	11952-11 11952-13 11952-15 11952-17	Nitrile Viton®/FKM EPDM PTFE
50	OUTER CHAMBER	2	A150-**3-****-***	10727-26	Stainless Steel
61&62	INTERMEDIATE	1	A150-*A*-****-*** A150-*33-****-***	11525-20 11525-26	Aluminum Stainless Steel
63	INNER CHAMBER	2	A150-*AA-****-*** A150-*33-****-***	11806-20 11806-26	Aluminum Stainless Steel
70&90	DIAPHRAGM ROD ASSEMBLY (SHORT STROKE)	1	A150-***-T***-***	35004-00	Stainless Steel
80	VALVE SLEEVE	1	All Models	10107-31 Δ	Acetal
100	INNER SPACER (PILOT SLEEVE)	3	All Models	10205-40 Δ	Polypropylene
110	O-RING (PILOT SLEEVE)	4	All Models	11919-16 Δ	Urethane
120	END SPACER (PILOT SLEEVE)	2	All Models	10208-40 Δ	Polypropylene
130	O-RING (END SPACER)	2	All Models	11919-11 Δ	Nitrile
140	LIP SEAL (DIAPHRAGM ROD)	2	All Models	12002-76 Δ	Nitrile
150	RETAINING PLATE	2	All Models	12717-54	Nylon
160	BUMPER	2	All Models	12317-16	Urethane
170	INNER DIAPHRAGM PLATE (SHORT STROKE) (PTFE MODELS ONLY)	2	A150-*A*-T***-*** A150-*33-T***-***	11114-20 11114-26	Aluminum Stainless Steel
180	DIAPHRAGM	2	A150-***-N***-*** A150-***-V***-*** A150-***-E***-*** A150-***-G***-*** A150-***-S***-***	10614-11 10614-13 10614-15 10614-19 10614-23	Buna-N Viton®/FKM EPDM Geolast® Santoprene®
190	OVERLAY (DIAPHRAGM)	2	A150-***-T***-***	11410-59	PTFE
200&210	OUTER DIAPHRAGM PLATE WITH STUD	2	A150-**3-****-***	11221-26	Stainless Steel
220	SUCTION MANIFOLD - FLANGED	1	A150-FA3-****-***	11337-26	Stainless Steel
230	GASKET, AIR VALVE	1	All Models	12124-19 ‡	Nitrile
240	SHUTTLE PLATE	1	All Models	10450-77 ‡	Ceramic
250	SHUTTLE	1	All Models	10430-00 ‡	Special
260	AIR VALVE BODY	1	A150-*A*-****-*** A150-*33-****-***	11618-20 ‡ 11618-26 ‡	Aluminum Stainless Steel
270	AIR VALVE SPOOL	1	All Models	10483-31 ‡	Acetal

PARTS LIST - FLANGED STAINLESS STEEL SHORT STROKE

A150-F*3-T***-***

ITEM	DESCRIPTION	QTY	PUMP MODEL	PART NO.	MATERIAL
280	LIP SEAL (AIR VALVE)	2	All Models	12003-76 ‡	Nitrile
290	O-RING (AIR VALVE END PLUG)	1	All Models	11913-11 ‡	Nitrile
300	AIR VALVE END PLUG	1	A150-*A*-*-*-*-* A150-*3*-*-*-*-*	11706-20 ‡ 11706-26 ‡	Aluminum Stainless Steel
311&312	MUFFLER w/ BUSHING	1	A150-*-*-*-*-*0* Optional	13013-00 13010-00	Polypropylene Metal
320	INNER CHAMBER GASKET	2	All Models	12123-19	Nitrile
330	N/A				
340	SCREW, SELF-LOCKING PHILLIPS (#6-32 X 3/8")	6	All Models	12571-26	Stainless Steel
351	SCREW, HEX HEAD CAP (1/4"-20 X 3")	4	A150-*3*-*-*-*-*0*	12516-26	Stainless Steel
352	SCREW, HEX HEAD CAP (5/16"-18 X 3/4")	10	A150-*3*-*-*-*-*0*	12536-26	Stainless Steel
353	SCREW, HEX HEAD CAP (3/8"-16 X 1-3/4")	28	A150-*3*-*-*-*-*0*	12581-26	Stainless Steel
361	NUT, FLANGE (3/8"-16)	28	A150-*3*-*-*-*-*0*	12612-26	Stainless Steel
362	NUT (5/8"-11)	2	All Models	12579-25	Plated Steel
371	WASHER, LOCK (1/4")	4	A150-*3*-*-*-*-*0*	12350-26	Stainless Steel
372	WASHER, SPLIT LOCK (3/8")	28	A150-*3*-*-*-*-*0*	12316-26	Stainless Steel
381	WASHER, FLAT (1/4")	4	A150-*3*-*-*-*-*0*	12300-26	Stainless Steel
382	FLAT WASHER, (5/16")	10	A150-*3*-*-*-*-*0*	12310-26	Stainless Steel
383	WASHER (3/8")	28	A150-*3*-*-*-*-*0*	12303-26	Stainless Steel
390	N/A				
400	GROUNDING LUG (NOT SHOWN)	1	Optional	13481-20	Aluminum
	Magnalube .75 OZ.		As Required, All Models	13404-00	Grease

* Any Character

‡ , Δ Only sold as part of assembly

ASSEMBLY PART NUMBERS	PUMP MODEL	PART NO.	MATERIAL
‡ MAIN AIR VALVE ASSEMBLY 230, 240, 250, 260, 270, 280, 290, 300	A150-*A*-*-*-*-* A150-*3*-*-*-*-*	AMK-150-A AMK-150-3	Various Various
Δ PILOT VALVE ASSEMBLY 80, 100, 110, 120, 130, 140	A150-*A*-*-*-*-* A150-*3*-*-*-*-*	APK-150-A APK-150-3	Various Various