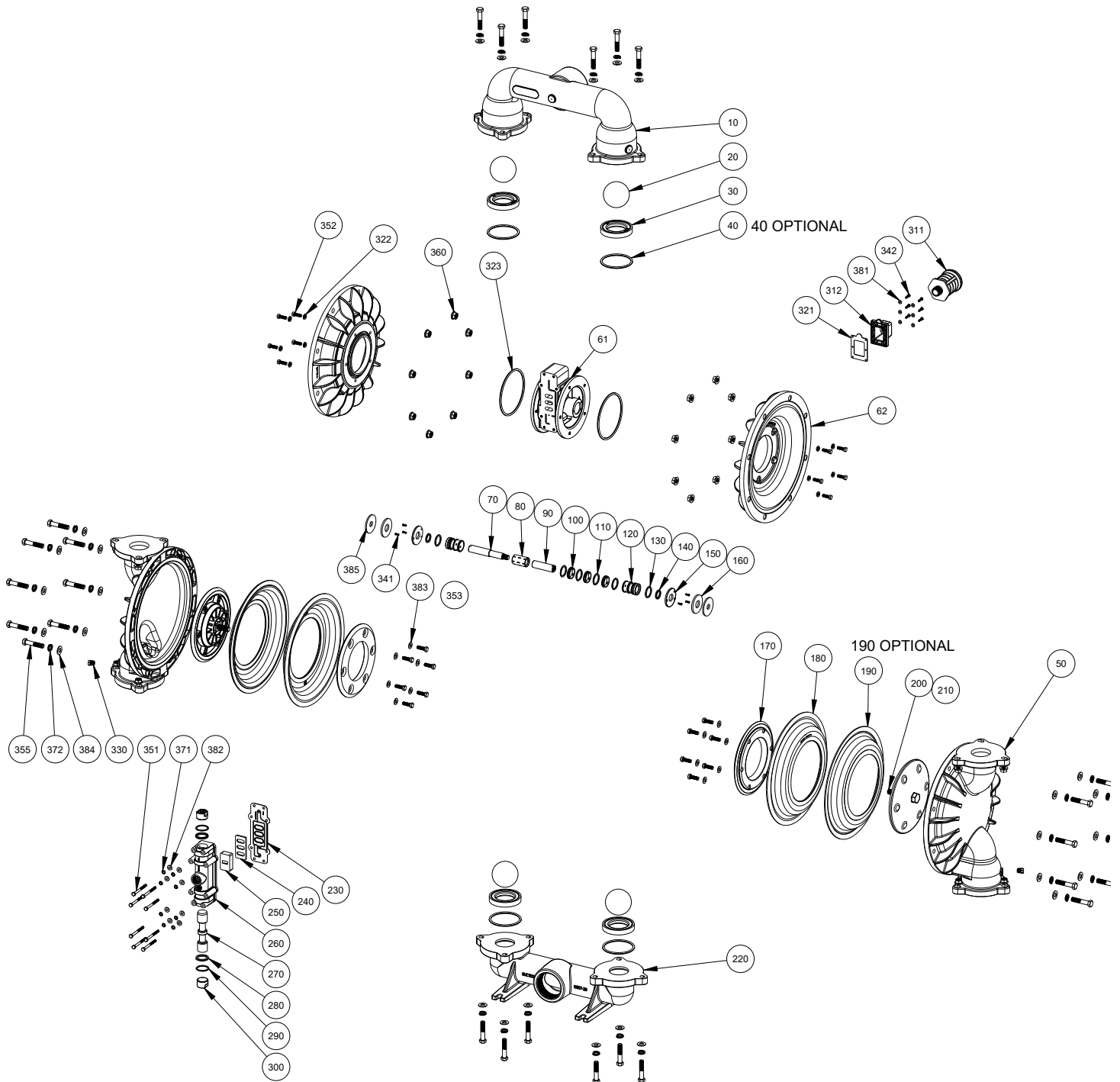


# EXPLODED VIEW & PARTS LIST

ALUMINUM, A300-\*AA-\*\*\*\*-\*\*\*



# PARTS LIST - ALUMINUM, A300-\*AA-\*\*\*\*-\*\*\*

NO.	DESCRIPTION	QTY	PUMP MODEL	PART NO.	MATERIAL
10	DISCHARGE MANIFOLD	1	A300-NAA-****-*** A300-BAA-****-***	10519-20-NPT 10519-20-BSPT	Aluminum Aluminum
20	BALL	4	A300-*A*-*V**-* A300-*A*-*E**-* A300-*A*-*G**-* A300-*A*-*N**-* A300-*A*-*S**-* A300-*A*-*T**-*	11007-13 11007-15 11007-19 11007-21 11007-23 11007-45	Viton®/FKM EPDM Geolast® Buna-N Santoprene® PTFE
30	VALVE SEAT  (VALVE SEATS 10905-13, -15 & -19 HAVE INTEGRAL VALVE & O-RING)	4	A300-*A*-*V*-*** A300-*A*-*E*-*** A300-*A*-*N*-*** A300-*A*-*A*-*** A300-*A*-*3*-*** A300-*A*-*Y*-***	10905-13 10905-15 10905-19 10905-20 10905-26 10905-42	Viton®/FKM EPDM Buna-N Aluminum Stainless Steel Nylon
40	O-RING (VALVE SEAT)  (OPTIONAL- ONLY USED WITH A300-*A*-*A*-***, A300-*A*-*3*-*** & A300-*A*-*Y*-*** )	4	A300-*A*-*N*-*** A300-*A*-*V*-*** A300-*A*-*E*-*** A300-*A*-*T*-***	11934-11 11934-13 11934-15 11934-17	Nitrile Viton®/FKM EPDM PTFE
50	OUTER CHAMBER	2	A300-*AA-****-***	10704-A300-20	Aluminum
61	INTERMEDIATE	1	All Models	11520-A300-20	Aluminum
62	INNER CHAMBER	2	All Models	11802-A300-20	Aluminum
70 & 90	DIAPHRAGM ROD ASSEMBLY	1	A300-*AA-****-***	35006-00	Stainless Steel
80	PILOT SLEEVE	1	All Models	10106-31 Δ	Acetal
100	INNER SPACER, PILOT SLEEVE	3	All Models	10205-40 Δ	Polypropylene
110	O-RING (PILOT SLEEVE SPACER)	4	All Models	11919-16 Δ	Urethane
120	END SPACER, PILOT SLEEVE	2	All Models	10206-40 Δ	Polypropylene
130	O-RING (END SPACER)	2	All Models	11919-11 Δ	Nitrile
140	LIP SEAL (AIR VALVE)	2	All Models	12002-76 Δ	Nitrile
150	RETAINING PLATE	2	All Models	12712-A300-20	Aluminum
160	BUMPER	2	All Models	12309-16	Urethane
170	INNER DIAPHRAGM PLATE	2	All Models	11107-20	Aluminum
180	DIAPHRAGM  (BACKUP)	2	A300-*A*-*N***-* A300-*A*-*V***-* A300-*A*-*E***-* A300-*A*-*G***-* A300-*A*-*S***-* A300-*A*-*T***-*(PTFE)	10608-11 10608-13 10608-16 10608-19 10608-23 10608-23	Buna-N Viton®/FKM Urethane Geolast® Santoprene® Santoprene®
190	OVERLAY (PTFE ONLY)	2	A300-*A*-*T***-*	11407-59	PTFE
200 & 210	OUTER DIAPHRAGM PLATE W/ THREADED STUD	2	A300-*AA-****-***	11222-20	Aluminum
220	SUCTION MANIFOLD	1	A300-NAA-****-*** A300-BAA-****-***	10517-20-NPT 10517-20-BSPT	Aluminum Aluminum
230	GASKET, AIR VALVE	1	All Models	12115-19 ‡	Nitrile
240	SHUTTLE PLATE	1	All Models	10414-26 ‡	Stainless Steel
250	SHUTTLE	1	All Models	10413-32 ‡	Special
260	AIR VALVE BODY	1	All Models	11613-20 ‡	Aluminum
270	AIR VALVE SPOOL	1	All Models	10412-31 ‡	Acetal

# PARTS LIST - ALUMINUM, A300-\*AA-\*\*\*\*-\*\*\*

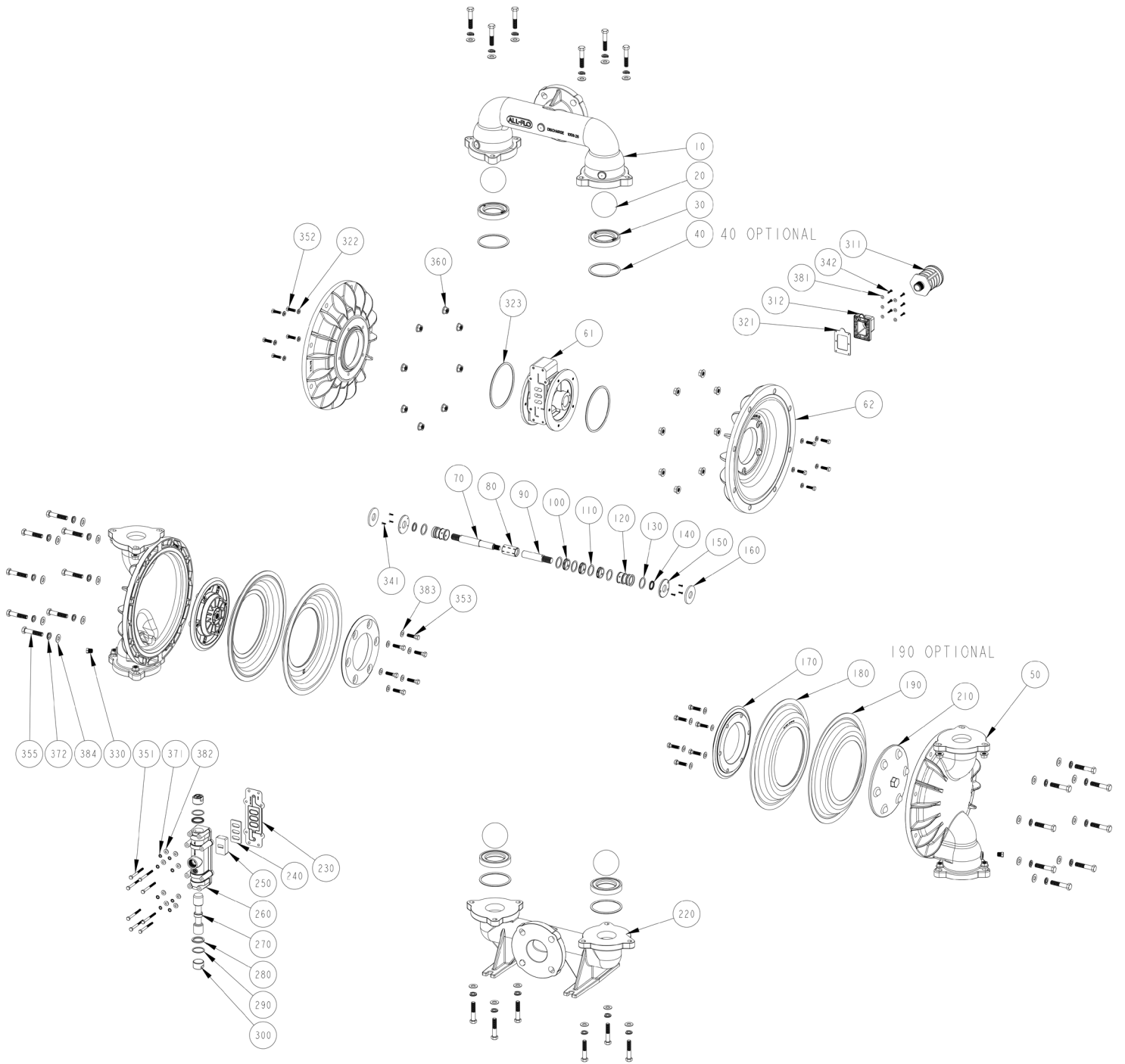
ITEM	DESCRIPTION	QTY	PUMP MODEL	PART NO.	MATERIAL
280	LIP SEAL (DIAPHRAGM ROD)	2	All Models	12003-76 ‡	Nitrile
290	O-RING (AIR VALVE END PLUG)	2	All Models	11913-11 ‡	Nitrile
300	AIR VALVE END PLUG	2	All Models	11706-20 ‡	Aluminum
311	MUFFLER	1	All Models	13001-00	Polypropylene
	OPTIONAL - PREMIUM METAL		Optional A300-*A*-****-*Z*; Z=4, 8, C, E, G, I	13009-00 13010-00	Aluminum Aluminum
312	MUFFLER PLATE	1	All Models	13107-60	Polypropylene
	OPTIONAL - PREMIUM METAL		A300-*A*-****-*Z*; Z=4, 8, C, E, G, I	13107-20-125	Aluminum
321	MUFFLER GASKET	1	All Models	12108-11	Nitrile
322	WASHER, SEALING	10	All Models	12352-26	Stainless Steel
323	O-RING (CHAMBER/INTERMEDIATE)	2	All Models	11956-11	Nitrile
330	PIPE PLUG	2	A300-*AA-****-***	12205-42	Nylon
341	SCREW, PHILLIPS FLAT HEAD (#6-32 X 1/2")	6	All Models	12550-050-MS-26	Stainless Steel
342	SCREW, PHILLIPS PAN (#8-32 X 3/4" [1-1/8"])	6	All Models	12531-075-MS-26	Stainless Steel
	Optional - Premium Metal		A300-*A*-****-*Z*; Z=4, 8, C, E, G, I	12531-113-26	Stainless Steel
351	CAP SCREW (1/4" -20 X 3")	8	A300-*AA-****-***	12516-25	Plated Steel
			Optional	12516-26	Stainless Steel
352	CAP SCREW, HEX HEAD (5/16"-18 X 1")	10	All Models	12537-26	Stainless Steel
353	CAP SCREW (3/8" -16 X 1-1/4")	12	All Models	12534-25	Plated Steel
355	CAP SCREW (1/2" -13 X 2-1/2")	28	A300-*AA-****-***	12522-25	Plated Steel
			Optional	12522-26	Stainless Steel
360	NUT, FLANGE (1/2" -13)	28	A300-*AA-****-***	12582-25	Plated Steel
			Optional	12582-26	Stainless Steel
371	WASHER, LOCK (1/4")	8	A300-*AA-****-***	12350-25	Plated Steel
			Optional	12350-26	Stainless Steel
372	WASHER, SPLIT LOCK (1/2")	28	A300-*AA-****-***	12323-25	Plated Steel
			Optional	12323-26	Stainless Steel
381	WASHER (5/32")	6	All Models	12311-26	Stainless Steel
382	WASHER (1/4")	8	A300-*AA-****-***	12300-25	Plated Steel
			Optional	12300-26	Stainless Steel
383	WASHER (3/8")	12	All Models	12303-25	Plated Steel
384	WASHER (1/2")	28	A300-*AA-****-***	12306-25	Plated Steel
			Optional	12306-26	Stainless Steel
385	WASHER, CUSTOM	2	All Models	12312-25	Plated Steel
390	N/A				
400	GROUNDING LUG (NOT SHOWN)	1	All Models	13480-20	Aluminum
	Magnalube .75 OZ.		As Required, All Models	13404-00	Grease

\* Any Character

‡ , Δ Only sold as part of assembly

ASSEMBLY PART NUMBERS	PUMP MODEL	PART NO.	MATERIAL
‡ PILOT VALVE ASSEMBLY	A300-*AA-****-***	APK-300-A	Various
80, 100, 110, 120, 130, 140			
Δ MAIN AIR VALVE ASSEMBLY	A300-*AA-****-***	AMK-300-A	Various
230, 240, 250, 260, 270, 280, 290, 300			

# STAINLESS STEEL, A300-FA3-\*\*\*\*-\*\*\*



# PARTS LIST - STAINLESS STEEL, A300-FA3-\*\*\*\*-\*\*\*

ITEM	DESCRIPTION	QTY	PUMP MODEL	PART NO.	MATERIAL
10	DISCHARGE MANIFOLD	1	A300-FA3-****-***	10511-26	Stainless Steel
20	BALL	4	A300-*A*-*V**_*** A300-*A*-*E**_*** A300-*A*-*G**_*** A300-*A*-*N**_*** A300-*A*-*S**_*** A300-*A*-*T**_***	11007-13 11007-15 11007-19 11007-21 11007-23 11007-45	Viton®/FKM EPDM Geolast® Buna-N Santoprene® PTFE
30	VALVE SEAT  (VALVE SEATS 10905-13, -15 & -19 HAVE INTEGRAL VALVE & O-RING)	4	A300-*A*-*V**_*** A300-*A*-*E**_*** A300-*A*-*N**_*** A300-*A*-*A**_*** A300-*A*-*S**_*** A300-*A*-*Y**_***	10905-13 10905-15 10905-19 10905-20 10905-26 10905-42	Viton®/FKM EPDM Buna-N Aluminum Stainless Steel Nylon
40	O-RING (VALVE SEAT)  (OPTIONAL- ONLY USED WITH VALVE SEATS 10905-20, -26 & -42)	4	A300-*A*-*N**_*** A300-*A*-*V**_*** A300-*A*-*E**_*** A300-*A*-*T**_***	11934-11 11934-13 11934-15 11934-17	Nitrile Viton®/FKM EPDM PTFE
50	OUTER CHAMBER	2	A300-FA3-****-***	10704-A300-26	Stainless Steel
61	INTERMEDIATE	1	All Models	11520-A300-20	Aluminum
62	INNER CHAMBER	2	All Models	11802-A300-20	Aluminum
70 & 90	DIAPHRAGM ROD ASSEMBLY	1	A300-FA3-****-***	35007-00	Stainless Steel
80	PILOT SLEEVE	1	All Models	10106-31 Δ	Acetal
100	INNER SPACER, PILOT SLEEVE	3	All Models	10205-40 Δ	Polypropylene
110	O-RING (PILOT SLEEVE SPACER)	4	All Models	11919-16 Δ	Urethane
120	END SPACER, PILOT SLEEVE	2	All Models	10206-40 Δ	Polypropylene
130	O-RING (END SPACER)	2	All Models	11919-11 Δ	Nitrile
140	LIP SEAL (AIR VALVE)	2	All Models	12002-76 Δ	Nitrile
150	RETAINING PLATE	2	All Models	12712-A300-20	Aluminum
160	BUMPER	2	All Models	12309-16	Urethane
170	INNER DIAPHRAGM PLATE	2	All Models	11107-20	Aluminum
180	DIAPHRAGM  (BACKUP)	2	A300-*A*-*N**_*** A300-*A*-*V**_*** A300-*A*-*E**_*** A300-*A*-*G**_*** A300-*A*-*S**_*** A300-*A*-*T**_***(PTFE)	10608-11 10608-13 10608-16 10608-19 10608-23 10608-23	Buna-N Viton®/FKM Urethane Geolast® Santoprene® Santoprene®
190	OVERLAY (PTFE ONLY)	2	A300-*A*-*T**_***	11407-59	PTFE
200	N/A				
210	OUTER DIAPHRAGM PLATE	2	A300-FA3-****-***	11222-26	Stainless Steel
220	SUCTION MANIFOLD	1	A300-FA3-****-***	10510-26	Stainless Steel
230	GASKET, AIR VALVE	1	All Models	12115-19 ‡	Nitrile
240	SHUTTLE PLATE	1	All Models	10414-26 ‡	Stainless Steel
250	SHUTTLE	1	All Models	10413-32 ‡	Special
260	AIR VALVE BODY	1	All Models	11613-20 ‡	Aluminum
270	AIR VALVE SPOOL	1	All Models	10412-31 ‡	Acetal
280	LIP SEAL (DIAPHRAGM ROD)	2	All Models	12003-76 ‡	Nitrile

# PARTS LIST - STAINLESS STEEL, A300-FA3-\*\*\*\*-\*\*\*

ITEM	DESCRIPTION	QTY	PUMP MODEL	PART NO.	MATERIAL
290	O-RING (AIR VALVE END PLUG)	2	All Models	11913-11 ‡	Nitrile
300	AIR VALVE END PLUG	2	All Models	11706-20 ‡	Aluminum
311	MUFFLER	1	All Models	13001-00	Polypropylene
	OPTIONAL - PREMIUM METAL		Optional	13009-00	Aluminum
			A300-*A*-****-*Z*; Z=4, 8, C, E, G, I	13010-00	Aluminum
312	MUFFLER PLATE	1	All Models	13107-60	Polypropylene
	OPTIONAL - PREMIUM METAL		A300-*A*-****-*Z*; Z=4, 8, C, E, G, I	13107-20-125	Aluminum
321	MUFFLER GASKET	1	All Models	12108-11	Nitrile
322	WASHER, SEALING	10	All Models	12352-26	Stainless Steel
323	O-RING (CHAMBER/INTERMEDIATE)	2	All Models	11956-11	Nitrile
330	PIPE PLUG	2	A300-FA3-****-***	12205-26	Stainless Steel
341	SCREW, PHILLIPS FLAT HEAD (#6-32 X 1/2" )	6	All Models	12550-050-MS-26	Stainless Steel
342	SCREW, PHILLIPS PAN (#8-32 X 3/4" (1-1/8" )	6	All Models	12531-075-MS-26	Stainless Steel
	OPTIONAL - PREMIUM METAL		A300-*A*-****-*Z*; Z=4, 8, C, E, G, I	12531-113-26	Stainless Steel
351	CAP SCREW (1/4" -20 X 3")	8	A300-FA3-****-***	12516-26	Stainless Steel
352	CAP SCREW, HEX HEAD (5/16" -18 X 1")	10	All Models	12537-26	Stainless Steel
353	CAP SCREW (3/8" -16 X 1-1/4")	12	All Models	12534-25	Plated Steel
355	CAP SCREW (1/2" -13 X 2-1/2")	28	A300-FA3-****-***	12522-26	Stainless Steel
360	NUT, FLANGE (1/2" -13)	28	A300-FA3-****-***	12582-26	Stainless Steel
371	WASHER, LOCK (1/4")	8	A300-FA3-****-***	12350-26	Stainless Steel
372	WASHER, SPLIT LOCK (1/2")	28	A300-FA3-****-***	12323-26	Stainless Steel
381	WASHER (5/32")	6	All Models	12311-26	Stainless Steel
382	WASHER (1/4")	8	A300-FA3-****-***	12300-26	Stainless Steel
383	WASHER (3/8")	12	All Models	12303-25	Plated Steel
384	WASHER (1/2")	28	A300-FA3-****-***	12306-26	Stainless Steel
390	N/A				
400	GROUNDING LUG (NOT SHOWN)	1	Optional	13480-20	Aluminum
	Magnalube .75 OZ.		As Required, All Models	13404-00	Grease

\* Any Character  
‡ , Δ Only sold as part of assembly

ASSEMBLY PART NUMBERS	PUMP MODEL	PART NO.	MATERIAL
‡ PILOT VALVE ASSEMBLY 80, 100, 110, 120, 130, 140	A300-FA3-****-***	APK-300-A	Various
Δ MAIN AIR VALVE ASSEMBLY 230, 240, 250, 260, 270, 280, 290, 300	A300-FA3-****-***	AMK-300-A	Various