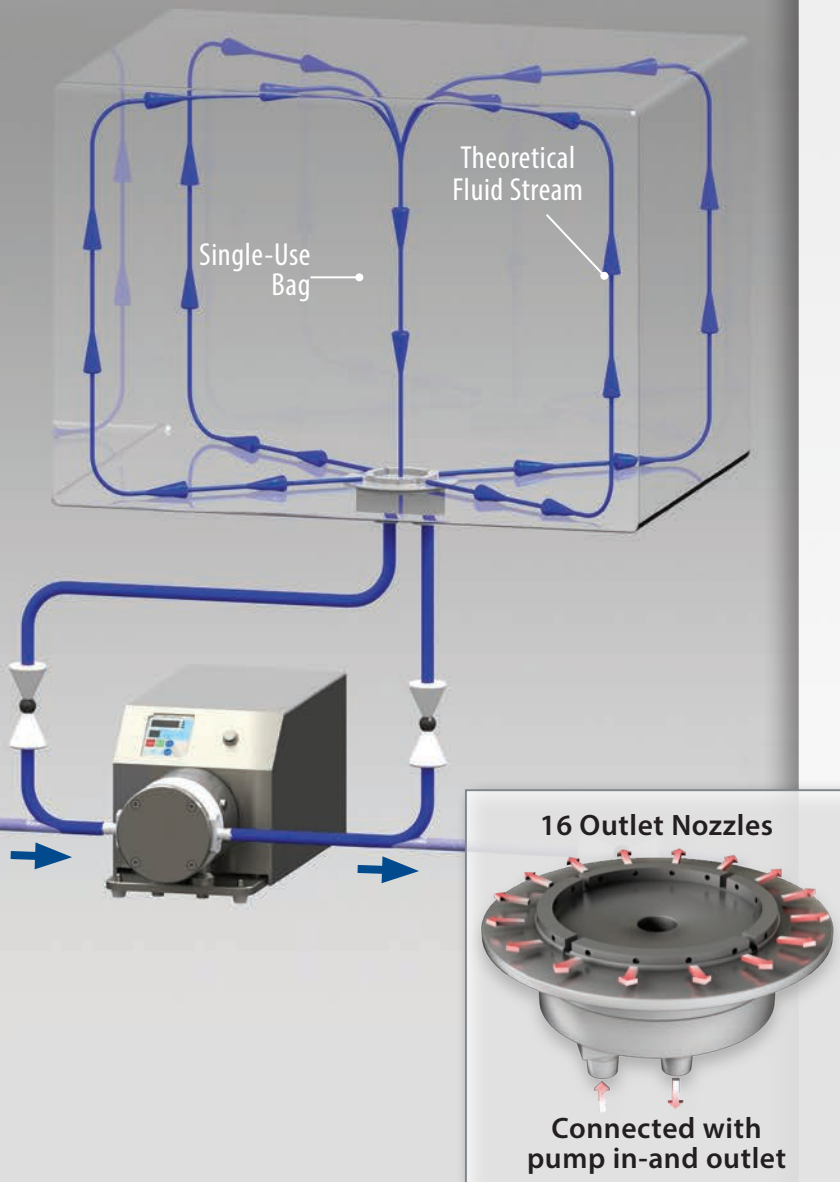


QuattroMix with RVA

a Single-Use,
Multi-Purpose Solution



QuattroMix

Combining Quattroflow Single-Use pump 1200SU with a QuattroMix enables new features to disposable mixing solutions.

The features at a glance:

- Random Vector Agitation (RVA): Reducing poor effects of vortex produced by other mixers
- Filling and emptying of the bag
- Mixing solutions by recirculation without rotating wetted parts
- Post-mixing processes like sterile filtration, flow through chromatography and more
- Mixer with 16 outlet nozzles for 360° mixing
- Exocirculation loop allows integration of in-line sensors (pH, conductivity, temperature or UV) or the use of heat exchanger for cooling/heating of media
- Suitable for 2D and 3D bags

The QuattroMix can be welded into each available bag easily.

Please ask your bag supplier or your Quattroflow distributor.

Quattroflow QF1200SU

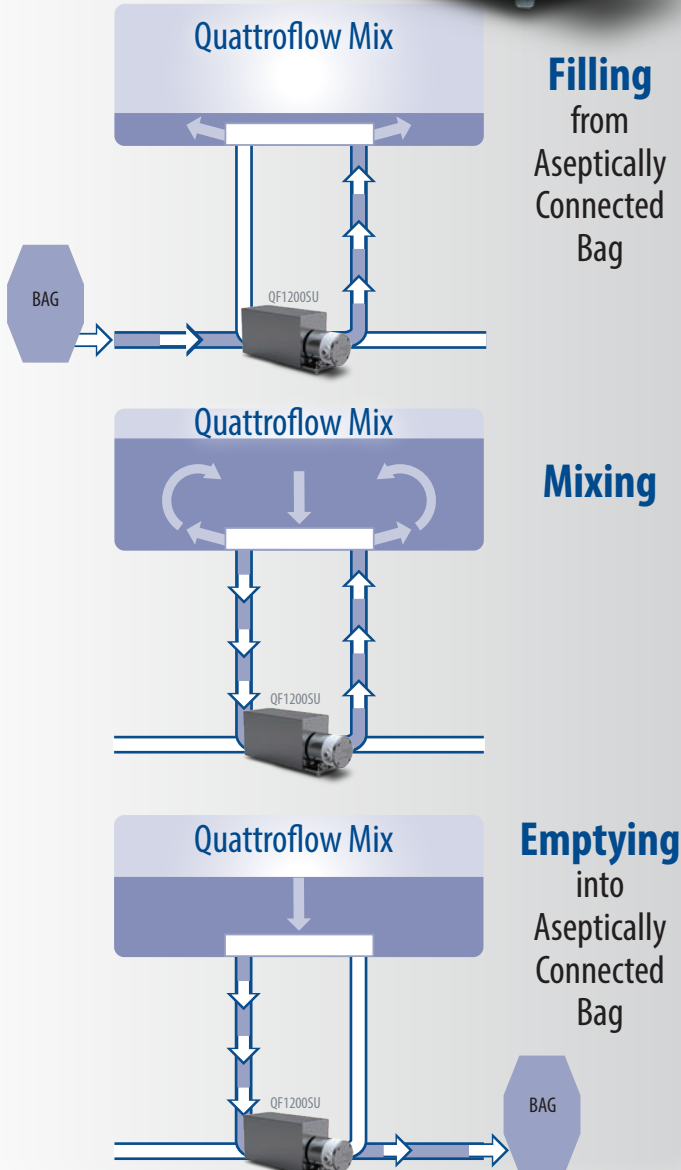
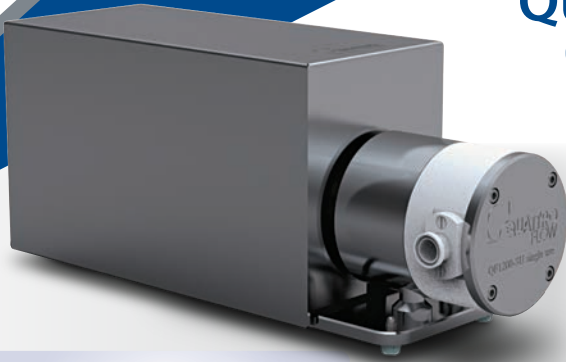
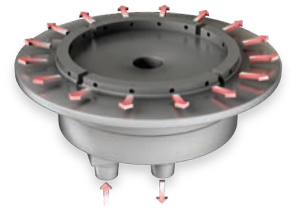
Quaternary Diaphragm Pump with QuattroMix

Features of QF1200SU Pump

- Fully disposable machined polypropylene pump chamber
- Easy replacement
- 4-piston technology
- Gentle product treatment
- No particle generation
- Low pulsation
- Linear flow characteristic
- Self-priming
- Safe dry-run operation
- Elimination of cleaning validation and cross contamination

Applications – Pump and Mixer

- Buffer/media preparation, e.g., with following sterile filtration
- Liquid/liquid mixing
- Solid/Liquid mixing (subject to specific verification)
- User custom developed/proven mixing applications



Technical Data

Flow Rate Maximum:		
Eccentric Shaft 3°		800 l/h (211 gph)
Eccentric Shaft 5°		1,200 l/h (317 gph)
Pressure:		
Temperature of Fluid < 40° C (104° F)		4 bar (58 psi)
Temperature of Fluid > 40° C (104° F)		4 bar (58 psi)
Product Wetted Materials (Standard):		
Pump Chamber		PP
Valve Plate		PP
Diaphragms		TPE
Valves		EPDM
O-rings		EPDM
QuattroMix		PE
Certificates/Proofs (Optional):		
Elastomere (product wetted)		USP <88> Cl. VI; FDA21CFR177; BSE/TSE Safe
Diameter of QuattroMix Nozzles:		
mm (in)		1.5 or 2 (.059 or .078)

The use of the Quattroflow 1200SU pump is an example. Other versions of this size (QF1200CV with integrated controller, QF1200 with injection molded pump chamber) are also suitable.