



# HOW TO CHANGE ADAPTER SETTINGS TO ACCESS THE WEB INTERFACE OF THE BIOPROTT™ FLOWMCP

## 1 Introduction

The BioProTT™ FlowMCP Series is part of our BioProTT™ Product Range and geared towards industrial applications.



Figure 1: BioProTT™ FlowMCP Series

To enable an easy and convenient setup and integration into your process environment, all devices within the BioProTT™ FlowMCP Series come with a web interface. In order to gain access to and use the web interface, however, you must adjust some of your computer settings.

**Please note:**

The steps in this TechNote describe the steps needed when using Windows 10.

⇒ If you have another operating system, or if you encounter any problems when adjusting your settings, please contact **em-tec GmbH**.

## 2 What Is the Calibration Factor?

To change your PC settings, follow these steps:

1. Open the Windows Settings and select “Network and Internet”.

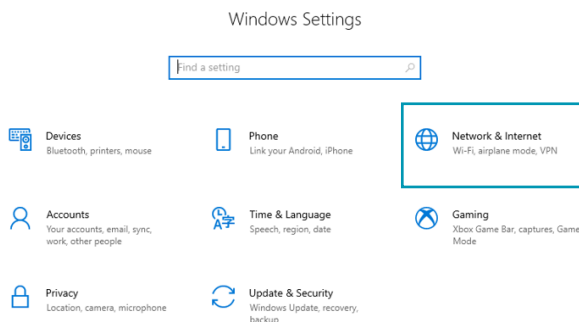


Figure 2: Open and select settings

2. Scroll down to “Advanced network settings” and select “Change adapter settings”.

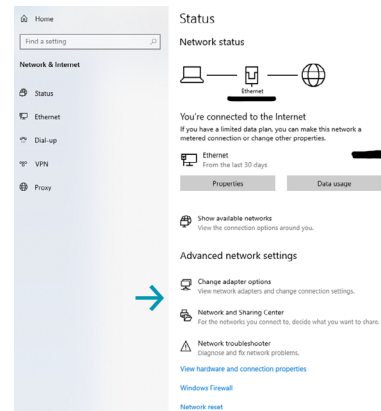


Figure 3: Change Adapter Settings

3. Right-click on the Ethernet field and select “properties” in the dialog window.

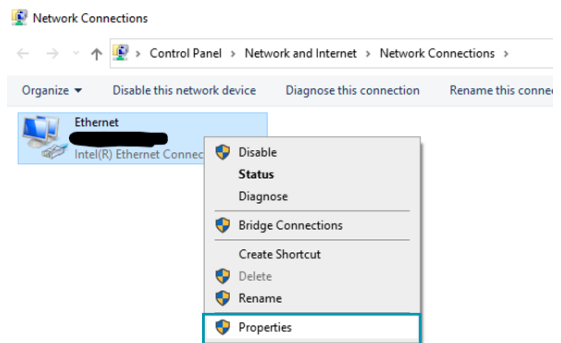


Figure 4: Ethernet: Select Properties

4. Choose the “Internet protocol, Version 4 (TCP/IPv4)” and click “Properties”.

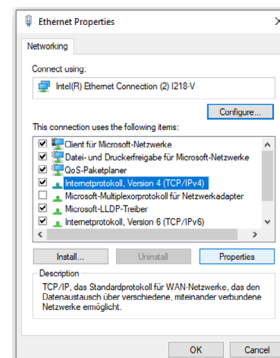


Figure 5: Choose Internet Protocol

5. Change the IP-Adress to an address within the same network as the BioProTT™ FlowMCP.

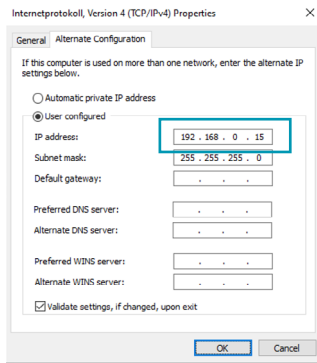


Figure 6: Change IP Address

**Please note:**

Do not change the IP address to the exact same address as the default IP Address of the BioProTT™ FlowMCP (192.168.0.12).  
 ⇒ Instead, change it to e.g. 192.168.0.15.  
 ⇒ Also: Do not change the subnet mask.

6. It is now possible to access the web interface in which the IP Address of the BioProTT™ FlowMCP can be changed to an IP address of your network.

**Please note:**

Changing the IP to a random IP address might result in a loss of the connection and difficulties in finding the device again.  
 ⇒ Make sure to change the IP address to an address that you know.  
 ⇒ Make sure to note down the IP address entered into the web interface.

### 3 Methods to Determine the Calibration Factor

In the case that the IP address of the BioProTT™ FlowMCP is lost, however, there is an option to retrieve it and to regain access to the respective device.

To do so, the following equipment and software is needed:

- computer
- USB 2.0 to USB cable
- terminal program that can read RS-232 and 500 000 Baud (e.g. Putty, HTerm, etc.)

Then, to retrieve the IP address, follow these steps:

1. Connect the USB 2.0 port of the separately powered BioProTT™ FlowMCP to the computer using the USB 2.0 to USB cable.

⇒ If the BioProTT™ FlowMCP was not connected to the computer before and consequently not recognized as COMP-port, a few settings might have to be changed in the device manager. For this,

- open the device manager on your computer.
- Go to “Universal Serial Bus controllers”, then click “USB Serial Converter”.

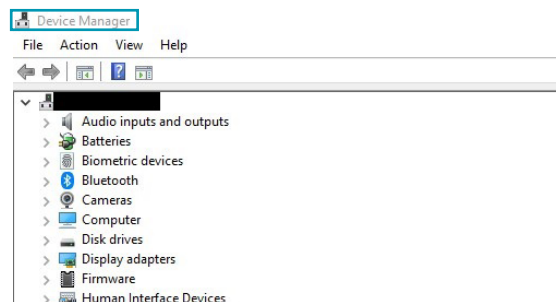


Figure 7: Device Manager

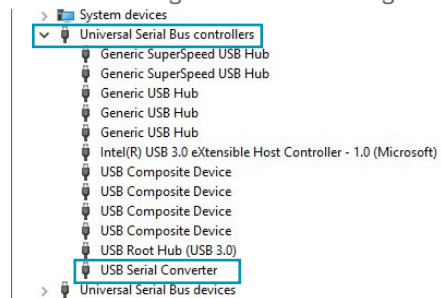


Figure 8: USB Serial Converter

2. Go to the register „Advanced“ and tick the box “Load VCP”. Then click “ok”.

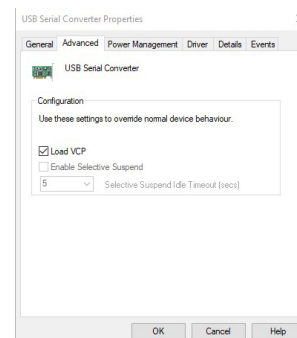


Figure 9: Register “Advanced”

3. Once the BioProTT™ FlowMCP is connected to the computer, a new COM-port will be visible.
  - ⇒ Please check that the COM-port number is lower than 20.
  - ⇒ If it is above 20, some terminal programs will be having difficulties connecting.
  - ⇒ In this case, please change the number accordingly or contact your system administrator so that they can change the number.
4. Once the BioProTT™ FlowMCP is recognized as COM-port, the terminal program can be set up and the connection be established.
5. Ensure the correct settings for the terminal program, which are:

- Baud: 500 000
- Stop: 1
- Data: 8
- Parity: none

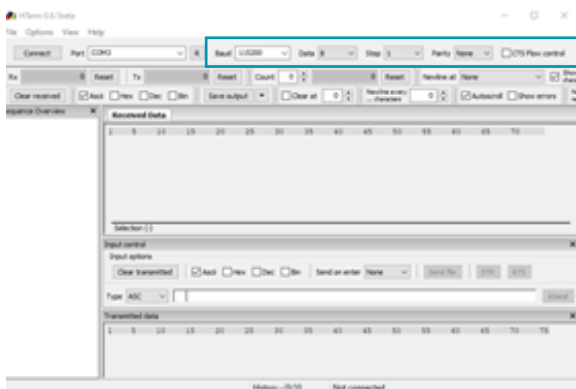


Figure 10: Correct Settings

6. To retrieve the IP address of the BioProTT™ FlowMCP, the power supply needs to be disrupted for around a second.

7. Once the BioProTT™ FlowMCP is powered again, different information will be displayed by the program, which might look the same, or similar, to the picture below:



Figure 11: Received Data

Here, the currently assigned IP address of the BioProTT™ FlowMCP is displayed as well.

- ⇒ This IP address can be used when accessing the web interface again.
- ⇒ Based on this information, the settings can be (re-) changed.

## 4 Contact

If there are any questions concerning the information in this document, or if you are having trouble at any point during the setup and installation of the BioProTT™ FlowMCP, please contact em-tec GmbH.

You can reach us at:

**em-tec GmbH**  
 Lerchenberg 20  
 86923 Finning  
 GERMANY

Phone: +49 8806 9236 0  
 Fax: +49 8806 9236 50  
 E-Mail: [em-tec-info@psgdover.com](mailto:em-tec-info@psgdover.com)  
 Internet: [psgdover.com/em-tec](http://psgdover.com/em-tec)