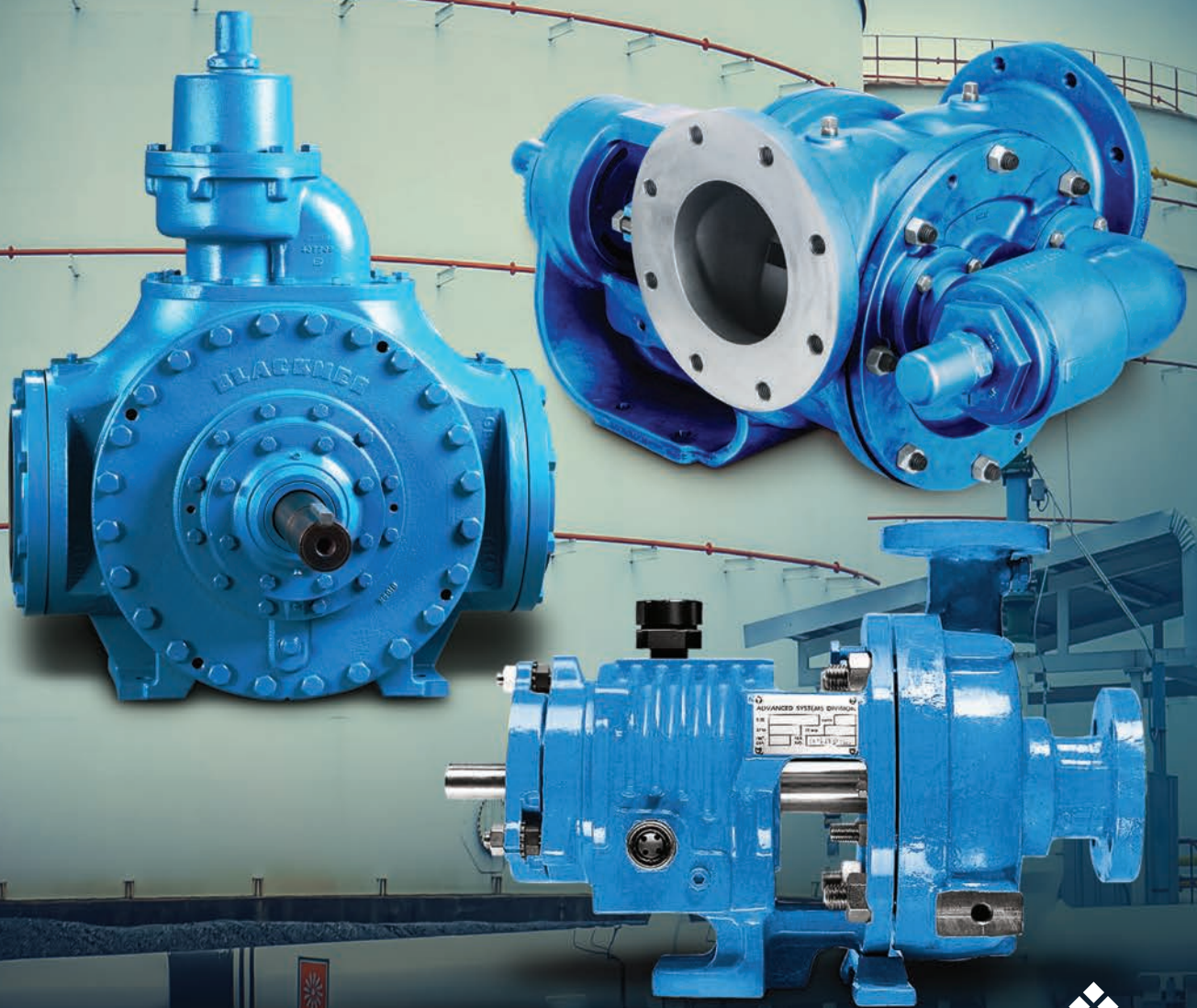


# Liquid Terminals

PRODUCT BROCHURE



Where Innovation Flows



Blackmer® is the global leader in the design and manufacture of transfer, transloading and blending solutions for use in petroleum and chemical liquid-storage terminals. Blackmer Sliding Vane, Internal Gear and Centrifugal Pumps have been developed to be reliable and affordable solutions that meet or exceed the strict operational and safety demands of a modern Liquid Terminal facility.

## EXPERT SOLUTIONS FOR LIQUID TERMINAL APPLICATIONS

When it comes to optimizing flow performance, reducing costs and increasing profitability, the world's most productive Liquid Terminal operations share a common demand – Better Get Blackmer.

### Challenges of Liquid Terminals Applications

Blackmer pump technologies overcome a liquid terminal's unique operational challenges in the safest, most efficient and profitable way possible.

Handling common liquid-terminal commodities, and the large volumes in which they are stored and transferred, requires pump technologies that are able to deliver reliability, volumetric consistency, efficiency and energy savings when moving liquids into and out of tank farms, whether the mode of transportation is barge, tanker ship, pipeline, railcar or transport truck.

#### Cost Control

- Leak-free design options
- Designed for ease of maintenance
- Drop-in replacement options for many competitors pumps



#### Productivity

- Patented pump features
- High-quality construction
- Minimal maintenance



#### Plant Safety

- Leak-free design options
- Various seal options



#### Quality

- Positive displacement and centrifugal options for high level of operational consistency
- World class operations and testing facilities ensure pumps meet your exacting standards



#### Emissions Control

- Seal-less magnetic drive pumping options
- Mechanical seal options available for leakage detection and containment



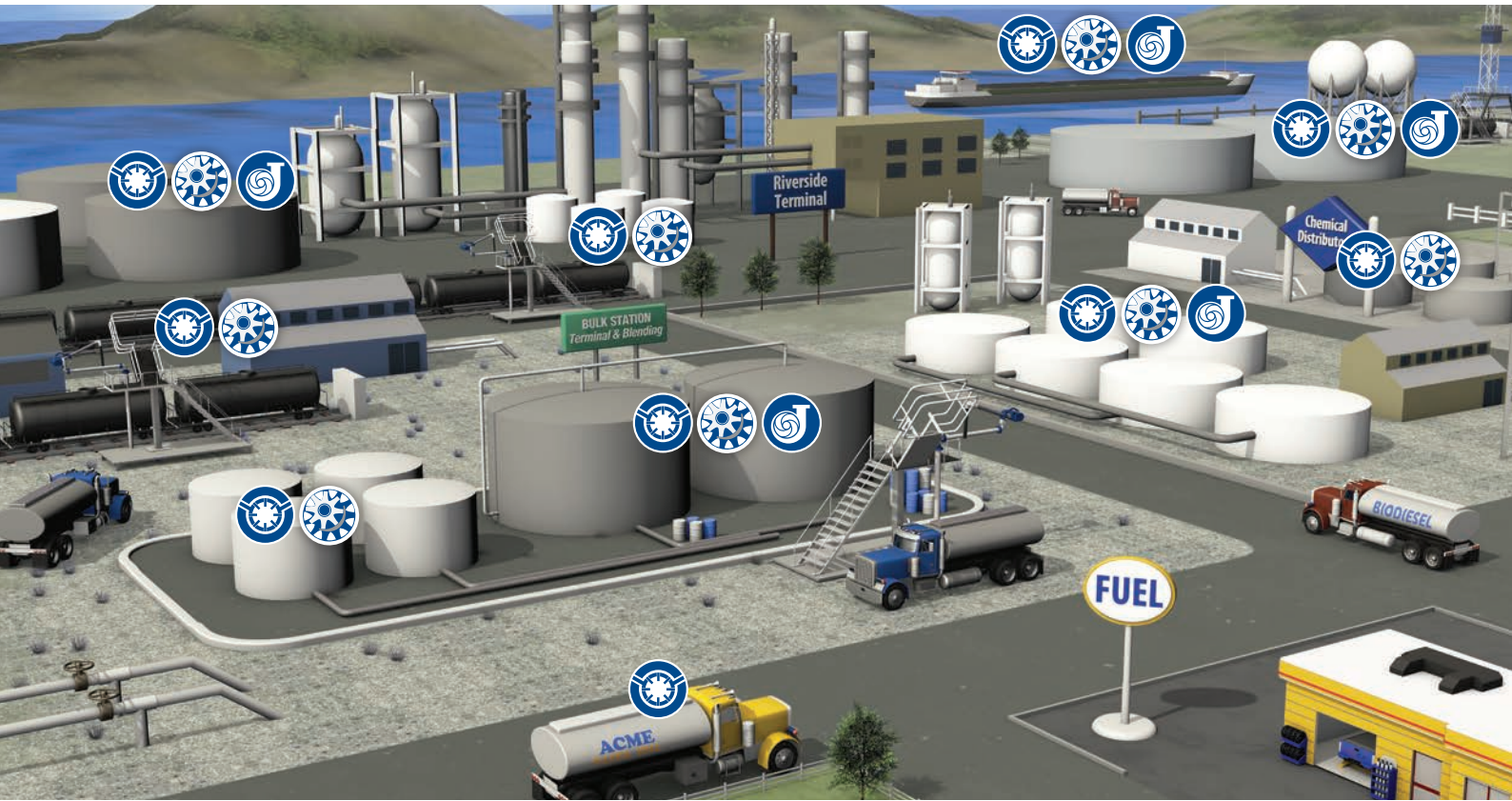
#### Applications

- Crude Oil
- Gasolines
- Fuel Oil
- Lube Oils
- Ethanol
- Biodiesel
- Processed Chemicals
- Bitumen, Asphalt
- Potassium Hydroxide (KOH)
- Anti-Gel Agents
- Soy, Palm and other Virgin Vegetable Oils
- Animal Fats
- Molasses
- Aromatic diisocyanates (MDI/TDI)

# Blackmer Liquid Terminals Solutions

## Delivering the widest range of capability for your fluid transfer needs

Whether you have a need for high suction lift, dry prime, or need to transfer challenging high viscosity fluids over long distance, Blackmer has a solution to meet your needs. Use the table below to find options that fit your pumping conditions.



	HIGH TEMPERATURE (>350F)	HIGH VISCOSITY (> 5000 CP)	LOW VISCOSITY (< 5 CP)	MAGNETIC DRIVE (SEAL-LESS)	DRY RUN/ SELF PRIMING	HIGH SUCTION-LIFT CAPABILITY	LINE STRIPPING	ABRASIVES AND SOLIDS HANDLING	STAINLESS STEEL CONSTRUCTION
--	--------------------------	----------------------------	------------------------	----------------------------	-----------------------	------------------------------	----------------	-------------------------------	------------------------------



### VANE PUMPS

ML/HXL		•	•		•	•	•		
NP/SNP			•		•	•	•		•
GNX/X			•		•	•	•		
SGL			•		•	•	•		
MAGNES			•	•	•	•	•	•	•



### GEAR PUMPS

G Series	•	•			•*			•	•
E Series	•	•		•				•	•
V Series	•	•			•*			•	•



### CENTRIFUGAL PUMPS

Blackmer Centrifugal	•*		•						•*
----------------------	----	--	---	--	--	--	--	--	----

\* Consult factory



PSG Grand Rapids  
1809 Century Avenue SW  
Grand Rapids, MI 49503-1530  
USA

P: +1 (616) 241-1611  
info@blackmer.com  
psgdover.com/blackmer



Where Innovation Flows

ATK3000-01 06/23-A4

Authorized PSG® Partner:

Copyright 2023 PSG®, a Dover company