

HD602-LU

HD Series

Liquid Transfer and Vapor Recovery Unit driven @ 605 RPM

Gas

Propylene $n = 1.15$. MW = 45.07

Ethylene $n = 1.22$. MW = 28.05

Butane $n = 1.09$ MW = 58.12

Inlet

3 - 263 psig

(0.2 – 18.5 kg/cm²g)

-22 - 86°F (-30 – 30°C)

Outlet

57 - 285 psig

(4 - 20 kg/cm²g)

Compressor Construction

PTFE O-rings

Iron Gaskets

Accessories

25 HP motor

Liquid trap with Float switch Suction strainer

4-way flow control valve

High discharge temperature switch with Thermowell

High discharge and Low suction pressure switches

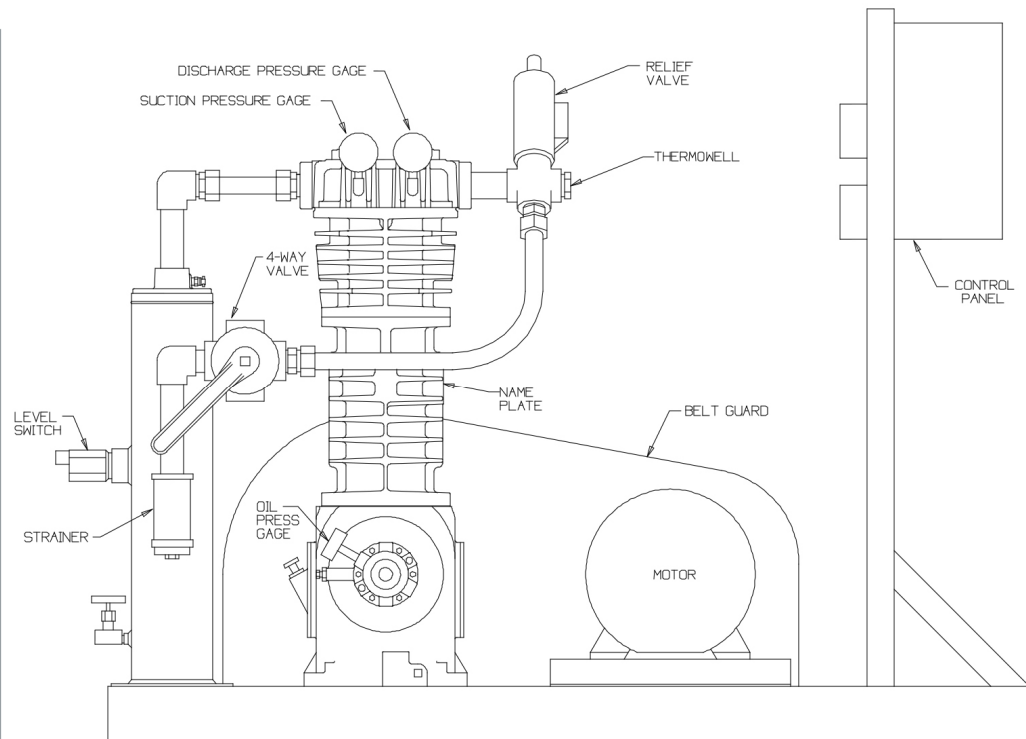
Low oil pressure switch

ASME code discharge relief valve

Pressure gauges for suction and discharge gas pressures and crankcase oil pressure

Control panel with shutdown and alarm functions

All electrical devices are explosion proof



AE91-98192-1

Installation Example

A typical liquefied gas transfer compressor, this HD602 distance piece unit is being used in South Korea to unload rail tank cars into storage tanks. The trap prevents entry of liquid into the compressor and the 4-way valve allows both liquid transfer and recovery of vapors. The strainer, level switch, temperature switch, pressure switches, and relief valve all help protect the compressor from various potential problems.