

## HD601-LU

HD Series  
Carbon Dioxide Transfer  
Compressor driven @ 680 RPM

### Gas

Carbon Dioxide (CO<sub>2</sub>)  
n = 1.31  
MW = 44.01

### Inlet

165 - 315 psia  
(11.6 - 22.1 kg/cm<sup>2</sup> a)  
0° F (-18° C)

### Outlet

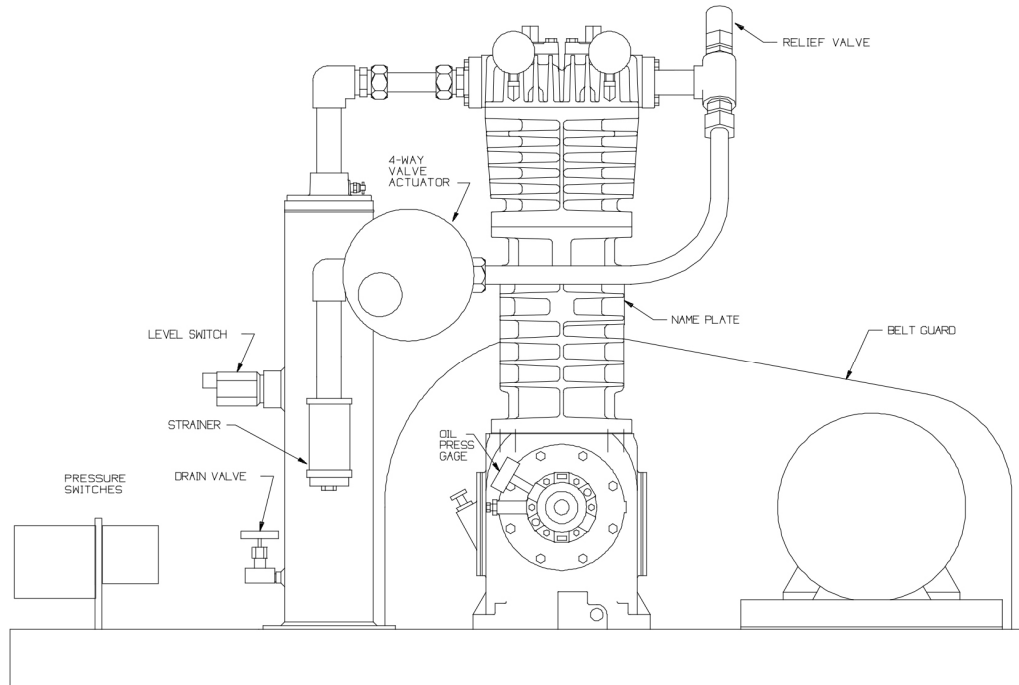
335 psia  
(23.6 kg/cm<sup>2</sup> a)

### Compressor Construction

Ductile Iron Valves with PEEK Plates  
Buna-N O-Rings  
Ductile Iron Head and Cylinder

### Accessories

4-Way Flow Control Valve  
30 HP TEFC Motor  
Low Oil Pressure Switch  
4-Way Valve Actuator  
Suction Strainer  
Discharge Pressure Switch  
Liquid Trap  
Pressure Gauges  
ASME Relief Valve



GC1007

### Installation Example

Installed in Washington, this HD601 gas compressor is being used to transfer liquid carbon dioxide. After all the liquid is transferred, the 4-way valve position is reversed to allow the remaining vapors to be recovered. An electric 4-way valve actuator is used to allow remote operation of the system. Both pressure switches and the 4-way valve actuator have NEMA 4 enclosures.