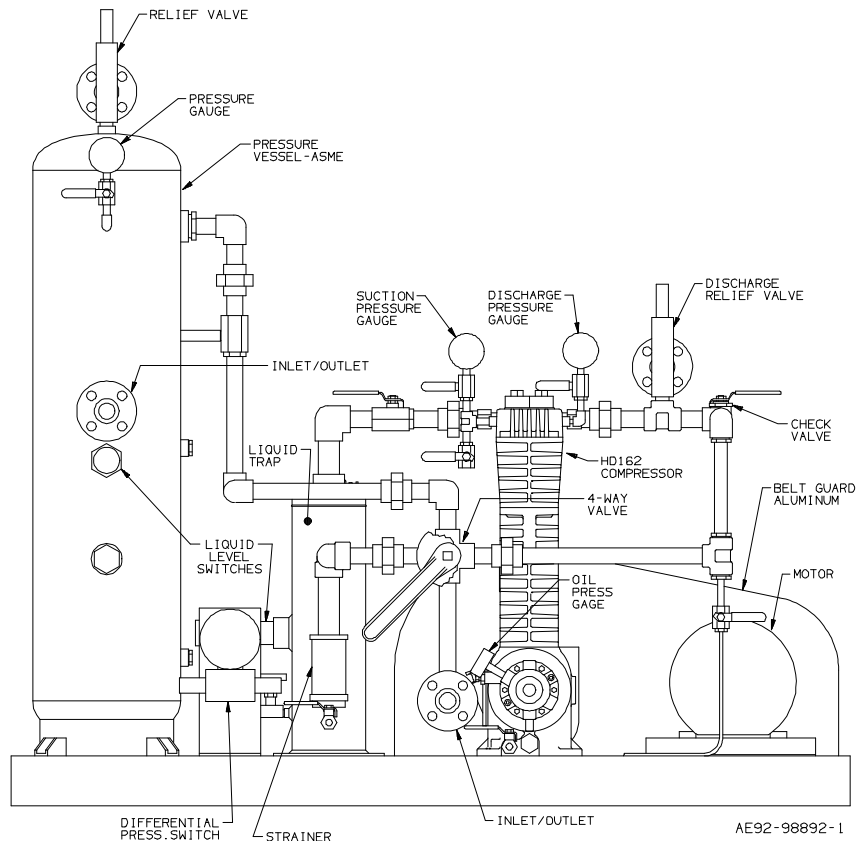


## COMPRESSOR SOLUTIONS

**HD162-LUZ**  
LPG Vapor Recovery  
Compressor  
Driven @ 360 RPM

**GAS:** Propane & Butane  
 $n = 1.07$   
MW = 57.0



**INLET:** 44 - 85 PSIG (3.0 - 5.9 BAR-G), Ambient Temperature

**OUTLET:** 57 - 170 PSIG (3.9 - 12 BAR-G)

### COMPRESSOR CONSTRUCTION

PTFE/Nickel Treated  
Valves

Buna-N O-rings

Ductile Iron  
Head and Cylinder

### ACCESSORIES

3 HP EXP Motor  
V-belt Drive  
Mechanical Liquid Trap  
ASME Code Liquid Trap

ASME Code Relief Valves  
Interconnecting Piping  
4-Way Valve  
Differential Pressure Switch

Flanged Connections  
Liquid Level Switches  
Check Valve  
Aluminum Beltguard

This HD162-LUZ compressor package is being used in China to recover LPG vapors. A differential pressure switch signals the end of the vapor recovery process. The larger ASME code liquid trap includes a stainless steel mist pad, drain valve, and ASME relief valve. The other is a mechanical liquid trap with internal float and drain valve. Liquid level switches signal high liquid level in either liquid trap. Isolation valves are provided on the pressure gauges, pressure switch, ASME liquid trap, and the compressor to eliminate the need to vent the entire system if one component should need service. The motor and all switches are explosion proof. The aluminum belt guard eliminates the possibility of sparking between the flywheel and guard.