

## LB942A-LW

**LB Series**  
**LPG Unloading Compressor**  
 driven @ 700 RPM

### Gas

Propane  
 $n = 1.13$ . MW = 44.09  
 Butane  
 $n = 1.09$  MW = 58.12

### Inlet

15 -215 psia at 20 - 110°F  
 (1.1 – 15.1 kg/cm<sup>2</sup> at -7 - 43°C)

### Outlet

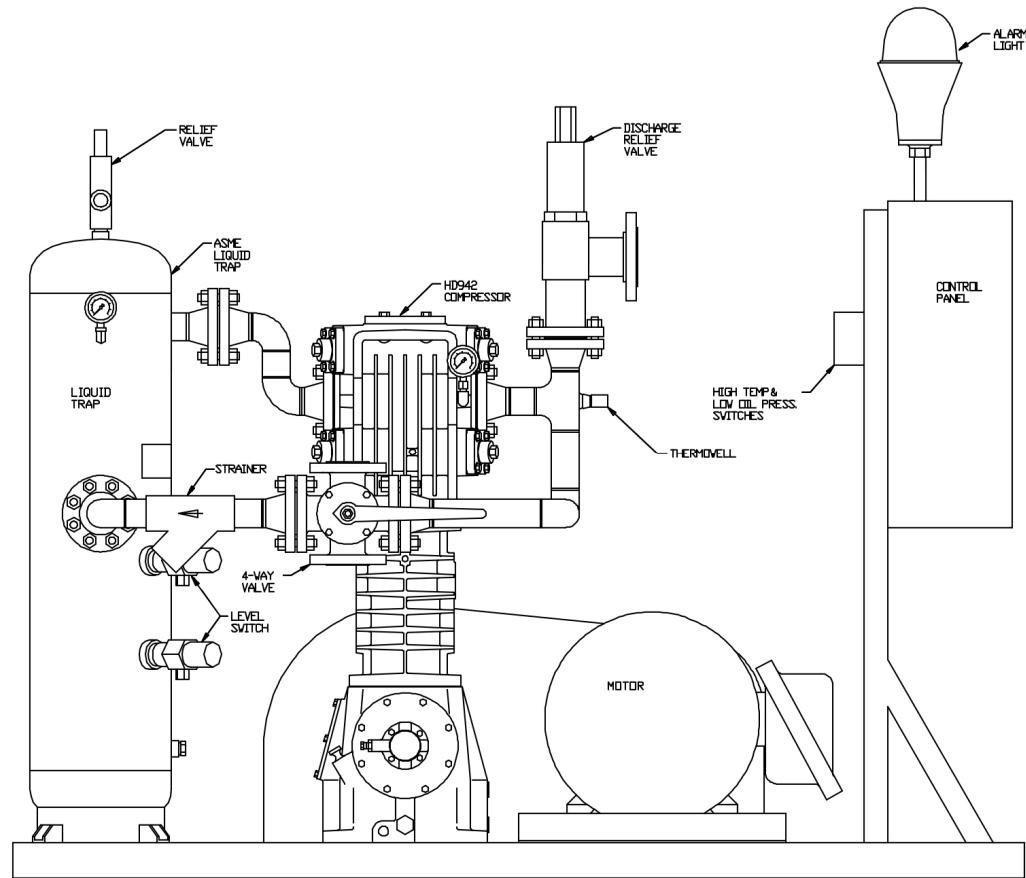
25– 245 psia  
 (1.8 – 17.2 kg/cm<sup>2</sup>a)

### Compressor Construction

Ductile Iron  
 Buna-N O-Rings

### Accessories

Starter/Control Panel  
 Pressure Gauges  
 Relief Valves  
 4-Way Flow Valve  
 ASME Code Liquid Trap  
 Suction Strainer  
 Liquid Level Switches  
 Low Oil Pressure Switch  
 40 HP Star-Delta Start 50 Hz Motor  
 High Temperature Switch



AE93-99789

### Installation Example

Four of these gas compressor units are used in Morocco to transfer LPG at up to 600 gpm (2,270 L/min). A 4-way flow control valve allows vapors to be recovered after all the liquid has been transferred. The liquid trap, which prevents entry of liquid into the compressor, includes two electrical float switches to monitor the liquid level in the trap to protect the compressor in the event of abnormal operation. An inlet strainer stops foreign material from entering the compressor while relief valves prevent excessive pressures. The motor, control panel, alarm light and switches are all explosion proof.