

HD942-TW

HD Series

Natural Gas and Propane
Recovery Compressor driven
@ 655 RPM

Gas

Propane
n = 1.13 MW = 44.09
Natural Gas
n = 1.27 MW = 18.8

Inlet

20 – 90 psia
(1.4 – 6.3 kg/cm²a)
Ambient Temperatures

Outlet

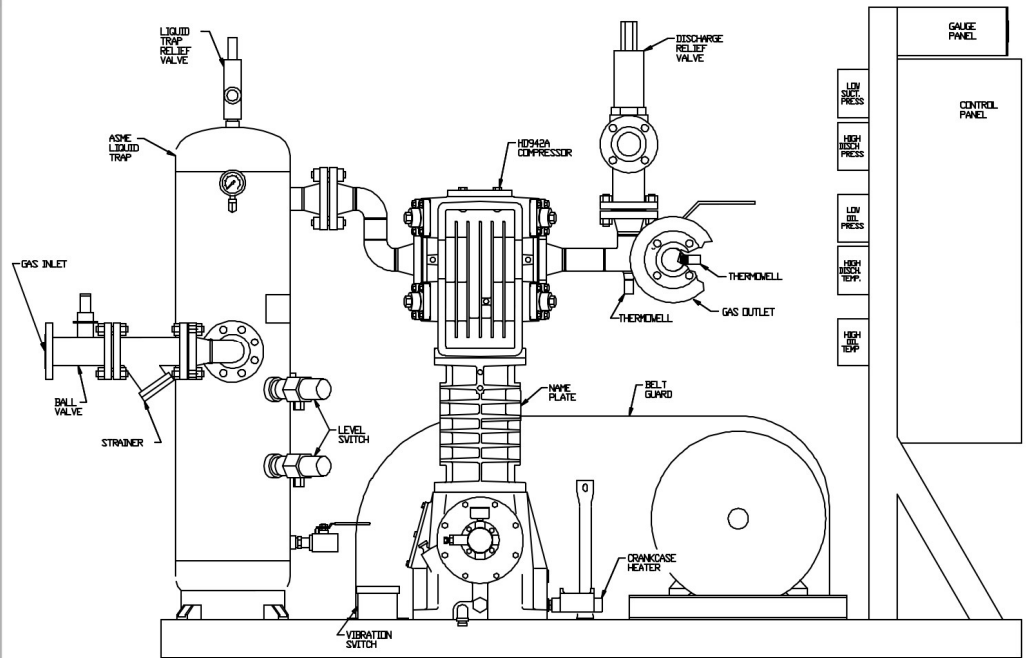
95 - 165 psia
(6.7 – 11.6 kg/cm²a)

Compressor Construction

Stainless Steel Valves

Accessories

Suction Strainer
ASME Code Liquid Trap
Oil Pressure Switch
High Vibration Switch
Crankcase Oil Heater
Trap and Discharge Relief Valves
40 HP, 60 Hz Explosion Proof Motor
Two High Liquid Level Switches
Pressure and Temperature Gauges
Low Suction Pressure Switch
High Discharge Temperature Switch
Starter/Control Panel
Shutoff Ball Valves
Discharge Check Valve



Installation Example

Two model HD942-TW compressors are being used in Pennsylvania to recover natural gas from 30,000 gal. (115 m³) vessels when refilling them with propane. Pressure, Temperature, Liquid Level and Vibration switches monitor almost every aspect of the compressors' operation. Crankcase Oil Heaters ensure proper lubrication year around, and the control panel features fail safe circuits. The Discharge Check Valve, and Shutoff Ball Valves allow the compressor to be easily isolated from the rest of the system as needed.