

HD362-B

**HD Series
Nitrogen Booster Compressor
driven @ 353 or 705 RPM**

Gas

Nitrogen
n = 1.40
MW = 28.01

Inlet

50 psia
(3.5 kg/cm²a)
100°F (38°C)

Outlet

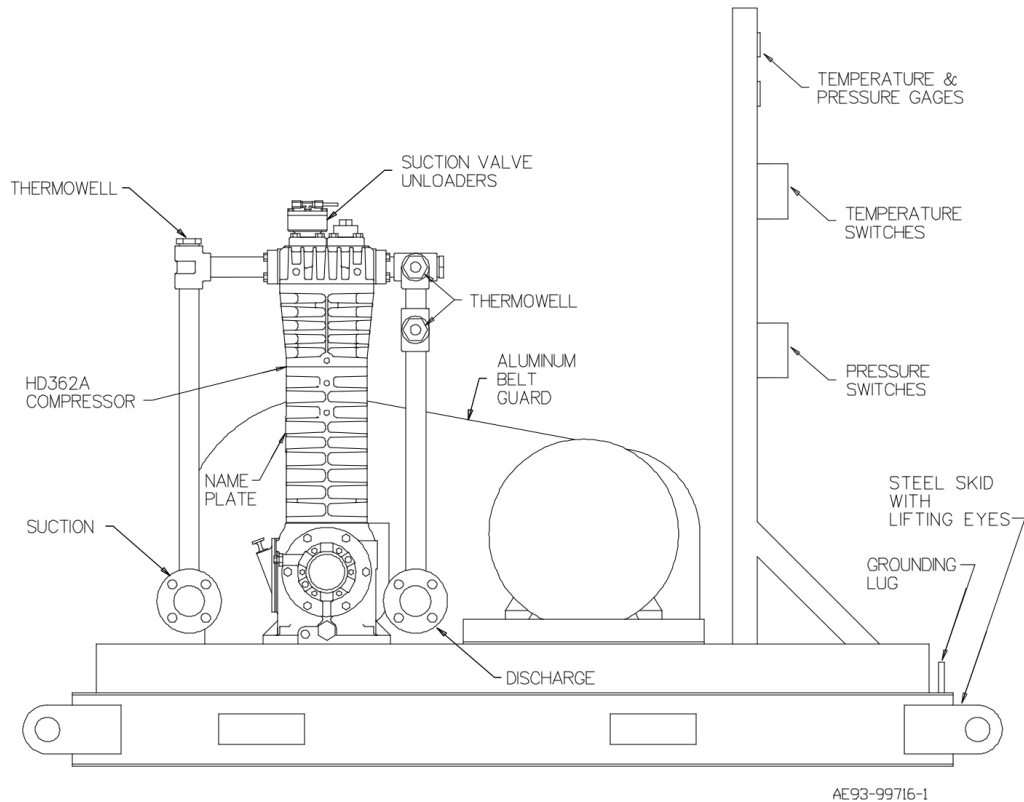
140 - 165 psia
(9.8 – 11.6 kg/cm²a)

Compressor Construction

TNT-12 PTFE/Nickel Treated Cylinder
Poly Filled Piston Rings
Stainless Steel Suction Valve Unloaders

Accessories

Stainless Steel Beltguard
Two Speed Motor
Low Oil Pressure Switch
Flanged Connections
Structural Steel Skid
Temperature Switches
External Oil Filter
Control Pressure Switch
Temperature Gauges



Installation Example

This HD362 supplies nitrogen to a petrochemical process in West Virginia. To meet a very occasional demand for twice the normal nitrogen capacity, a two-speed motor was specified. Nitrogen is a very dry gas with no lubrication qualities, so the TNT-12 treated cylinder and Poly Filled Piston Rings were chosen to maximize piston ring life.