

LB361-LU

LB Series

LPG Liquid Transfer and Vapor Recovery Units driven @ 725 RPM

Gas

Propane
 $n = 1.13$
 $MW = 44.1$

Inlet

40 – 200 psig
 (2.8 – 14.1 kg/cm²g)
 Ambient Temperature

Outlet

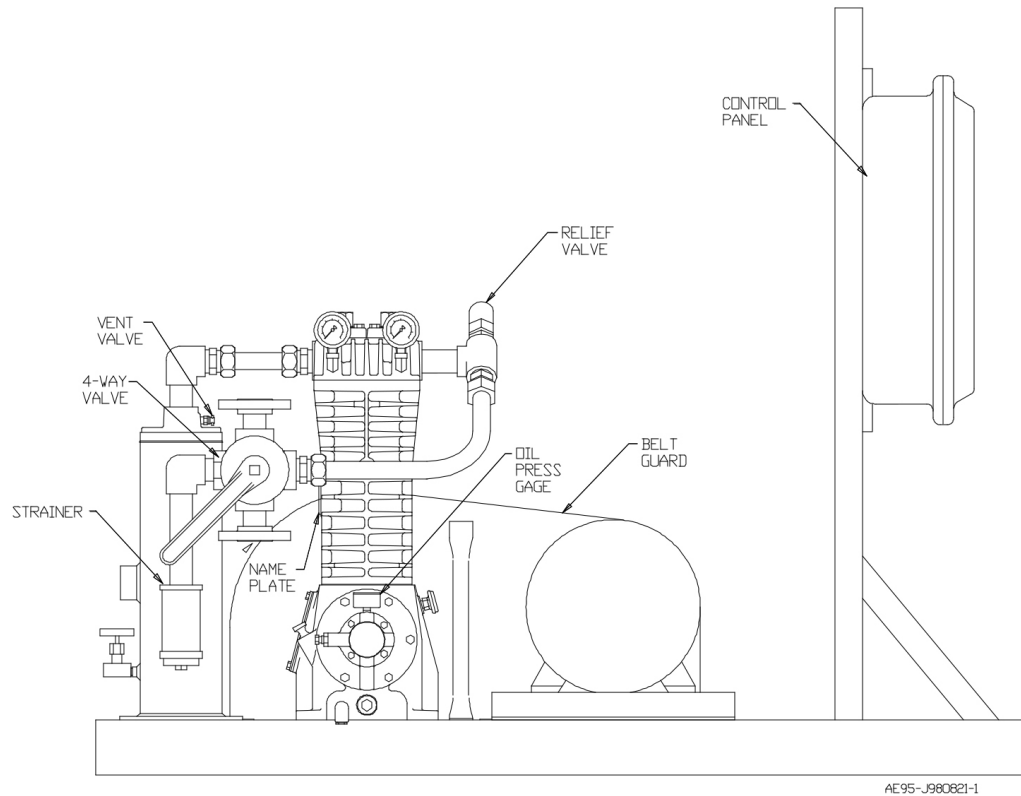
60 - 230 psig
 (4.2 – 16.2 kg/cm²g)

Compressor Construction

Buna-N O-Rings
 Aluminum Gaskets

Accessories

15 HP Motor
 Liquid Trap with Mechanical Float
 Suction Strainer
 4-Way Flow Control Valve Discharge relief valve
 Pressure Gauges for suction and discharge gas pressures and crankcase oil pressure
 All electrical devices are explosion proof and are for 50 Hz operation.



Installation Example

Two of these LB361-LU units are being used to transfer Propane from rail tank car to storage in Shanghai, China. Very similar units have also been recently sent to Chile and Saudi Arabia. These are typical Propane transfer compressors with both a liquid trap and a 4-way flow control valve. The trap prevents entry of liquid into the compressor while the strainer prevents entry of foreign material. After all the liquid is transferred out of the rail car, the 4-way valve is reversed so that the remaining liquid heel and vapors can also be recovered.