

## NG942A-CO

**NG Series  
Compressor Package for  
Natural Gas Boosting  
Engine driven  
Gas**

Well Head Natural Gas  
n = 1.26  
MW = 16.04

### Inlet

50 psig  
(3.5 kg/cm<sup>2</sup> g)  
-45F to 90° F (-43C to 32C)

### Outlet

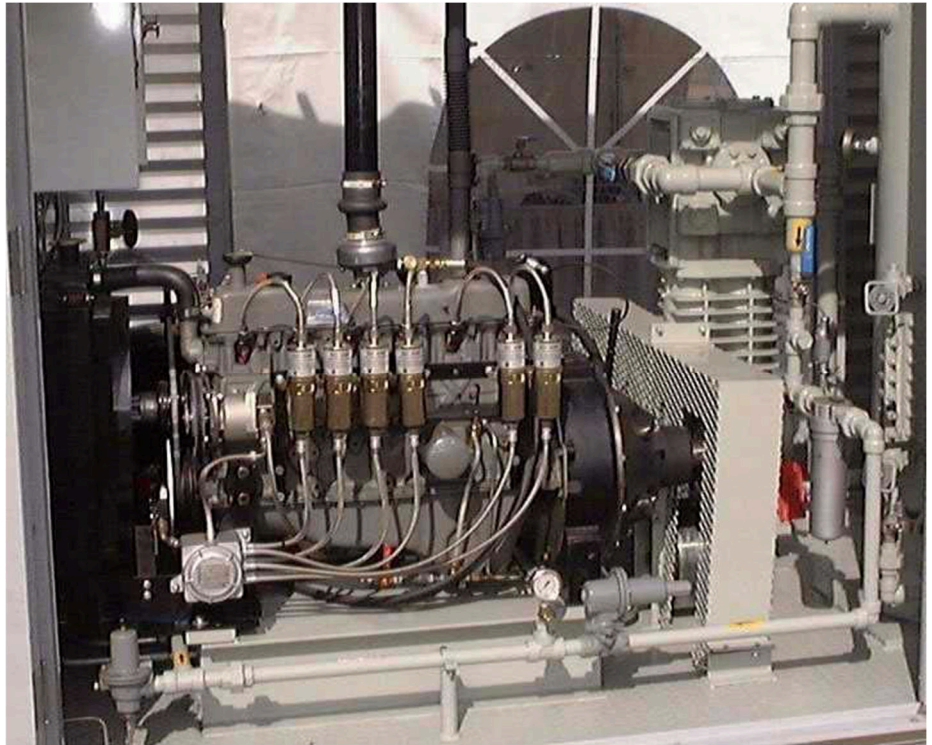
200 psig  
(14.1 kg/cm<sup>2</sup> g)

### Compressor Construction

Air Cooled single stage ANSI  
flanged Construction  
Buna-N O-rings  
Ductile Iron Head and Cylinder

### Accessories

Ford 300 Engine  
ASME Code Liquid Trap  
Liquid Level Controls and Pressure  
Safety Valves  
Safety Switches and Controls for  
unattended fully automated operation  
Fully enclosed Building  
Access doors on both sides  
Explosion proof building heater



### Installation Example

This NG942 is being used in Western Alberta, Canada to boost gas pressure from two gas wells at 500MCFD. The compressor features two sets of rod seals on each piston rod separated by a distance piece to minimize leakage and product contamination. The Package is fully instrumented and automated for unattended operation.