

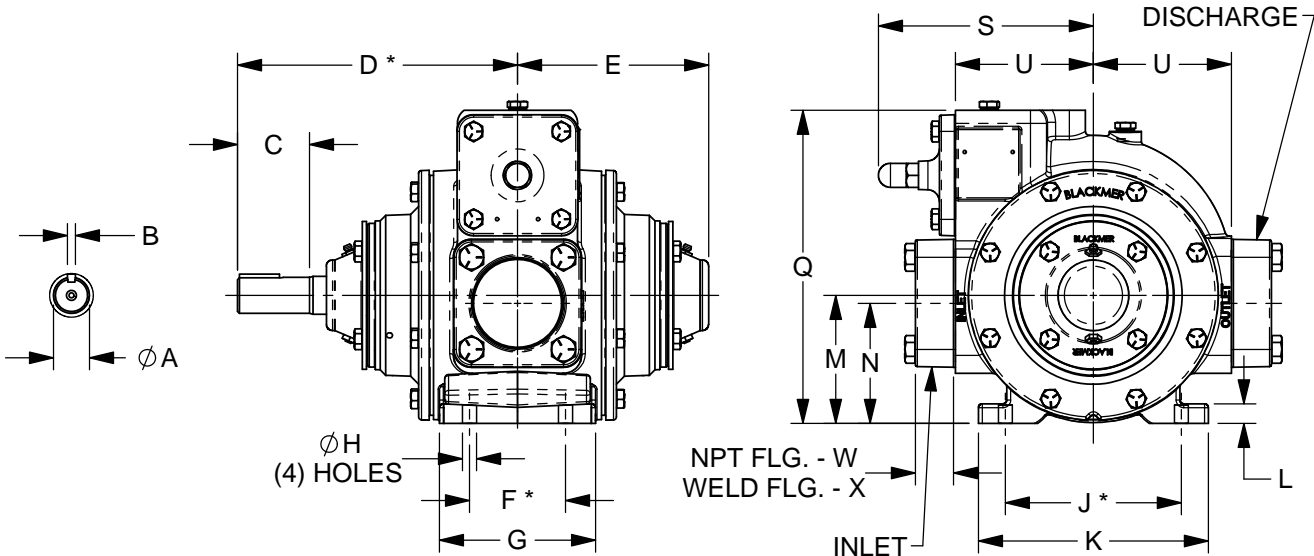


TYPE	SIZE	UNIT STYLE	DIMENSIONS 101-120	
XH	2.5B	PO	Section	101
			Effective	SEPTEMBER 2023
			Replaces	OCTOBER 2015
			Page 1 / 8	

RIGHT HAND ROTATION. FOR LEFT HAND ROTATION, SHAFT PROJECTION IS OPPOSITE THAT SHOWN.

*TOLERANCE $\pm 1/8"$

TOLERANCE ON OTHER DIMENSIONS $\pm 1/4"$



NOTE: FOR ANSI AND DIN FLANGE DIMENSIONS, SEE DIMENSION SHEET 101-113.

DIMENSIONS											WEIGHTS	
UNITS	A	B	C	D	E	F	G	H	J	K	UNITS	PUMP ONLY
IN	1 1/8	1/4	2 1/4	8 3/4	6	3	4 7/8	7/16	5 1/2	7 3/16	LBS	85
MM	---	---	57,2	222,3	152,4	76,2	123,8	11,1	139,7	182,6	KG	39
	L	M	N	P	Q	R	S	T	U	V		W/ NPT FLANGES
IN	5/8	4	3 3/4	---	9 13/16	---	6 13/16	---	4 5/16	---	LBS	91
MM	15,9	101,6	95,3	---	249,2	---	173	---	109,5	---	KG	41
	W	X	Y	Z	AA	BB	CC	DD	EE	FF		W/ WELD FLANGES
IN	1 3/16	1 1/4	---	---	---	---	---	---	---	---	LBS	90
MM	30,2	31,8	---	---	---	---	---	---	---	---	KG	41
	GG	HH	JJ	KK	LL	MM						W/ ANSI FLANGES
IN	---	---	---	---	---	---					LBS	115
MM	---	---	---	---	---	---					KG	52



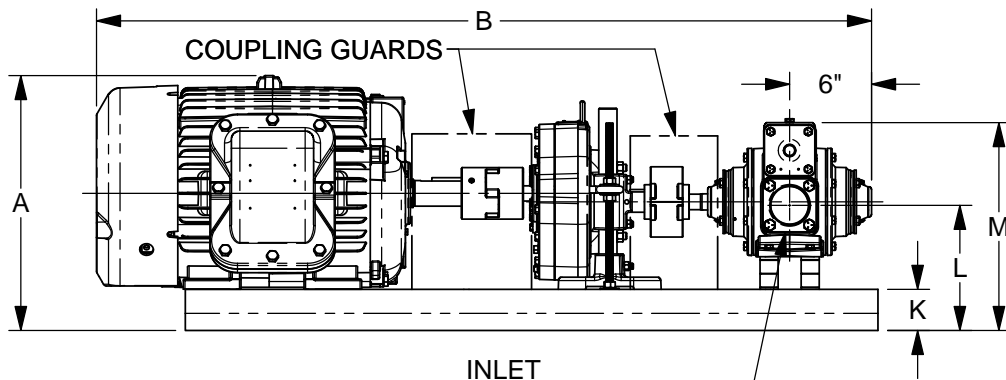
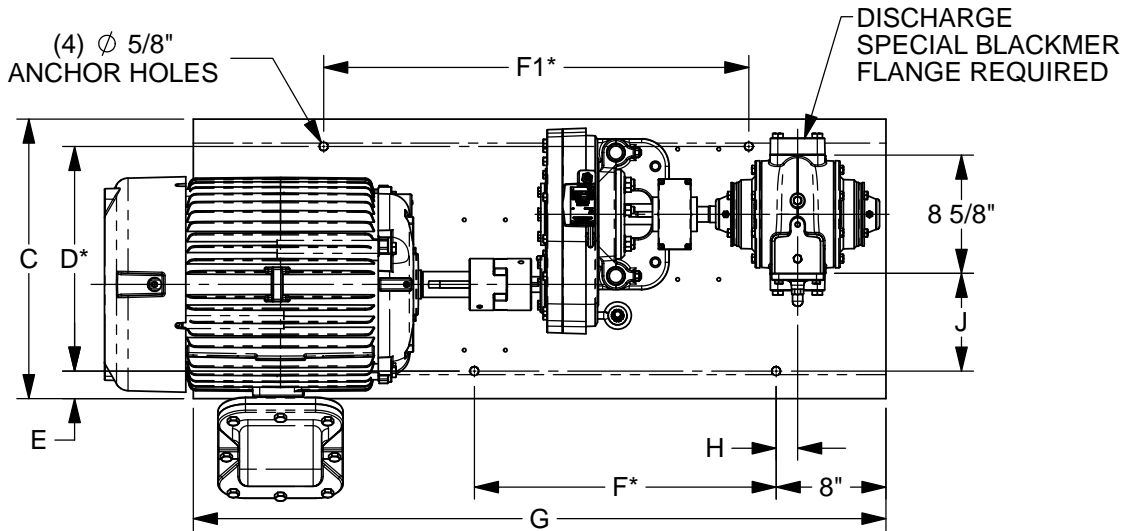
TYPE	SIZE	UNIT STYLE
XH	2.5B	HRB

DIMENSIONS 101-120	
Section Effective	101
Replaces	SEPTEMBER 2023
Page 7 / 8	OCTOBER 2015

RIGHT HAND ROTATION SHOWN.

*TOLERANCE $\pm 1/8"$

TOLERANCE ON OTHER DIMENSIONS $\pm 1/4"$



UNIT DIMENSIONS LESS FLANGES

"A" DIMENSION LESS MOTOR EYEBOLT

FLANGE HT. 2 1/2" NPT - 1 3/16
2 1/2" WELD - 1 1/4

MOTOR			BASE NO.	DIMENSIONS													APPROX. UNIT WT. - POUNDS	
FRAME SIZE	H.P.	RPM		A	B	C	D	E	F	F1	G	H	J	K	L	M	LESS MOTOR	INCL MOTOR
182T	3	1800	901772	11 13/16	43 1/2	17 1/4	14	1 5/8	15	26	44	1 1/2	5 5/16	2 1/4	8 3/8	14 9/16	358	478
184T	5	1800	901772	11 13/16	43 1/2	17 1/4	14	1 5/8	15	26	44	1 1/2	5 5/16	2 1/4	8 3/8	14 9/16	358	485
213T	7 1/2	1800	901772	13 3/8	47 7/16	17 1/4	14	1 5/8	15	26	44	1 1/2	5 5/16	2 1/4	8 3/8	14 9/16	358	590
215T	10	1800	901772	13 3/8	47 7/16	17 1/4	14	1 5/8	15	26	44	1 1/2	5 5/16	2 1/4	8 3/8	14 9/16	358	608
254T	15	1800	901773	17 1/16	51 5/8	20 3/8	16 3/8	2	22	33	50 1/2	1 9/16	7 1/8	3	9 1/8	15 3/16	443	763
256T	20	1800	901773	17 1/16	53 3/8	20 3/8	16 3/8	2	22	33	50 1/2	1 9/16	7 1/8	3	9 1/8	15 3/16	443	806
284T	25	1800	901773	18 5/8	55	20 3/8	16 3/8	2	22	33	50 1/2	1 9/16	7 1/8	3	9 1/8	15 3/16	443	885
286T	30	1800	901773	18 9/16	56 1/2	20 3/8	16 3/8	2	22	33	50 1/2	1 9/16	7 1/8	3	9 1/8	15 3/16	443	953



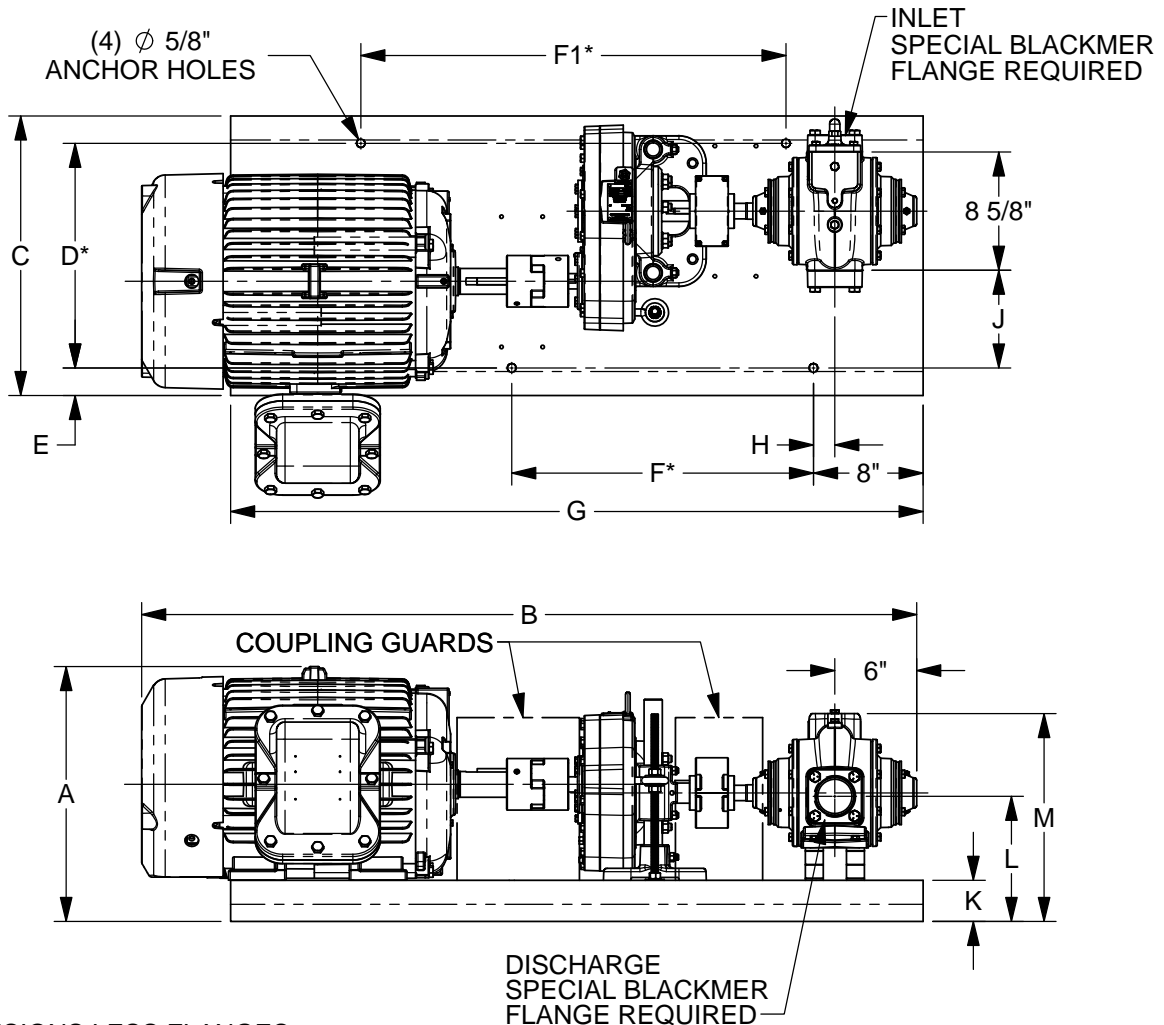
TYPE	SIZE	UNIT STYLE
XH	2.5B	HRB

DIMENSIONS 101-120	
Section Effective	101
Replaces	SEPTEMBER 2023
Page 8 / 8	OCTOBER 2015

LEFT HAND ROTATION SHOWN.

*TOLERANCE $\pm 1/8$ "

TOLERANCE ON OTHER DIMENSIONS $\pm 1/4$ "



UNIT DIMENSIONS LESS FLANGES

"A" DIMENSION LESS MOTOR EYEBOLT

FLANGE HT. 2 1/2" NPT - 1 3/16
2 1/2" WELD - 1 1/4

MOTOR			BASE NO.	DIMENSIONS													APPROX. UNIT WT. - POUNDS	
FRAME SIZE	H.P.	RPM		A	B	C	D	E	F	F1	G	H	J	K	L	M	LESS MOTOR	INCL MOTOR
182T	3	1800	901772	11 13/16	43 1/2	17 1/4	14	1 5/8	15	26	44	1 1/2	5 5/16	2 1/4	8 3/8	14 9/16	358	478
184T	5	1800	901772	11 13/16	43 1/2	17 1/4	14	1 5/8	15	26	44	1 1/2	5 5/16	2 1/4	8 3/8	14 9/16	358	485
213T	7 1/2	1800	901772	13 3/8	47 7/16	17 1/4	14	1 5/8	15	26	44	1 1/2	5 5/16	2 1/4	8 3/8	14 9/16	358	590
215T	10	1800	901772	13 3/8	47 7/16	17 1/4	14	1 5/8	15	26	44	1 1/2	5 5/16	2 1/4	8 3/8	14 9/16	358	608
254T	15	1800	901773	17 1/16	51 5/8	20 3/8	16 3/8	2	22	33	50 1/2	1 9/16	7 1/8	3	9 1/8	15 3/16	443	763
256T	20	1800	901773	17 1/16	53 3/8	20 3/8	16 3/8	2	22	33	50 1/2	1 9/16	7 1/8	3	9 1/8	15 3/16	443	806
284T	25	1800	901773	18 5/8	55	20 3/8	16 3/8	2	22	33	50 1/2	1 9/16	7 1/8	3	9 1/8	15 3/16	443	885
286T	30	1800	901773	18 9/16	56 1/2	20 3/8	16 3/8	2	22	33	50 1/2	1 9/16	7 1/8	3	9 1/8	15 3/16	443	953