

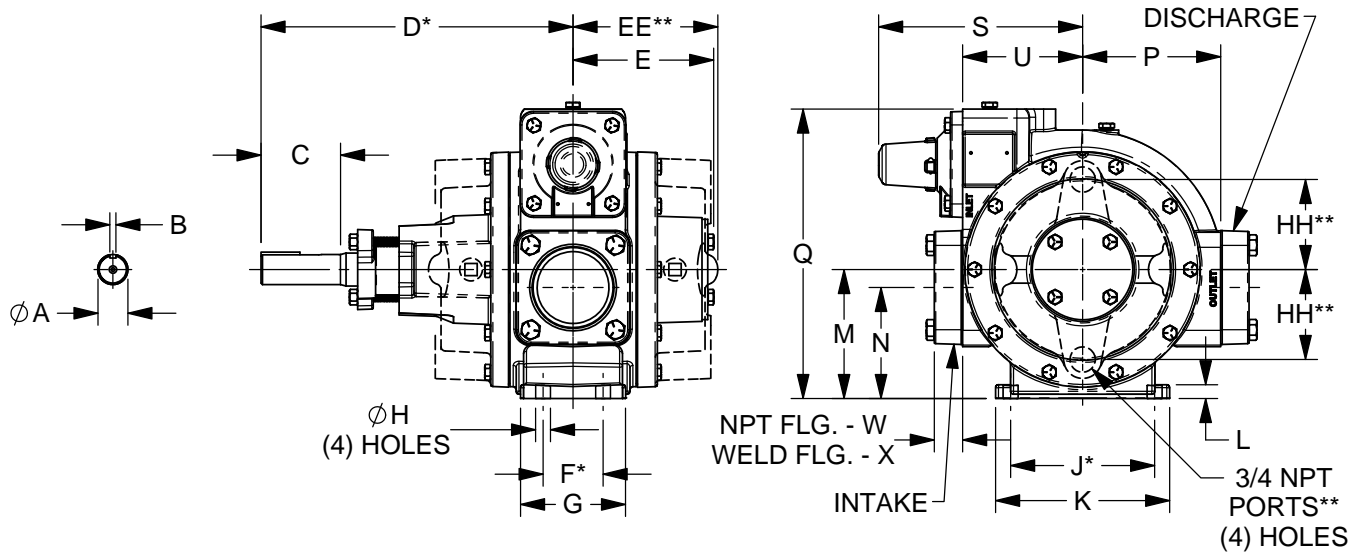


TYPE	SIZE	UNIT STYLE	DIMENSIONS 103-110	
	NPH	3	PO	Section Effective Replaces Page 1 / 7
			103	OCTOBER 2023 OCTOBER 2015

RIGHT HAND ROTATION SHOWN. FOR LEFT HAND ROTATION, SHAFT PROJECTION IS OPPOSITE OF VIEW SHOWN.

*TOLERANCE $\pm 1/8"$

TOLERANCE ON OTHER DIMENSIONS $\pm 1/4"$



** OPTIONAL STEAM JACKET ONLY

"Q" DIMENSION LESS PUMP EYEBOLT

NOTE: FOR ANSI FLANGE DIMENSIONS, SEE DIMENSIONS SHEET 103-115.

DIMENSIONS											WEIGHTS		
UNITS	A	B	C	D	E	F	G	H	J	K	UNITS	PUMP ONLY	PUMP W/ JACKETED HEADS
IN	1 1/4	1/4	3 5/16	13	5 7/8	2 1/2	4 3/8	5/8	6	7 1/4	LBS	131	145
MM	---	---	84,1	330,2	149,2	63,5	111,1	15,9	152,4	184,2	KG	60	66
	L	M	N	P	Q	R	S	T	U	V		NPT FLANGES	NPT FLANGES
IN	1/2	5 3/8	4 5/8	5 3/4	12 1/16	---	8 1/2	---	5	---	LBS	139	153
MM	12,7	136,6	117,5	146,1	306,4	---	215,9	---	127	---	KG	63	69
	W	X	Y	Z	AA	BB	CC	DD	EE	FF		WELD FLANGES	WELD FLANGES
IN	1 1/8	1 1/4	---	---	---	---	---	---	6 1/16	---	LBS	138	152
MM	28,6	31,8	---	---	---	---	---	---	154	---	KG	63	69
	GG	HH	JJ	KK	LL	MM						ANSI FLANGES	ANSI FLANGES
IN	---	3 3/4	---	---	---	---					LBS	162	176
MM	---	92,3	---	---	---	---					KG	73	80

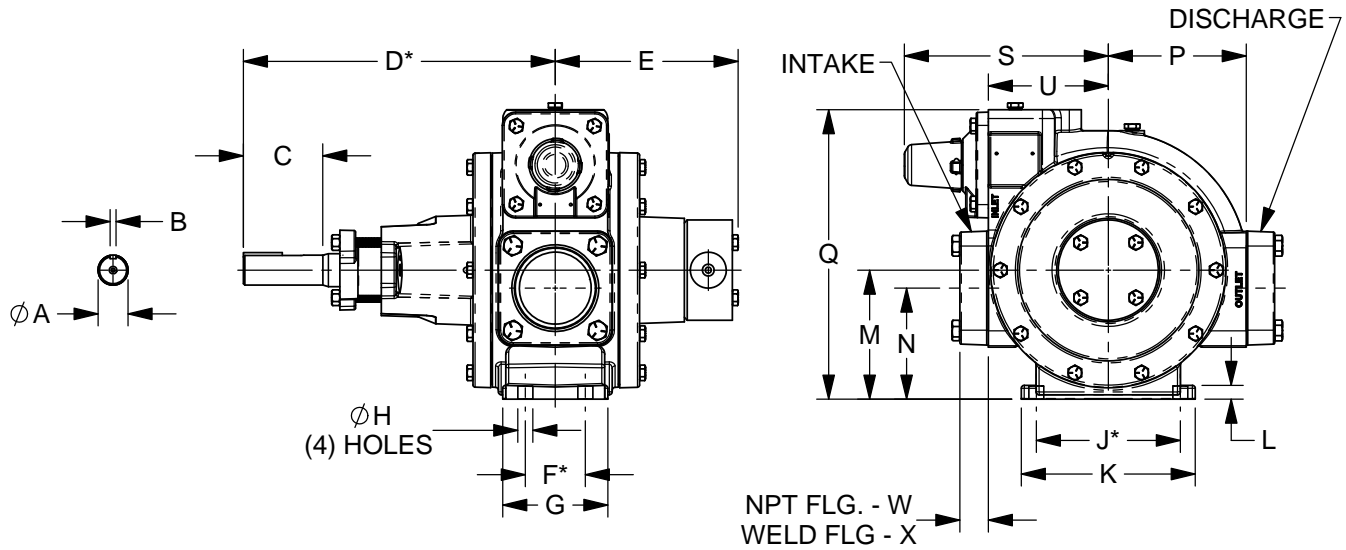


TYPE	SIZE	UNIT STYLE	DIMENSIONS 103-110	
NPH	3	PO	Section Effective Replaces Page 2 / 7	103 OCTOBER 2023 OCTOBER 2015

RIGHT HAND ROTATION SHOWN. FOR LEFT HAND ROTATION, SHAFT PROJECTION IS OPPOSITE OF VIEW SHOWN.

*TOLERANCE $\pm 1/8"$

TOLERANCE ON OTHER DIMENSIONS $\pm 1/4"$



ELECTIC HEATER OPTION SHOWN

"Q" DIMENSION LESS PUMP EYEBOLT

NOTE: FOR ANSI FLANGE DIMENSIONS, SEE DIMENSIONS SHEET 103-115.

DIMENSIONS											WEIGHTS	
UNITS	A	B	C	D	E	F	G	H	J	K	UNITS	PUMP ONLY
IN	1 1/4	1/4	3 5/16	13	7 5/8	2 1/2	4 3/8	5/8	6	7 1/4	LBS	136
MM	---	---	84,1	330,2	155,6	63,5	111,1	15,9	152,4	184,2	KG	62
	L	M	N	P	Q	R	S	T	U	V		W/ NPT FLANGES
IN	1/2	5 3/8	4 5/8	5 3/4	12 1/16	---	8 1/2	---	5	---	LBS	144
MM	12,7	136,6	117,5	146,1	306,4	---	215,9	---	127	---	KG	65
	W	X	Y	Z	AA	BB	CC	DD	EE	FF		W/ WELD FLANGES
IN	---	---	---	---	---	---	---	---	---	---	LBS	143
MM	---	---	---	---	---	---	---	---	---	---	KG	65
	GG	HH	JJ	KK	LL	MM						W/ ANSI FLANGES
IN	---	---	---	---	---	---					LBS	167
MM	---	---	---	---	---	---					KG	76



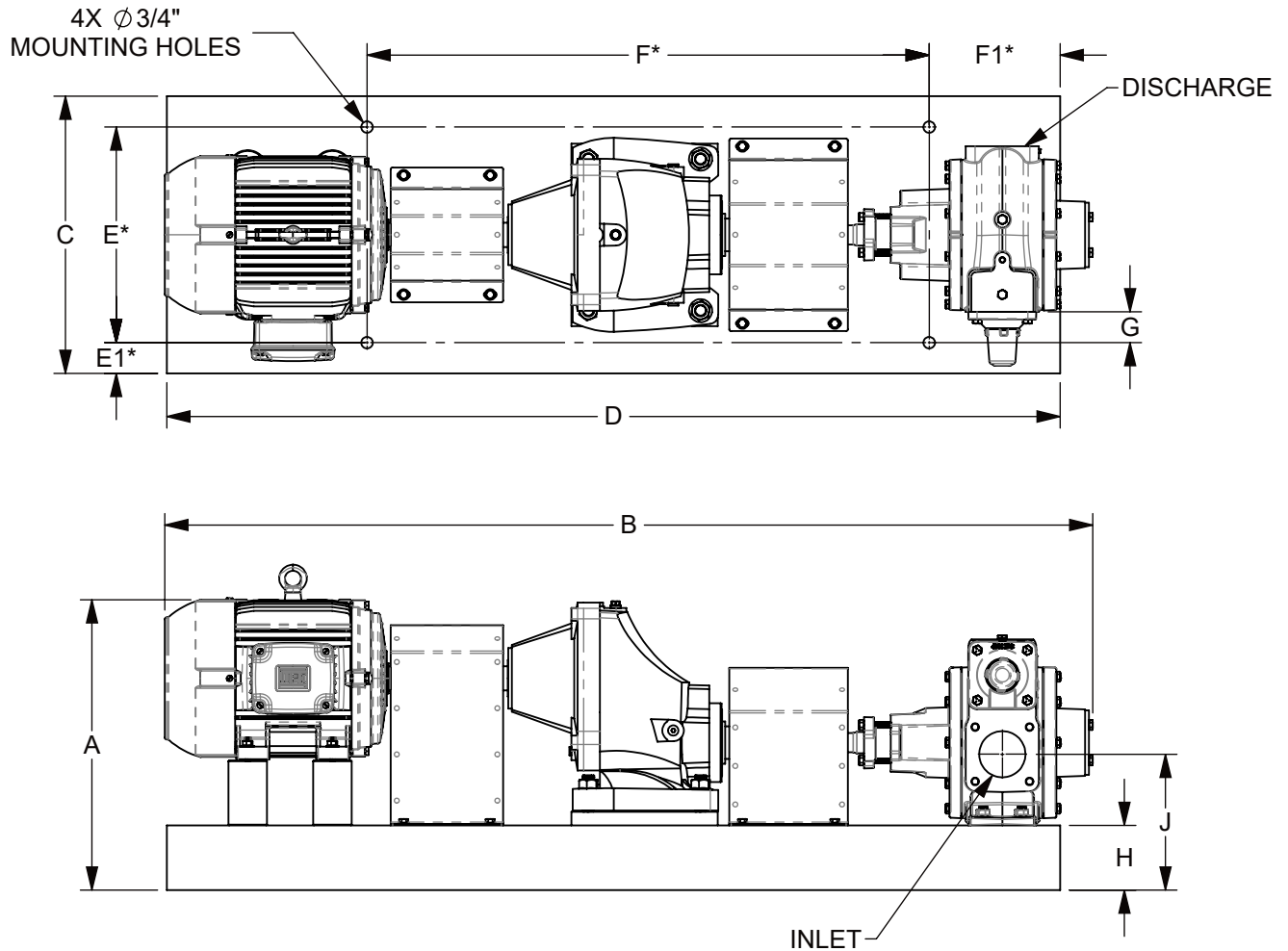
TYPE	SIZE	UNIT STYLE
NP(H)	3F	SK971

DIMENSIONS 103-1110	
Section Effective Replaces Page 3 / 7	103 OCTOBER 2023 NEW

RIGHT HAND ROTATION SHOWN.

*TOLERANCE $\pm 1/8"$

TOLERANCE ON OTHER DIMENSIONS $\pm 1/4"$



"A" DIMENSION LESS MOTOR EYEBOLT

MOTOR			BASE NO.	DIMENSIONS											APPROX. UNIT WT. - POUNDS	
FRAME SIZE	H.P.	RPM		A	B	C	D	E	E1	F	F1	G	H	J	LESS MOTOR	INCL MOTOR
213T	7 1/2	1800	901438	18 7/8	60 1/4	18	58	14	2	36 1/2	8 1/2	2	4 1/4	8 7/8	597	755
215T	10	1800	901438	18 7/8	62	18	58	14	2	36 1/2	8 1/2	2	4 1/4	8 7/8	597	769
254T	15	1800	901446	19 7/8	65 1/2	18	64	14	2	29 1/2	15	2	4 1/4	8 7/8	628	902
256T	20	1800	901446	19 7/8	67 1/4	18	64	14	2	29 1/2	15	2	4 1/4	8 7/8	628	963
284T	25	1800	901450	20 5/8	68 7/8	18	64	14	2	35 1/2	10	2	4 1/4	8 7/8	631	1017
286T	30	1800	901450	20 5/8	70 3/8	18	64	14	2	35 1/2	10	2	4 1/4	8 7/8	631	1072



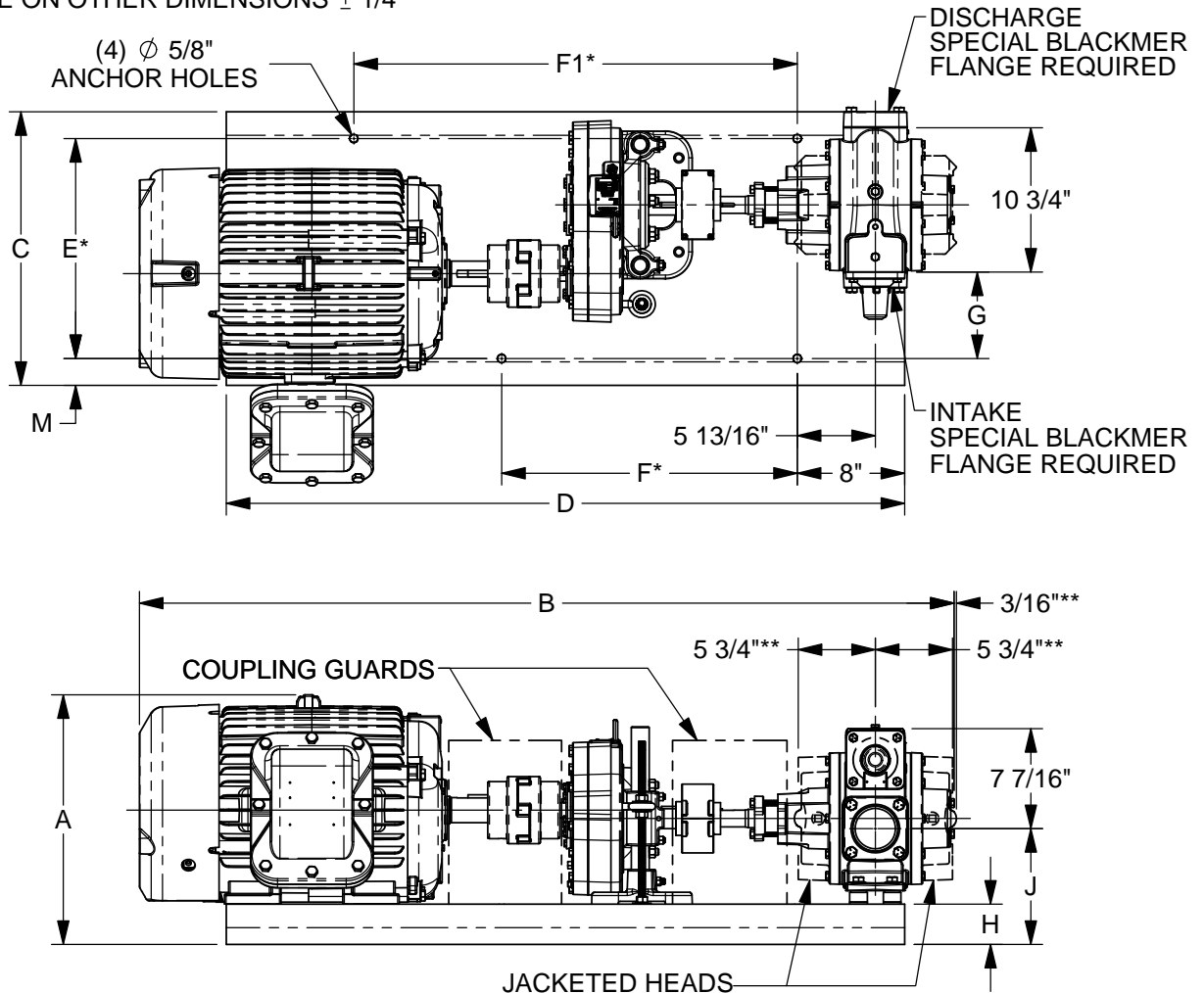
TYPE	SIZE	UNIT STYLE
NPH	3	HRB

DIMENSIONS 103-110	
Section Effective Replaces Page 6 / 7	103 OCTOBER 2023 OCTOBER 2015

RIGHT HAND ROTATION SHOWN.

*TOLERANCE $\pm 1/8"$

TOLERANCE ON OTHER DIMENSIONS $\pm 1/4"$



** OPTIONAL STEAM JACKET ONLY

FLANGE HEIGHT: 3" NPT - 1 1/8
3" WELD - 1 1/4

"A" DIMENSION LESS MOTOR EYEBOLT

MOTOR			BASE NO.	DIMENSIONS											APPROX. UNIT WT. - POUNDS	
FRAME SIZE	H.P.	RPM		A	B	C	D	E	F	F1	G	H	J	M	LESS MOTOR	INCL MOTOR
143T	1	1800	901772	9 11/16	47 1/2	17 1/4	44	14	15	26	4 3/8	2 1/4	7 7/8	1 5/8	405	443
145T	1 1/2 & 2	1800	901772	9 11/16	47 1/2	17 1/4	44	14	15	26	4 3/8	2 1/4	7 7/8	1 5/8	405	466
182T	3	1800	901772	11 13/16	47 7/8	17 1/4	44	14	15	26	4 3/8	2 1/4	7 7/8	1 5/8	405	525
184T	5	1800	901772	11 13/16	47 7/8	17 1/4	44	14	15	26	4 3/8	2 1/4	7 7/8	1 5/8	405	532
213T	7 1/2	1800	901772	13 3/8	51 5/8	17 1/4	44	14	15	26	4 3/8	2 1/4	7 7/8	1 5/8	415	637
215T	10	1800	901772	13 3/8	51 5/8	17 1/4	44	14	15	26	4 3/8	2 1/4	7 7/8	1 5/8	415	655
254T	15	1800	901773	17 1/16	57 3/8	20 3/8	50 1/2	16 3/8	22	33	6 7/16	3	8 5/8	2	490	810
256T	20	1800	901773	17 1/16	57 3/8	20 3/8	50 1/2	16 3/8	22	33	6 7/16	3	8 5/8	2	490	853
284T	25	1800	901773	18 5/8	60 1/2	20 3/8	50 1/2	16 3/8	22	33	6 7/16	3	8 5/8	2	531	963
286T	30	1800	901773	18 5/8	60 1/2	20 3/8	50 1/2	16 3/8	22	33	6 7/16	3	8 5/8	2	531	1031



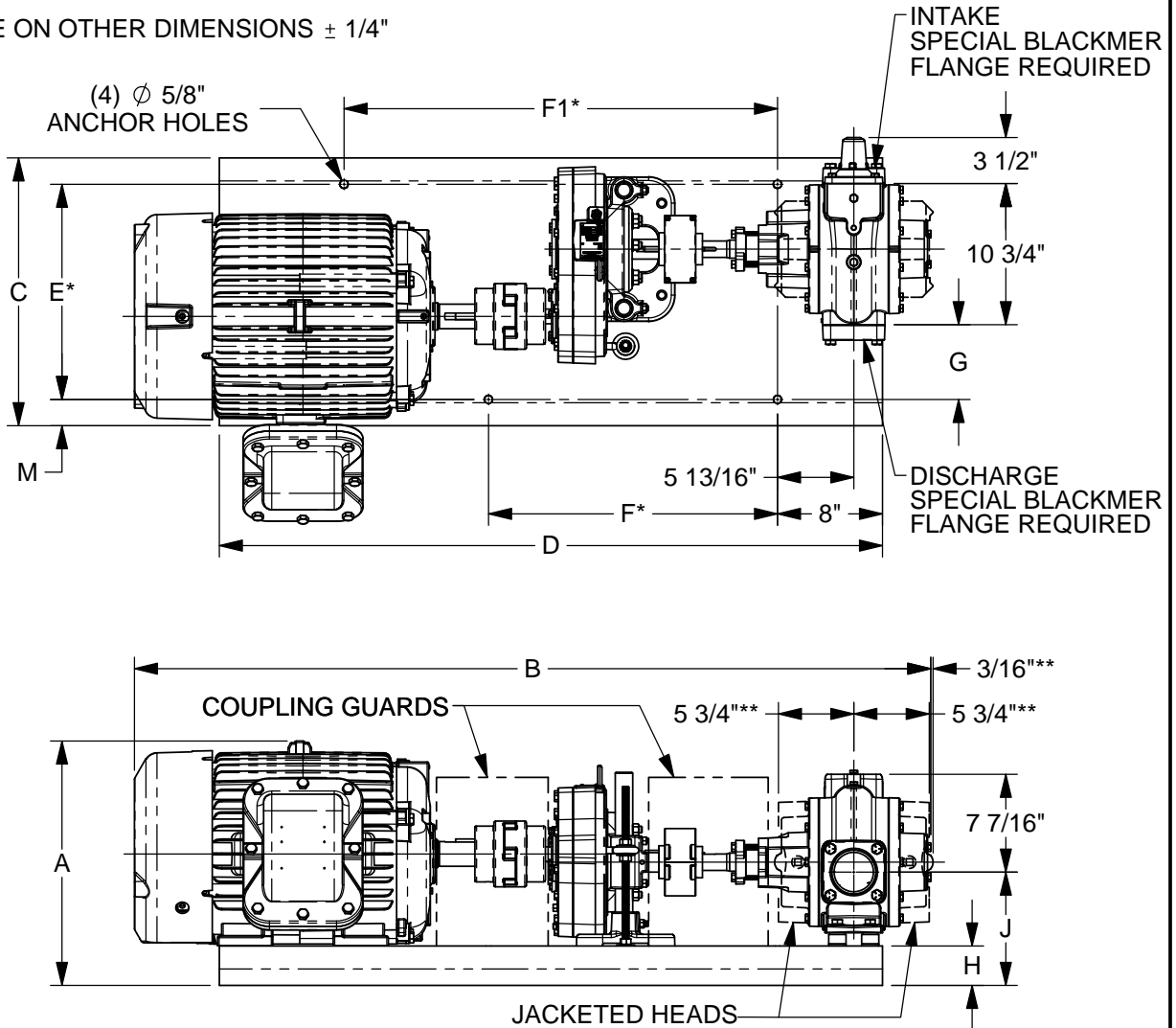
TYPE	SIZE	UNIT STYLE
NPH	3	HRB

DIMENSIONS 103-110	
Section Effective Replaces Page 7 / 7	103 OCTOBER 2023 OCTOBER 2015

LEFT HAND ROTATION SHOWN.

*TOLERANCE $\pm 1/8$ "

TOLERANCE ON OTHER DIMENSIONS $\pm 1/4$ "



** OPTIONAL STEAM JACKET ONLY

"A" DIMENSION LESS MOTOR EYEBOLT

FLANGE HEIGHT: 3" NPT - 1 1/8
3" WELD - 1 1/4

MOTOR			BASE NO.	DIMENSIONS											APPROX. UNIT WT. - POUNDS	
FRAME SIZE	H.P.	RPM		A	B	C	D	E	F	F1	G	H	J	M	LESS MOTOR	INCL MOTOR
143T	1	1800	901772	9 11/16	47 1/2	17 1/4	44	14	15	26	3 5/8	2 1/4	7 7/8	1 5/8	405	443
145T	1 1/2 & 2	1800	901772	9 11/16	47 1/2	17 1/4	44	14	15	26	3 5/8	2 1/4	7 7/8	1 5/8	405	466
182T	3	1800	901772	11 13/16	47 7/8	17 1/4	44	14	15	26	3 5/8	2 1/4	7 7/8	1 5/8	405	525
184T	5	1800	901772	11 13/16	47 7/8	17 1/4	44	14	15	26	3 5/8	2 1/4	7 7/8	1 5/8	405	532
213T	7 1/2	1800	901772	13 3/8	51 5/8	17 1/4	44	14	15	26	3 5/8	2 1/4	7 7/8	1 5/8	415	637
215T	10	1800	901772	13 3/8	51 5/8	17 1/4	44	14	15	26	3 5/8	2 1/4	7 7/8	1 5/8	415	655
254T	15	1800	901773	17 1/16	57 3/8	20 3/8	50 1/2	16 3/8	22	33	5 11/16	3	8 5/8	2	490	810
256T	20	1800	901773	17 1/16	57 3/8	20 3/8	50 1/2	16 3/8	22	33	5 11/16	3	8 5/8	2	490	853
284T	25	1800	901773	18 5/8	60 1/2	20 3/8	50 1/2	16 3/8	22	33	5 11/16	3	8 5/8	2	531	963
286T	30	1800	901773	18 5/8	60 1/2	20 3/8	50 1/2	16 3/8	22	33	5 11/16	3	8 5/8	2	531	1031