

DIMENSIONS 104-103

Section 104
 Effective SEP 2023
 Replaces JUL 2003
 Pg 4/5

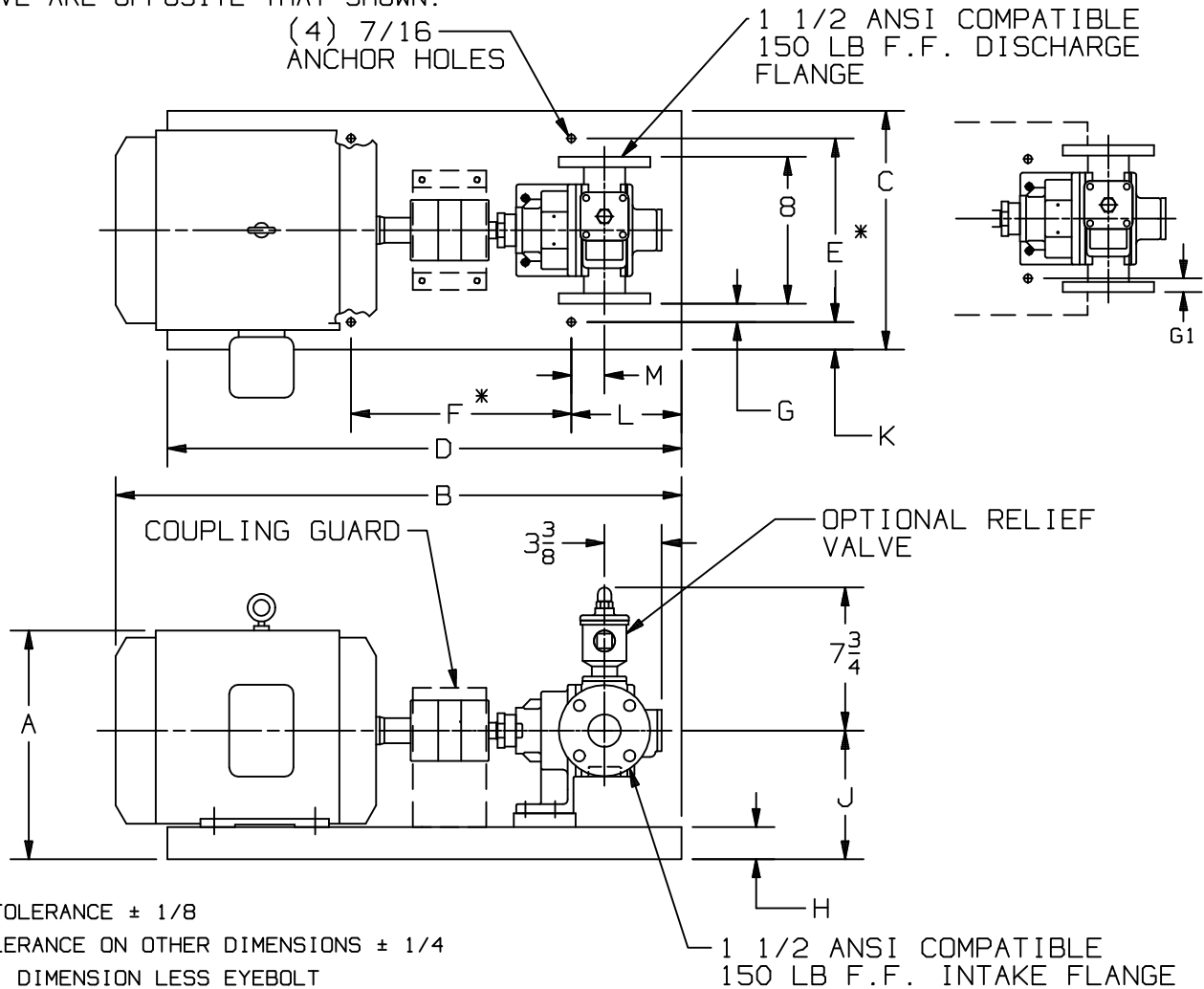
TYPE
 SNP - SNPJ

SIZE
 1.25
 1.5

UNIT
 STYLE
 DM



RIGHT HAND ROTATION. FOR LEFT HAND ROTATION, INTAKE, DISCHARGE, AND RELIEF VALVE ARE OPPOSITE THAT SHOWN.



* TOLERANCE ± 1/8
 TOLERANCE ON OTHER DIMENSIONS ± 1/4
 "A" DIMENSION LESS EYEBOLT

| FRAME SIZE | MOTOR | | BASE NO. | DIMENSIONS | | | | | | | | APPROX. UNIT WT. - POUNDS | | |
|------------|-------|--|----------|------------|--------|--------|-------|-------|-------|---|-----|---------------------------|------------|-------------|
| | | | | A | B | C | D | E | F | G | G1 | H | LESS MOTOR | INCL. MOTOR |
| 143T | | | 901707 | 10 | 26 7/8 | 8 | 18 | 6 | 6 3/4 | - | 1 | 1 1/2 | 55 | 95 |
| 145T | | | 901707 | 10 | 27 3/4 | 8 | 18 | 6 | 6 3/4 | - | 1 | 1 1/2 | 55 | 100 |
| 182T | | | 901708 | 11 1/8 | 28 1/4 | 10 1/2 | 21 | 6 1/2 | 6 3/4 | - | 3/4 | 1 1/2 | 65 | 155 |
| 184T | | | 901708 | 11 1/8 | 30 | 10 1/2 | 21 | 6 1/2 | 6 3/4 | - | 3/4 | 1 1/2 | 65 | 190 |
| 213T | | | 901709 | 12 7/8 | 32 7/8 | 13 | 28 | 10 | 12 | 1 | - | 1 3/4 | 90 | 225 |
| 215T | | | 901709 | 12 7/8 | 33 5/8 | 13 | 28 | 10 | 12 | 1 | - | 1 3/4 | 90 | 245 |
| | | | | J | K | L | M | | | | | | | |
| 143T | | | 901707 | 6 | 1 | 3 1/4 | 4 3/8 | | | | | | | |
| 145T | | | 901707 | 6 | 1 | 3 1/4 | 4 3/8 | | | | | | | |
| 182T | | | 901708 | 6 | 2 | 3 1/4 | 4 3/8 | | | | | | | |
| 184T | | | 901708 | 6 | 2 | 3 1/4 | 4 3/8 | | | | | | | |
| 213T | | | 901709 | 7 | 1 1/2 | 6 | 1 3/4 | | | | | | | |
| 215T | | | 901709 | 7 | 1 1/2 | 6 | 1 3/4 | | | | | | | |

