





DIMENSIONS 105-105

Section 105  
 Effective SEPTEMBER 2023  
 Replaces SEPTEMBER 1989  
 Page 3 / 6

TYPE

SIZE

UNIT  
 STYLE

XLW

3

HRA

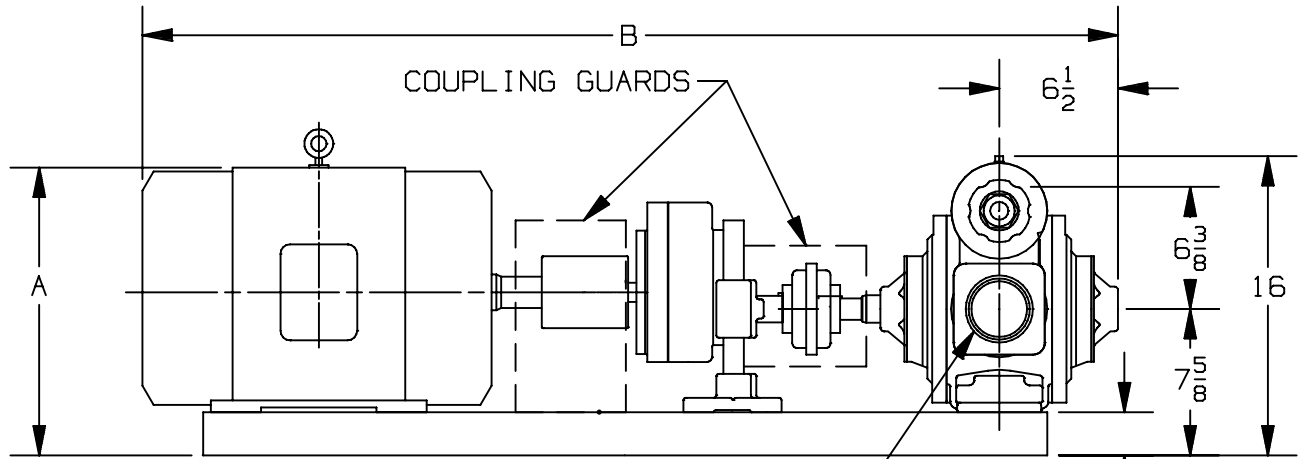
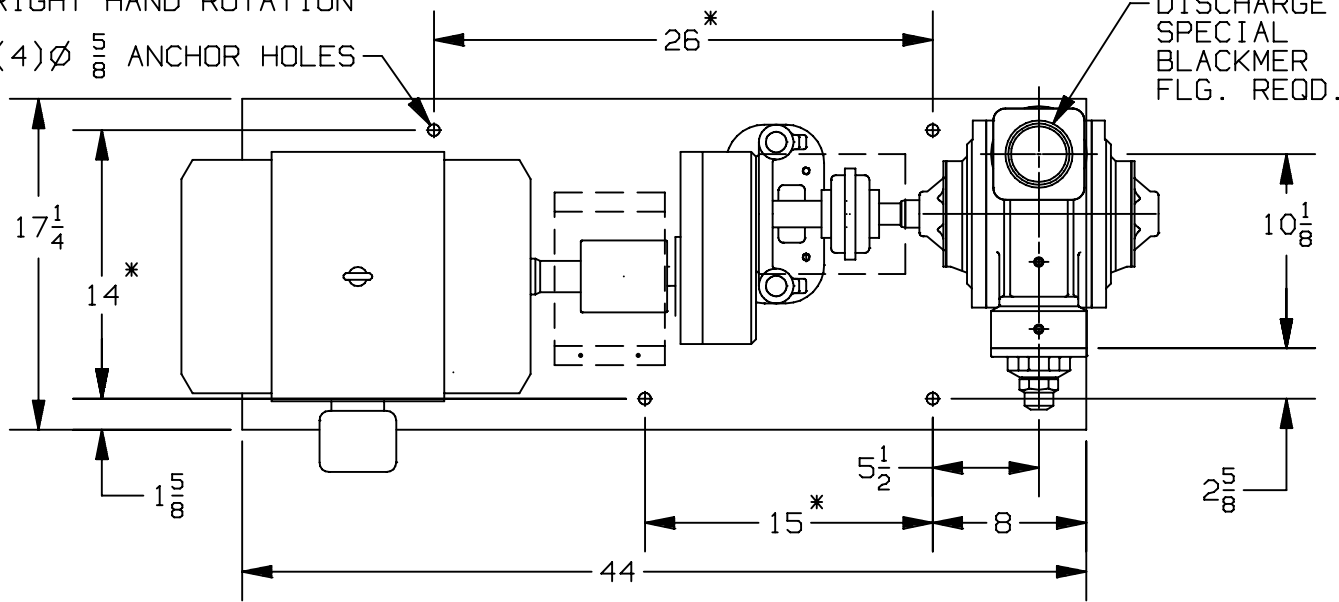


www.blackmer.com

RIGHT HAND ROTATION

(4)  $\varnothing \frac{5}{8}$  ANCHOR HOLES

DISCHARGE  
 SPECIAL  
 BLACKMER  
 FLG. REQD.



INTAKE  
 SPECIAL BLACKMER  
 FLG. REQD

UNIT DIMENSION LESS FLANGES

\* TOLERANCE  $\pm \frac{1}{8}$

TOLERANCE ON OTHER DIMENSIONS  $\pm \frac{1}{4}$

"A" DIMENSION LESS EYEBOLT

FLG. HT: 3" NPT - 1 1/2  
 3" WELD- 1 1/4

MOTOR			BASE NO.	DIMENSIONS		
FRAME SIZE		UNITS		A	B	
182T		901774	IN	11 7/8	48 3/4	
184T		901774	IN	11 7/8	48 3/4	
213T		901774	IN	13 3/8	48 3/4	
215T		901774	IN	13 3/8	49 3/8	
254T		901774	IN	15 5/8	53 1/4	
256T		901774	IN	15 5/8	55	

DIMENSIONS 105-105

Section 105  
 Effective SEPTEMBER 2023  
 Replaces SEPTEMBER 1989  
 Page 4 / 6

TYPE

SIZE

UNIT  
 STYLE

XLW

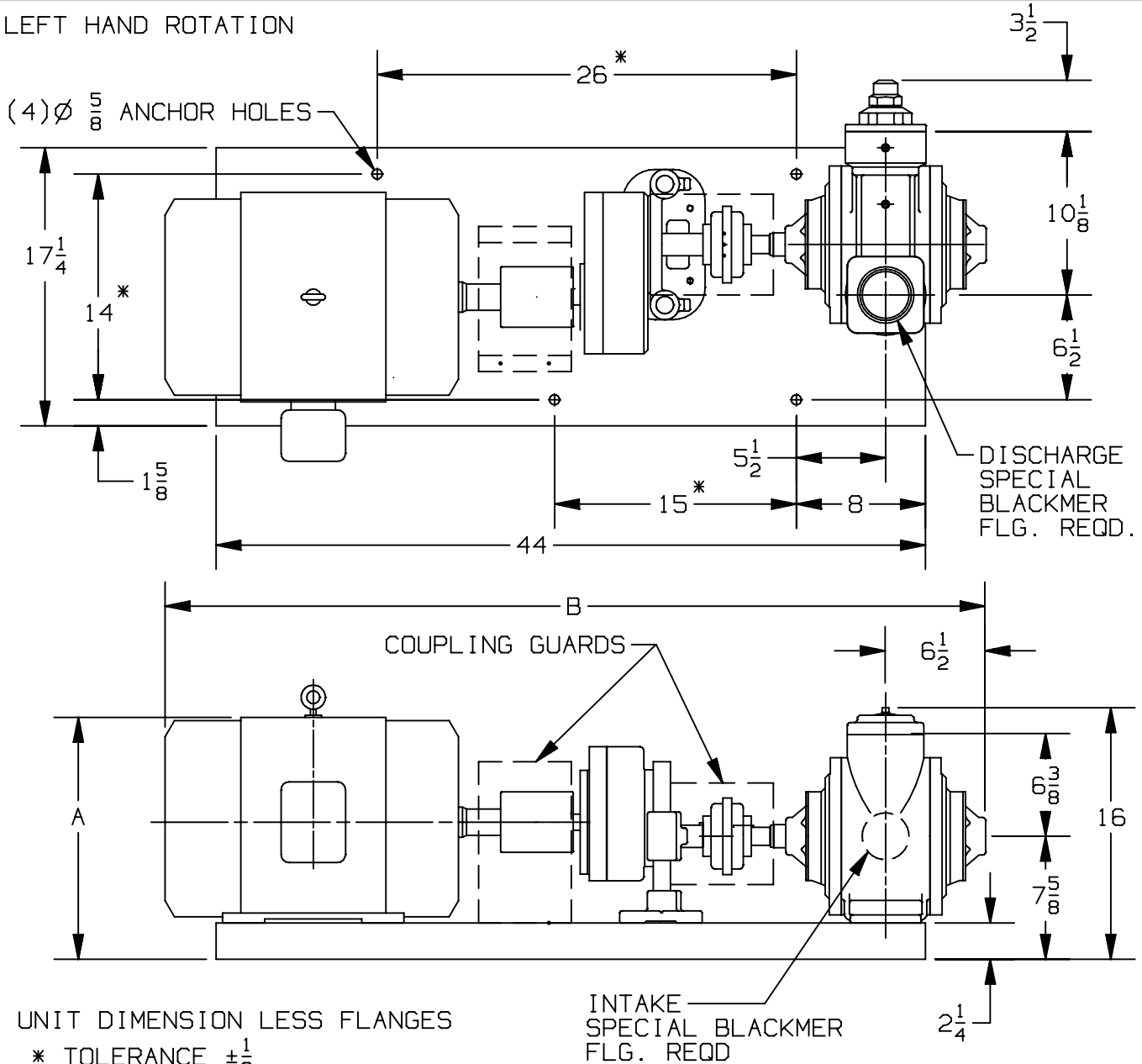
3

HRA

**Blackmer**

www.blackmer.com

LEFT HAND ROTATION



UNIT DIMENSION LESS FLANGES

\* TOLERANCE  $\pm \frac{1}{8}$

TOLERANCE ON OTHER DIMENSIONS  $\pm \frac{1}{4}$

"A" DIMENSION LESS EYEBOLT

FLG. HT: 3" NPT - 1 1/2  
 3" WELD- 1 1/4

MOTOR			DIMENSIONS			
FRAME SIZE		BASE NO.	UNITS	A	B	
182T		901774	IN	11 7/8	48 3/4	
184T		901774	IN	11 7/8	48 3/4	
213T		901774	IN	13 3/8	48 3/4	
215T		901774	IN	13 3/8	49 3/8	
254T		901774	IN	15 5/8	53 1/4	
256T		901774	IN	15 5/8	55	

**DIMENSIONS 105-105**

Section 105  
 Effective SEPTEMBER 2023  
 Replaces SEPTEMBER 1989  
 Page 5 / 6

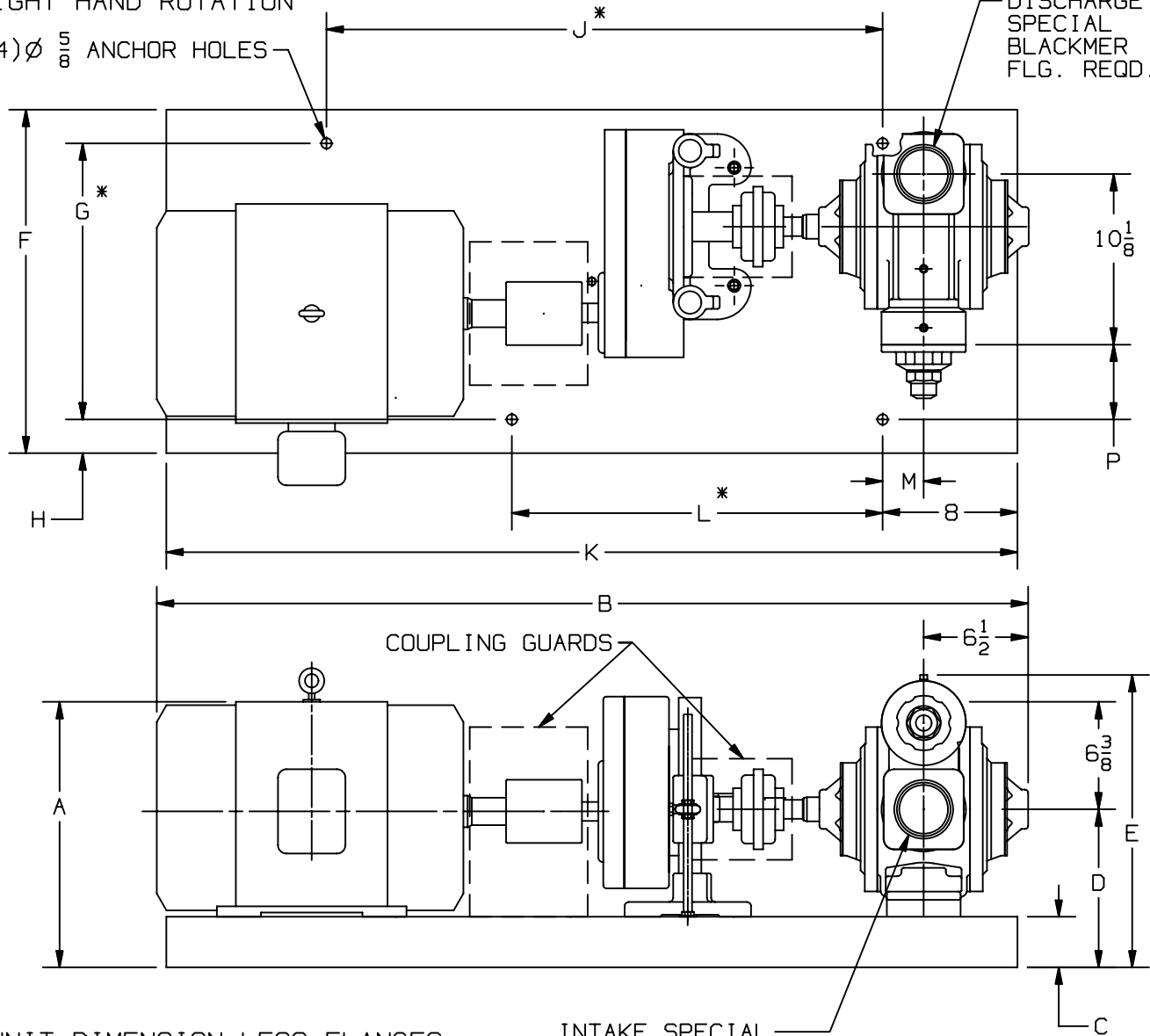
TYPE XLW  
 SIZE 3  
 UNIT STYLE HRB



RIGHT HAND ROTATION

(4)  $\phi \frac{5}{8}$  ANCHOR HOLES

DISCHARGE SPECIAL BLACKMER FLG. REQD.



UNIT DIMENSION LESS FLANGES

\* TOLERANCE  $\pm \frac{1}{8}$

TOLERANCE ON OTHER DIMENSIONS  $\pm \frac{1}{4}$

"A" DIMENSION LESS EYEBOLT

INTAKE SPECIAL BLACKMER FLG. REQD.

FLG. HT: 3" NPT - 1 1/2  
 3" WELD- 1 1/4

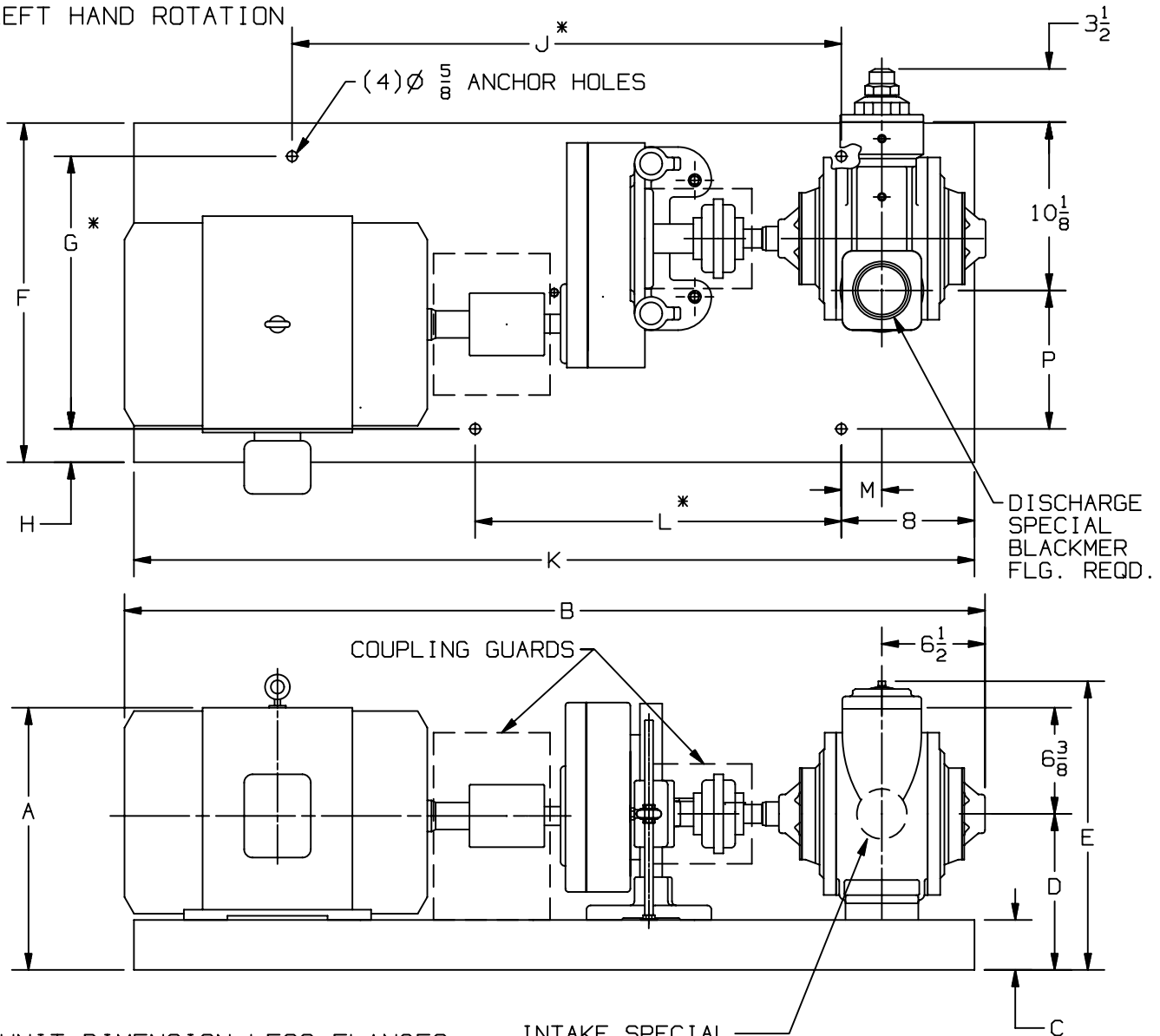
MOTOR			BASE NO.	DIMENSIONS													
FRAME SIZE				UNITS	A	B	C	D	E	F	G	H	J	K	L	M	P
182T			901772	IN	12 <sup>7</sup> / <sub>8</sub>	46 <sup>1</sup> / <sub>8</sub>	2 1/4	8 5/8	17	17 1/4	14	1 5/8	26	44	15	2 3/8	2 5/8
184T			901772	IN	12 <sup>7</sup> / <sub>8</sub>	47 1/2	2 1/4	8 5/8	17	17 1/4	14	1 5/8	26	44	15	2 3/8	2 5/8
213T			901772	IN	13 5/8	49 1/2	2 1/4	8 5/8	17	17 1/4	14	1 5/8	26	44	15	2 3/8	2 5/8
215T			901772	IN	13 5/8	50 1/4	2 1/4	8 5/8	17	17 1/4	14	1 5/8	26	44	15	2 3/8	2 5/8
254T			901773	IN	16 3/8	54	3	9 3/8	17 3/4	20 3/8	16 3/8	2	33	50 1/2	22	2 1/2	4 1/2
256T			901773	IN	16 3/8	55 3/4	3	9 3/8	17 3/4	20 3/8	16 3/8	2	33	50 1/2	22	2 1/2	4 1/2

**DIMENSIONS 105-105**  
 Section 105  
 Effective SEPTEMBER 2023  
 Replaces SEPTEMBER 1989  
 Page 6 / 6

TYPE XLW  
 SIZE 3  
 UNIT STYLE HRB



LEFT HAND ROTATION



UNIT DIMENSION LESS FLANGES

\* TOLERANCE  $\pm \frac{1}{8}$

TOLERANCE ON OTHER DIMENSIONS  $\pm \frac{1}{4}$

"A" DIMENSION LESS EYEBOLT

FLG. HT: 3" NPT - 1 1/2  
 3" WELD- 1 1/4

MOTOR			DIMENSIONS														
FRAME SIZE		BASE NO.	UNITS	A	B	C	D	E	F	G	H	J	K	L	M	P	
182T		901772	IN	12 <sup>7</sup> / <sub>8</sub>	46 <sup>1</sup> / <sub>8</sub>	2 1/4	8 5/8	17	17 1/4	14	1 5/8	26	44	15	2 3/8	6 1/2	
184T		901772	IN	12 <sup>7</sup> / <sub>8</sub>	47 1/2	2 1/4	8 5/8	17	17 1/4	14	1 5/8	26	44	15	2 3/8	6 1/2	
213T		901772	IN	13 <sup>5</sup> / <sub>8</sub>	49 1/2	2 1/4	8 5/8	17	17 1/4	14	1 5/8	26	44	15	2 3/8	6 1/2	
215T		901772	IN	13 <sup>5</sup> / <sub>8</sub>	50 1/4	2 1/4	8 5/8	17	17 1/4	14	1 5/8	26	44	15	2 3/8	6 1/2	
254T		901773	IN	16 <sup>3</sup> / <sub>8</sub>	54	3	9 3/8	17 3/4	20 3/8	16 3/8	2	33	50 1/2	22	2 1/2	8 3/8	
256T		901773	IN	16 <sup>3</sup> / <sub>8</sub>	55 3/4	3	9 3/8	17 3/4	20 3/8	16 3/8	2	33	50 1/2	22	2 1/2	8 3/8	