



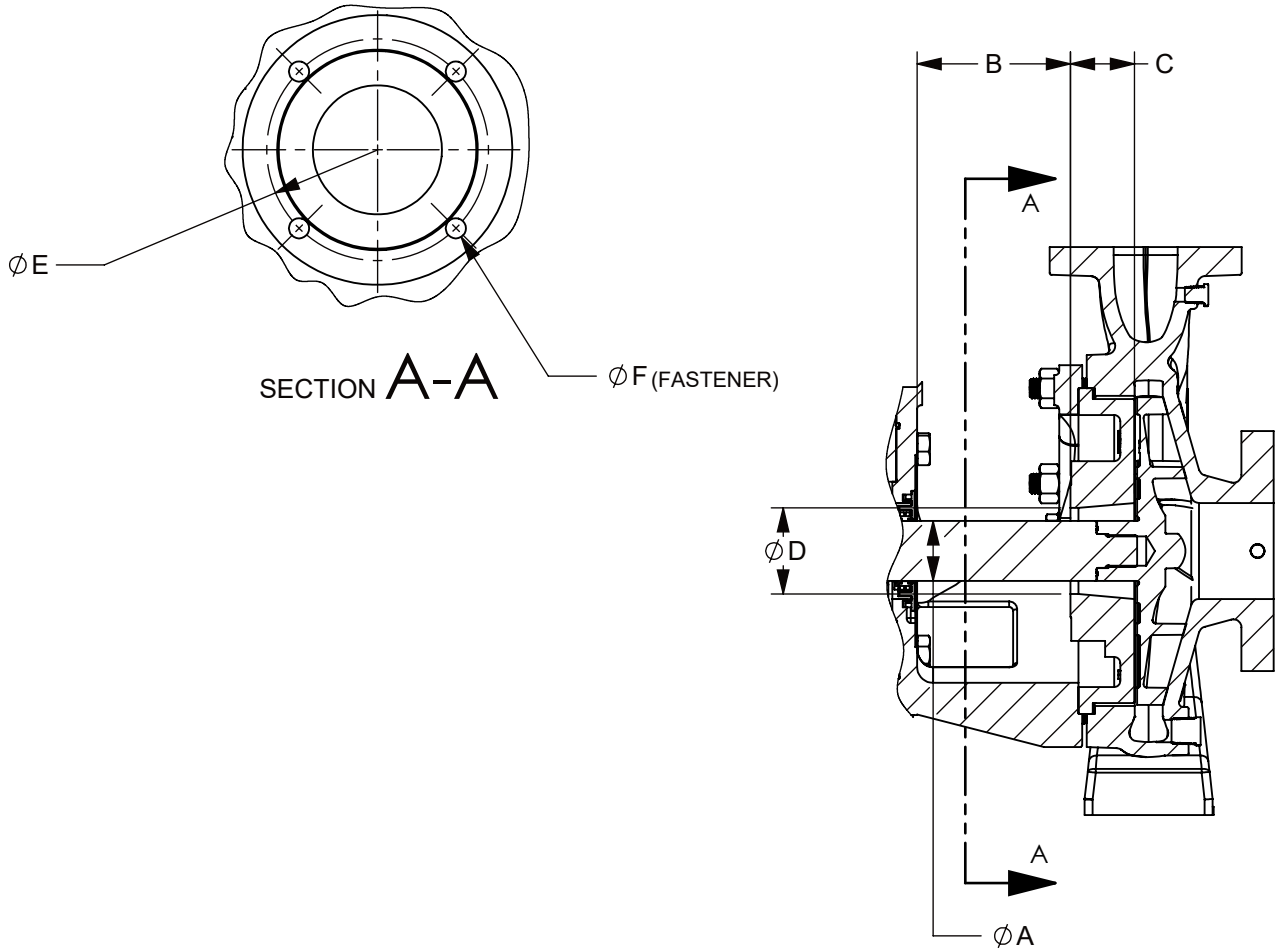
TYPE	SIZE	UNIT STYLE
SEAL AREA DIMENSIONS	SYSTEM ONE	FRAME A, S, SD, M, LD17

DIMENSIONS 1301-101	
Section Effective Replaces Page 1 / 1	1301 5/26/2021 NEW

RIGHT HAND ROTATION SHOWN.

*TOLERANCE $\pm 1/8"$

TOLERANCE ON OTHER DIMENSIONS $\pm 1/4"$



BLACKMER SYSTEM ONE PUMP DIMENSIONS FOR MECHANICAL SEAL INSTALLATION

FRAME SIZE	SEAL CHAMBER ARRANGEMENT	UNITS	SHAFT SIZE ØA	FIRST OBSTRUCTION DISTANCE B	AVAILABLE INBOARD LENGTH C	SEAL CHAMBER BORE ØD	MOUNTING BOLT CIRCLE ØE	MOUNTING BOLT HOLES ØF
SD	BACK COVER/SEAL CHAMBER	IN	1.45	2.205	2.09	2.28	3.74	M10X1.5
		MM	38	56	53	58	95	
S	BACK COVER/SEAL CHAMBER	IN	1.500	2.38	2.21	2.38	3.50	3/8-16
		MM	38.1	60.45	56.13	60.45	88.9	
	BACK COVER/SEAL CHAMBER WITH JACKET	IN	1.500	2.38	2.12	2.30	3.50	
		MM	38.1	60.45	53.85	58.42	88.9	
A	BACK COVER/SEAL CHAMBER	IN	1.875	3.00	2.88	2.69	4.75	1/2-13
		MM	47.625	76.2	73.15	68.33	120.65	
M	BACK COVER/SEAL CHAMBER	IN	2.625	3.13	2.56	3.62	5.75	5/8-11
		MM	66.675	79.50	65.02	91.95	146.05	
	BACK COVER/SEAL CHAMBER WITH TAPER BORE	IN	2.625	3.13	3.56	3.62	5.75	
		MM	66.675	79.50	90.42	91.95	146.05	
LD17	BACK COVER	IN	1.875	2.19	2.00	2.69	4.62	1/2-13
		MM	47.625	55.63	50.8	68.33	117.35	