

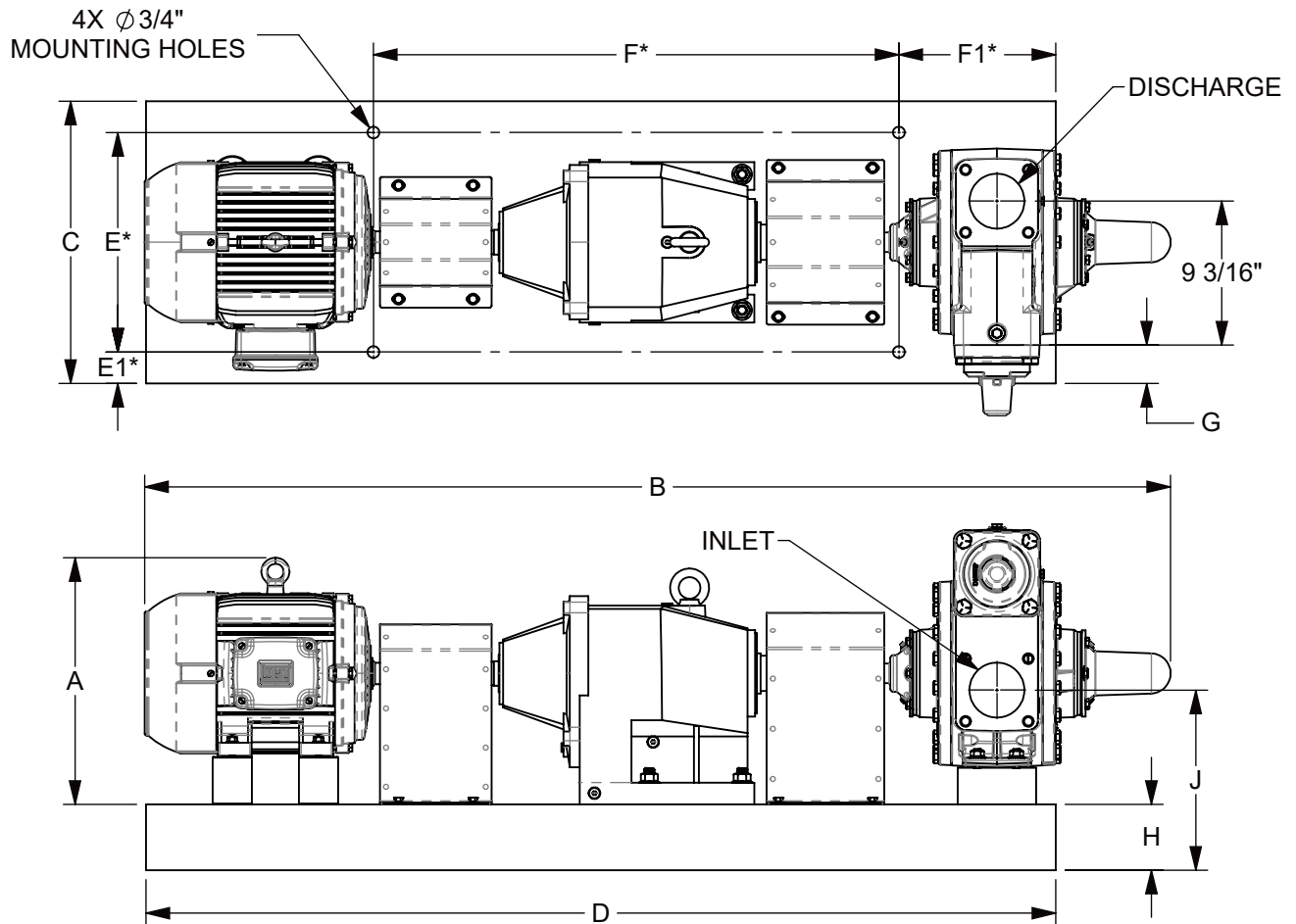


TYPE	SIZE	UNIT STYLE	DIMENSIONS 701-109	
CRL	4	SK52W	Section Effective Replaces Page 2 / 5	701 SEPTEMBER 2023 NEW

RIGHT HAND ROTATION SHOWN.

*TOLERANCE $\pm 1/8$ "

TOLERANCE ON OTHER DIMENSIONS $\pm 1/4$ "



"A" DIMENSION LESS MOTOR EYEBOLT

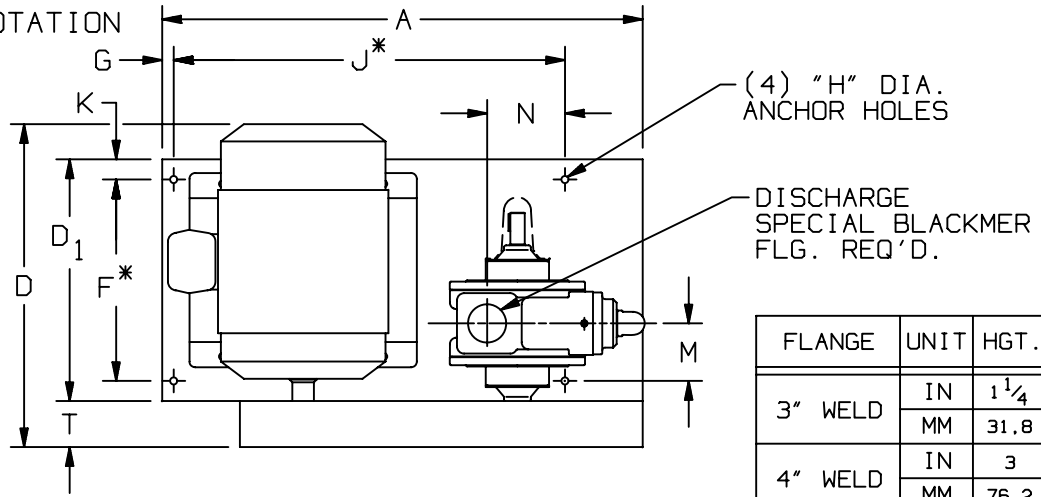
MOTOR			BASE NO.	DIMENSIONS											APPROX. UNIT WT. - POUNDS	
FRAME SIZE	H.P.	RPM		A	B	C	D	E	E1	F	F1	G	H	J	LESS MOTOR	INCL. MOTOR
213T	7 1/2	1800	901461	15 3/4	65 3/8	18	58	14	2	33 1/2	10	2 1/2	4 1/4	11 1/2	848	1006
215T	10	1800	901461	15 3/4	66 7/8	18	58	14	2	33 1/2	10	2 1/2	4 1/4	11 1/2	848	1025
254T	15	1800	901463	16 5/8	70 3/4	18	64	14	2	32 1/2	12	2 1/2	4 1/4	11 1/2	876	1150
256T	20	1800	901463	16 5/8	72 1/2	18	64	14	2	32 1/2	12	2 1/2	4 1/4	11 1/2	876	1211
284T	25	1800	901464	17 1/2	73 5/8	18	64	15	1 1/2	30	14	2 1/2	4 1/4	11 1/2	877	1263
286T	30	1800	901464	17 1/2	75 1/8	18	64	15	1 1/2	30	14	2 1/2	4 1/4	11 1/2	877	1318

TYPE	SIZE	UNIT STYLE
CRL	4	VB

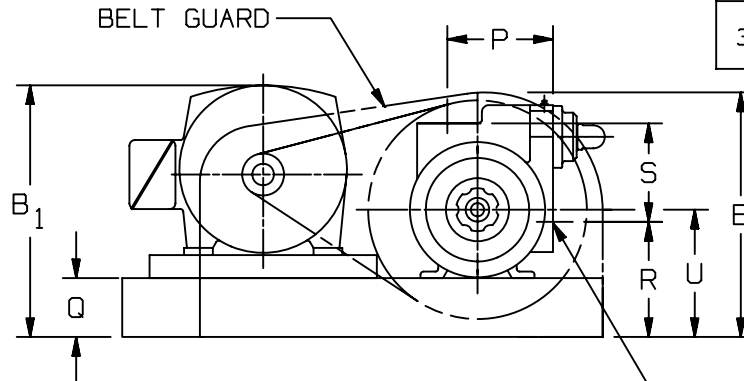
DIMENSIONS 701-109

Section 701
Effective SEPTEMBER 2023
Replaces AUGUST 2002
Page 3 / 5

RIGHT HAND ROTATION



FLANGE	UNIT	HGT.
3" WELD	IN	1 1/4
	MM	31.8
4" WELD	IN	3
	MM	76.2
3" NPT	IN	1 1/2
	MM	38.1



UNIT DIMENSIONS LESS FLANGES

* TOLERANCE ±1/8

TOLERANCE ON OTHER DIMENSIONS ±1/4

SPEED		H.P.		UNIT NO.	DIMENSIONS																				
1800	1200	FRAME SIZE	1800		1200	UNIT	A	B	B ₁	D	D ₁	F	G	H	J	K	M	N	P	Q	R	S	T	U	
330	220	213T	7.5	3	872020	IN	41 3/4	21 3/4	—	25 5/8	21	17 1/2	1	5/8	34	1 3/4	5	6 3/4	9 3/16	5 1/8	10	8 9/16	4 1/8	11 1/16	
						MM	1060,5	552,5	—	650,9	533,4	444,5	25,4	15,9	863,6	44,5	127	171,5	233,4	130	254	217,5	104,8	281	
330	220	215T	10	5	872021	IN			—	25 5/8															
						MM			—	650,9															
420	280	215T	10	5	872013	IN			—	25 5/8															
						MM			—	650,9															
420	280	254T	15	7.5	872015	IN			—	25 3/4															
						MM			—	654,1															
520	340	254T	15	7.5	872018	IN			—	25 3/4															
						MM			—	654,1															
520	340	256T	20	10	872016	IN			—	27 1/2															
						MM			—	698,5															
640	420	254T	15	7.5	872014	IN			—	25 3/4															
						MM			—	654,1															
640	420	284T	25	15	872017	IN			22 1/4	28 3/4															
						MM			565,2	730,3															

SAME AS ABOVE

