





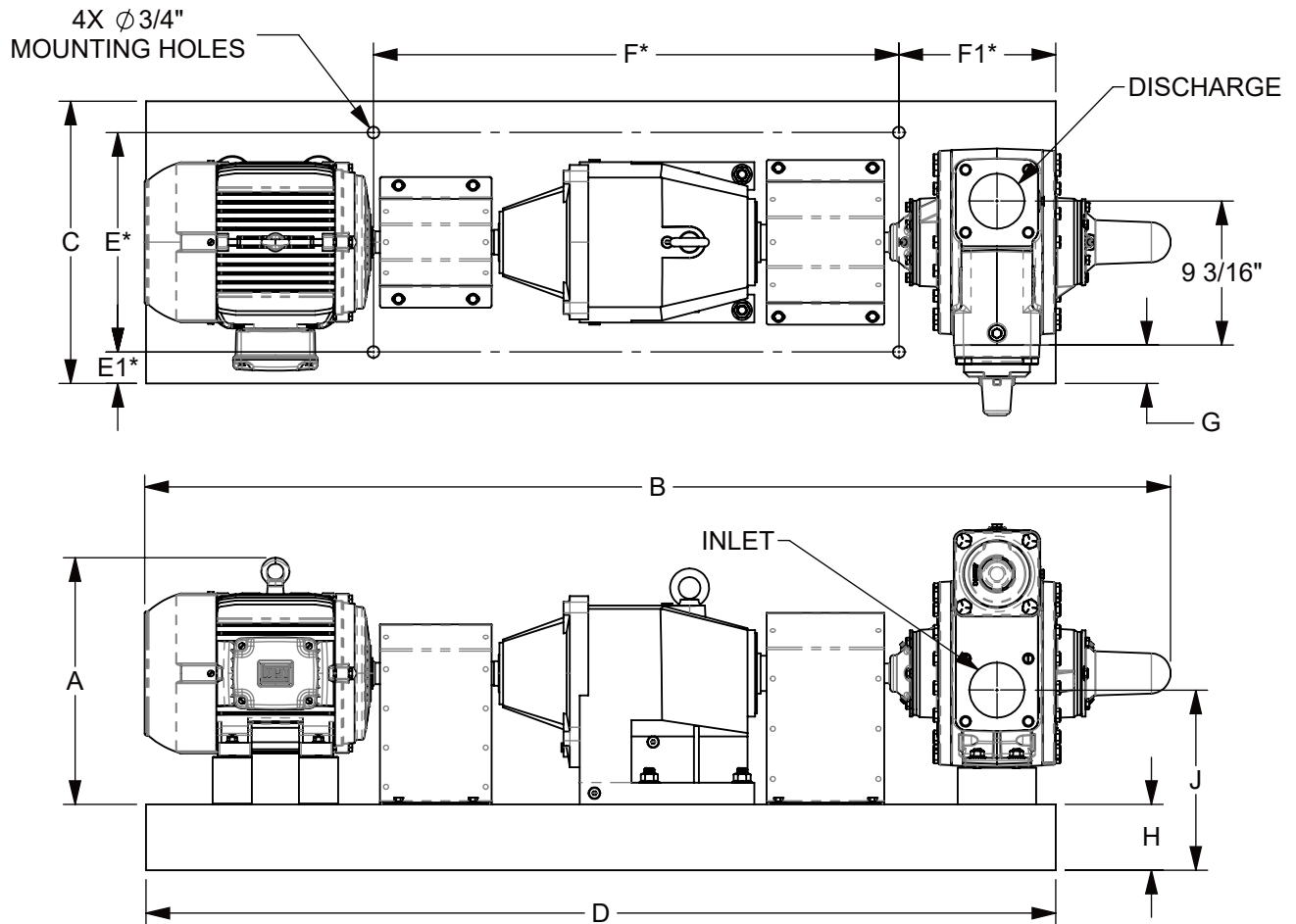
TYPE	SIZE	UNIT STYLE
<b>SGL</b>	<b>4</b>	<b>SK52W</b>

DIMENSIONS 801-107	
Section	801
Effective	September 2023
Replaces	NEW
Page 2 / 4	

RIGHT HAND ROTATION SHOWN.

\*TOLERANCE  $\pm 1/8$ "

TOLERANCE ON OTHER DIMENSIONS  $\pm 1/4$ "



"A" DIMENSION LESS MOTOR EYEBOLT

MOTOR			BASE NO.	DIMENSIONS											APPROX. UNIT WT. - POUNDS	
FRAME SIZE	H.P.	RPM		A	B	C	D	E	E1	F	F1	G	H	J	LESS MOTOR	INCL. MOTOR
213T	7 1/2	1800	901461	15 3/4	65 3/8	18	58	14	2	33 1/2	10	2 1/2	4 1/4	11 1/2	848	1006
215T	10	1800	901461	15 3/4	66 7/8	18	58	14	2	33 1/2	10	2 1/2	4 1/4	11 1/2	848	1025
254T	15	1800	901463	16 5/8	70 3/4	18	64	14	2	32 1/2	12	2 1/2	4 1/4	11 1/2	876	1150
256T	20	1800	901463	16 5/8	72 1/2	18	64	14	2	32 1/2	12	2 1/2	4 1/4	11 1/2	876	1211
284T	25	1800	901464	17 1/2	73 5/8	18	64	15	1 1/2	30	14	2 1/2	4 1/4	11 1/2	877	1263
286T	30	1800	901464	17 1/2	75 1/8	18	64	15	1 1/2	30	14	2 1/2	4 1/4	11 1/2	877	1318



**DIMENSIONS 801-107**

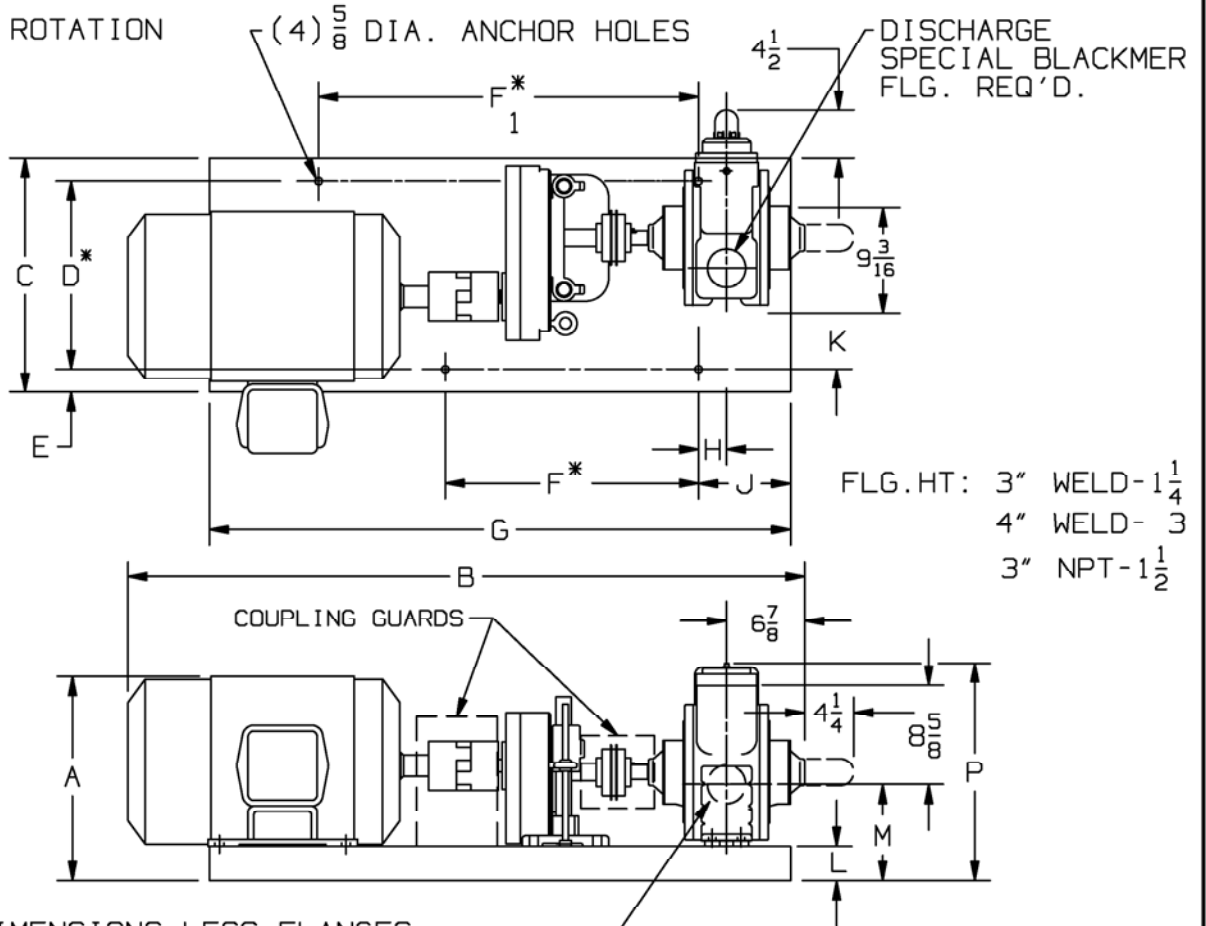
Section 801  
 Effective September 2023  
 Replaces December 2016  
 Page 4/4

TYPE	SIZE	UNIT STYLE
SGLD SGLWD	4B 4	HRB



www.blackmer.com

LEFT HAND ROTATION



UNIT DIMENSIONS LESS FLANGES

\* TOLERANCE  $\pm 1/8$   
 TOLERANCE ON OTHER DIMENSIONS  $\pm 1/4$   
 "A" DIMENSION LESS EYEBOLT

FRAME SIZE	BASE NO.	DIMENSIONS													
		A	B	C	D	E	F	F <sub>1</sub>	G	H	J	K	L	M	P
182T	901315	12 $\frac{7}{8}$	49 $\frac{1}{8}$	17 $\frac{1}{4}$	14	1 $\frac{5}{8}$	15	26	44	5 $\frac{1}{2}$	8	7	2 $\frac{1}{4}$	7 $\frac{5}{8}$	18 $\frac{5}{8}$
184T	901315	12 $\frac{7}{8}$	49 $\frac{1}{8}$	17 $\frac{1}{4}$	14	1 $\frac{5}{8}$	15	26	44	5 $\frac{1}{2}$	8	7	2 $\frac{1}{4}$	7 $\frac{5}{8}$	18 $\frac{5}{8}$
213T	901320	14 $\frac{3}{8}$	49 $\frac{7}{8}$	17 $\frac{1}{4}$	14	1 $\frac{5}{8}$	15	26	44	5 $\frac{1}{2}$	8	7	2 $\frac{1}{4}$	7 $\frac{5}{8}$	18 $\frac{5}{8}$
215T	901320	14 $\frac{3}{8}$	50 $\frac{5}{8}$	17 $\frac{1}{4}$	14	1 $\frac{5}{8}$	15	26	44	5 $\frac{1}{2}$	8	7	2 $\frac{1}{4}$	7 $\frac{5}{8}$	18 $\frac{5}{8}$
254T	901773	16 $\frac{3}{8}$	54 $\frac{3}{8}$	20 $\frac{3}{8}$	16 $\frac{3}{8}$	2	22	33	50 $\frac{1}{2}$	2 $\frac{1}{2}$	8	8 $\frac{7}{8}$	3	8 $\frac{1}{4}$	19 $\frac{3}{8}$
256T	901773	16 $\frac{3}{8}$	56 $\frac{1}{8}$	20 $\frac{3}{8}$	16 $\frac{3}{8}$	2	22	33	50 $\frac{1}{2}$	2 $\frac{1}{2}$	8	8 $\frac{7}{8}$	3	8 $\frac{1}{4}$	19 $\frac{3}{8}$
284T	901773	18	58 $\frac{1}{8}$	20 $\frac{3}{8}$	16 $\frac{3}{8}$	2	22	33	50 $\frac{1}{2}$	2 $\frac{1}{2}$	8	8 $\frac{7}{8}$	3	8 $\frac{3}{8}$	19 $\frac{3}{8}$
286T	901773	18	59 $\frac{5}{8}$	20 $\frac{3}{8}$	16 $\frac{3}{8}$	2	22	33	50 $\frac{1}{2}$	2 $\frac{1}{2}$	8	8 $\frac{7}{8}$	3	8 $\frac{3}{8}$	19 $\frac{3}{8}$