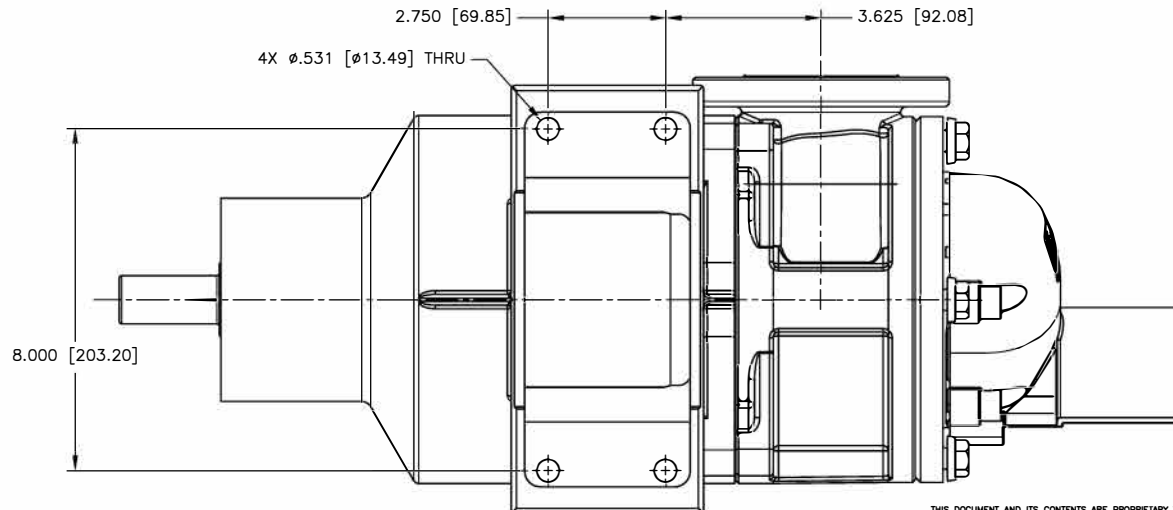
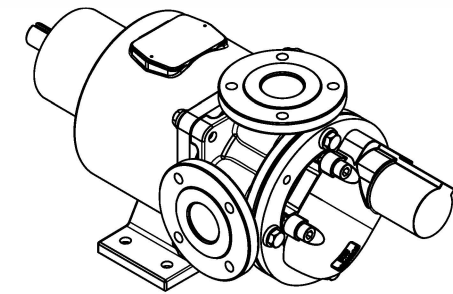
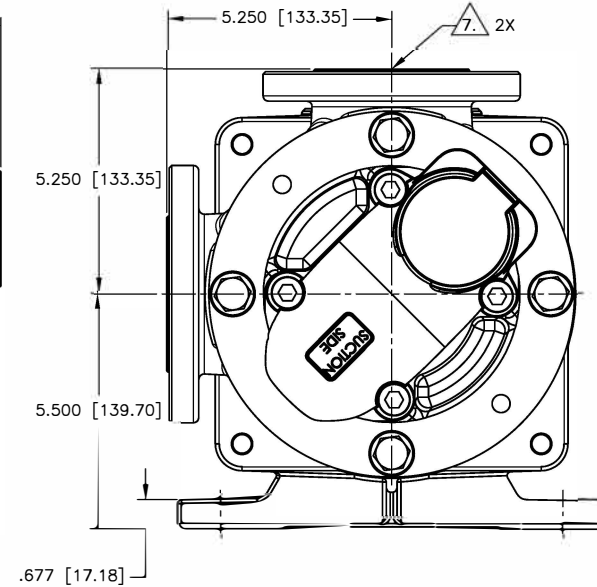
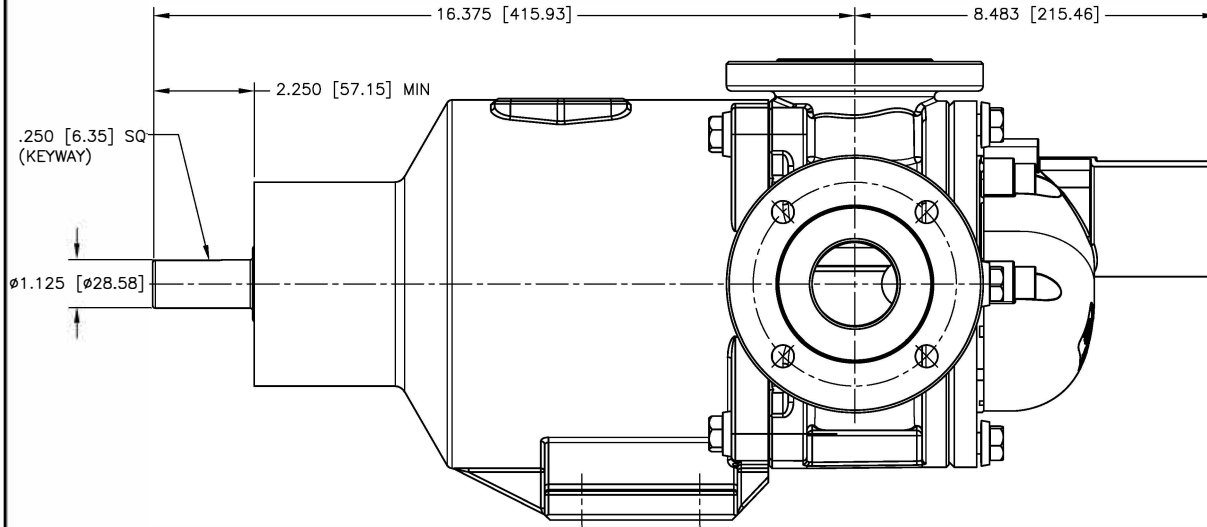


NOTES: UNLESS OTHERWISE SPECIFIED

1. DIMENSIONS AND TOLERANCES PER ASME Y14.5M-1994.
 2. * INDICATES DIMENSIONS AND/OR FEATURES MODIFIED ON CURRENT REVISION LEVEL.
 3. ALL DIMENSIONS ARE FOR REFERENCE ONLY.
 4. DIMENSIONS IN [] ARE MILLIMETERS.
 5. PORT ORIENTATION SHOWN MAY BE DIFFERENT THAN THE SELECTED ORIENTATION.
 6. THIS DRAWING DOES NOT SHOW DETAILS OF ALL OPTIONS AND ACCESSORIES.
- * ∇ AVAILABLE WITH 2" ANSI 150# RAISED FACED FLANGES, 3" ANSI 150# COMPATIBLE RAISED FACED FLANGES, AND PN16 COMPATIBLE RAISED FACE FLANGES. SEE FLANGE CHART FOR DIMENSIONS

| FLANGE DIMENSIONS | | | | |
|---------------------------------|-----------------|-----------------|-------------|-----------------|
| 2" ANSI 150# | | | | |
| NOMINAL PIPE SIZE | FLANGE DIAMETER | BOLT CIRCLE DIA | NO OF BOLTS | BOLT HOLE SIZE |
| 2.00 [50.8] | 6.00 [152.4] | 4.75 [120.7] | 4 | 0.625-11 UNC-2B |
| 3" ANSI 150# COMPATIBLE | | | | |
| 3.00 [76.2] | 7.50 [190] | 6.00 [152.4] | 4 | 0.625-11 UNC-2B |
| DIN50 ISO (DIN) PN16 COMPATIBLE | | | | |
| 2.00 [50.8] | 6.50 [165] | 4.921 [125] | 4 | M16 X 2-6H |

| REV. | DESCRIPTION | BY | CHK. | APP. | DATE |
|------|---|------|------|------|----------|
| A | RELEASED INTO PRODUCTION SEE ECN #E00122 | - | - | - | - |
| B | SEE ECN #E00195 | C.L. | R.A. | J.F. | 02/21/14 |
| C | SEE ECN #E00284 | HARI | C.L. | B.W. | 10/18/14 |



THIS DOCUMENT AND ITS CONTENTS ARE PROPRIETARY TO ENVIROGEAR INTERNAL GEAR PUMP. ANY REPRODUCTION, DISCLOSURE OR USE OF THIS DOCUMENT IS EXPRESSLY PROHIBITED EXCEPT AS OTHERWISE AGREED TO IN WRITING.

| | | | |
|---|---------------|---|---------------|
| DO NOT SCALE DRAWING UNLESS OTHERWISE SPECIFIED DIMENSIONS ARE IN INCHES TOLERANCES ARE: | | BLACKMER PUMPS 1809 CENTURY AVE SW GRAND RAPIDS, MI USA 49503 TELEPHONE 616-241-1511 WWW.BLACKMER.COM | |
| DECIMALS .XX ± - | ANGLES ± - | TITLE E1-24/32, 2" FLANGE, 90 DEG, W/ PRV DIMENSIONAL DRAWING | |
| .XXX ± - | SCALE 1/4 | DRAWN BY C. LEOPOLD | DATE 01/24/13 |
| ASSEMBLY NO. | SHEET 1 OF 1 | CHECKED BY R. ANDRADE | DATE 02/13/13 |
| APPROVED BY N. WINSOR | DATE 02/13/13 | DRAWING NO. LE0010 | REV. C |