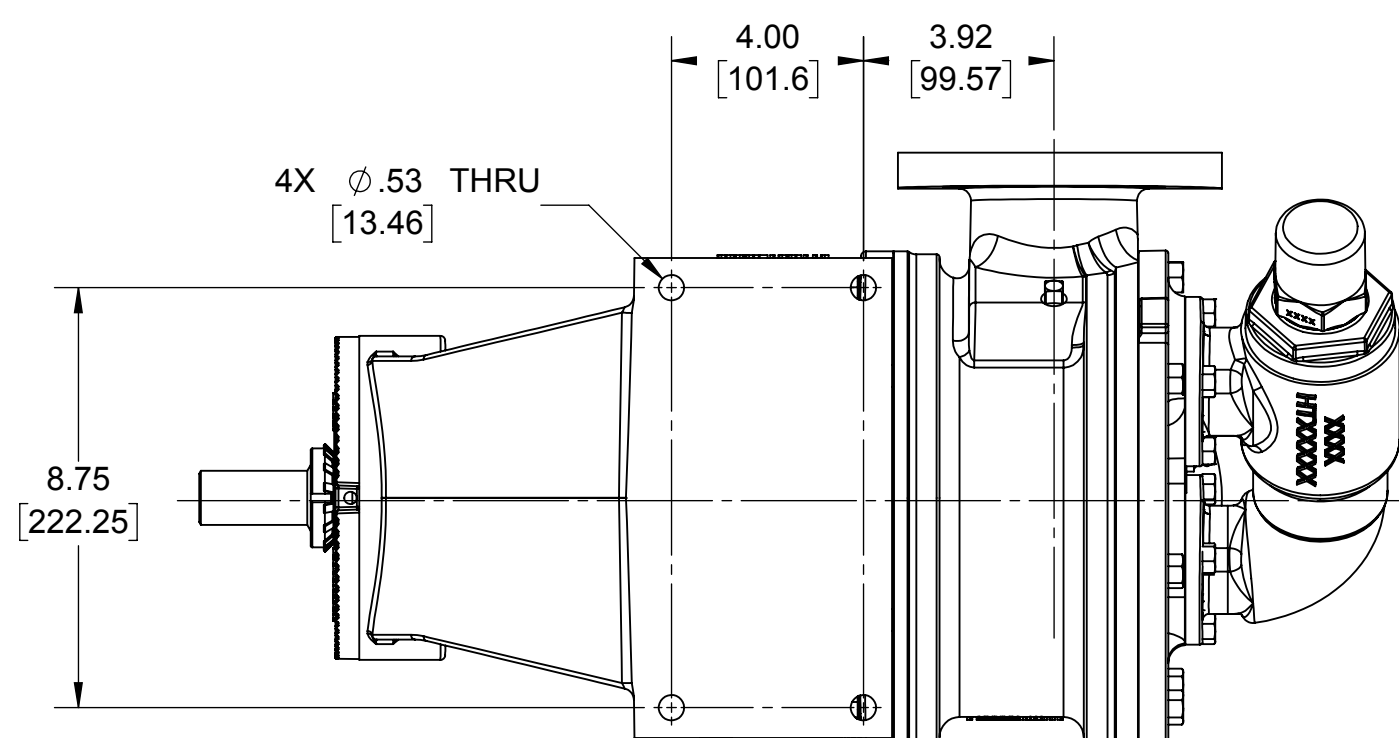
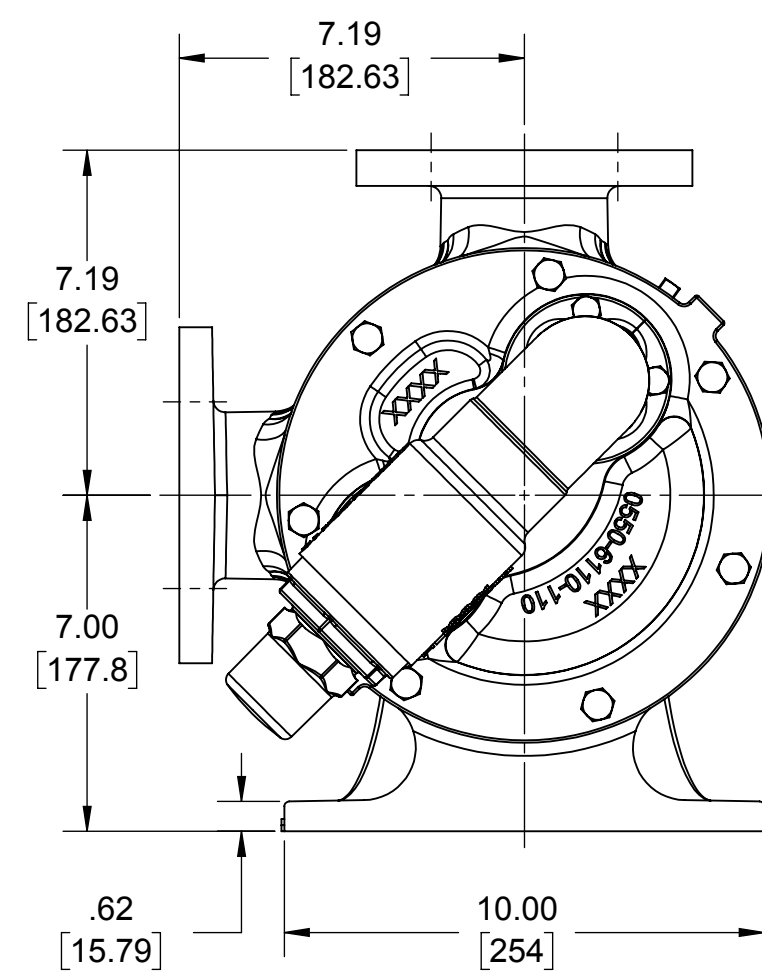
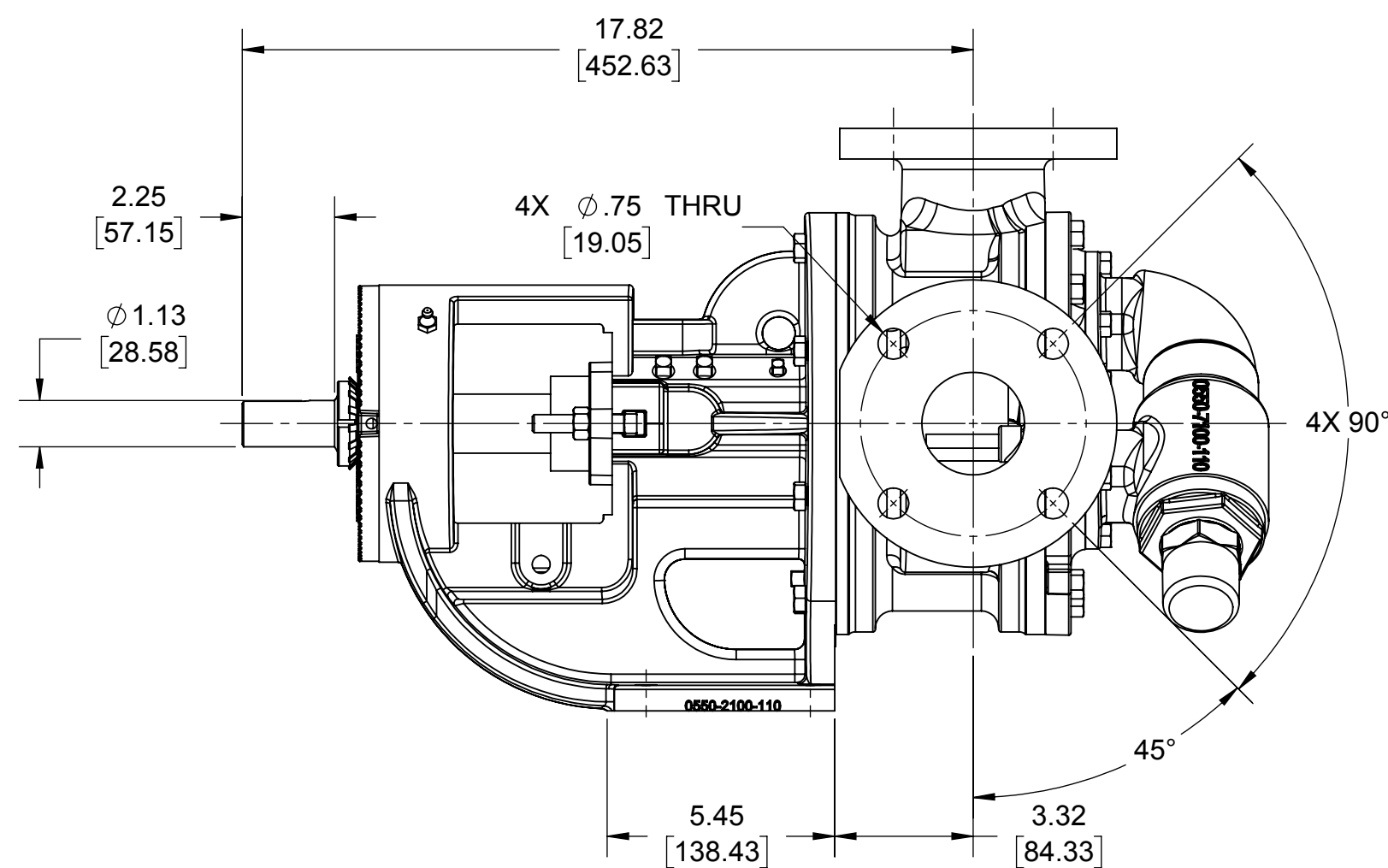
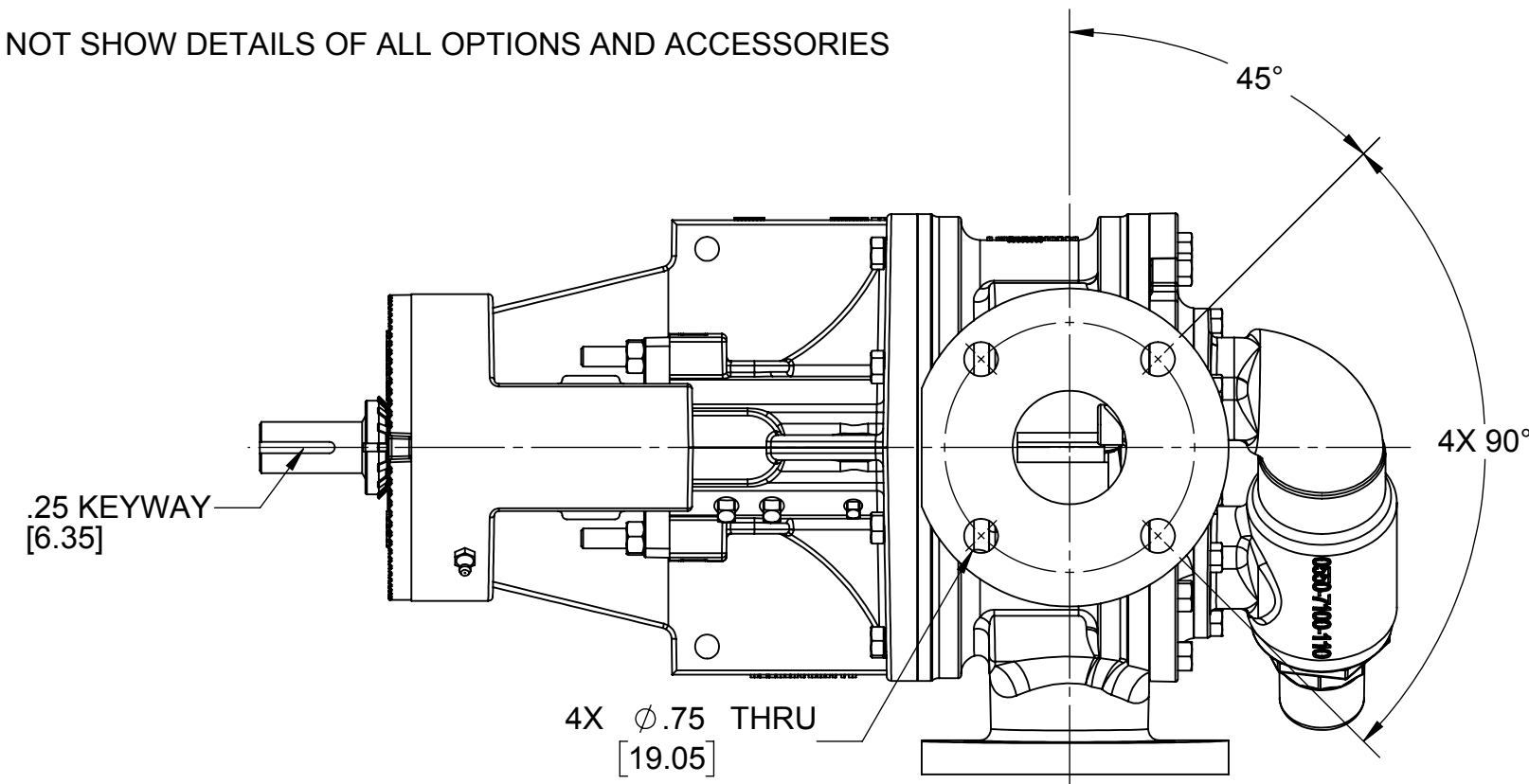


NOTES: UNLESS OTHERWISE SPECIFIED

1. DIMENSIONS AND TOLERANCES PER ASME Y14.5M-1994.
2. * INDICATES DIMENSIONS AND/OR FEATURES MODIFIED ON CURRENT REVISION LEVEL.

THIS DRAWING DOES NOT SHOW DETAILS OF ALL OPTIONS AND ACCESSORIES

REV	DESCRIPTION
A	RELEASED INTO PRODUCTION SEE ECN #N00007
B	SEE ECN #N00092
C	SEE ECN #N00193
D	SEE ECN #N00225
E	SEE ECN #N00301
F	SEE ECN #N00326



FLANGE DIMENSIONS				
3" ANSI 125#				
NOMINAL PIPE SIZE	FLANGE DIA	BOLT CIRCLE DIA	NO. OF BOLTS	BOLT HOLE SIZE
3"	7.50 [190.50]	6.00 [152.4]	4	.75 [19.05]
3" ANSI 150#				
3"	7.50 [190.50]	6.00 [152.4]	4	.75 [19.05]

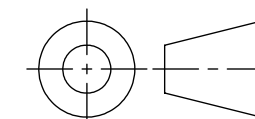
THIS DOCUMENT CONTAINS PROPRIETARY INFORMATION OF PSG - A DOVER COMPANY. ITS RECEIPT AND POSSESSION DO NOT CONVEY ANY RIGHTS TO REPRODUCE OR DISCLOSE ITS CONTENTS OR TO MANUFACTURE USE OR SELL ANYTHING IT MAY DESCRIBE. THIS DOCUMENT IS SUBJECT TO RETURN UPON REQUEST. REPRODUCTION, DISCLOSURE OR USE OF THIS DOCUMENT WITHOUT THE WRITTEN AUTHORIZATION OF DOVER CORPORATION IS STRICTLY FORBIDDEN.

DO NOT SCALE DRAWING UNLESS OTHERWISE SPECIFIED DIMENSIONS ARE IN INCHES TOLERANCES ARE:

DECIMALS .XX ± -

THIRD ANGLE PROJECTION

ANGLES ± -



DRAWN BY C. LEOPOLD DATE 05/02/12
APPROVED BY J. FARLEY DATE 06/05/12



BLACKMER® PUMPS
1809 CENTURY AVE SW
GRAND RAPIDS, MI USA 49503
TELEPHONE: 616-241-1611
WWW.BLACKMER.COM

TITLE **PUMP ASSEMBLY, DIMENSIONAL G1-69, FLANGED**

SIZE C	DRAWING NO. LM0009	REV. F
SCALE 1:4	SHEET	1 OF 1