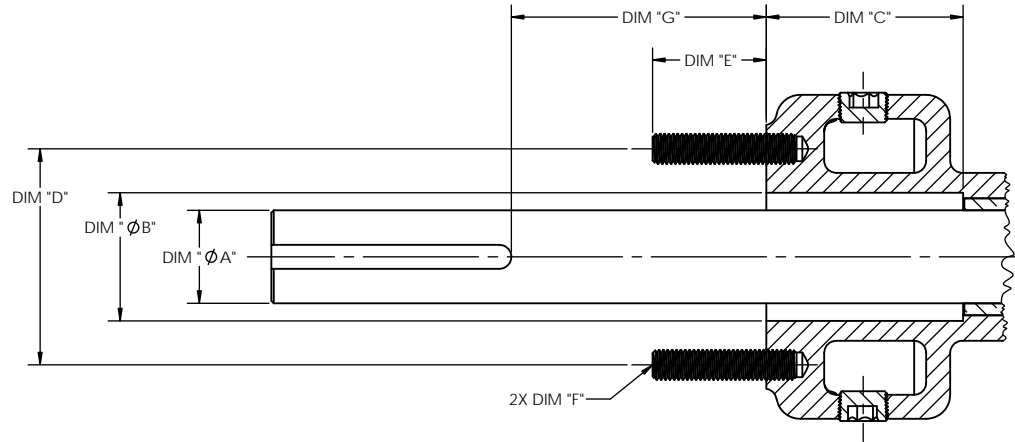


NOTES: UNLESS OTHERWISE SPECIFIED

1. * INDICATES DIMENSIONS AND/OR FEATURES MODIFIED ON CURRENT REV LEVEL.

DRAWING DOES NOT SHOW DETAILS OF ALL OPTIONS AND ACCESSORIES

REV	DESCRIPTION
A	RELEASED INTO PRODUCTION SEE ECN #N00335



PUMP SIZE	UNITS	DIM "ØA"	DIM "ØB"	DIM "C"	DIM "D"	DIM "E"	DIM "F"	DIM "G"
V-55	in	Ø1.44	Ø2.18	3.88	3.25	1.64	7/16-14 UNC	7.75
	mm	Ø36.52	Ø55.25	98.43	82.55	41.73	-	196.85
V-133/254	in	Ø1.94	Ø2.67	4.10	4.50	2.38	5/8-11 UNC	14.31
	mm	Ø49.21	Ø67.89	104.14	114.3	60.33	-	363.53
V-423	in	Ø2.44	Ø3.42	4.38	6.00	2.25	5/8-11 UNC	9.86
	mm	Ø61.91	Ø86.86	111.13	152.4	57.15	-	250.44

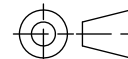
THIS DOCUMENT CONTAINS PROPRIETARY INFORMATION OF PSG - A DOVER COMPANY. ITS RECEIPT AND POSSESSION DO NOT CONVEY ANY RIGHTS TO REPRODUCE OR DISCLOSE ITS CONTENTS OR TO MANUFACTURE USE OR SELL ANYTHING IT MAY DESCRIBE. THIS DOCUMENT IS SUBJECT TO RETURN UPON REQUEST. REPRODUCTION, DISCLOSURE OR USE OF THIS DOCUMENT WITHOUT THE WRITTEN AUTHORIZATION OF DOVER CORPORATION IS STRICTLY FORBIDDEN.

DO NOT SCALE DRAWING
UNLESS OTHERWISE SPECIFIED
DIMENSIONS ARE IN INCHES
TOLERANCES ARE:

DECIMALS .XX ± -

ANGLES ± -

THIRD ANGLE PROJECTION



DRAWN BY CJL	DATE 2018-03-26
APPROVED BY BA	DATE 2018-03-29



BLACKMER® PUMPS
1809 CENTURY AVE SW
GRAND RAPIDS, MI USA 49503
TELEPHONE: 616-241-1611
WWW.BLACKMER.COM

TITLE	V-SERIES SEAL CHAMBER	
SIZE	DRAWING NO.	REV.
C	LM0068	A
SCALE	1:2	SHEET
		1 OF 1