

# BLACKMER DRUMMING VALVE

## USED ON MODEL TX3DR & TNP3DR PUMPS

*These models are obsolete.  
Parts availability will be limited.*

**INSTRUCTIONS &  
PARTS LIST NO. 286/D**

Section	200
Effective	July 1973
Replaces	286/D
	Dated Mar. 73

(See Operating and Maintenance Instruction No. 285/C and 285/F for Models TX3B and TNP3A pumps respectively. See Parts Lists No. 285/C5 and No. 285/F7 for Models TX3B and TNP3A pumps respectively.)

### INSTALLATION

This drumming valve assembly is designed to make a quick pressure control adjustment between approximately 25 psi for filling barrels and 100 psi for maximum capacity bulk delivery.

To mount the valve assembly on an existing pump, first remove the pressure control cover assembly, spring guide, spring, and valve. Install the valve, two springs, and two spring guides into the pump cylinder in the order shown in the isometric drawing. Install the gasket and cover, taking

care to insure that the valve rod (Pc. 45) is properly positioned in outer spring guide (Pc. 7), and bolt down cover. The cover should be installed in the most convenient of the three positions possible for access to the cam lever.

The lever pin and contact surfaces on the cam lever should be coated with a heavy-duty grease for ease of operation and to prevent corrosion. Grease with molybdenum disulfide is recommended.

### OPERATION

Initially set adjusting screw with a 13/16" dimension between the bottom of the adjusting screw hex head and the top of the pressure control cover.

Adjust the cam lever so that the thin section is between the adjusting screw and the valve rod. This is the low (approximately 25 psi) setting.

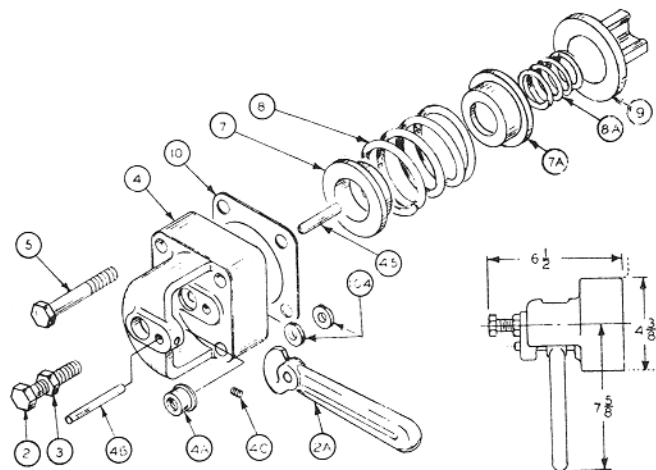
Install a pressure gage on the pump gage connection. Start pumping. Close the discharge valve slowly. To increase the

pressure setting, loosen the adjusting screw locknut and turn the adjusting screw clockwise (inward). To reduce the setting, turn the adjusting screw counterclockwise (outward).

Note: Increasing the minimum setting will also increase the maximum setting. Move the cam lever in the other direction, the maximum position, to check the maximum setting. If desired, the maximum setting can be adjusted first to a 75-100 psi differential. This will result in a low pressure setting of 20-25 psi.

### PARTS LIST

REF. NO.	PART NAME	NO. REQ. PER VALVE	PART NO.
2	Adjusting Screw	1	431802
2A	Cam Lever	1	521801
3	Locknut	1	922870
4	Cover	1	411803
4A	Threaded Insert	1	521805
4B	Lever Pin	1	521803
4C	Set Screw	1	922082
5	Cap Screw	4	920444
7	Spring Guide, Outer	1	421851
7A	Spring Guide, Inner	1	421853
8	Spring, Outer, Carbon Steel	1	471832
	Spring, Outer, Stainless Steel		471834
8A	Spring, Inner, Carbon Steel	1	471835
	Spring, Inner, Stainless Steel		471836
10	Gasket	1	531851
45	Valve Rod	1	421801
104	Lip Seal	2	331851
9*	Valve	1	451807



\* Model TX3B and Model TNP3A Already Include Valve #451807. Models TX3, TX3A and TNP3 Will Require New Valve #451807.

**blackmer** / A **DOVER** RESOURCES COMPANY

1809 Century Avenue, Grand Rapids, Michigan 49509, U.S.A. • (616) 241-1611 • Telex: 4320148 • Fax: (616) 241-3752