

BLACKMER PUMP PARTS LIST

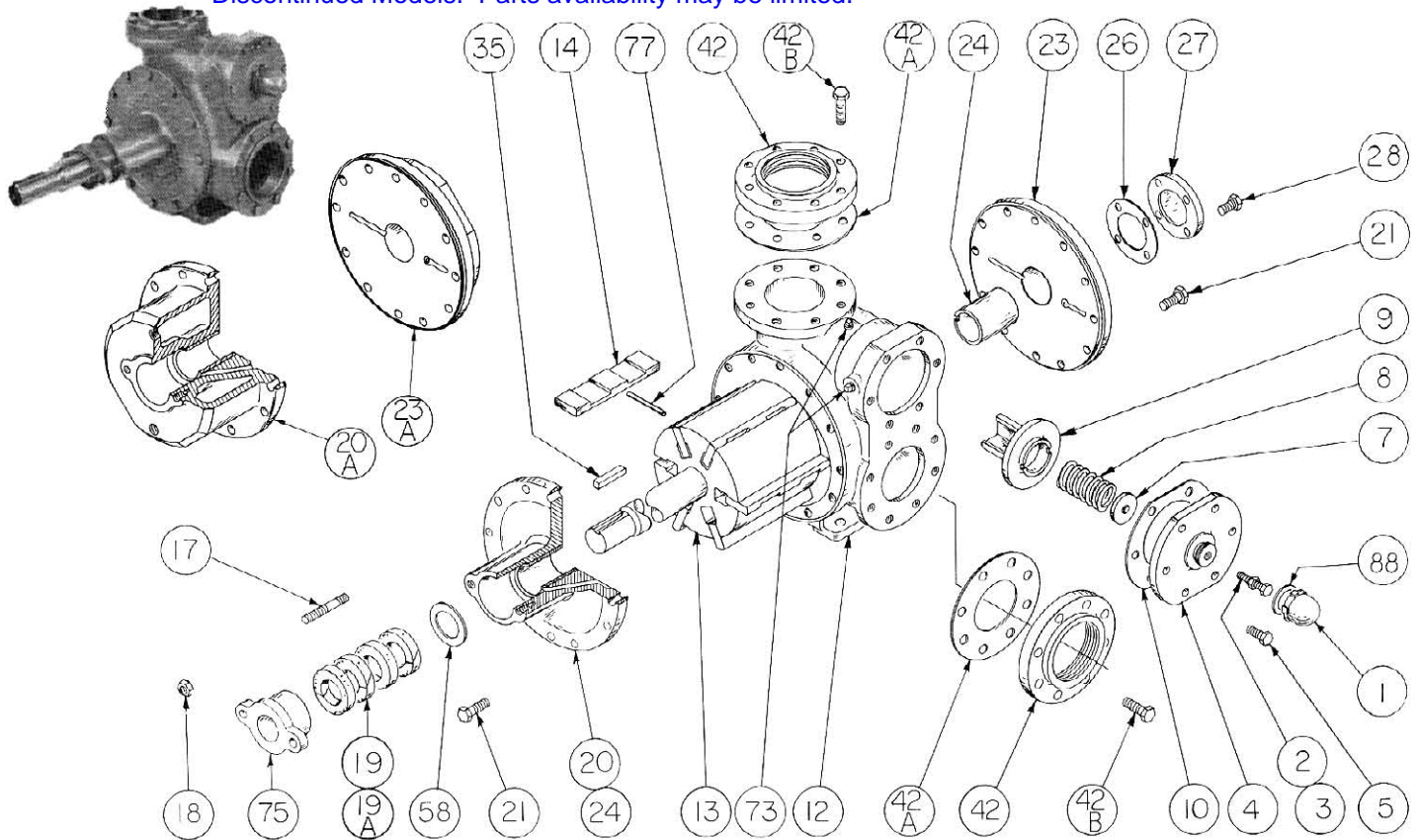
960245
PARTS LIST NO. 185/F9

MODELS: NP4A, NPJ4A

(See Instructions 185/F for Operation and Maintenance)

Discontinued Models. Parts availability may be limited.

Section 100
Effective November 1988
Replaces May 1982



REF. NO.	PART NAME	PARTS PER PUMP	PART NO.	REF. NO.	PART NAME	PARTS PER PUMP	PART NO.
1	Cap - Relief Valve (R/V)	1	413952	14	Vane - EC Laminate 3	6	091931
2	Adjusting Screw - R/V	1	436307		Vane - EC Cast Iron 3		091952
3	Locknut - R/V Adjusting Screw	1	436355		Vane - EC Bronze (Std. - NPJ) 3		091953
4	Cover - R/V	1	411903	20	Head & Bushing Assy. - Inboard	1	031952
5	Capscrew - R/V Cover	6	920351	20A	Head & Bushing Assy. - Inboard (Jacketed)	1	031956
7	Spring Guide - R/V	1	426355	21	Capscrew - Head	24	920532
8	Spring - R/V (35-50 psi)	1	476303	23	Head & Bushing Assy. - Outboard	1	031953
	Spring - R/V (51-75 psi)		476310	23A	Head & Bushing Assy. - Outboard (Jacketed)	1	031957
	Spring - R/V (76-150 psi)		476305	24	Sleeve Bearing	2	161900
	SS Spring - R/V (35-50 psi) 1		476320	26	Gasket - Bearing Cover	1	381921#
	SS Spring - R/V (51-75 psi) 1		476314	27	Bearing Cover	1	041921
9	Valve - R/V	1	456315	28	Capscrew - Bearing Cover	4	920351
10	Gasket - R/V Cover	1	531921#	42	Flange - NPT	1 - 2	651900
12	Cylinder	1	021905		Flange - Weld		651905
13	Rotor & Shaft (Std. - NP) (1 3/4" X 18")	1	261948	42A	Gasket - Flange (Fiber)	2	381903#
	EC Rotor & Shaft (Std. - NPJ) (1 3/4" X 18") 3		261949		Gasket - Flange (Composition)		381904
	Rotor & Shaft (1 3/4" X 19 1/2") 2		261946	42B	Capscrew - Flange	8 - 16	920532
	EC Rotor & Shaft (1 3/4" X 19 1/2") 2,3		261947	73	Gage Plug	2	908195
14	Vane - Duravane (Std. - NP)	6	091924	77	Push Rod	3	121905
	Vane - Cast Iron		091950	88	Gasket - R/V Cap	1	533908#
	Vane - Bronze		091951		Gasket Repair Kit		891917

Parts included in Gasket Repair Kit.

1 Optional Stainless Steel Spring (over 300°F/149°C).

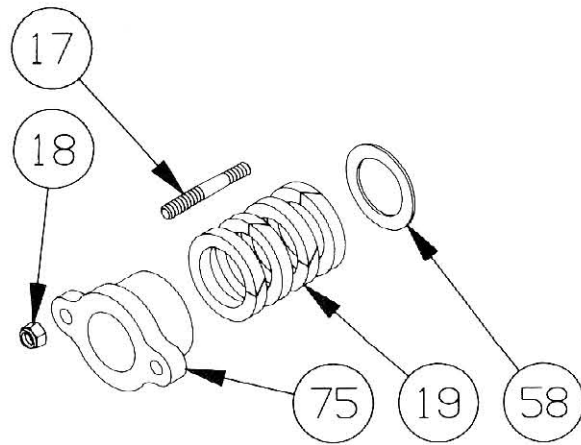
2 Used for V-belt drive. A commercial shaft support bearing must be added.

3 Use for viscosities over 20,000 SSU (4250 Cs), and/or jacket option. (Indicated by markings on outboard shaft end and on vanes).

PARTS LIST NO. 185/F10

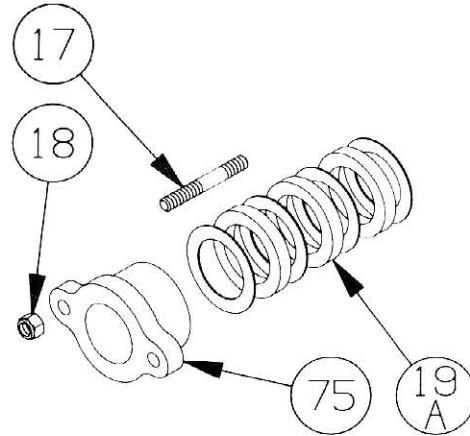
NP(J)4 - PACKING - STANDARD

REF. NO.	PART NAME	PARTS PER PUMP	PART NO.
17	Stud - Packing Follower	2	921561
18	Nut - Packing Follower Stud	2	922420
19	Packing	1	326976
58	Pack Washer	1	356905
75	Packing Follower	1	146921



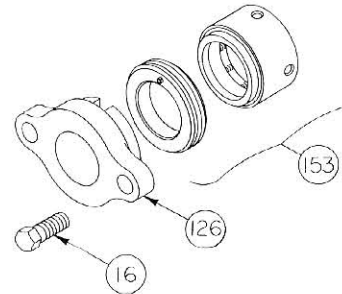
NP(J)4 - TEFLON LIP SEAL - OPTIONAL

REF. NO.	PART NAME	PARTS PER PUMP	PART NO.
17	Stud - Packing Follower	2	921561
18	Nut - Packing Follower Stud	2	922420
19A	Lip Seal	1	331978
75	Packing Follower	1	146921



NP(J)4 - MECHANICAL SEAL - OPTIONAL

REF. NO.	PART NAME	PARTS PER PUMP	PART NO.
16	Capscrew - Seal Retainer	2	920491
126	Retainer - Seal	1	146920
153	Mechanical Seal - (Crane #9)	1	331963



OPTIONAL PARTS FOR SHEAR SENSITIVE LIQUIDS - NP4 MODEL
(Must be used as a group)

REF. NO.	PART NAME	PARTS PER PUMP	PART NO.
13	Rotor & Shaft (1 3/4" X 18")	1	261900
14	Vane - EC Iron	6	091952
20	Head & Bushing Asy. - Inboard	1	031954
23	Head & Bushing Asy. - Outboard	1	031955

OPTIONAL PARTS FOR SHEAR SENSITIVE LIQUIDS - NPJ4 MODEL
(Must be used as a group)

REF. NO.	PART NAME	PARTS PER PUMP	PART NO.
13	Rotor & Shaft (1 3/4" X 18")	1	261900
14	Vane - EC Iron	6	091952
20	Head & Bushing Asy. - Inboard	1	031958
23	Head & Bushing Asy. - Outboard	1	031959