

BLACKMER PUMP PARTS LIST

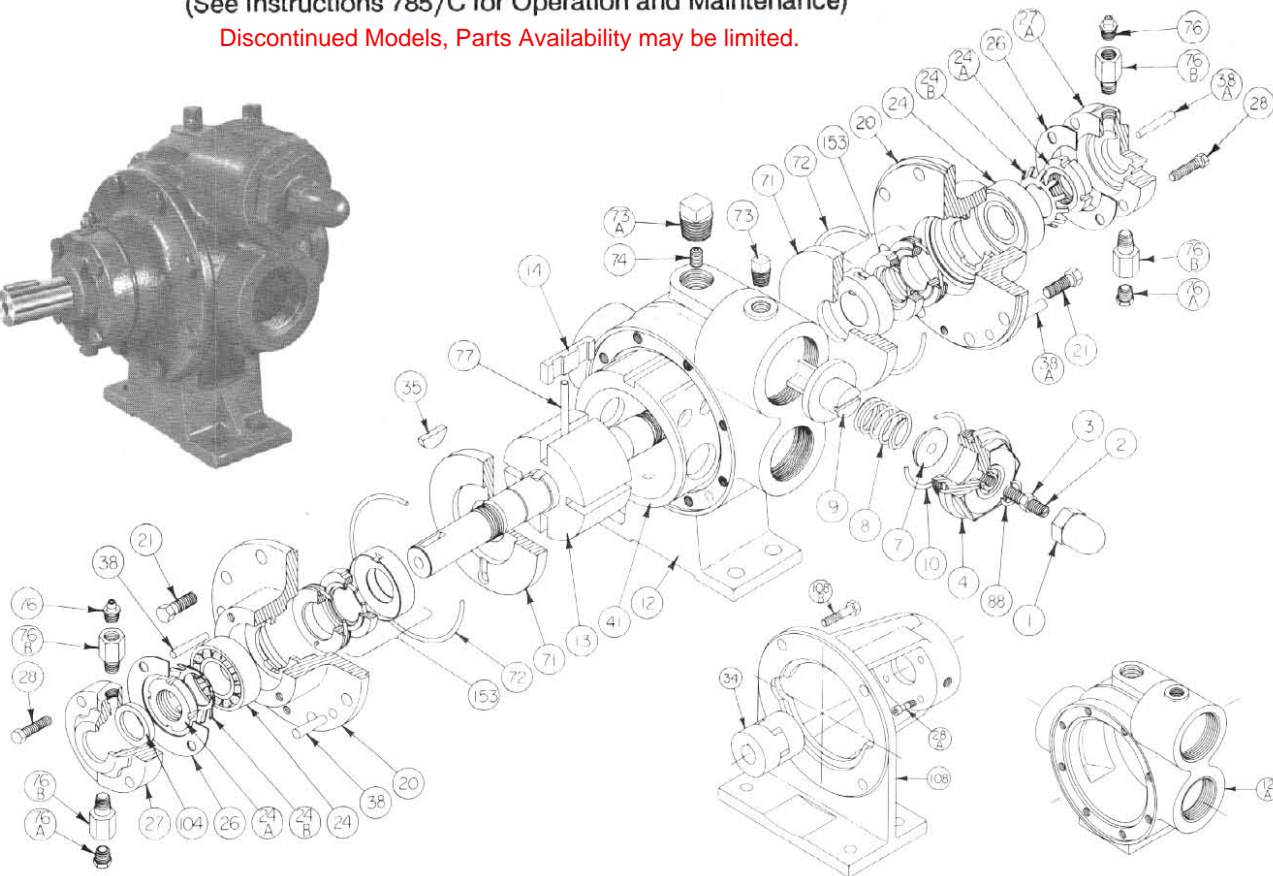
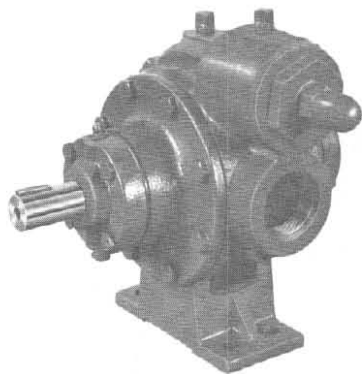
962301
PARTS LIST NO. 785/C1

MODELS: CRLRF1¼, CRLR1¼, CRLF1¼,
CRL1¼, CRLF1½, CRL1½

Section 700
Effective April 1990
Replaces July 1983

(See Instructions 785/C for Operation and Maintenance)

Discontinued Models, Parts Availability may be limited.



REF. NO.	PART NAME	PARTS PER PUMP	PART NO.	REF. NO.	PART NAME	PARTS PER PUMP	PART NO.
1	Cap - Relief Valve (R/V)	1	413200	71	Disc	2	063075
2	Adjusting Screw - R/V	1	433909	72	O-Ring - Head	2	701918
3	Locknut - Adjusting Screw	1	922923	73	Gage Plug (¼")	1	908195
4	Cover - R/V	1	413076	73A	Gage Plug (½")	1	908215
7	Spring Guide - R/V	1	423955	74	Setscrew - Liner	1	922088
8	Spring - R/V (81 - 125 psi)	1	471428	76	Grease Fitting	2	317815
9	Valve - R/V	1	453077	76A	Grease Relief Fitting	2	701992
10	O-Ring - R/V Cover	1	711924	76B	Extension Coupling	4	701905
12	Casing (1¼)	1	013075	77	Push Rod - CRLR(F)1¼	2	123004
	Casing - (1½)		013376		Push Rod - CRL(F)1¼		123076
	Rotor & Shaft Assembly (includes Ref. Nos. 24A & 24B)	1	263076		Push Rod - CRL(F)1½		123401
13	Rotor & Shaft Assembly (includes Ref. Nos. 24A & 24B)	1	263076	88	O-Ring - R/V Cap	1	701949
14	Vane - Laminate	4	093089	104	Grease Seal	1	331927
20	Head	2	033073	FLANGE MOUNTING			
21	Capscrews - Head	16	920276	12A	Casing w/o Feet (F1¼)	1	013077
24	Ball Bearing	2	903114		Casing w/o Feet (F1½)		013377
24A	Locknut - Bearing	2	903534	28A	Mounting Screws	4	920101
24B	Lockwasher - Bearing	2	903533		Coupling Half - Pump (F1¼)		906147
26	Gasket - Bearing Cover	2	383075	34	Coupling Half - Pump (F1½)	1	906143
27	Bearing Cover - Inboard	0 - 1	043070		Coupling Half - Motor (F1¼)		906146
27A	Bearing Cover - Outboard	1	043071		Coupling Half - Motor (F1½)		906141
28	Capscrews - Bearing Cover	4 - 8	920080		Coupling Spider (F1¼)		906155
35	Key - Shaft	1	909125		Coupling Spider (F1½)		906154
38	Taper Pin (#2 x 1")*	2	930037	108	Mounting Bracket	1	833000
38A	Taper Pin (#3 x 1¼")*	2	930075	108B	Capscrews - Bracket	4	920331
41	Liner - CRLR(F)1¼	1	183003				
	Liner - CRL(F)1¼		183004				
	Liner - CRL(F)1½		183301				

* Pumps with serial numbers below 276745-N require taper pins p/n 930075 and p/n 930141.

PARTS LIST NO. 785/C2

MECHANICAL SEAL - STANDARD

REF. NO.	PART NAME	PARTS PER PUMP	PART NO.
153	Mechanical Seal Assembly	2	333025
153A	Stationary Seat (Carbon)	2	333023
153B	Seal Face (Silicon Carbide)	2	333024
153C	Jacket Assembly	2	333001
153D	O-Ring - Stationary (Buna-N)	2	702042
153E	O-Ring - Rotating (Buna-N)	2	711915

