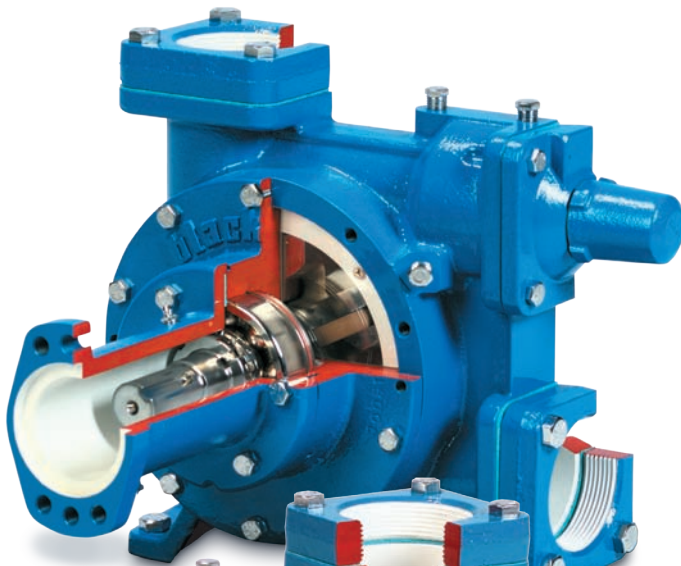
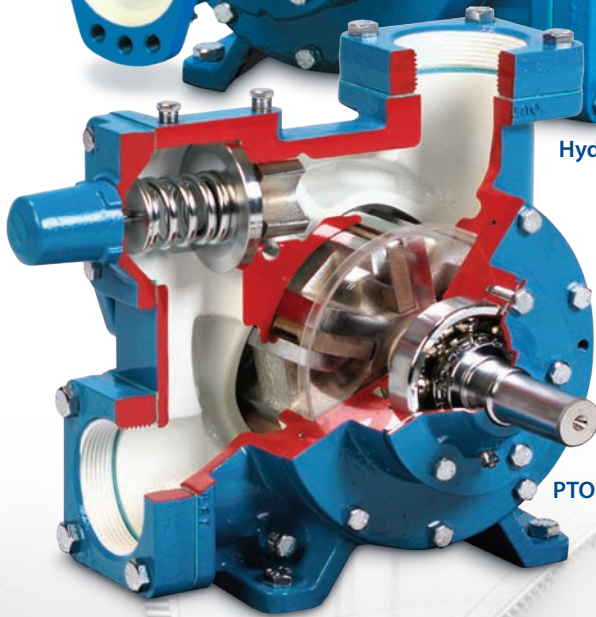




Transmax TX206A Sliding Vane Transport Pumps



Hydraulic Drive



PTO Drive

Design

The unique open rotor design makes the Transmax highly versatile. The sliding vane design provides sustained high-performance capabilities including self-priming and line clearing.

Application

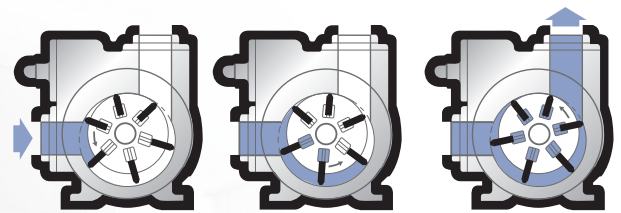
The TX206A is capable of pumping thin to thick liquids from 30 to 50,000 ssu (7 to 10,500 cP) with sustained performance at rated P.T.O. speeds, maximum 800 rpm.

Benefit

The Transmax is self-priming and capable of line clearing; these benefits are not found with existing gear pumps. Also, the Transmax is specifically designed for easy cleaning. Multiple drain ports allow for proper flushing in a variety of mounting positions.

Hydraulic Drive Options

Blackmer offers fully-integrated hydraulic drive systems including pumps, motors, close coupled hydraulic motor adapters, control valves, P.T.O.'s and coolers.



How Blackmer's sliding vane action works





Transmax TX206A Sliding Vane Transport Pumps

Characteristic Flow Rates at 75 psi (5.2 bar)

Pump Model	Speed	100 ssu (22 cSt)		10,000 ssu (2,157 cSt)		50,000 ssu (10,500 cSt)	
	rpm	gpm	L/min	gpm	L/min	gpm	L/min
TX206A	400	94	355	104	393	101	382
	500	122	461	131	495	126	477
	600	147	556	157	594	152	575
	700	174	658	184	696	169	639
	800	203	768	206	780	–	–

Note: Optional materials of construction may be required to meet specific application requirements – please refer to Blackmer Material of Construction pages.
For operating limits that exceed those listed – consult factory.

*Standard construction rated at 150°F (66°C).

Optional Pipe Flanges

Pump Model	Description
TX206A	3" NPT 3" Weld

Sales Information and Equipment Application Assistance

Blackmer has a world wide distribution network to assist you in specifying any of our family of pumps, compressors and other equipment for your application.

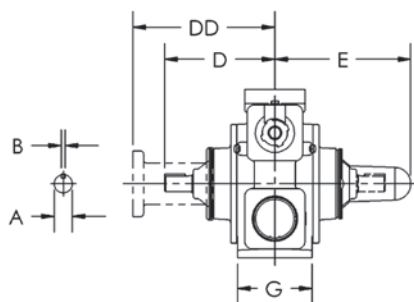
For more information, or to find the distributor nearest to you, please contact us at the telephone, fax or internet address listed below.

Maximum Operating Limits

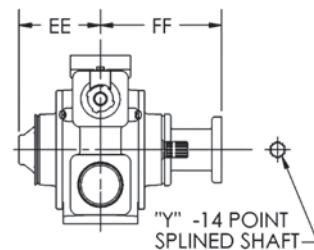
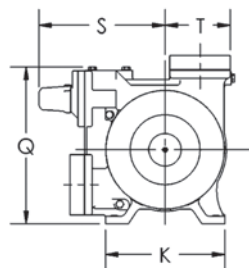
Pump Model	Nominal Flow Rate		Pump Speed	Viscosity		Differential Pressure		Working Pressure		Temperature	
	gpm	L/min	rpm	ssu	cSt	psi	bar	psi	bar	°F	°C
TX206A	206	780	800	50,000	10,500	125	8.62	175	12.06	300	149

Pump Dimensions

Pump Model	A	B	D	E	G	K	Q	S	T	Y	DD	EE	FF	Weight	
TX206A	in.	1¼	5/16	8 11/16	10 5/8	5 7/8	9 3/8	12 3/8	10	5 1/8	1 1/4	11 3/16	6 7/16	9 9/16	146 lbs
	mm	–	–	221	270	149	238	314	254	130	32	284	164	243	66 kgs



Keyed Shaft and Hydraulic Drive Option



Splined Shaft Hydraulic Drive Option
(left hand rotation only)



Process | Energy | Military & Marine
PSG Grand Rapids
1809 Century Avenue SW, Grand Rapids, MI 49503-1530 USA
T 616.241.1611 • F 616.241.3752
blackmer.com



Authorized PSG® Partner: