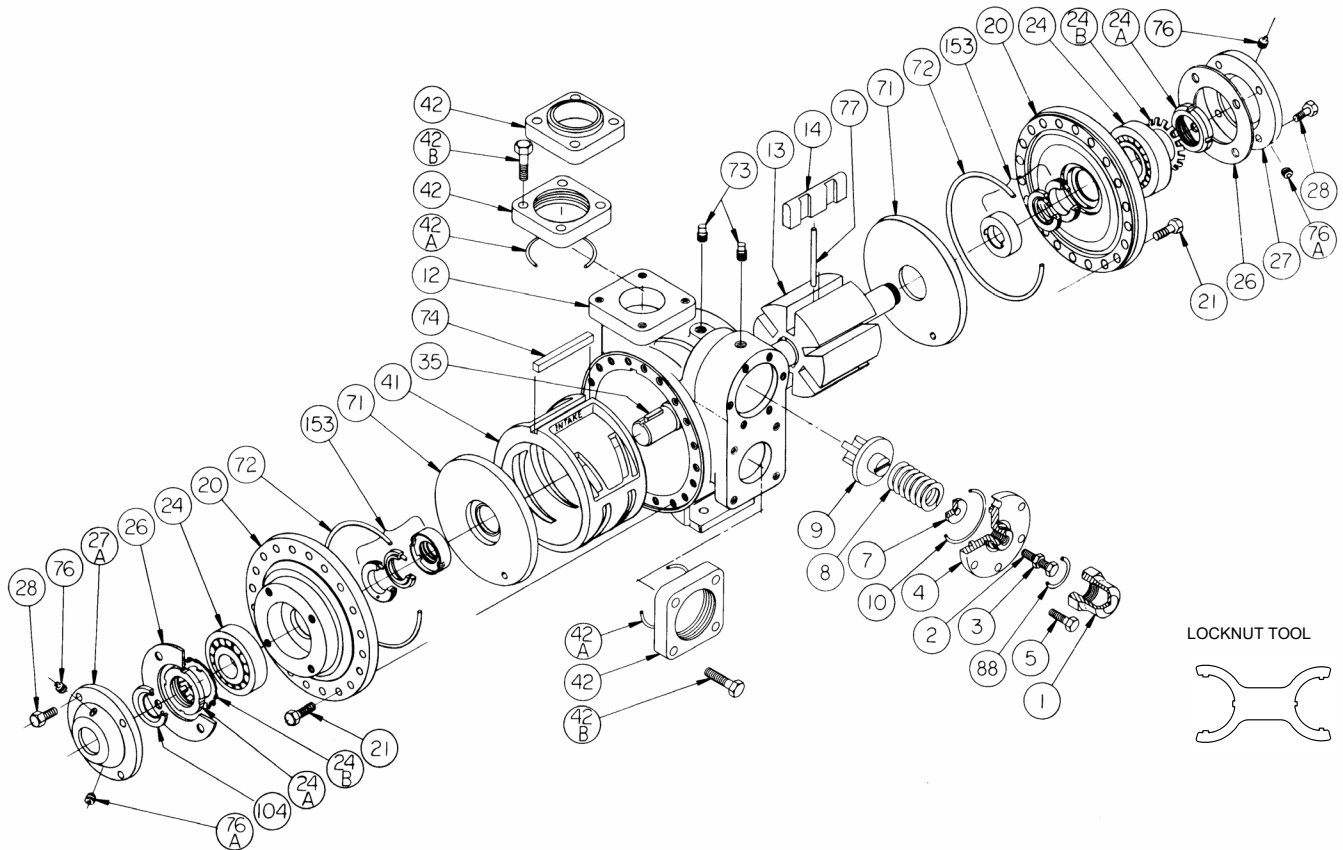


BLACKMER PARTS LIST

PUMP MODEL: XLW3F DISCONTINUED MODEL: XLW3E-N

Keep with Instructions 105-B00 Installation, Operation and Maintenance

Section | 105
Effective | Sept 2023
Replaces | Sept 2012



Ref. No.	Description	Parts per Pump	Part No.	Ref. No.	Description	Parts per Pump	Part No.
1	Cap – Relief Valve (R/V)	1	414402	27	Bearing Cover – Outboard	1	041817
2	Adjusting Screw – R/V	1	435109	27A	Bearing Cover – Inboard	1	041815
3	Locknut – Adjusting Screw	1	922923	28	Capscrews – Bearing Cover	8-12	920285
4	Cover – R/V	1	415109	35	Key – Shaft Square	1	^{1,3} 909209
5	Capscrew – R/V Cover	6	920331	41	Liner	1	² 185116
7	Spring Guide – R/V	1	425109	42 ⁴	Flange – NPT	2	655112
8	Spring – R/V (51-100 psi) (std.)	1	471621		Flange – Weld		655102
	Spring – R/V (101-150 psi)		475109	42A	O-Ring – Flange (FKM)	2	¹ 711931
9	Valve – R/V	1	455109		O-Ring - Flange (PTFE)		702080
10	O-Ring – R/V Cover (FKM)	1	¹ 701924	42B	Capscrew – NPT Flange	8	920547
	O-Ring - R/V Cover (PTFE)		702079		Capscrew – Weld, ANSI		920510
12	Casing	1	015127	71	Disc	2	² 065114
13	EC Rotor & Shaft Asy. (-.045) (std.)	1	² 265143	72	O-Ring – Head (FKM)	2	¹ 711938
	FS Rotor & Shaft Asy. (Both Include Ref. 24A & 24B)		265204		O-Ring – Head (PTFE)		702082
14	Vane – EC Hardened Iron (std.)	6	¹ 095129	73	Gage Plug	2	908195
	Vane – EC Laminate		095107	74	Key – Liner	1	² 185191
20	Head	2	035128	76	Grease Fitting	2	317815
21	Capscrews – Head	32-40	920369	76A	Grease Relief Fitting	2	701992
24	Ball Bearing	2	¹ 903172	77	Push Rod	3	¹ 125105
24A	Locknut – Bearing	2	903523	88	O-Ring – R/V Cap (FKM)	1	¹ 701979
24B	Lockwasher – Bearing	2	¹ 903524		O-Ring - R/V Cap (PTFE)		702075
26	Gasket – Bearing Cover	2	¹ 385125	104	Grease Seal	1	¹ 331908
					Tool - Locknut		903091
					Kit - Maintenance		898975
					Kit - Rebuild		899075

¹ Included in Maintenance Kit and Rebuild Kit

² Included in Rebuild Kit

EC = Extra Clearance

FS = Full Size

³ Maintenance & Rebuild Kits also include Woodruff Key 909130 used previously

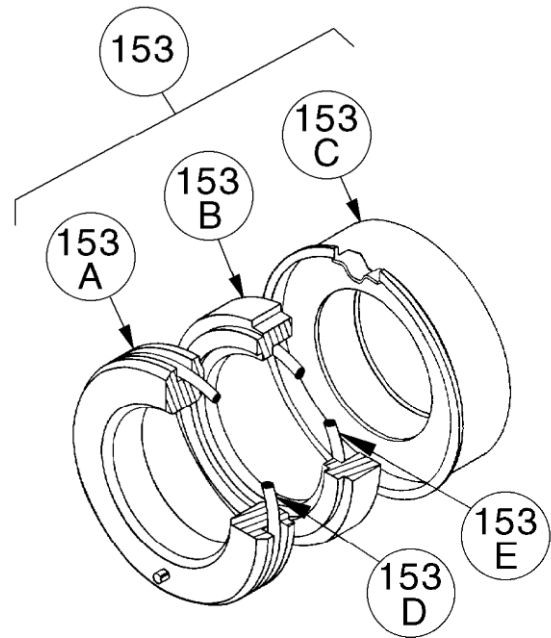
⁴ See more flanges on backside.

MECHANICAL SEALS

Ref. No.	Part Name	Parts Per Pump	Part No.
153	Mechanical Seal Complete – (Std.) Silicon Carbide Stationary Seat, Hardened Steel Seal Face, FKM O-Rings. (LVSV)	2	¹ 335147
	Mechanical Seal Complete – Silicon Carbide Stationary Seat, Hardened Steel Seal Face, PTFE O-Rings. (LAST)		335150
	Mechanical Seal Complete – Silicon Carbide Stationary Seat, Silicon Carbide Seal Face, FKM O-Rings. (LVLV)		335149
153A #	Stationary Seat (Silicon Carbide)	2	---
153B #	Rotating Seal Face (Hardened Steel)	2	---
	Rotating Seal Face (Silicon Carbide)		---
153C #	Jacket Assembly	2	---
153D	O-Ring – Stationary (FKM)	2	702015
	O-Ring – Stationary (PTFE)		711999
153E	O-Ring – Rotating (FKM)	2	701962
	Seal Ring – Rotating (PTFE)		701963

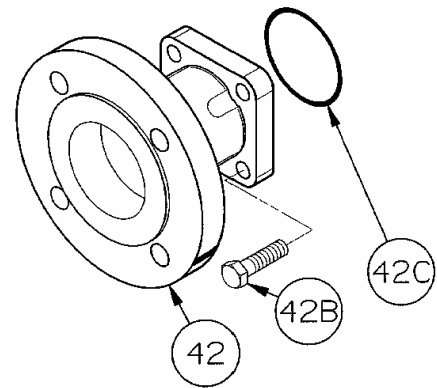
¹ Included in Maintenance Kit and Rebuild Kit

These components are included in the complete mechanical seal assemblies (Ref. No. 153), and are NOT available as replacement parts. Consult factory.



FLANGE OPTIONS

Ref. No.	Part Name	Parts Per Pump	Part No.
42	Flange – ANSI 3" 150 lb. R.F.	1-2	651817



ANSI FLANGE

