

SYSTEM ONE® PARTS

Frame SD

Keep with Instructions 1301-C00 for Installation, Operation and Maintenance

PN: 967102 **PARTS LIST**
1301-C05

Section	1301
Effective	Nov 2018
Replaces	Nov 2012

r130321

	Page
X-Section Drawing	2
Casings (Ref #1)	3
Impellers (Ref #2)	3
Shafts / Rotating Elements (ref #6)	3
Back Covers (Ref #11)	3
Other Parts (Ref #16 - 896)	4

Recommended Spare parts (Ref #s are shaded)

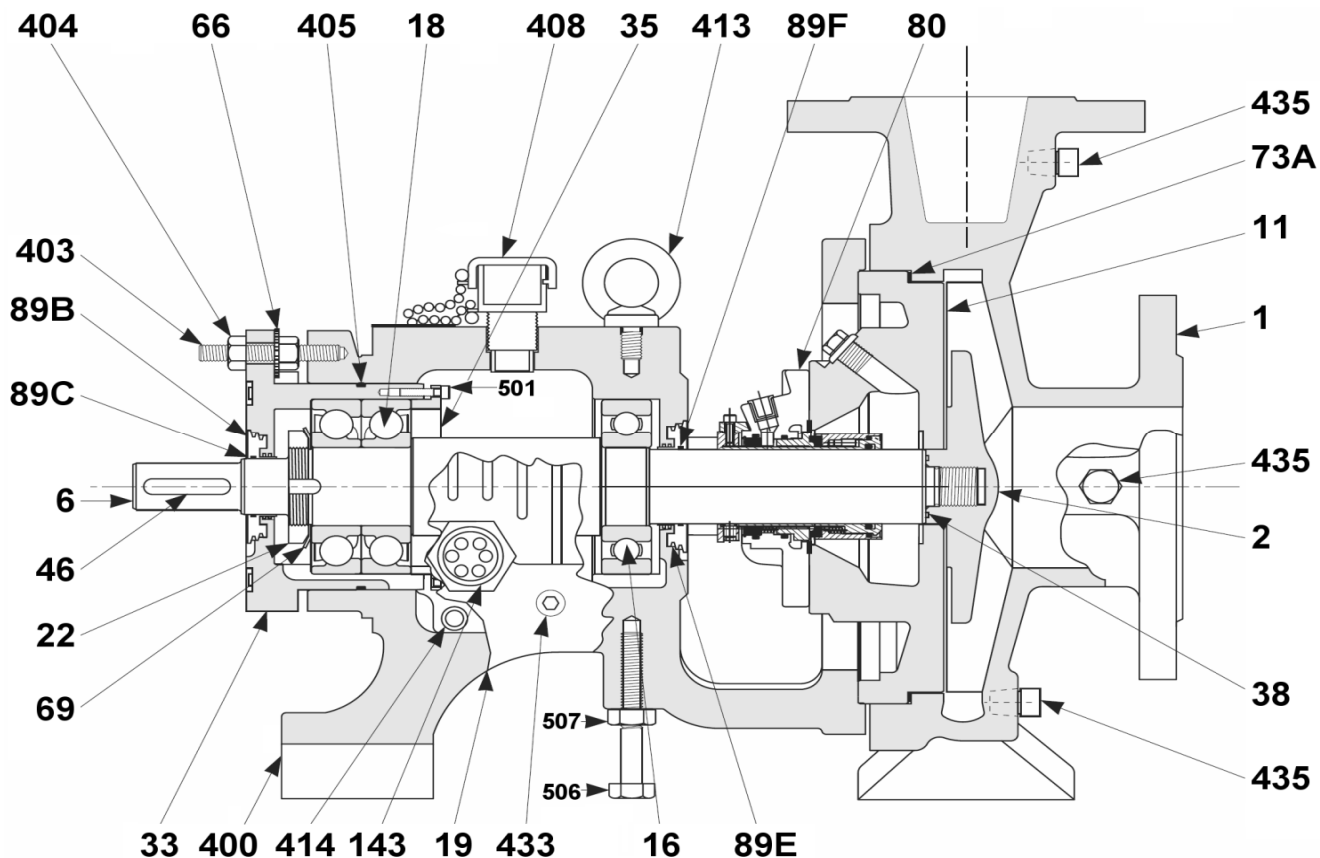
Ref #	Description
2	Impeller
6-RE	Rotating Element
73A	Casing Gasket
80	Mechanical Seal
89B	Lab Seal Rotor (w/ O-ring), Thrust Bearing
89E	Lab Seal Rotor (w/ O-ring), Radial Bearing
405	Cartridge O-ring



T: 616-241-1611 • Fx: 616-241-3752
1809 Century Avenue, Grand Rapids, Michigan 49503, U.S.A

www.blackmer.com

Frame-SD Cross Section



Ref.	Description	Ref.	Description	Ref.	Description
1	Casing	46	Key, Coupling	403	Stud, Cartridge
2	Impeller	66	Micrometer Nut	404	Locknut, Cartridge
6	Shaft	69	Lockwasher, Thrust Bearing	405	O-Ring, Cartridge
11	Back Cover	73A	Gasket, Casing	408	Oil Filler Assembly
16	Bearing, Radial	80	Mechanical Seal	413	Bolt, Eye
18	Bearing, Thrust	89B	Seal, Labryinth Rotor, Thrust	414	Plug, Magnetic
19	Bearing Frame	89C	Seal, Labryinth O-Ring, Thrust	433	Plug, Bearing Frame
22	Locknut, Thrust Bearing	89E	Seal, Labryinth Rotor, Radial	435	Plug, Casing
33	Bearing Cartridge	89F	Seal, Labryinth O-Ring, Radial	501	Screw, Retainer Cover
35	Retainer Cover	143	Oil Sight Glass	506	Screw, Foot Adjust
38	O-Ring, Impeller Hub	400	Foot Spacer for 160mm height	507	Locknut, Foot Adjust



Frame-SD SPARE PARTS

Ref #1 Casing Assembly Frame-SD				
Standard Casing Assemblies include studs and nuts, but do not include gasket (73A). Optional plugs are included when applicable. Ductile iron casing assemblies will be discontinued once stock is depleted.				
Flange	Other	CF8M	DI	Note
32x50-160 Material - Part Number for Casing Assembly				
PN16	- Drain	364169	364070	
32x50-200 Material - Part Number for Casing Assembly				
PN16	- Drain	364168	364071	
50x80-200 Material - Part Number for Casing Assembly				
PN16	- Drain	364167	364072	DI is unavailable
Hardware included with standard Frame-SD casing assemblies.				
*	Stud (8 included)		364088	
*	Nut (8 included)		350544	

* Not depicted in drawing.

Ref #	Description	Parts/pump	Part #	Note
2	Impeller Assembly 32x50-160 CD4	1	364067	
	Impeller Assembly 32x50-200 CD4		364068	
	Impeller Assembly 50x80-200 CD4		364069	
Impeller assembly includes trim, ISO G 6.3 balance and PTFE O-ring (38). Specify trim at time of order. There is a charge to retrim after shipment (981631).				

6-SA	Shaft Assembly FRSD CS/316	1	364075	
6-RE	Rotating Element FRS CS/316 (w/ 7308)		364076	
Ref# 6-SA: Shaft Assembly Includes shaft (6), locknut (22), locknut washer (69), and key (46). Ref# 6-RE: Rotating Element Includes shaft assembly (6-SA), bearings (16&18), bearing cover (35).				

11	Standard Back Cover Assembly CF8M 160mm	1	364170	
	Standard Back Cover Assembly CF8M 200mm		364171	
Hardware included with standard Frame-SD Back Cover Assemblies				
*	Gland Stud	4	090059	
*	Nut for Gland Stud	4	350549	
*	Mounting Stud	2	364087	
*	Nut for Mounting Stud	2	364096	
*	Plug (option)	1	CF	

* Not depicted in drawing.

12*	Jacket Assembly for Seal Chamber FRSD only	1	059268	
12A*	Jacket for Seal Chamber FRSD only		059267	included in #12
12B*	Outer O-Ring for Seal Chamber Jacket FRSD	Optional	362052	included in #12
12C*	Inner O-Ring for Seal Chamber Jacket FRSD		090992	included in #12

* Not depicted in drawing.



Frame-SD SPARE PARTS

Ref.#	Description	Parts/pump	Part #	Note
16	Radial Bearing 6308 C3	1	099649	
18	Thrust Bearing 7308 BEGAY	2	363378	
19	Bearing Frame Assembly Includes bearing frame (19), sight glass (143), stud (403), oil cap (408), eye bolt (413), plugs (414 & 433), support screw and locknut (506 & 507), jackbolts (not shown).	1	364082	
22	Bearing Locknut KM8	1	363379	
33	Cartridge Incl. Hrdw'r, O-Ring		364080	
35	Retainer Cover	1	099644	
38	Impeller O-ring	1	090712	Included in #2
46	Key	1	364100	
66	Micrometer Nut SS	3	364089	
69	Bearing Lockwasher MB8	1	363380	
73A	Casing Gasket CFN 1.5 mm Casing Gasket RG0 3.0 mm Casing Gasket RPE 1.5 mm Casing Gasket PTFE 1.5 mm	1	364098 CF CF CF	
80	Mechanical Seal - See mechanical seal pages	1		
89B	Thrust Lab Seal Rotary SS	1	099646	
89C	Thrust Lab Seal Rotary O Ring (2-024 FKM)	1	098954	Included in 89B
89E	Radial Lab seal Rotary SS	1	099647	
89F	Radial Lab Seal Rotary O Ring (2-029 FKM)	1	098972	Included in 89E
143	Oil Sight Glass 0.75-14 NPT	1	099645	
400	Spacer Assembly Bearing Frame Front Foot (160 mm height only)	1	364108	
403	Micrometer Stud (10x1-6x55) SS	3	364099	
404	Cartridge Locknut (10x1-6) SS	3	364095	
405	Cartridge O-Ring (2-155 Buna)	1	099897	Included in #33
408	Oil Filler and Cap	1	098364	
413	Lifting Eye Bolt	1	364085	
414	Magnetic Drain Plug .25-18 NPT	2	099792	
433	Magnetic Drain Plug .25-18 NPT	1	099792	
435	Plug, Casing (Optional)	1-3		Included in #1
501	Retainer Cover Socket Head Cap Screws	8	364091	
506	Screw, foot adjusting	1	364084	
507	Locknut, Foot adjusting	1	364094	
*	Jackscrew	2	364093	
*	Temperature Monitor (option)	1	685362	
*	Bearing Housing Cooling Coil (option)	1	099904	

* Not depicted in drawing.

Material Key for Casing Gaskets (73A)			
Abrv	Description	Application	Old Type
CFN	Carbon Fiber with nitrile binder (Standard)	General	197
RG0	Reinforced Graphite no binder	High Temperature	199
RPE	Reinforced PTFE	High Temperature/Pressure	196
PTFE	PTFE Style 2000	Chemical Resistant	2000

