

# BLACKMER GEAR PUMP

PARTS LIST  
MODELS: V2-423

Keep with Instructions 1903-a00 for Installation, Operation and Maintenance

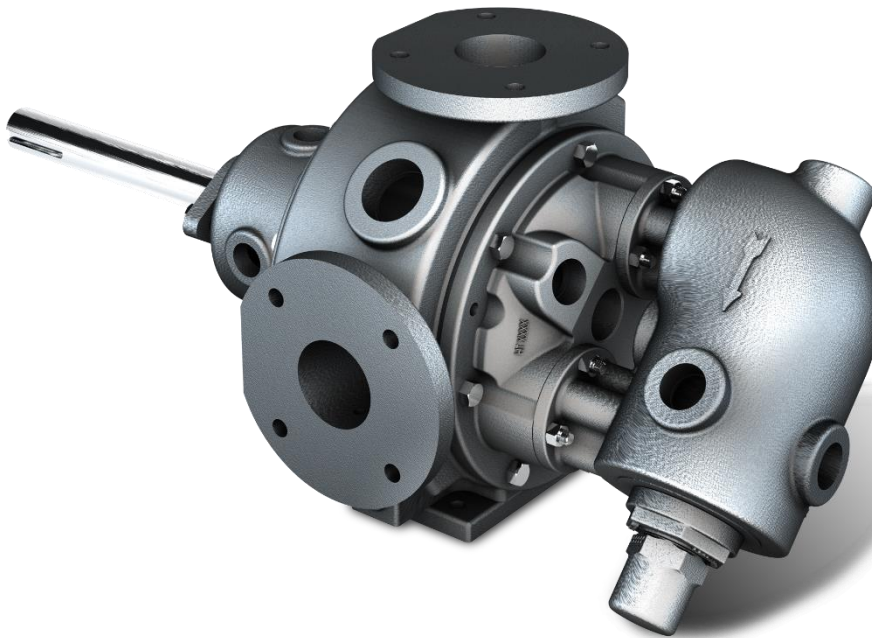
960727

INSTRUCTIONS NO. 1903-a04

Section  
Effective  
Replaces

1903  
October 2022  
September 2022

# V Series Internal Gear Pumps



Where Innovation Flows

*Blackmer*

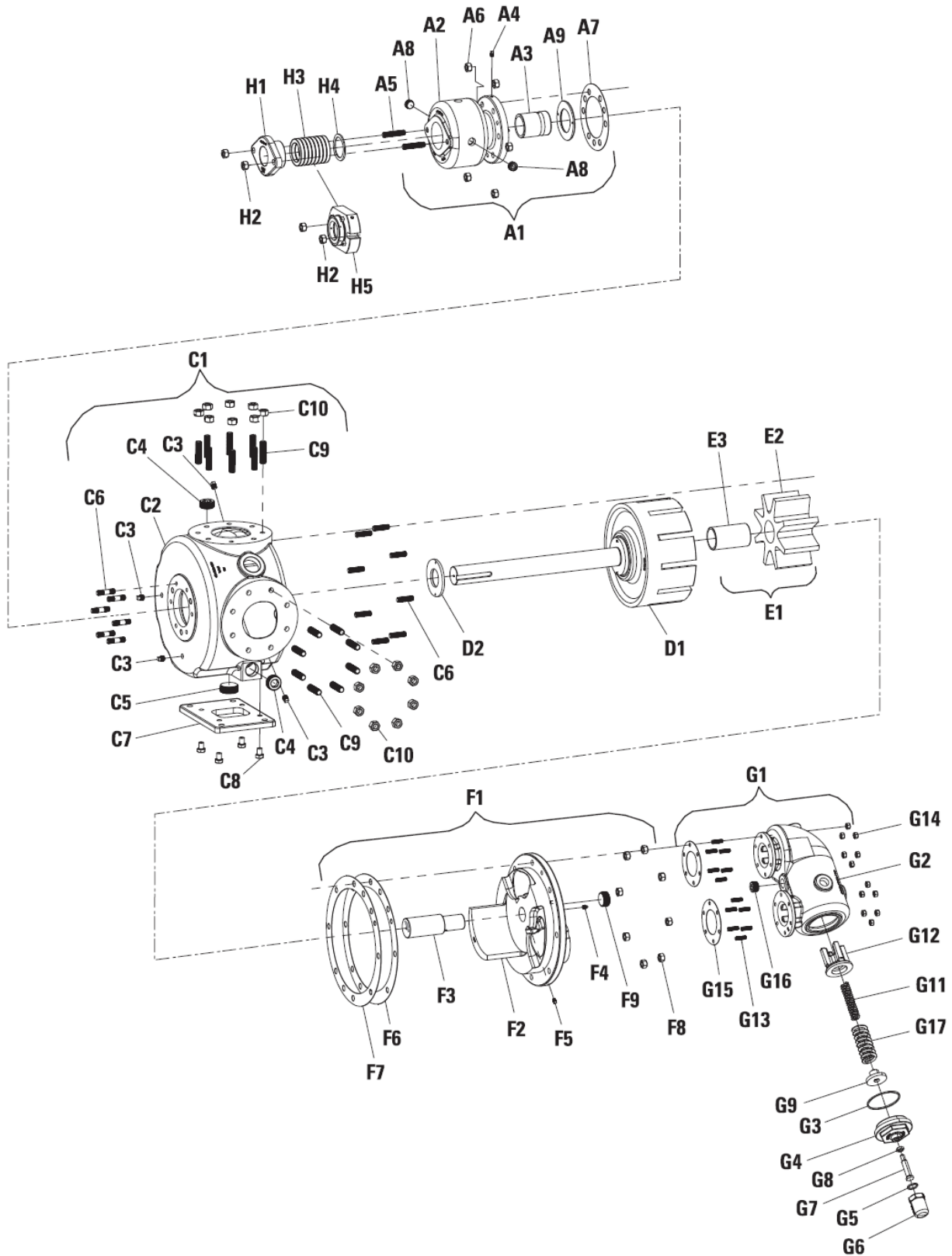
Always read the most current version of this manual before performing any work on or around this pump. The most current version of this manual is freely available on the web at [www.blackmer.com](http://www.blackmer.com)

Blackmer pumps are specifically configured for your unique application conditions. Those application conditions and the details of the pump configuration were documented during the ordering process. Keep that information available in a safe place, as it may be needed when troubleshooting pump problems or when ordering spare parts or repairs.

Blackmer Gear Pumps are covered by one or more of the following patents: U.S. Patent Nos. 7549205, 7137793, 7183683, 8,608,465B2 Australian Patent No. AU2005233534B2; Korean Patent No. 10-2006-7023162; Mexican Patent No. PA/2006/011436, Russian Patent No. 2006138540(041952); China Patent No. ZL 201280031563.6; and other patents pending.

# EXPLODED VIEW AND PARTS LISTING

V2-423



## Parts Listing

Item	Description	V2-423	Quantity	Material
A1	ROTOR BEARING SLEEVE, ASM, JACKETED, V-423, CAST IRON (INCLUDES A2 THRU A9)	4230-2040-110	1	CAST IRON
A2	ROTOR BEARING SLEEVE, JACKETED, V-423, CAST IRON	4230-2140-110	1	CAST IRON
A3	BUSHING, RBS, V-423, BRONZE	4230-2840-320	1	BRONZE
A4	PLUG, PIPE, 1/8" NPT, CARBON STEEL/ZINC PLATED	PLUG-013NSH-230	1	STEEL
A5	STUD, DOUBLE END, 5/8"-11 X 3", CARBON STEEL/ZINC PLATED	T09C625C00WA2A2	2	STEEL
A6	NUT, HEX, 5/8"-11, CARBON STEEL/ZINC PLATED	N04C625562WA2A2	6	STEEL
A7	GASKET, RBS, V-423, INTERFACE TS-9003	4230-2930-950	1	INTERFACE TS-9003
A8	PLUG, PIPE, 3/4" NPT, CARBON STEEL/ZINC PLATED	PLUG-075NSH-230	2	STEEL
A9	BUSHING, STATIONARY THRUST, V-423, BRONZE	4230-4831-320	1	BRONZE
C1	CASE, ASM, JACKETED, V-423, 5" ANSI, CAST IRON (INCLUDES C2 THRU C10)	4230-3031-110	1	CAST IRON
C2	CASE, JACKETED, G/V-423, 5" ANSI, CAST IRON	4230-3131-110	1	CAST IRON
C3	PLUG, PIPE, 3/8" NPT, CARBON STEEL/ZINC PLATED	PLUG-038NSH-230	4	STEEL
C4	PLUG, PIPE, 1-1/2" NPT, CARBON STEEL/ZINC PLATED	PLUG-150NSH-230	2	STEEL
C5	PLUG, PIPE, 2" NPT, CARBON STEEL/ZINC PLATED	PLUG-200NSH-230	1	STEEL
C6	STUD, DOUBLE END, 5/8"-11 X 2-1/2", CARBON STEEL/ZINC PLATED	T09C625B50WA2A2	6	STEEL
	STUD, DOUBLE END, 5/8"-11 X 2-1/2", CARBON STEEL/ZINC PLATED	T09C625B50WA2A2	8	STEEL
C7	FOOT, CASE, V-254/423, CARBON STEEL	2540-3400-230	1	STEEL
C8	SCREW, CAP, HEX, 5/8"-11 X 3/4", CARBON STEEL/ZINC PLATED	S01C625750WA2A4	4	STEEL
C9	STUD, DOUBLE END, 3/4"-10 X 3", CARBON STEEL/ZINC PLATED	T09C750C00WA2A2	16	STEEL
C10	NUT, HEX, 3/4"-10, CARBON STEEL/ZINC PLATED	N04C750625WA2A2	16	STEEL
D1	ROTOR/SHAFT, ASM, V-423, A, DUCTILE IRON/CARBON STEEL	4230-4040-121	1	DUCTILE IRON/STEEL
	ROTOR/SHAFT, ASM, V-423, B, DUCTILE IRON/CARBON STEEL	4230-4041-121	1	DUCTILE IRON/STEEL
	ROTOR/SHAFT, ASM, V-423, C, DUCTILE IRON/CARBON STEEL	4230-4042-121	1	DUCTILE IRON/STEEL
D2	BUSHING, ROTATING THRUST, V-423, HARDENED STEEL	4230-4830-370	1	HARDENED ALLOY STEEL
E1	GEAR, IDLER, ASM, G/V-423, DUCTILE IRON/BRONZE	4230-5010-121	1	DUCTILE/BRONZE
E2	GEAR, IDLER, G/V-423, DUCTILE IRON	4230-5100-121	1	DUCTILE
E3	BUSHING, IDLER, G/V-423, BRONZE	4230-5800-320	1	BRONZE
F1	HEAD, ASM, G/V-423, CAST IRON/HARDENED STEEL (INCLUDES F2 THRU F8)	4230-6010-110	1	CAST IRON/STEEL
	HEAD, ASM, JACKETED, G/V-423, CAST IRON/HARDENED STEEL	4230-6030-110	1	CAST IRON/STEEL
F2	HEAD, G/V-423, CAST IRON	4230-6110-110	1	CAST IRON
	HEAD, JACKETED, G/V-423, CAST IRON	4230-6130-110	1	CAST IRON
F3	PIN, IDLER, G/V-423, HARDENED STEEL	4230-6200-231	1	HARDENED STEEL
F4	PLUG, PIPE, 1/8" NPT, CARBON STEEL/ZINC PLATED	PLUG-013NSH-230	1	STEEL
F5	PLUG, PIPE, 1/8" NPT, CARBON STEEL/ZINC PLATED	PLUG-013NSH-230	1	STEEL
F6	GASKET, BRACKET/HEAD, V-254/423, .015, INTERFACE TS-9003	2540-6900-950	2	INTERFACE TS-9003
F7	GASKET, HEAD, V-254/423, .005, HI TEMP GRAPHITE	2540-6901-952	1	GRAPHITE 2010B
F8	NUT, HEX, 5/8"-11, CARBON STEEL/ZINC PLATED	N04C625562WA2A2	8	STEEL
F9	PLUG, PIPE, 1-1/2" NPT, CARBON STEEL/ZINC PLATED	PLUG-150NSH-230	1	STEEL
G1	VALVE, COVER ASM, V-254/423, STAINLESS STEEL/CARBON STEEL (INCLUDES G2, G13 THRU G15)	2540-7000-230	1	STEEL
	VALVE, ASM, V-254/423, 60/70 PSI, CAST IRON (INCLUDES G2 THRU G16)	2540-7001-110	1	CAST IRON
	VALVE, ASM, V-254/423, 71/75 PSI, CAST IRON (INCLUDES G2 THRU G9 and G12 THRU 17)	2540-7002-110	1	CAST IRON
	VALVE, ASM, JACKETED, V-254/423, 60/70 PSI, CAST IRON (INCLUDES G2 THRU G16)	2540-7031-110	1	CAST IRON
	VALVE, ASM, JACKETED, V-254/423, 71/75 PSI, CAST IRON (INCLUDES G2 THRU G9 and G12 THRU 17)	2540-7032-110	1	CAST IRON
G2	VALVE, BODY, V-254/423, CAST IRON	2540-7100-110	1	CAST IRON
	VALVE, BODY, JACKETED, V-254/423, CAST IRON	2540-7130-110	1	CAST IRON
	VALVE, COVER, V-254/423, CARBON STEEL	2540-7101-230	2	STEEL
G3	GASKET, VALVE, BONNET, G1-133/222, V-133/254/423, KLINGERSIL C-4401	1330-7910-951	1	KLINGERSIL C-4401
G4	VALVE, BONNET, G1-133/222, V-133/254/423, CAST IRON	1330-7200-110	1	CAST IRON
G5	GASKET, VALVE, CAP, G1-133/222, V-133/254/423, KLINGERSIL C-4401	1330-7920-951	1	KLINGERSIL C-4401
G6	VALVE, CAP, G1-133/222, V-133/254/423, CAST IRON	1330-7300-110	1	CAST IRON
G7	VALVE, ADJ SCREW, G1-133/222, V-133/254/423, STAINLESS STEEL	1330-7700-255	1	STAINLESS STEEL
G8	VALVE, LOCK NUT, G1-133/222, V-133/254/423, STAINLESS STEEL	1330-7710-255	1	STAINLESS STEEL
G9	VALVE, SPRING GUIDE, G1-133/222, V-133/254/423, STAINLESS STEEL	1330-7500-250	1	STAINLESS STEEL
G11	VALVE, SPRING, V-423 (70 PSI)	1330-7602-250	1	STAINLESS STEEL

Item	Description	V2-423	Quantity	Material
G12	VALVE, POPPET, G1-133/222, V-133/254/423, CAST IRON	1330-7400-110	1	CAST IRON
G13	STUD, DOUBLE END, 7/16"-14 X 1-1/2", CARBON STEEL/ZINC PLATED	T09C438A50WA2A2	12	STEEL
G14	NUT, HEX, CENTERLOCK, 7/16"-14, CARBON STEEL/ZINC PLATED	N04C438375WA2A2	12	STEEL
G15	GASKET, VALVE, V-254/423, INTERFACE TS-9003	2540-7900-950	2	INTERFACE TS-9003
G16	PLUG, PIPE, 3/4" NPT, CARBON STEEL/ZINC PLATED	PLUG-075NSH-230	3	STEEL
G17	VALVE, SPRING, V2-423 (75 PSI)	1330-7601-250	1	STAINLESS STEEL
H1	GLAND, PACKING, V-423, CAST IRON	4230-8230-110	1	CAST IRON
H2	NUT, HEX, 5/8"-11, CARBON STEEL/ZINC PLATED	N04C625562WA2A2	2	STEEL
H3	PACKING, ASM, G1-133/222, V-423, 7 RINGS, PTFE-GRAPHITE	1330-8100-925K	7	PTFE-GRAPHITE
	PACKING, ASM, G1-133/222, V-423, 7 RINGS, WEDGE PTFE-GRAPHITE	4230-8102-932	7	VARIOUS
H4	WASHER, PACKING RETAINING, G1-133/222, V-423, STAINLESS STEEL	1330-8150-250	1	STAINLESS STEEL
H5	SEAL, TRIPLE LIP SEAL, V-423, SIL CARBIDE/FFKM/PTFE	4230-8002-929	1	TEFLON/SIC/FFKM
	SEAL, TRIPLE LIP SEAL, V-423, SIL CARBIDE/TFE/P/PTFE	4230-8002-933	1	TEFLON/SIC/TFE/P





PSG Grand Rapids  
1809 Century Avenue SW  
Grand Rapids, MI 49503 USA  
P: +1 (616) 241-1611 • F: +1 (616) 241-3752  
info@blackmer.com  
blackmer.com



Where Innovation Flows

---

PSG® reserves the right to modify the information and illustrations contained in this document without prior notice. This is a non-contractual document. 05-2018