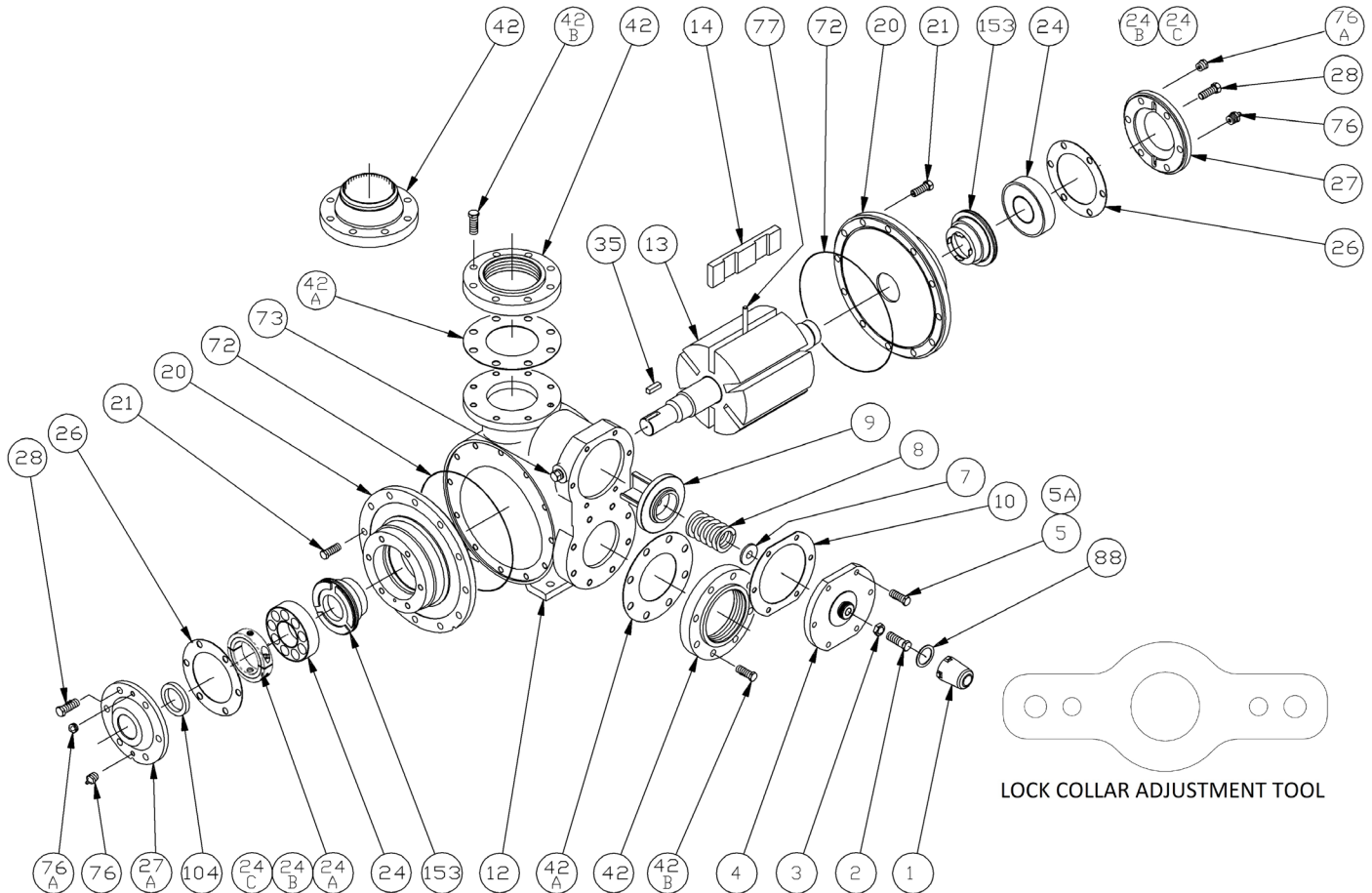


BLACKMER PARTS LIST

PUMP MODEL: TX4A

Keep with Instructions 201-A00 for Installation, Operation and Maintenance

Section	201
Effective	June 2023
Replaces	Jan 2012



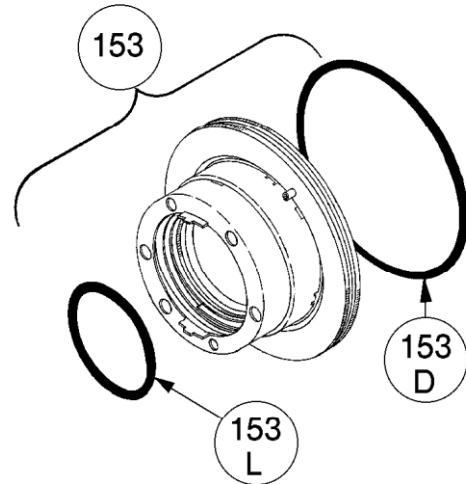
Ref. No.	Description	Parts Per Pump	Part No.	Ref. No.	Description	Parts Per Pump	Part No.
1	Cap – Relief Valve (R/V)	1	413957	24C	Jam Nut	4	¹ 922923
2	Adjusting Screw – R/V	1	436307	26	Gasket – Bearing Cover	2	¹ 386950
3	Locknut – Adjusting Screw	1	436355	27	Bearing Cover – Outboard	1	041905
4	Cover – R/V	1	411904	27A	Bearing Cover – Inboard	1	041903
5	Capscrew – R/V Cover	5	920351	28	Capscrews – Bearing Cover	12	920491
5A	Capscrew w / Hole – R/V Cover	1	920348	35	Key – Shaft, Square	1	^{1,2} 909149
7	Spring Guide – R/V	1	426355	42	Flange – 4" NPT	1-2	651900
8	Spring, Steel – R/V (35-50 psi)	1	476303		Flange – 4" Weld		651905
	Spring, Steel – R/V (51-75 psi)		476310	42A	Gasket – Flange	2	¹ 381903
	Spring, Steel – R/V (76-125 psi)(Std.)		476305	42B	Capscrew – Flange	16	920532
9	Valve – R/V (Std.)	1	456315	72	O-Ring – Head (FKM)	2	¹ 702024
	Valve – R/V (Nickel Plated)		456300		O-Ring – Head (Buna-N)		¹ 702023
					O-Ring – Head (PTFE)		702093
10	Gasket – R/V Cover	1	¹ 531903	73	Gage Plug	2	908198
12	Cylinder	1	021906	76	Grease Fitting	2	317815
13	Rotor & Shaft	1	261950	76A	Grease Relief Fitting	2	701992
14	Vane – Duravane	6	¹ 091924	77	Push Rod	3	¹ 121905
20	Head	2	031908	88	Gasket – R/V Cap	1	¹ 533908
21	Capscrews – Head	24	920510	104	Grease Seal	1	¹ 904190
24	Ball Bearing	2	¹ 903182		Kit – Maintenance, FKM		898959
24A	Lock Collar – Bearing	2	¹ 721937		Kit – Maintenance, Buna-N		898953
24B	Setscrew	4	¹ 922104		Lock Collar Adjustment Tool		903099

¹ Included in Maintenance Kit

² Maintenance Kit also includes Woodruff Key 909135 used previously.

MECHANICAL SEALS – TX4A MODELS

REF. NO.	PART NAME	PARTS PER PUMP	PART NO.
153	Mechanical Seal Complete - Cast Iron Stationary Seat, Carbon Seal Face w/ FKM O-Rings. (IVCV)	2	1 336982
	Mechanical Seal Complete – Cast Iron Stationary Seat, Carbon Seal Face, Buna-N O-Rings. (INCN)		1 336958
	Mechanical Seal Complete - Cast Iron Stationary Seat, PTFE O-Ring, Carbon Seal Face w/ PTFE Seal Ring. (IACT)		331973
	Mechanical Seal Complete - Cast Iron Stationary Seat, Bronze Seal Face w/ FKM O-Rings. (IVBV)		336984
153D	O-Ring - Stationary (FKM)	2	711932
	O-Ring - Stationary (Buna-N)		701945
	O-Ring - Stationary (PTFE)		702090
153L	O-Ring - Rotating (FKM)	2	701967
	O-Ring - Rotating (Buna-N)		701933
	Seal Ring - Rotating (PTFE)		**



¹ Included in Maintenance Kit

** PTFE Rotating Seal Ring is not available as a separate part.

