

BLACKMER PARTS LIST

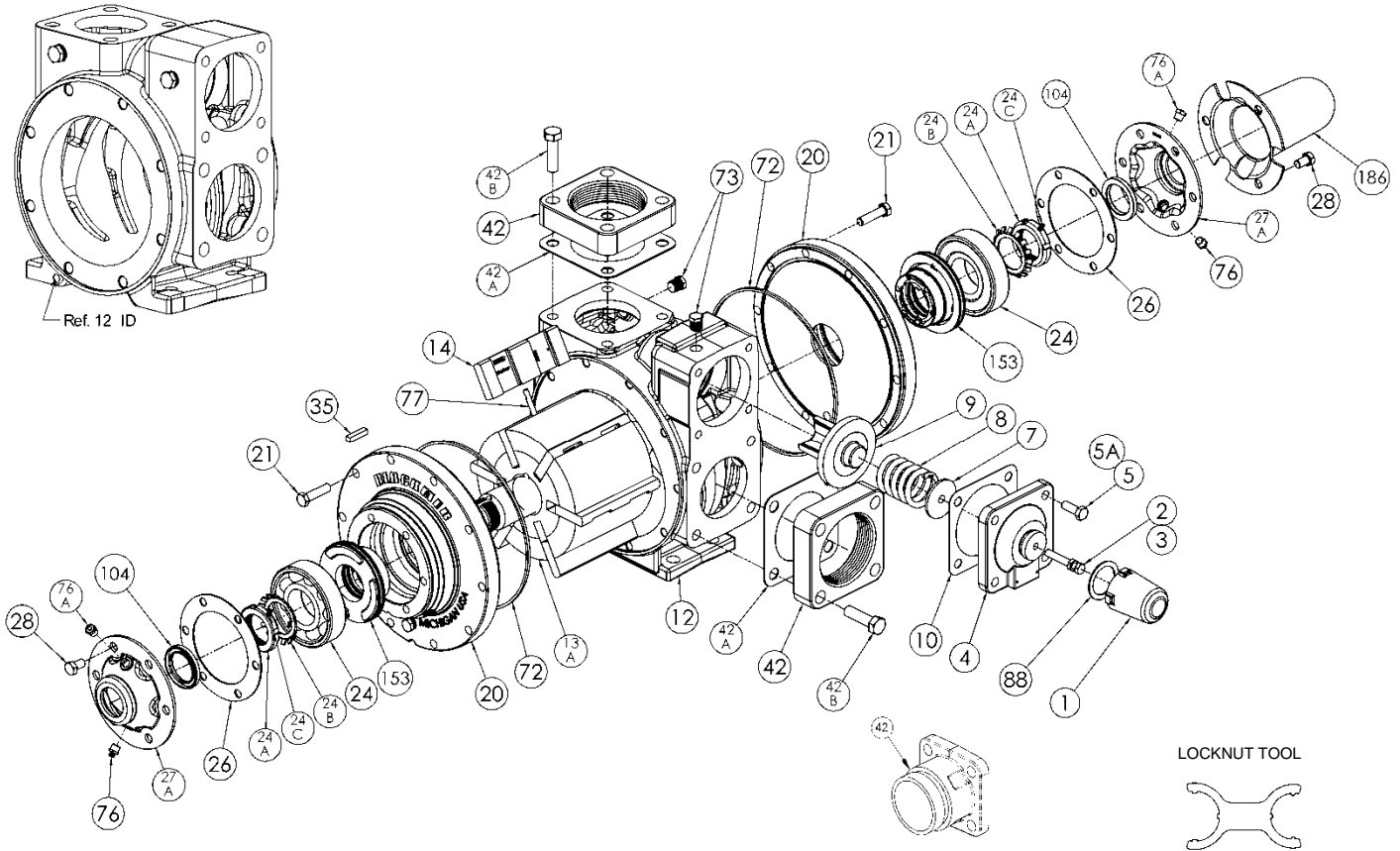
PUMP MODEL: TXD1230A

961881
Page 1 of 2

PARTS LIST
201-D04

Keep with Instructions 201-D00 for Installation, Operation and Maintenance

Section	201
Effective	Nov 2015
Replaces	Feb 2015



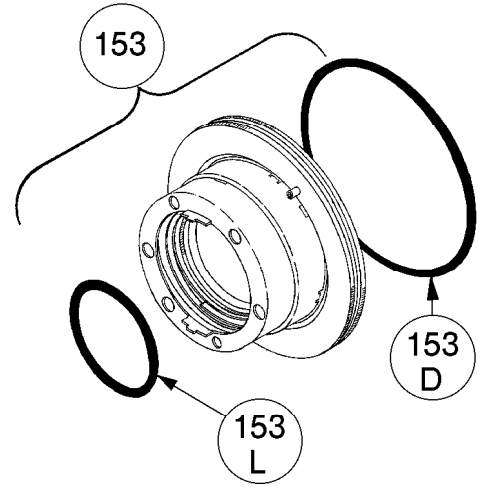
Ref. No.	Description	Parts Per Pump	Part No.	Ref. No.	Description	Parts Per Pump	Part No.
1	Cap - Relief Valve (R/V)	1	413957	24B	Lockwasher - Bearing	2	¹ 903524
2	Adjusting Screw - R/V	1	431808	24C	Setscrew - Locknut (in 24A)	2	924060
3	Locknut - Adjusting Screw	1	922923	26	Gasket - Bearing Cover	2	¹ 381817
4	Cover - R/V	1	411807	27A	Bearing Cover	2	041815
5	Capscrew - R/V Cover	3	920331	28	Capscrews - Bearing Cover	12	920285
5A	Capscrew w / Hole - R/V Cover	1	920330	35	Key - Shaft	1	¹ 909178
7	Spring Guide - R/V	1	421805	42 -	Flanges, Flange Gaskets / O-rings,		See Backside
8	Spring - R/V (51-110 psi)(Std.)	1	471806	42C	and Flange Capscrews		
	Spring - R/V (111-125 psi)		471809	72	O-Ring - Head (FKM)	2	¹ 711938
9	Valve - R/V (Std.)	1	451807		O-Ring - Head (Buna-N)		701944
	Valve - R/V (Nickel Plated)		451808	73	Gage Plug	2	908198
10	Gasket - R/V Cover	1	¹ 531803	76	Grease Fitting	2	317815
12	Cylinder (Note Series 1200 ID mark)	1	021880	76A	Grease Relief Fitting	2	701992
13A	Rotor & Shaft Asy. - Double Ended ²	1	261881	77	Push Rod	3	¹ 125110
14	Vane - Duravane	6	¹ 091819	88	Gasket - R/V Cap	1	¹ 533908
20	Head	2	031815	104	Grease Seal	2	¹ 331908
21	Capscrews - Head	20	920369	186	Shaft Protector	1	341801
24	Ball Bearing	2	¹ 903172		Air Valve Kit - Piston Type		891728
24A	Locknut - Bearing (Includes 24C)	2	903582		Tool - Locknut		903091
					Kit - Maintenance (TXD1230A)		899182

¹ Included in Maintenance Kit ² Includes ref. Nos. 24A, 24B & 24C

MECHANICAL SEALS

REF. NO.	PART NAME	PARTS PER PUMP	PART NO.
153	Mechanical Seal Complete Cast Iron Stationary Seat, FKM O-Rings, Carbon Seal Face. (IVCV)	2	¹ 331883
	Mechanical Seal Complete Cast Iron Stationary Seat, Buna-N O- Rings, Carbon Seal Face. (INCN)		331880
153D	O-Ring - Stationary (FKM)	2	711931
	O-Ring - Stationary (Buna-N)		701936
153L	O-Ring - Rotating (FKM)	2	701962
	O-Ring - Rotating (Buna-N)		711912

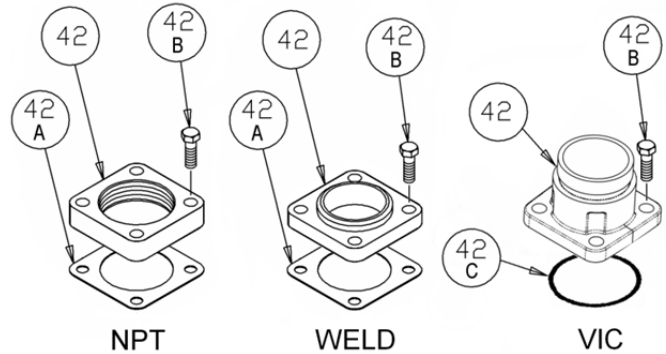
¹ Included in Maintenance Kit



FLANGES

REF. NO.	PART NAME	PARTS PER PUMP	PART NO.
42	Flange – 3" NPT	1 – 2	651803
	Flange – 3" Weld		655102
	Flange – 3" Victaulic		655120
42A	Gasket – Flange, NPT and Weld	0 – 2	¹ 381816
42B	Capscrews – NPT Flange	4 – 8	920532
	Capscrews – Weld & Victaulic Flange		920510
42C	O-Ring – Victaulic Flange (FKM)	0 – 2	711931
	O-Ring – Victaulic Flange (Buna-N)		702002

¹ Included in Maintenance Ki



OPTIONAL HYDRAULIC MOTOR ADAPTER

REF. NO.	PART NAME	PARTS PER PUMP	PART NO.
	Hydraulic Motor Adapter Kit *		895140
26A	Gasket – Hydraulic Motor Adapter	1	381817
28A	Capscrew – Hydraulic Motor Adapter / Head	6	920369
34	Coupling w/ Setscrew – for 1.25" straight key hydraulic motor	1	906967
35	Key – Coupling	1	909184
76	Grease Fitting	1	317815
76A	Grease Relief Fitting	1	701992
135	Hydraulic Motor Adapter – SAE A Flange	1	041831
135A	Capscrew – Adapter / Motor	2	920510

