

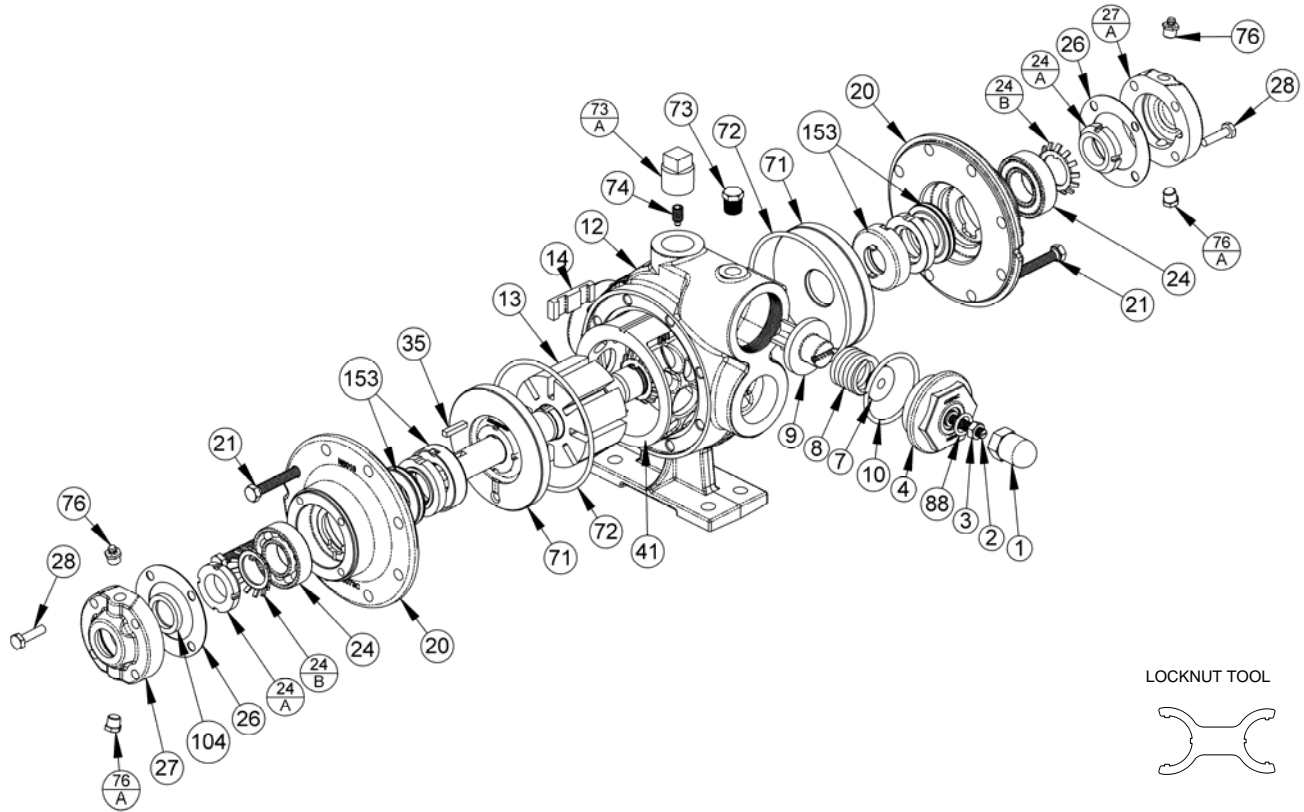
BLACKMER PARTS LIST

PUMP MODELS: SGL1.25A, SGRL1.25A, SGL1.5A

Keep with Instructions 801-A00 for Installation, Operation and Maintenance

962326 **PARTS LIST**
Page 1 of 2 **801-A01**

Section 801
Effective Aug 2014
Replaces Aug 2011



Ref. No.	Description	Parts per Pump	Part No.	Ref. No.	Description	Parts per Pump	Part No.
1	Relief Valve (R/V) Cap	1	413200	27	Bearing Cover (Inboard)	1	043070
2	R/V Adjusting Screw	1	433909	27A	Bearing Cover (Outboard)	1	043071
3	R/V Adjusting Screw Locknut	1	922923	28	Bearing Cover Capscrews	8	920080
4	R/V Cover	1	413076	35	Shaft Key ³	1	909152
7	R/V Spring Guide	1	423955		Liner – SGRL1.25A		183019
8	R/V Spring – (51 – 80 psi) (std)	1	471420	41	Liner – SGL1.25A	1	² 183020
	R/V Spring – (81 – 150 psi)		471428		Liner – SGL1.5A		² 183310
9	R/V Valve	1	453077	71	Disc	2	² 063075
	R/V Valve – Nickel Plated		452300		O-Ring Head (HNBR) (std)		¹ 702314
10	O-Ring R/V Cover (HNBR) (std)	1	¹ 702306	72	O-Ring Head (FKM)	2	701991
	O-Ring R/V Cover (FKM)		701970		O-Ring Head (PTFE)		702066
	O-Ring R/V Cover (PTFE)		702084		O-Ring Head (Neoprene)		702005
	O-Ring R/V Cover (Neoprene)		711987	73	Gage Plug (1/4" NPT)	1	908198
12	Casing – SGL1.25, SGRL1.25	1	013075	73A	Gage Plug (3/4" NPT)	1	908225
	Casing – SGL1.5		013376	74	Liner Setscrew	1	² 922088
13	Rotor & Shaft (Includes Ref. No's 24A & 24B)	1	² 262300	76	Grease Fitting	2	317815
14	Duravane (std)	8	¹ 093088	76A	Grease Relief Fitting	2	701992
	Laminate Vane		093089		O-Ring R/V Cap (HNBR) (std)		¹ 702300
20	Head	2	033073	88	O-Ring R/V Cap (FKM)	1	701908
21	Head Capscrews	16	920276		O-Ring R/V Cap (PTFE)		702074
24	Ball Bearing	2	¹ 903114		O-Ring R/V Cap (Neoprene)		702006
24A	Bearing Locknut	2	² 903534	104	Grease Seal	1	¹ 331927
24B	Bearing Lockwasher	2	¹ 903533	—	Tool - Locknut	—	903090
26	Bearing Cover Gasket	2	¹ 383075	—	Kit - Maintenance	—	898733
				—	Kit - Rebuild – SGRL1.25A	—	898832
				—	Kit – Rebuild – SGL1.25A	—	898833
				—	Kit – Rebuild – SGL1.5A	—	898834

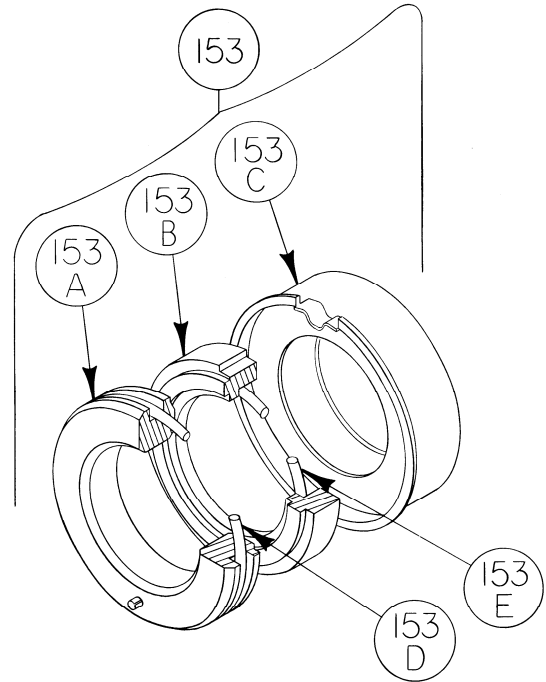
¹ Included in Maintenance Kits and Rebuild Kits

² Included in Rebuild Kits.

³ Previous versions used Woodruff Key 901925.

MECHANICAL SEAL

Ref. No.	Part Name	Parts Per Pump	Part No.
153	Mechanical Seal Assembly (STD) Hardened Steel Stationary Seat, Custom Carbon Rotating Seal Face, HNBR O-Rings (SJCJ)	2	¹ 332602
	Mechanical Seal Assembly Hardened Steel Stationary Seat, Custom Carbon Rotating Seal Face, FKM O-Rings (SVCV)		332603
	Mechanical Seal Assembly Hardened Steel Stationary Seat, Custom Carbon Rotating Seal Face, Neoprene O-Rings (SPCP)		332606
	Mechanical Seal Assembly Hardened Steel Stationary Seat, Custom Carbon Rotating Seal Face, PTFE & Kalrez® O-Rings (SACK)		332604
153A	Stationary Seat (Hardened Steel)	2	**
153B	Rotating Seal Face (Custom Carbon)	2	**
153C	Jacket Assembly	2	**
153D	O-Ring – Stationary (HNBR) (STD)	2	702304
	O-Ring – Stationary (FKM)		711908
	O-Ring – Stationary (Neoprene)		711985
	O-Ring – Stationary (PTFE)		702076
153E	O-Ring – Rotating (HNBR) (STD)	2	702301
	O-Ring – Rotating (FKM)		701971
	O-Ring – Rotating (Neoprene)		702008
	O-Ring – Rotating (Kalrez®)		702172



¹ Included in Maintenance Kits and Rebuild Kits
 Mechanical Seal (Ref No. 153) is only sold as a complete assembly.
 ** Ref. No.'s 153/A, 153/B, 153/C are not available as separate parts.
 Kalrez® is a registered trademark of DuPont Performance Elastomers.

