

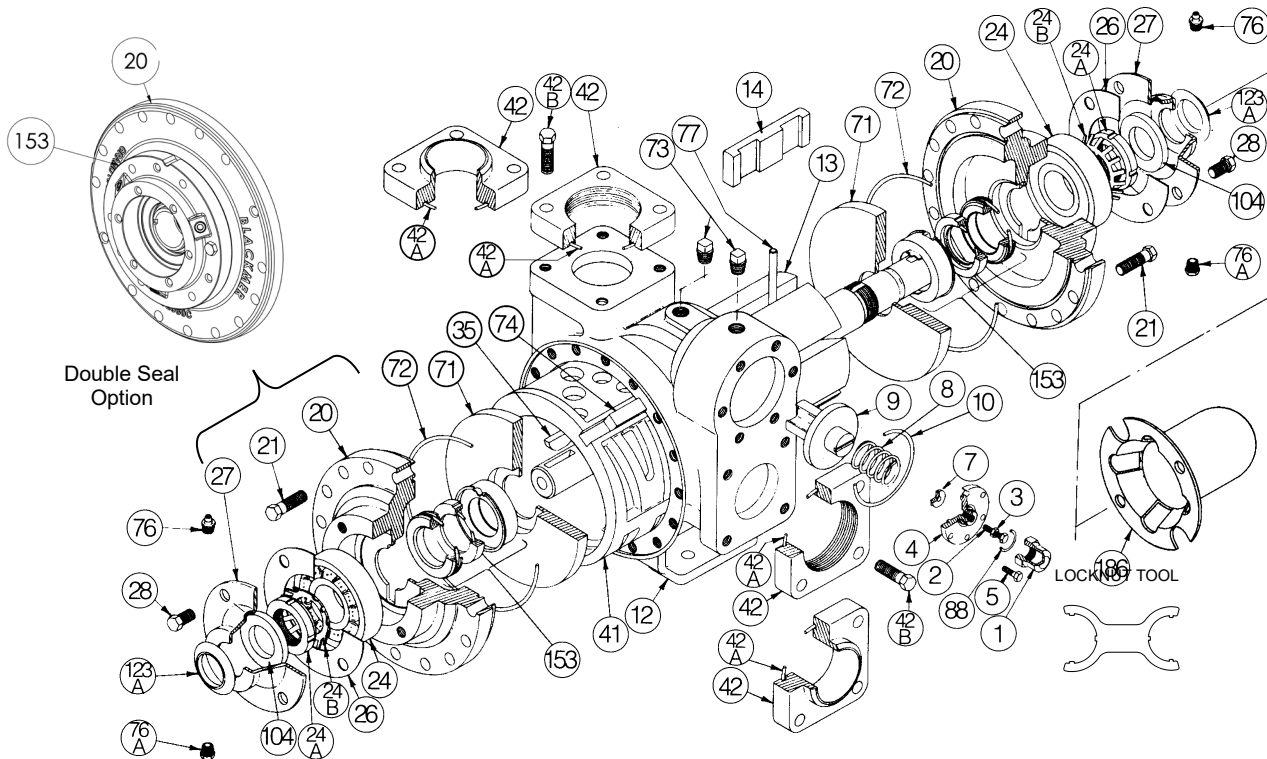
BLACKMER PARTS LIST

PUMP MODELS: SGLD2, SGLD3, SGLWD3

964426 **PARTS LIST**
Page 1 of 5 **801-B01**

Keep with Instructions 801-B00 for Installation, Operation and Maintenance

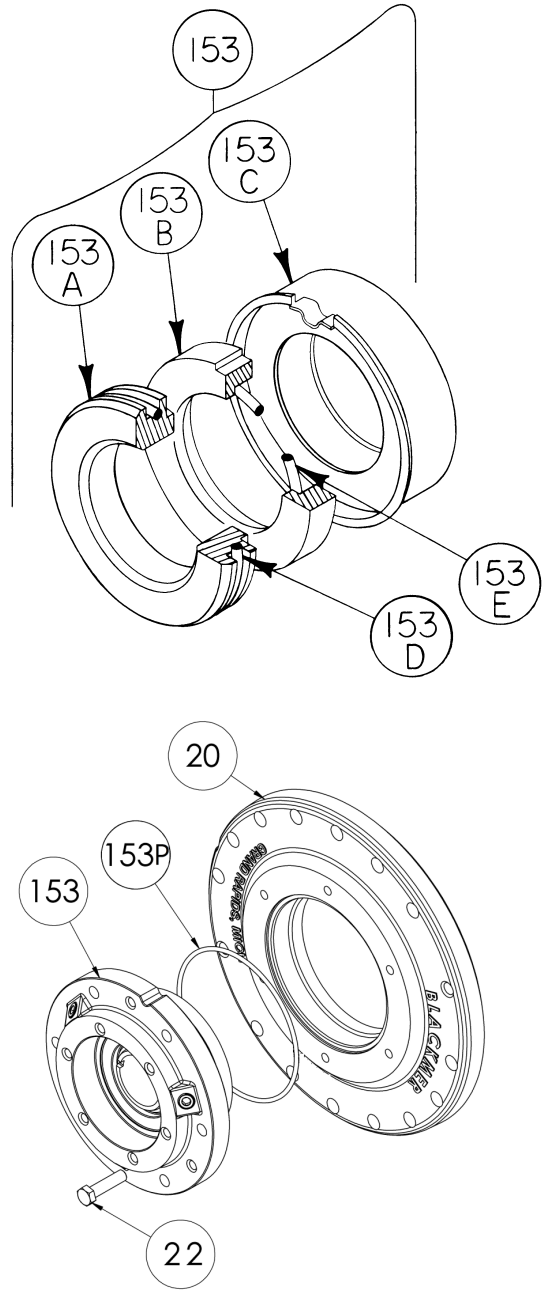
Section | 801
Effective | Sept 2023
Replaces | Oct 2022



Ref. No.	Description	Parts per Pump	Size 2 Part No.	Size 3 Part No.	Ref. No.	Description	Parts per Pump	Size 2 Part No.	Size 3 Part No.	
1	Relief Valve (R/V) Cap	1	414402	414402	42	NPT Flange	2	654401	655112	
2	R/V Adjusting Screw	1	433905	435109		Weld Flange		654405	655102	
3	R/V Adjusting Screw Locknut	1	922923	922923		O-Ring Flange (HNBR) (std.)		¹ 702309	¹ 702312	
4	R/V Cover	1	414408	415109	42A	O-Ring Flange (FKM)	2	702086	711931	
5	R/V Cover Capscrews	6	920316	920331		O-Ring Flange (PTFE)		702078	702080	
7	R/V Spring Guide	1	424401	425109		O-Ring Flange (Neoprene)		711997	711996	
8	R/V Spring (51-75 psi) (std.)	1	471425	-	42B	Capscrew NPT Flange	8	920384	920547	
	R/V Spring (76-110 psi)		471428	-		Capscrew Weld Flange		920351	920510	
	R/V Spring (111-150 psi)		471424	-	71	Disc	2	² 064412	² 065112	
	R/V Spring (51-100 psi) (std.)		-	471621		72	O-Ring Head (HNBR) (std.)		¹ 702316	¹ 702318
	R/V Spring (101-150 psi)		-	475109		O-Ring Head (FKM)	2	702045	711938	
9	R/V Valve	1	454405	455109		O-Ring Head (PTFE)		702081	702082	
10	O-Ring R/V Cover (HNBR) (std.)	1	¹ 702308	¹ 702311		O-Ring Head (Neoprene)		702105	702013	
	O-Ring R/V Cover (FKM)		711929	701924	73	Gage Plug (1/4" NPT)	2	908198	908198	
	O-Ring R/V Cover (PTFE)		702077	702079	74	Liner Key	1	² 183991	² 185191	
	O-Ring R/V Cover (Neoprene)		711994	711995	76	Grease Fitting	2	317815	317815	
12	Casing	1	014405	015127	76A	Grease Relief Fitting	2	701992	701992	
13	Rotor & Shaft ³	1	² 264445	² 265148	77	Push Rod	3	¹ 123905	¹ 125105	
	Rotor & Shaft ^{3,4,5}		-	⁵ 265150		88	O-Ring R/V Cap (HNBR) (std.)	1	¹ 702320	¹ 702320
	Rotor & Shaft (Single Ended) ⁸		⁸ 264443	-			O-Ring R/V Cap (FKM)		701979	701979
14	Duravane (std)	6	¹ 091419	¹ 095131		O-Ring R/V Cap (PTFE)		702075	702075	
	Vane - Laminate		-	⁴ 095107			O-Ring R/V Cap (Neoprene)		711984	711984
20	Head	2	034416	035128	104	Grease Seal	2	¹ 331918	¹ 331908	
	Head (Dual Seal) ^{5,6}		-	035180		123A	Dirt Shield	2	¹ 701480	NA
21	Head Capscrews	32-40	920351	920369	186	Shaft Protector	2	341601	341801	
24	Ball Bearing	2	¹ 903156	^{1,7} 903172	-	Tool - Locknut	-	903091	903091	
24A	Bearing Locknut	2	² 903521	² 903523	-	Kit - Maintenance	-	898935	898936	
24B	Bearing Lockwasher	2	¹ 903522	¹ 903524	-	Kit - Rebuild	-	899035	899036	
26	Bearing Cover Gasket	2	¹ 383940	¹ 385125	¹ Included in Maintenance Kit and Rebuild Kit ² Included in Rebuild Kit ³ Includes Ref. Nos.24A & 24B ⁴ Available and Standard only on SGLWD3 ⁵ Required for Dual Seal, Plan 52 Option ⁷ Dual Seal uses 903166 ⁶ Required for Dual Seal, Plan 53 Option ⁸ Single Ended Shaft used for Integrated Gear Box (N15) Units					
27	Bearing Cover	2	041431	041815						
28	Bearing Cover Capscrews	8-12	920285	920285						
35	Shaft Key	1	¹ 909130	¹ 909130						
41	Liner	1	² 184405	² 185111						
	Liner (Hardened)		-	⁴ 185116						

MECHANICAL SEAL

Ref. No.	Part Name	Parts Per Pump	Size 2 Part No.	Size 3 Part No.
153	Mechanical Seal Assembly (std) Hardened Steel Stationary Seat, Custom Carbon Rotating Seal Face, HNBR O-Rings (SJCJ)	2	1 334432	1 335206
	Mechanical Seal Assembly Hardened Steel Stationary Seat, Custom Carbon Rotating Seal Face, FKM O-Rings (SVCV)		334433	335216
	Mechanical Seal Assembly Hardened Steel Stationary Seat, Custom Carbon Rotating Seal Face, Neoprene O-Rings (SPCP)		334436	335219
	Mechanical Seal Assembly Hardened Steel Stationary Seat, Custom Carbon Rotating Seal Face, PTFE and Kalrez® O-Rings (SACK)		334434	335217
	Mechanical Seal Assembly Silicon Carbide Stationary Seat, Custom Carbon Rotating Seal Face, PTFE O-Rings (LACA)		334437	335220
	Mechanical Seal Assembly Silicon Carbide Stationary Seat, Custom Carbon Rotating Seal Face, HNBR O-Rings (LJCJ)		334438	335223
	Dual Mechanical Seal Assembly, Plan 53 Custom Carbon Stationary Seats, Hardened Steel Rotating Seal Face, FKM O-Rings (CVSV)		-	332189
	Dual Mechanical Seal Assembly, Plan 52 Custom Carbon Stationary Seats, Hardened Steel Rotating Seal Face, FKM O-Rings (CVSV)		-	332188
153A	Stationary Seat	2	**	**
153B	Rotating Seal Face	2	**	**
153C	Jacket Assembly	2	**	**
153D	O-Ring – Stationary (HNBR) (std)	2	702306	702307
	O-Ring – Stationary (FKM)		701970	702015
	O-Ring – Stationary (Neoprene)		711987	702104
	O-Ring – Stationary (PTFE)		702084	711999
153E	O-Ring – Rotating (HNBR) (std)	2	702302	702305
	O-Ring – Rotating (FKM)		701980	701962
	O-Ring – Rotating (Neoprene)		711900	702007
	O-Ring – Rotating (PTFE)		702109	702110
	O-Ring – Rotating (Kalrez®)		702170	702171
153F	O-Ring – Seal Cartridge (FKM)	2	-	702059
22	Seal Cartridge Capscrew	12	-	920369
-	Kit – Rebuild, Plan 52 Seal	-	-	899052
-	Kit – Rebuild, Plan 53 Seal	-	-	899053



¹ Included in Maintenance Kit and Rebuild Kit

** Mechanical Seal Asy. (Ref. No. 153) is only sold as a complete assembly.
Ref. Nos. 153A/153B/153C/ are not available as separate replacement parts.

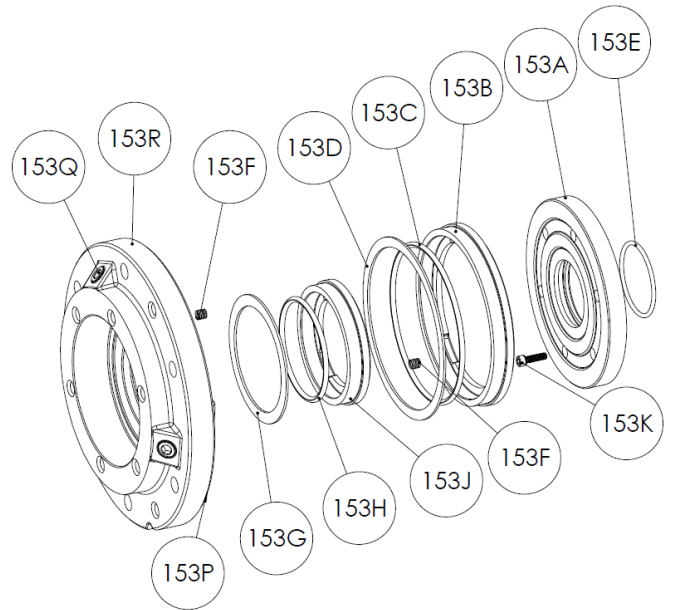
® Kalrez is a Registered Trademark of the DuPont Performance Elastomers.



MECHANICAL SEAL – DUAL SEAL

DUAL SEAL - PLAN 52

Ref. No.	Description	Parts per Seal	Part No.
153A	Rotating Seal ¹	1	332093
153B	Carbon, Outer ¹	1	332187
153C	O-ring, FKM ¹	1	701991
153D	Backer Ring, Outer	1	332085
153E	O-ring, FKM ¹	1	701962
153F	Spring ¹	27	332199
153G	Backer Ring, Inner	1	332088
153H	O-ring, FKM ¹	1	711929
153J	Carbon, Inner ¹	1	332086
153K	Sealing Capscrew ¹	6	920140
153P	O-ring, FKM ¹	1	702059
153Q	Plug	3	908192
153R	Cartridge, Seal Insert	1	332181

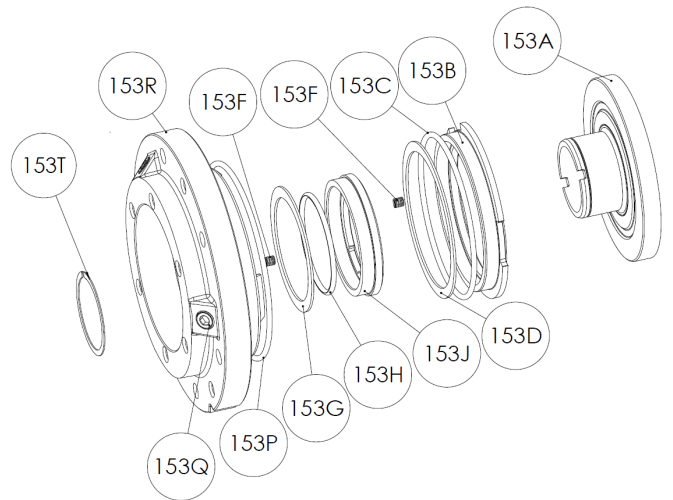


¹Included in Seal Rebuild Kit 899052

Note: For ordering Seal Rebuild Kit, consult Blackmer factory.

DUAL SEAL - PLAN 53

Ref. No.	Description	Parts per Seal	Part No.
153A	Rotating Seal Sub-Assembly ¹	1	332282
153B	Carbon, Outer ¹	1	332087
153C	O-ring, FKM ¹	1	702357
153D	Backer Ring, Outer	1	332089
153F	Spring ¹	21	332199
153G	Backer Ring, Inner	1	332088
153H	O-ring, FKM ¹	1	711929
153J	Carbon, Inner ¹	1	332086
153P	O-ring, FKM ¹	1	702059
153Q	Plug	3	908192
153R	Cartridge, Seal Insert	1	332081
153T	Snap Ring ¹	1	903590



¹Included in Seal Rebuild Kit 899053

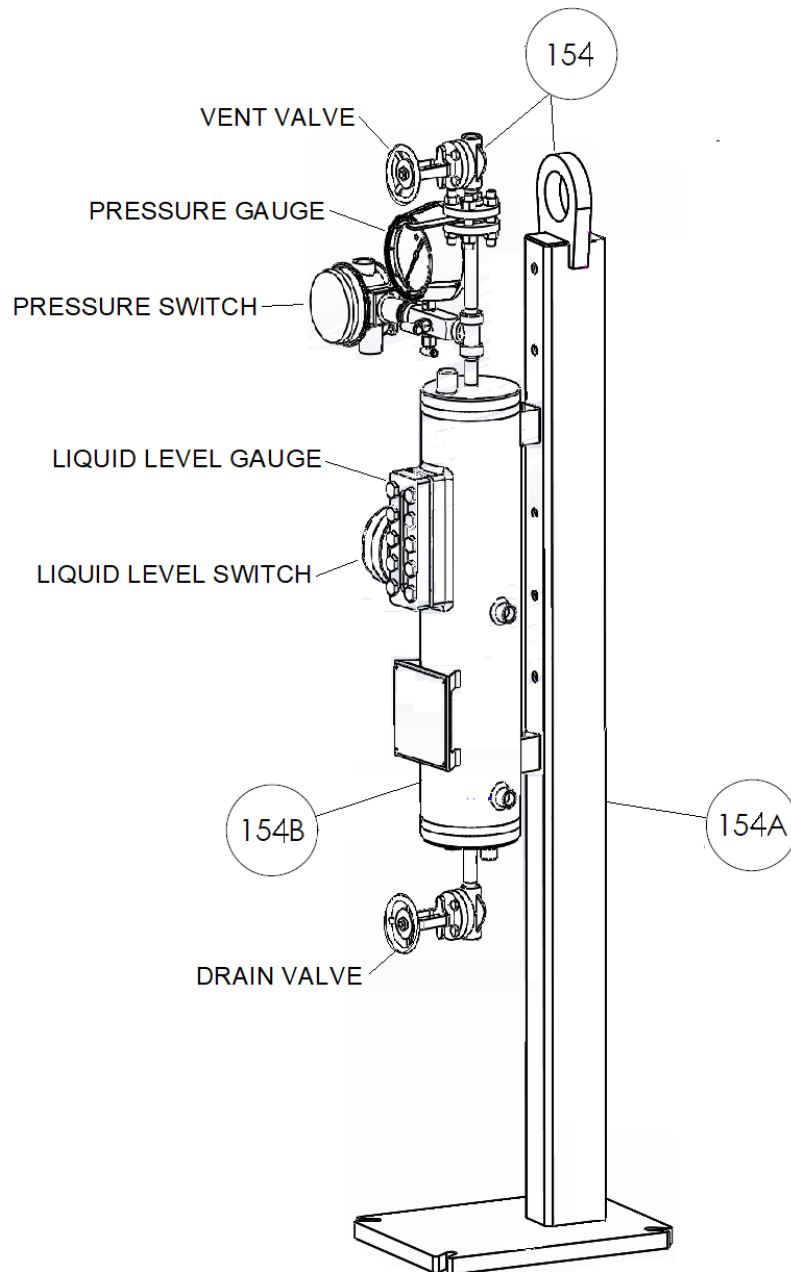
Note: For ordering Seal Rebuild Kit, consult Blackmer factory.



BARRIER FLUID SYSTEM ASSEMBLY

Ref. No.	Description	Parts per Seal	Part No.
154	BARRIER FLUID TANK ASSY	1	332172
154A	SUPPORT STAND	1	332171
154B	3 GAL SEAL POT ASSY	1	332170

Note: For ordering Seal Pot Assy, consult Blackmer factory.



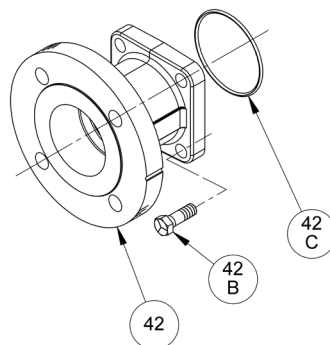
1809 Century Avenue, Grand Rapids, Michigan 49503-1530, U.S.A.
 Telephone: (616) 241-1611 / Fax: (616) 241-3752
 E-Mail: blackmer@blackmer.com / Internet: www.blackmer.com

Parts List 801-B01
 Page 4 of 5

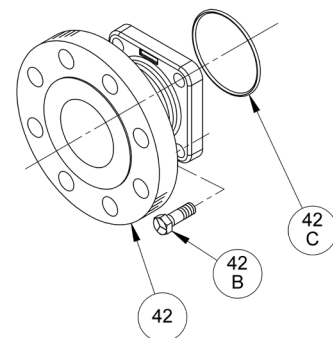
ADDITIONAL 3" FLANGE OPTIONS (Bolt on Companion Flanges)

Ref. No.	Description	Parts per Seal	Part No.
42	Flange ANSI 3" 150 lb. R.F. ¹ Flange ANSI 3" 300 lb. R.F.	2	651817 651825
42C	O-Ring, Flange – (HNBR) (STD) O-Ring, Flange – FKM O-Ring, Flange – PTFE O-Ring, Flange – Neoprene	2	702312 711931 702080 711996
42B	Flange Capscrew – ANSI Flange	8	920510

¹ ANSI 3" 150 lb. R.F. are considered Non-Catalog Offering (NCO)



ANSI 3" 150 lb. R.F.

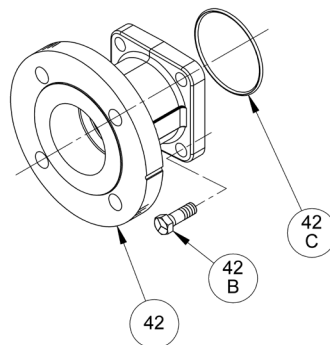


ANSI 3" 300 lb. R.F.

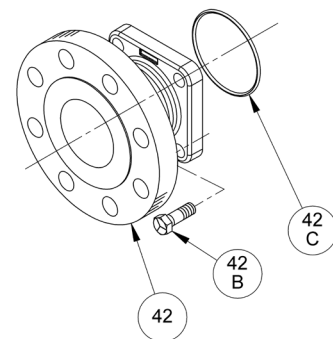
ADDITIONAL 2" FLANGE OPTIONS (Bolt on Companion Flanges)

Ref. No.	Description	Parts per Seal	Part No.
42	Flange ANSI 2" 150 lb. R.F. ¹ Flange ANSI 2" 300 lb. R.F.	2	651417 651425
42C	O-Ring, Flange – (HNBR) (STD) O-Ring, Flange – FKM O-Ring, Flange – PTFE O-Ring, Flange – Neoprene	2	702309 702086 702078 711997
42B	Capscrew ANSI – Flange	8	920351

¹ ANSI 2" 150 lb. R.F. are considered Non-Catalog Offering (NCO)



ANSI 2" 150 lb. R.F.



ANSI 2" 300 lb. R.F.

