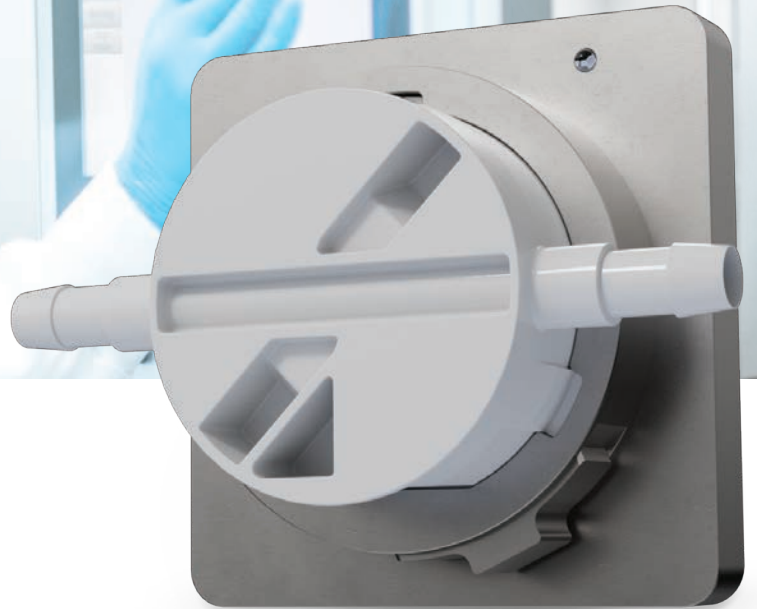


BioProTT™ FlowSU System

READY. CONNECT. FLOW.



WE'VE LISTENED. WE'VE INNOVATED. WE'VE SOLVED YOUR PAIN POINTS.

Introducing the BioProTT™ FlowSU System – an innovative flow measurement system for single-use biopharma applications.

The new system features a first-of-its-kind disposable sensor that eliminates the need for calibration and a reusable and easy-to-mount holder profile with integrated electronics.

READY

- Easy spec-in
- Easy order handling

CONNECT

- Seamless integration
- Smart connection

FLOW

- High level of features
- Low level of maintenance

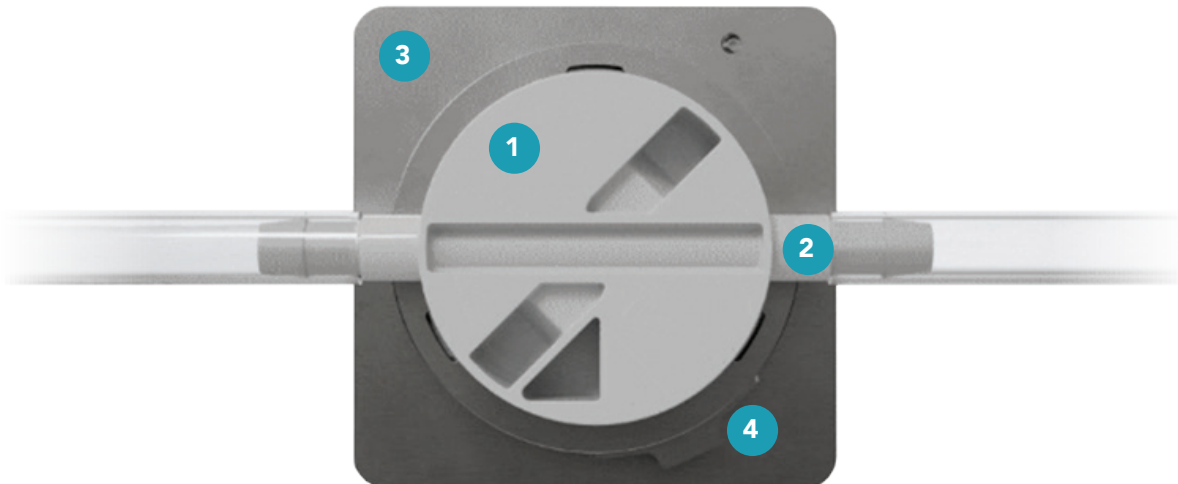
SMART & EASY FLOW MEASUREMENT INTEGRATION

SINGLE-USE PART

- 1
 - Standardized single-use sensor
 - Available in different sizes
 - Well-known ultrasonic technology inside
 - 2-in-1: Flow measurement & air-in-line detection with one sensor
 - Made of USP class VI material
- 2
 - Easy integration into manifolds with standard connection
 - Straight flow path for seamless integration and less shear stress

MULTI-USE PART

- 3
 - Panel mounted re-usable holder profile
 - Integrated electronics and Power over Ethernet (PoE)
 - Cableless connection with the sensors
 - Status LED
- 4
 - Toolless attachment with special locking technology
 - Station fits with every sensor size



READY

Easy Spec-In
Easy Order Handling

CONNECT

Seamless Integration
Smart Connection

FLOW

High Level of Features
Low Level of Maintenance

PBT-E-30000-F-01

© 2023 PSG®, a Dover company

Authorized PSG® Partner:



PSG BIOTECH

PSG Biotech | em-tec GmbH
Lerchenberg 20
86923 Finning, Germany
Tel: +49 8806 9236 0
Fax: +49 8806 9236 50
em-tec-sales@psgdover.com
psgdover.com/readyconnectflow

PSG® reserves the right to modify the information and illustrations contained in this document without prior notice. This is a non-contractual document.