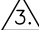


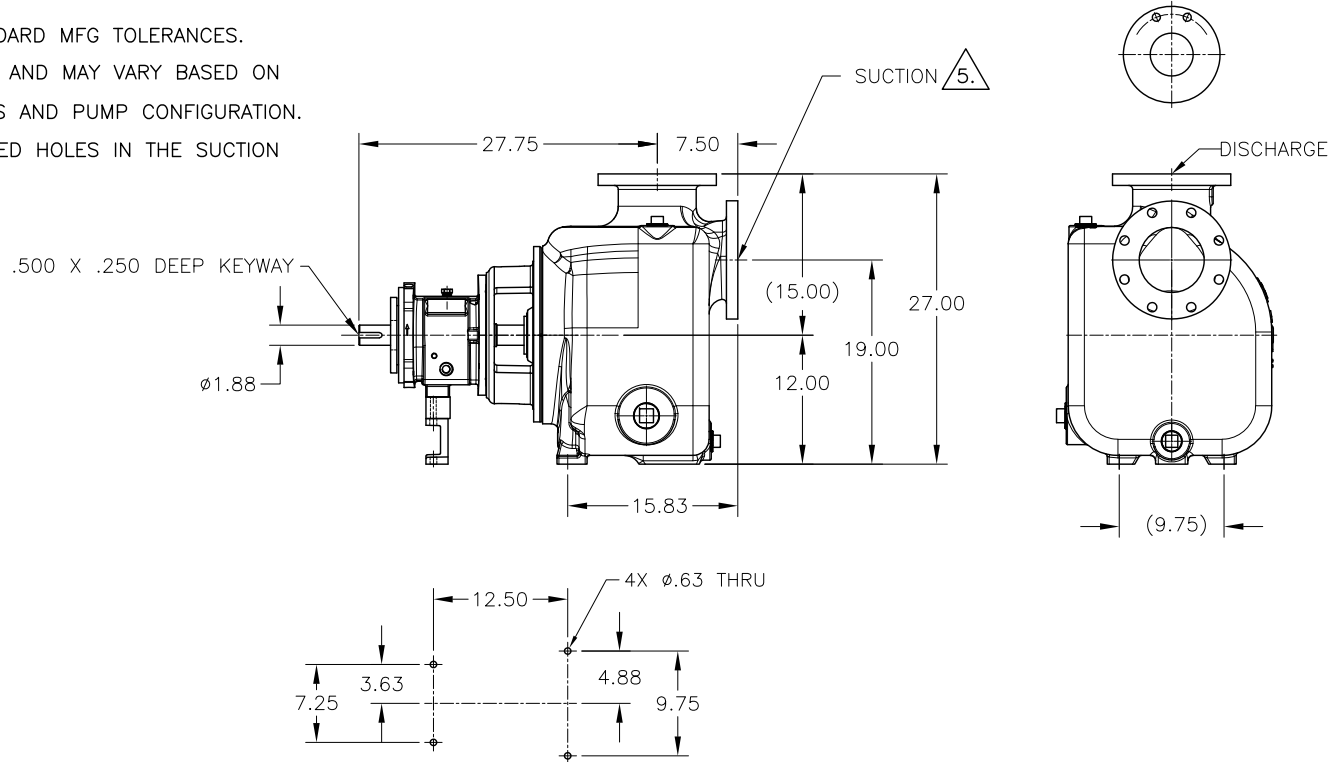


REV.	DESCRIPTION	BY	CHK.	APP.	DATE
A	RELEASED INTO PRODUCTION SEE ECN #GRT001328	-	-	-	-

NOTES: UNLESS OTHERWISE SPECIFIED

- DIMENSIONS AND TOLERANCES PER ASME Y14.5M-1994.
- \* INDICATES DIMENSIONS AND/OR FEATURES MODIFIED ON CURRENT REVISION LEVEL.
-  DIMENSIONS REFLECT STANDARD MFG TOLERANCES.
-  WEIGHTS ARE APPROXIMATE AND MAY VARY BASED ON MANUFACTURER'S MATERIALS AND PUMP CONFIGURATION.
-  THIS PUMP MAY HAVE TAPPED HOLES IN THE SUCTION FLANGE PER ASME B73.1.



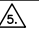
**CERTIFIED  
FOR  
CONSTRUCTION**


ONLY WHEN SIGNED

Signature \_\_\_\_\_  
Date \_\_\_\_\_  
Customer \_\_\_\_\_  
Customer P.O. # \_\_\_\_\_

OPTION ✓	AVAILABLE OPTIONS
	PUMP MATERIAL
	X4 CD4MCU SS
	OTHER
	FLANGE FACE
	FLAT FACE
	RAISED FACE

FLANGE OPTION DIMENSIONS

OPTION ✓	NOMINAL PIPE SIZE	FLANGE DIAMETER	BOLT CIRCLE DIAMETER	NO. OF BOLTS	DIAMETER OF BOLTS	BOLT HOLE	FLANGE
	6" ASME 150#						DISCHARGE
	6.00	11.00	9.50	8	0.75	0.88	
	6" ASME 150#						SUCTION
	6.00	11.00	9.50	8	0.75	0.88	
	6" ASME 300#						DISCHARGE
	6.00	12.50	10.62	12	0.75	0.88	
	6" ASME 300# (THD) 						SUCTION
	6.00	12.50	10.62	12	0.75	.750-10 UNC-2B	

 PUMP WT.- 633 LBS

DO NOT SCALE DRAWING UNLESS OTHERWISE SPECIFIED DIMENSIONS ARE IN INCHES TOLERANCES ARE:	
DECIMALS .XX ± -	
.XXX ± -	
ANGLES ± -	
SCALE 1/8	SHEET 1 OF 1



GRISWOLD PUMP COMPANY  
22069 VAN BUREN STREET  
GRAND TERRACE, CA 92313-9097  
PHONE: (909) 942-2022 / (209) 526-5555  
WWW.GRISWOLDPUMP.COM

TITLE 6 x 6 - 13, 811SP PEO, LG PF			
DRAWN BY R. ANDRADE	DATE 03/08/21	ASSY. NO.	
CHECKED BY T. VOVAN	DATE 03/09/21	DRAWING NO.	
APPROVED BY R. BEACH	DATE 3/30/21	REV. LG1886 A	