

850 SERIES – Model 8X6-14T



Model 8X6-14T – Close-Coupled Configuration

PERFORMANCE

850CC/8X6-14T/4P

Max. Flow Rate: 1,978 gpm

Max. Head: 201 ft.

Max. Working Temperature: 250° F

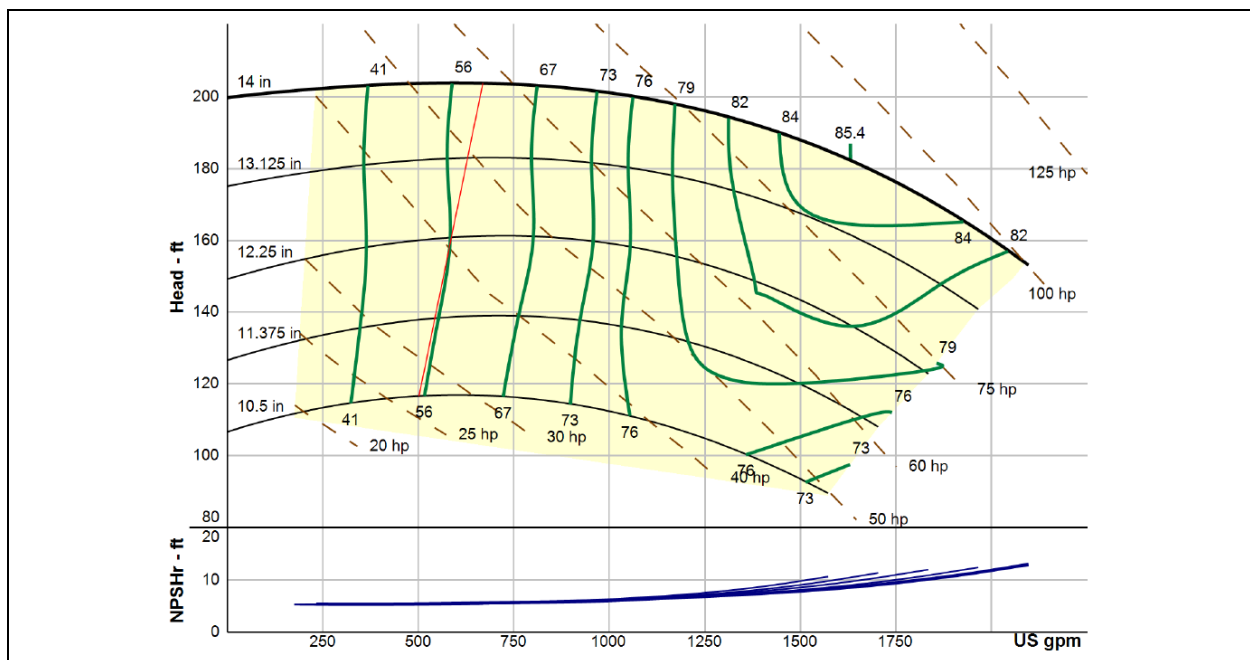
Max. Working Pressure: 175 psi

Max. Rated Speed: 1800 RPM

Max. Particle Size: 1.0" Diameter

Hydrotest Pressure: 263 psi

PERFORMANCE CURVE – 850CC/8X6-14T/4P, 1750 RPM



850 Series Model: 850CC/8X6-14T/4P

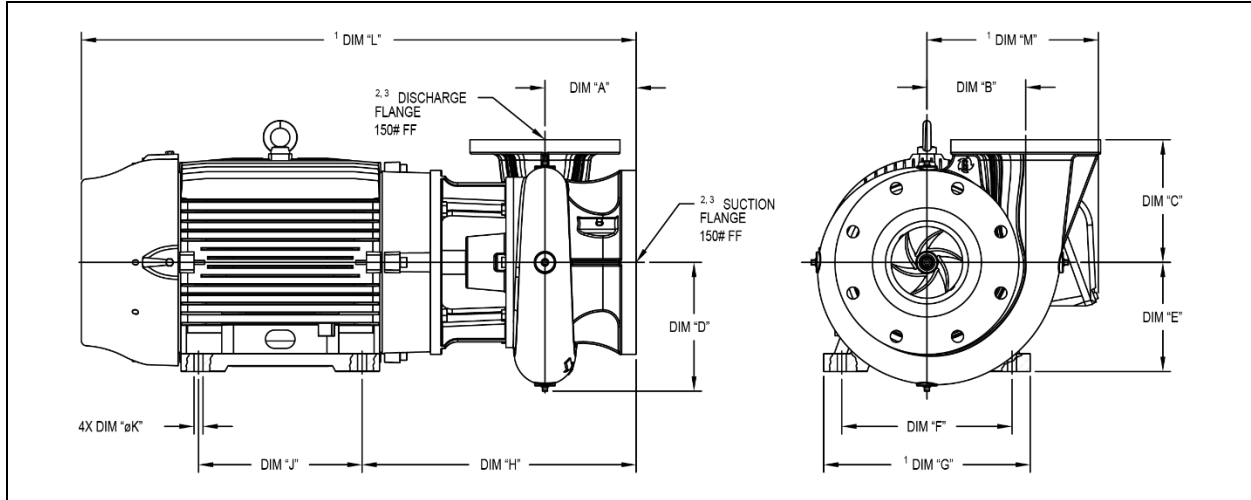
PEI_{CL} 0.95

Impeller Diameter: 14.000 in.

850 SERIES – Model 8X6-14T



DIMENSIONS (INCHES)



Motor Frame	Suction	Discharge	DIM "A"	DIM "B"	DIM "C"	DIM "D"	DIM "E"	DIM "F"	DIM "G"	DIM "H"	DIM "J"	DIM "ØK"	DIM "L"	DIM "M"
284JP	8.00	6.00	8.00	10.00	14.25	12.37	7.00	11.00	13.78	20.09	9.50	0.53	37.13	11.07
286JP	8.00	6.00	8.00	10.00	14.25	12.37	7.00	11.00	13.78	20.09	11.00	0.53	38.63	11.07
324JP	8.00	6.00	8.00	10.00	14.25	12.37	8.00	12.50	15.16	20.58	10.50	0.66	36.67	12.58
326JP	8.00	6.00	8.00	10.00	14.25	12.37	8.00	12.50	15.16	20.57	12.00	0.66	41.17	12.58
364JP	8.00	6.00	8.00	10.00	14.25	12.37	9.00	14.02	17.17	21.19	11.26	0.66	43.91	16.02
365JP	8.00	6.00	8.00	10.00	14.25	12.37	9.00	14.02	17.17	21.19	12.24	0.66	43.91	16.02
404JP	8.00	6.00	8.00	10.00	14.25	12.37	10.00	15.98	19.92	21.94	12.24	0.81	47.75	16.02
405JP	8.00	6.00	8.00	10.00	14.25	12.37	10.00	15.98	19.92	21.94	13.74	0.81	47.75	16.02

¹Dimension may vary with motor model and manufacturer

²150# Flange is dimensionally identical to a 125# Flange

³Bolt holes straddle pump centerlines

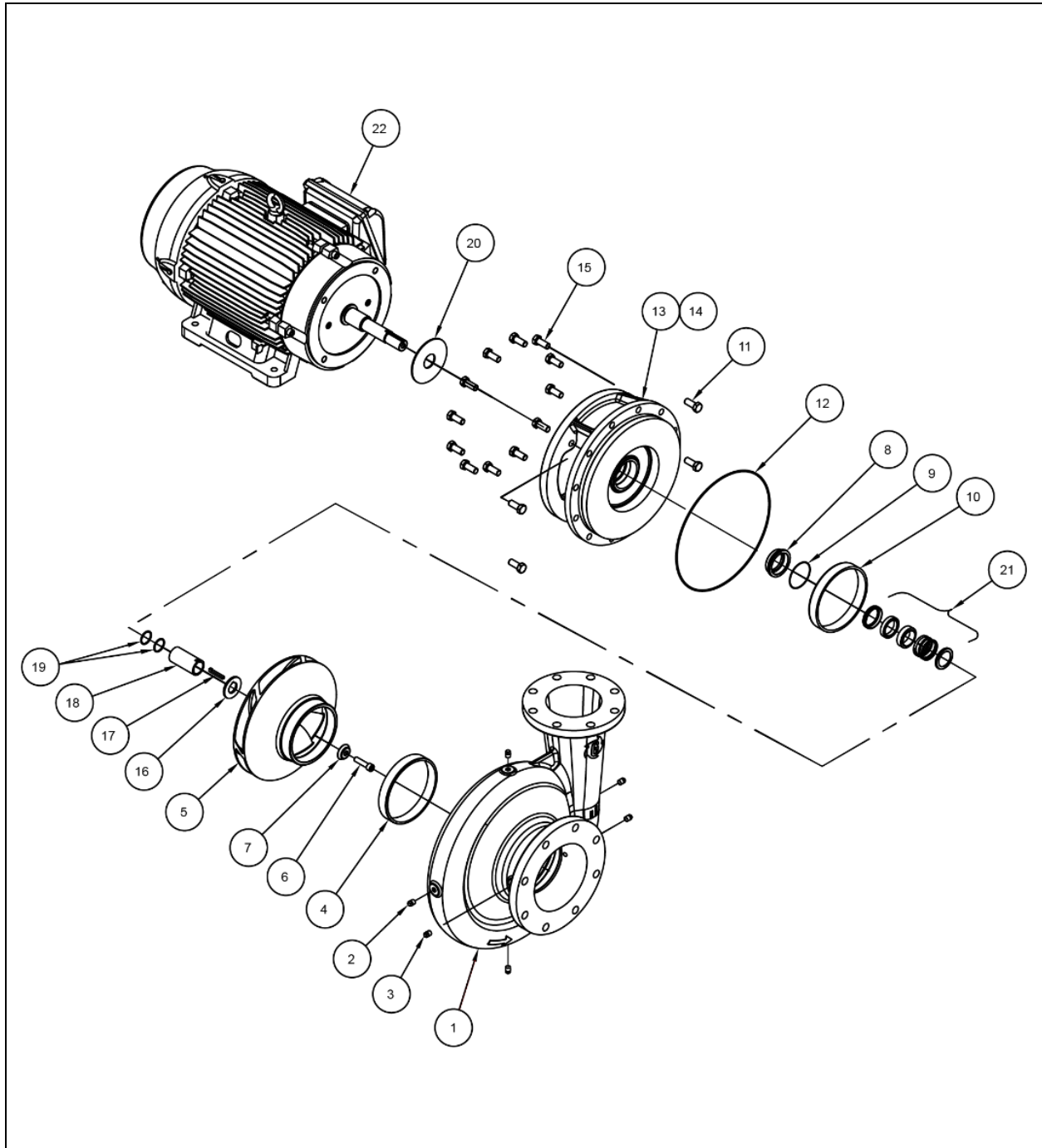
LG1839 REV. A

850 Series Model: 850CC/8X6-14T/4P	PEI_{CL} 0.95	Impeller Diameter: 14.000 in.
---	------------------------------	--------------------------------------

850 SERIES – Model 8X6-14T



EXPLODED VIEW



LG1818 REV. A

850 Series Model: 850CC/8X6-14T/4P	PEI _{CL} 0.95	Impeller Diameter: 14.000 in.
------------------------------------	------------------------	-------------------------------

850 SERIES – Model 8X6-14T



PARTS LISTING

Compatible Motor Frame Family			254JP, 286JP 324JP, 326JP (JP3)	364JP, 365JP 404JP, 405JP (JP4)	Material of Construction
Item	Description	Qty.	P/N	P/N	
Case Kit					
1	Case Kit ^{1,3}	1	355000K		Ductile Iron, ASTM A395
2	Case Plugs 1/4" MNPT	6	31005911		Steel
3	Case Plugs 1/2" MNPT				
4	Case Wear Ring	1	8055100		Bismuth Tin Bronze (Lead Free)
Impeller Kit					
5	Impeller, Only ⁴	1	5555400	5555600	Aluminum Bronze, ASTM B148
	Impeller, Kit ^{4,5}	1	5555400K	5555600K	Aluminum Bronze, ASTM B148
Back Pull Out Kit					
6	Impeller Bolt SHCS, 1/2-13 x 2.00 Lg	1	S14C500B00SH8A1		Stainless Steel
7	Impeller Washer	1	14417604	14417610	300 Series Stainless Steel
8	Seal Adapter ⁷	1	7102002K		300 Series Stainless Steel
9	Seal Adapter O-Ring -041 Buna	1	041B		Buna-N
10	Bracket Wear Ring	1	8055100		Aluminum Bronze, ASTM B148
11	Bracket/Motor Bolts HHCS, 5/8-11 x 1.50 Lg	4	14135008		Steel – Grade 5
12	Case/Bracket O-Ring -280 Buna	1	280B		Buna-N
13	Bracket ^{2,3}	1	2997800K		Ductile Iron, ASTM A395
14	Bracket Plug 1/2" MNPT				
15	Case/Bracket Bolts HHCS, 5/8-11 x 1.50 Lg	12	14135008		Steel – Grade 5
16	Impeller Spacer	1	14034607	14040307	300 Series Stainless Steel
17	Impeller Key	1	22056007	14060801	Stainless Steel
18	Sleeve, Kit ⁶	1	8243600K	8263600K	Bismuth Tin Bronze (Lead Free)
19	Sleeve O-Ring -126 Buna	2	47012604		Buna-N
	Sleeve O-Ring -132 Buna	1		47013206	Buna-N
20	Deflector	1	22020507	22032205	Neoprene
21	Mechanical Seal	1	See mechanical seal list for P/N		
22	Motor	1	Contact factory for P/N		

LG1828 REV. B

¹Case Kit includes item 2, 3, 4, 12, and 15

²Bracket Kit includes item 11, 14 and 20

³Part is available with epoxy coating of interior or interior + exterior. Specified part number is for uncoated part, contact factory for part numbers.

⁴Part is available with epoxy coating. Append 'PC' to the indicated part number when referring to the coated part

⁵Impeller Kit includes item 6, 7, 10, 16 and 17

⁶Sleeve Kit includes item 19

⁷Seal Adapter Kit includes item 9

850 Series Model: 850CC/8X6-14T/4P	PEI_{CL} 0.95	Impeller Diameter: 14.000 in.
---	------------------------------	--------------------------------------

GRS-17110-T-01

PAGE 4 OF 4



Copyright 2019 PSG®, a Dover® Company.

PSG® reserves the right to modify the information and illustrations contained in this document without prior notice. This is a non-contractual document.