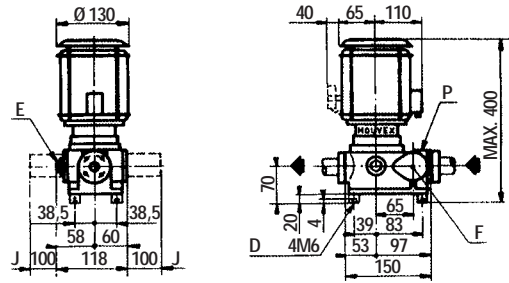


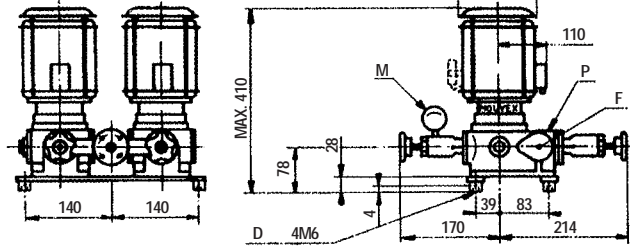
# TM SERIES - Mouvex Technology - Eccentric Disc pump

## ◆ AP Group

SINGLE UNITS



DOUBLE UNITS



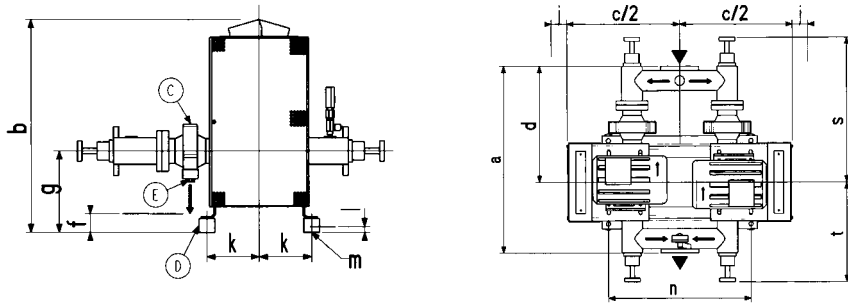
D	Rubber insulation
E	Bypass
F	Prefilter passage 1 mm
J	Release the filter cover
P	Plate pump
U	Motor
M	Manometer

## ◆ AB - AG - AF Groups

SINGLE UNITS

Single units	A	B	C	E	F	G	H	J maxi	M maxi	N	O	P	Q	R	S	T	kg
AB	210	156	170	20	2 x $\phi$ 12	113	415	270	$\phi$ 20	13	140	40	195	75	$\phi$ 70	$\phi$ 6,5/53	22
AG	275	200	180	25	2 x $\phi$ 13	137	510	400	$\phi$ 34	25	175	55	250	90	$\phi$ 100	$\phi$ 9/80	40
AF	300	240	205	28	4 x $\phi$ 12	138	571	400	$\phi$ 40	88	165	95	290	100	$\phi$ 120	$\phi$ 14/90	64

DOUBLE UNITS



C	Prefilter
D	Isolator
E	Emptying

Double units	a	b maxi	c	d	f	g	j	Double units	k	l	m	n	o	s	t	kg
AB	409	440	540	255	26	146	40	AB	86	10	4 M8	274	9	325	209	54
AG	583	575	700	362	40	200	55	AG	130	10	4 M10	450	11	452	311	74
AF	620	570	810	380	30	190	95	AF	145	10	4 M10	575	11	450	310	154



ZI la Plaine des Isles  
rue des Caillottes  
89000 AUXERRE - FRANCE  
T + 33.3.86.49.86.30  
F + 33.3.86.46.42.10  
contact@mouvex.com



Distributed by :

www.mouvex.com



SPEC SHEET 1004-001 E  
SECTION : 1000  
Effective : June 2012  
Replaces : New

# TM SERIES Mouvex Technology Eccentric disc pump

### Legendary ruggedness

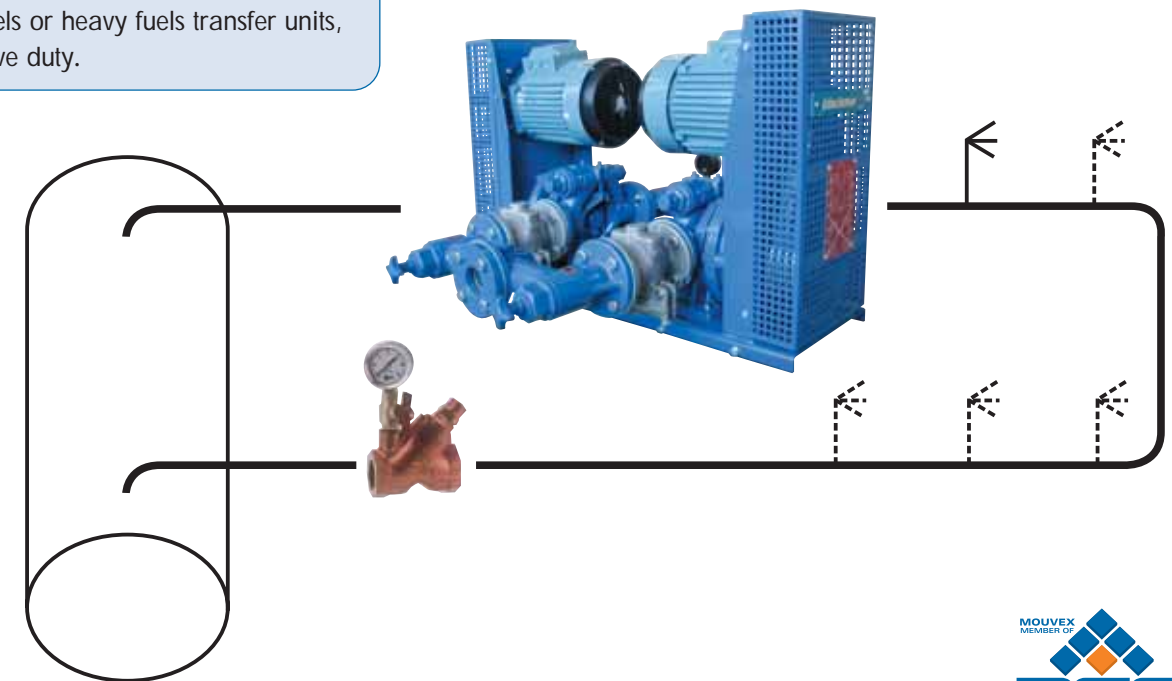
- Low pump rotation speed and self-wear compensation ensure long life span and preserved original performance over time.

### Demonstrated performance

- Self-priming (without foot valve), constant flow (despite variable viscosity or pressure) are essentials characteristics.

### The reassuring answer

- Adapted heating fuels or heavy fuels transfer units, designed for intensive duty.

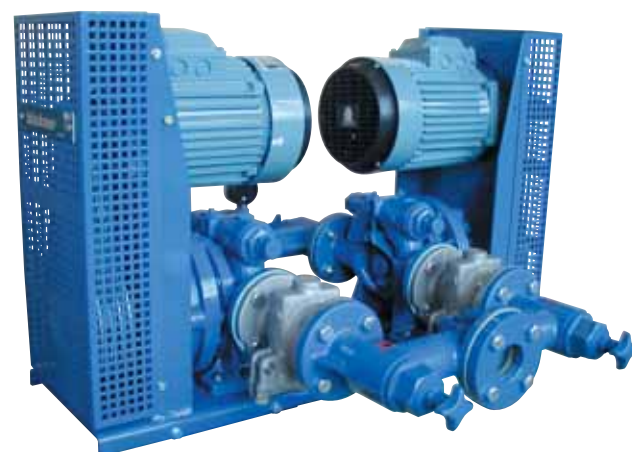


www.mouvex.com

Mouvex reserves the right to modify the information and illustrations contained in this document without prior notice. This is a non-contractual document.  
Printed in FRANCE by Filligrane  
© 2009 Mouvex

## TM SERIES - Mouvex Technology - Eccentric Disc pump

### ● Features



#### SINGLE PUMPING SETS

Positive displacement eccentric disc pumps, self priming. With integrated adjustable relief valve (except AP)

Perfect sealing by mechanical seal.

Direct drive (AP) or belt / pulley drive with housing.

#### DOUBLE PUMPING SETS

Sets made of two parallel systems connected by suction and the discharge pipes (check valves integrated to discharge pipes).

Each system includes an electric pumping set protected by a strainer and isolated by two valves. The two system are mounted on a common baseplate with insulating pods.

Such sets offer:

- The **safety** of failure-free operation, thanks to a double circuit.
- The **time saving** at the order and the installation.
- The **guarantee** of the material developed down to the smallest accessories by the constructor.

## TM SERIES - Mouvex Technology - Eccentric Disc pump

### ● Units type selection

#### FILLING THE TANK DAILY

Pump nominal flow can be including 5 or 10 times hourly consumption of powered burners.

#### FEEDING A RUNNING LOOP

Pump robustness ensures many years on continuous duty, 24 hours a day. Pump nominal flow rate should correspond to about 2 times the maximum consumption of all burners together. After last burner, put a Mouvex control valve (see specific brochure) which keep constant feeding and pressure in the loop, in despite of variable burners consumption.

#### ROOF TOP BOILER ROOM

Please consult our application department.



### ● Accessories

#### REGULATION VALVE

(view on specific manual)

Valve	Flow m <sup>3</sup> /h	Reference pressure (bar)						Tapped hole
		Spring						
		N° 0	N° 1	N° 2	N° 3	N° 4	N° 5	
N° 0,5	0 à 0,3	-	0,5 à 0,9	0,9 à 1,8	1,8 à 3	2,2 à 3,7	3,2 à 4,5	G 1/2
N° 1	0 à 1,5	0,35 à 0,75	0,75 à 1,6	1,6 à 3,1	2,4 à 4,6	4 à 6	-	G 1
N° 1,5	0,5 à 2,5	-	1,2 à 1,8	1,8 à 2,8	2,5 à 3,9	3,6 à 5,6	-	G 1 1/2
N° 2	0 à 15	-	0,5 à 1	1 à 2,2	1,2 à 3,2	1,7 à 4,7	2,5 à 6,5	G 2

#### PREFILTER

Essential to protect the pump against an accidental passage of foreign body.

All the prefilter could be flange directly on the suction flange of the pump, simplifying the assembly.

Pump	Prefilter
AP	Incorporate prefilter
AB	PF 25
AG	PF 40 AG
AF	PF 40 AF



#### BREAKER BOX

This unit is essential to the protection of the electric motors, it could, on request, include a relay for remote control by float switch or by pressure switch.

Do not omit to precise, relay on order, exact voltage of the motor network power.

NB : presence of contactor- breaker conditions our guarantee.

#### AUTOMATIC SWITCH BOX

Control box and protection for automatic start.

Pump Type	Flow l/h	Manometric total elevation bar	Manometric suction height bar	Hardware Motor kW	Code	
					Simple units	Double units
AP	150	4	0,5 bar Losses including charges	0,18	Albi*	Albi double*
	150	4		0,12	Albi mono*	Albi mono double*
	300	4		0,18	Amiens*	Amiens double*
	300	4		0,12	Amiens mono*	Amiens mono double*
AB	600	5		0,37	Biscarosse	Biscarosse double
	600	5		0,37	Biscarosse mono	Biscarosse mono double
	850	5		0,37	Boulogne	Boulogne double
	850	5		0,37	Boulogne mono	Boulogne mono double
	1200	5		0,37	Belfort*	Belfort double*
AG	1230	5		0,55	AG 350	AG 350 double
	1670	5		0,55	AG 460	AG 460 double
	2140	4,5		0,55	AG 600*	AG 600 double*
	2470	4	0,55	AG 700*	AG 700 double*	
AF	2850	4,5	0,75	AFTM 300 bis	AFTM 300 bis double	
	4400	4,5	1,1	AFTM 460 bis	AFTM 460 bis double	

\*Do not use for FOL N° 2  
For each variant (flow, heigh suction, temperature, viscosity...) consulting us.