



## Compressore a vite TYPHON II

La soluzione Multitalent da montare all'interno dei camion telaio

**SCHEDA TECNICA**  
**1401-004 I**

Categoria : 1401

In vigore : Agosto 2017

Sostituisce : Settembre 2016

### TYPHON II-20R:

1200 – 2000 giri/min D 

### TYPHON II-30R:

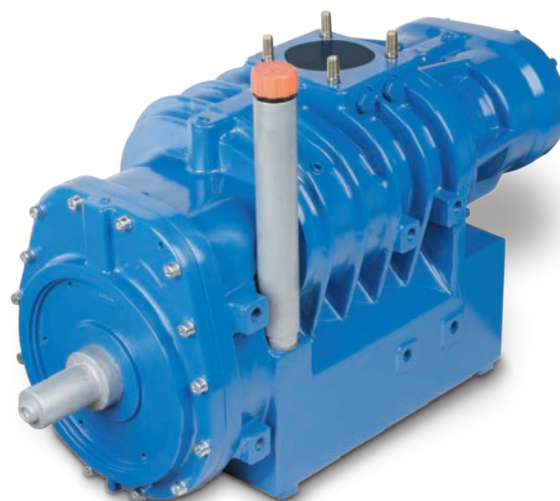
1800 – 3000 giri/min S 

#### Dimensioni :


L 664 x A 362 x P 280 mm


#### Peso :

143 kg




### TYPHON II-13R/15L:

780 – 1300 giri/min D 

o 900 – 1500 giri/min S 

### TYPHON II-19R/22L:

1170 – 1950 giri/min D 

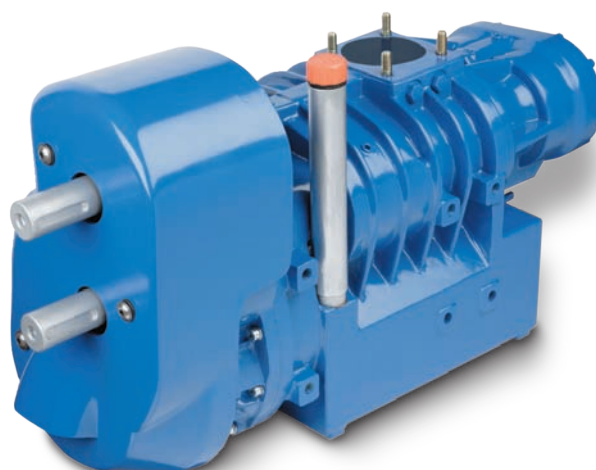
o 1320 – 2250 giri/min S 

#### Dimensioni :

L 799 x A 416 x P 295 mm

#### Peso :

173 kg



N / pressione o SP / aspirazione e pressione  
Portate 600 da 1130 m<sup>3</sup>/ora



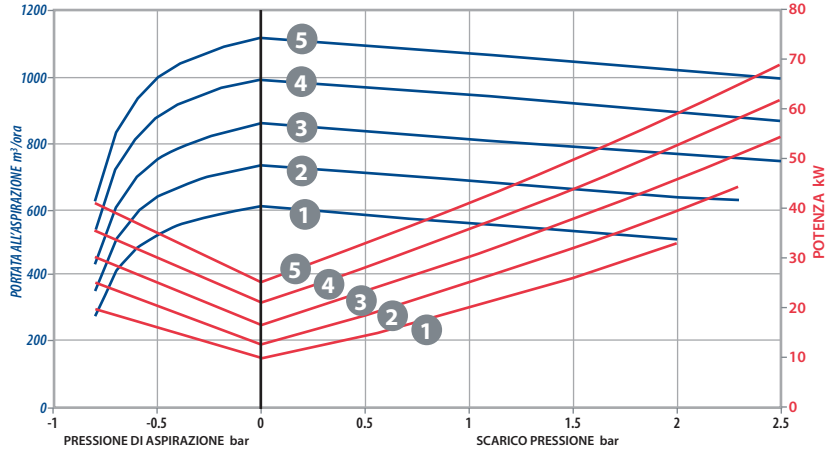
# Compressore a vite TYPHON II

La soluzione Multitalent da montare all'interno dei camion telaio

## Velocità Del Compressore (giri/min)

Versione	1	2	3	4	5
13R	780	910	1040	1170	1300
15L	900	1050	1200	1350	1500
19R	1170	1365	1560	1755	1950
20R	1200	1400	1600	1800	2000
22L	1320	1580	1800	2035	2250
30R	1800	2100	2400	2700	3000

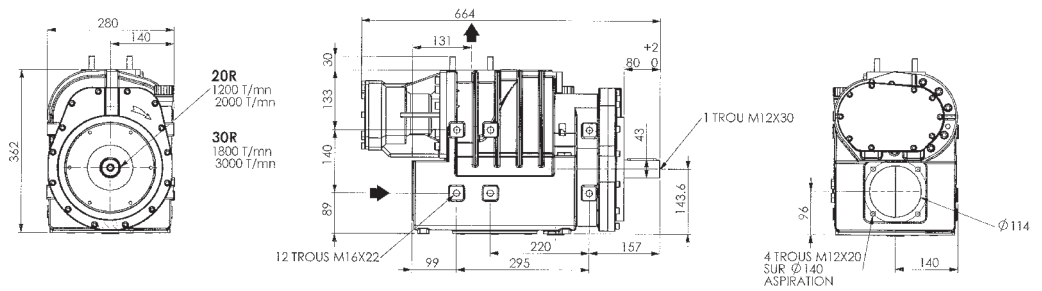
## Portata (m<sup>3</sup>/ora) / Potenza (kW)



## Coppia / Pressione (Nm)

Versione	Pressione (bar) a piena velocità		
	1.5	2.0	2.5
13R	370	430	510
15L	320	380	440
19R	250	300	350
20R	240	280	330
22L	220	260	300
30R	160	190	220

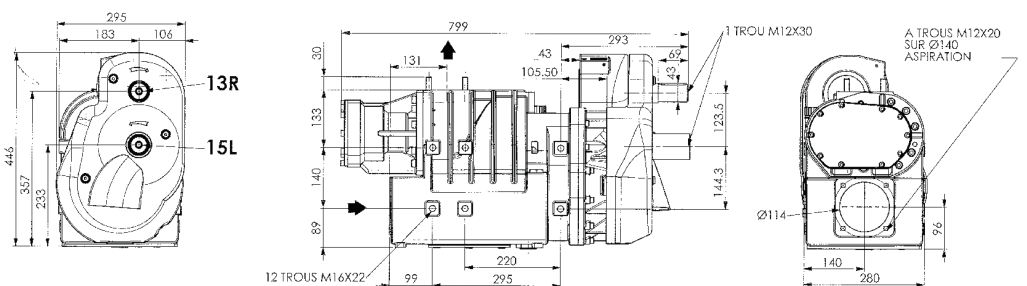
## TYPHON II Compressore 20R and 30R



## Coppia / Aspirazione (Nm)

Versione	Aspirazione -800 (mbar)
13R	308
15L	267
19R	211
20R	200
22L	182
30R	133

## TYPHON II Compressore + Invertitore 13R/15L and 19R/22L



a DOVER company



ZI la Plaine des Isles • 2 rue des Caillottes  
F-89000 AUXERRE - FRANCE  
Tel: + 33.3.86.49.86.30 • Fax: + 33.3.86.46.42.10  
contact@mouvex.com  
mouvex.com

Authorized PSG® Partner: