



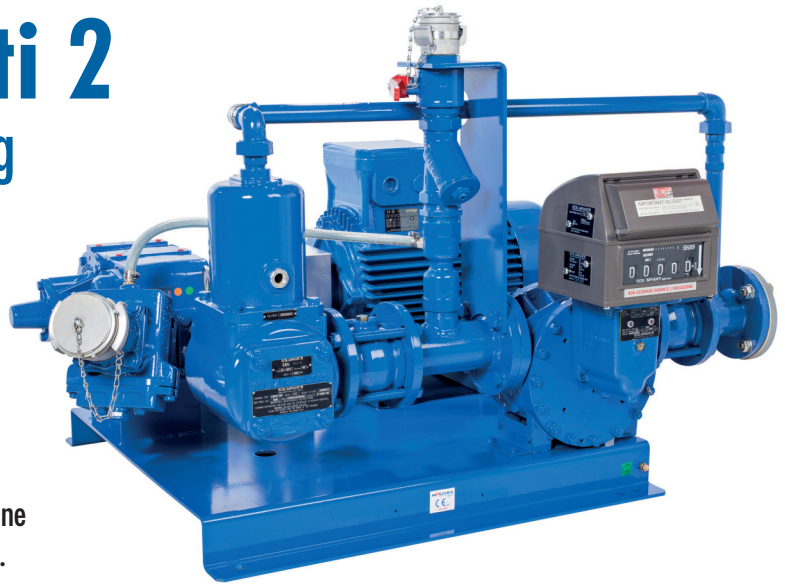
SPEC SHEET 1802-001 E
SECTION : 1800
Effective : December 2012
Replaces : April 2011

Centrex Multi 2

The optimized unloading

New upgrade integrating:

- ✓ More compact
- ✓ Product Return System with:
 - Low pressure drop
 - Reduced mixed volume
 - "Clean" draining valve
- ✓ Degassing outlet connected to the product line to avoid any return line to the storage tank.



Efficient:

- The constant flow rate generated by the vane pump ensures capacity of 60m³/h during the whole unloading process whatever is the storage design.

Easy to do business with:

- The new Product Return System will get back and count the product remaining inside the road tankers after every round trip.

Environmental friendly:

- No degassing vent.
- Self-priming pump allowing draining the suction hose.
- Draining hose on the Product Return System.

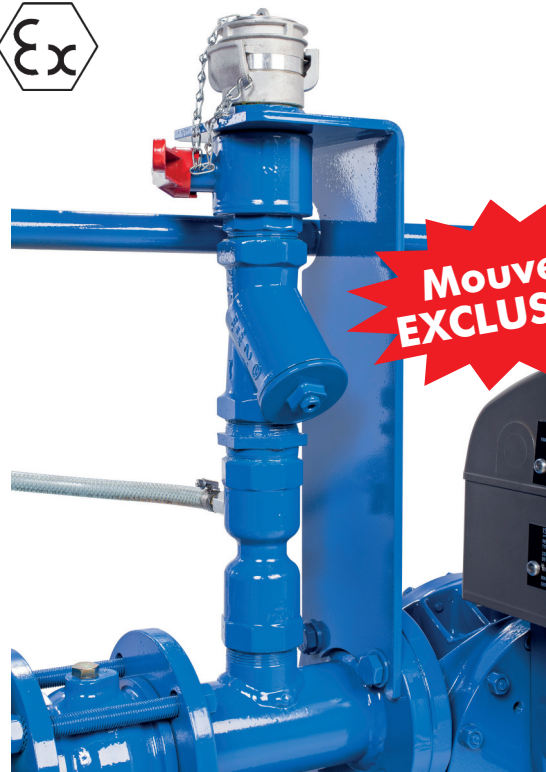
Reliable:

- Each Complete package already tested in our facilities.
- One strainer before the pump, one filter before the Meter, one filter on the Product Return System.

Adaptability:

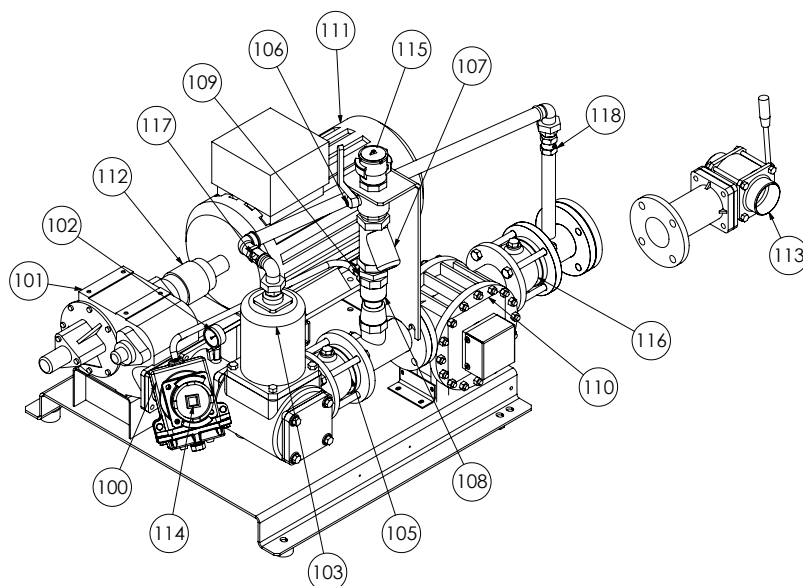
- Many options available.

Up to 60 m³/h - 4 bar



- ▲ The new Return Product system allows to take back and to count daily the products remaining in your road tankers at the end of each round trip.

• Conception



CENTREX MULTI 2 ME (Meter Electronic)	
Item	Description
100	Strainer
101	CC8.65 Pump
102	Pressure gauge
103	Filter / Air eliminator
105	Check Valve 1 bar
106	Valve (Product Return System)
107	Filter (Product Return System)
108	Check Valve (Product Return System)
109	Draining valve (Product return system)
110	Meter
111	Electric motor
112	Coupling
113	Valve SBL3 (option)
114	Inlet plug
115	Plug (Product Return system)
116	Check Valve 0.4 bar
117	Sight glass
118	No return Valve
Weight: 400 Kg	

• Working guideline

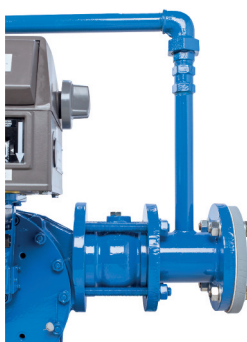
Unloading

- Select the storage tank to receive the fluid
- Connect the hose to the DN80 (114) connection
- Reset the Meter to 0 and insert the ticket in the printer if requested
- Open the bottom valves of the road tanker
- Open the truck chamber valve
- Start the pump
- Empty the Chamber
- Once the Meter is stopped, drain the hose by lifting it in order to count the remaining product
- Connect the next chamber
- At the end of the last chamber, do the same and stop the pump
- Close the DN 80 (114) connection

Product Return System

- Select the storage tank to receive the fluid
- Connect the end of the nozzle to the DN50 (115) connection
- Reset the Meter to 0 and insert the ticket in the printer if requested
- Open the valve (106)
- Start the pump of the truck and select the chamber to empty
- Once the meter is stopped, close the nozzle
- Drain the Product Return System thanks to the draining valve (109)
- Close the valve (106)
- Disconnect the nozzle
- Close the DN50 (115) connection

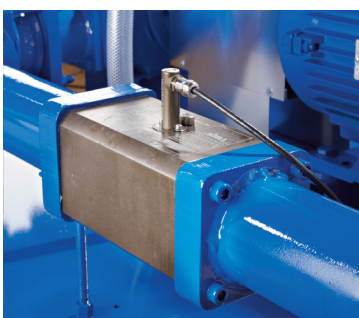
• Options



▲▲ Centrex Multi 2 M (Meter)



▲▲▲ Centrex Multi 2 ME (Electronic Meter)



▲▲▲ Centrex Multi 2 T (Turbine)

Meter

- ▲ ISOIL SBM150 Meter with mechanic VEDEER ROOT register
- ▲▲ ISOIL SBM150 Meter without register and with pulse transmitter
- ▲▲▲ ALMA DN80-80 Turbine

Construction

- ATEX or non ATEX

Outlet construction

- Straight
- With The 3 ways valve SBL

MOUVEX
Part of Pump Solutions Group

Mouvex reserves the right to modify the information and illustrations contained in this document without prior notice. This is a not-contractual document. 03/2013. Printed in FRANCE by Voluprint to Perrigny.

© 2013 Mouvex

A DOVER COMPANY

ZI la Plaine des Isles
rue des Caillottes
89000 AUXERRE - FRANCE
T + 33.3.86.49.86.30
F + 33.3.86.46.42.10
contact@mouvex.com

PSG
PUMP SOLUTIONS GROUP
A DOVER COMPANY

Distributed by :