

# Paint & Coatings

PRODUCT BROCHURE



Where Innovation Flows

CONSISTENT.  
EFFICIENT.  
SAFE.

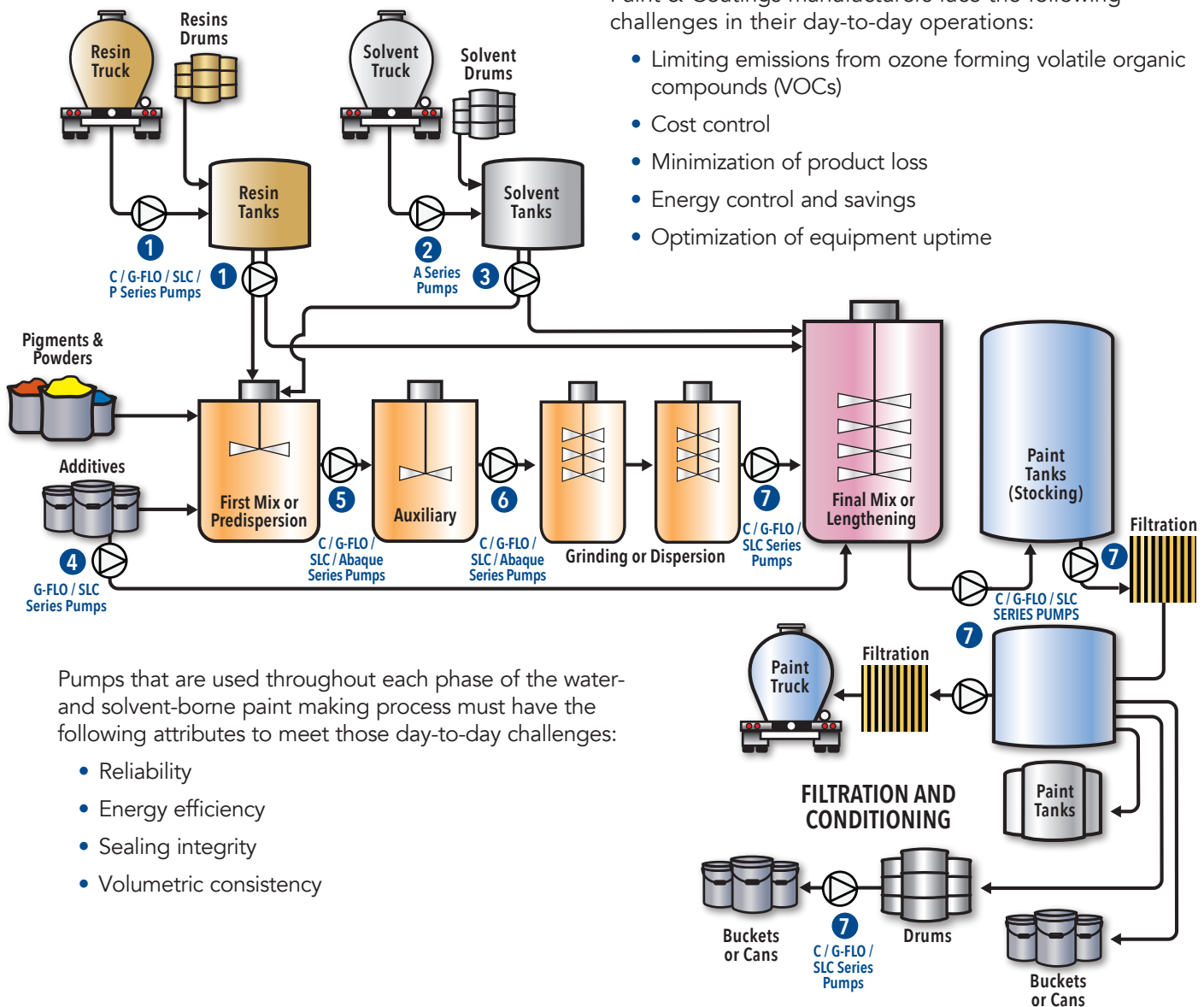
## Mouvex® Pump Technologies | The Solution for Your Paint & Coatings Manufacturing Process

Mouvex® features a variety of leading pump technologies that include eccentric disc, peristaltic (hose) and rotary vane pumps to meet virtually any application challenge throughout the paint and coatings manufacturing process.

### Paint & Coatings Manufacturing Challenges:

Paint & Coatings manufacturers face the following challenges in their day-to-day operations:

- Limiting emissions from ozone forming volatile organic compounds (VOCs)
- Cost control
- Minimization of product loss
- Energy control and savings
- Optimization of equipment uptime



Pumps that are used throughout each phase of the water- and solvent-borne paint making process must have the following attributes to meet those day-to-day challenges:

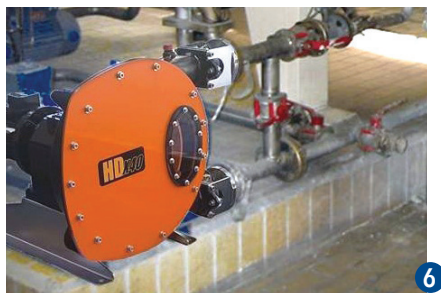
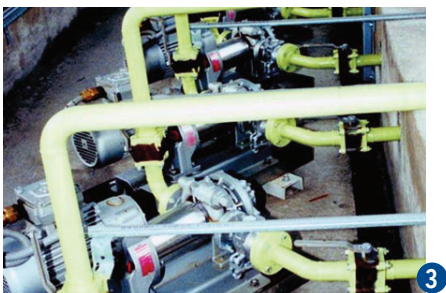
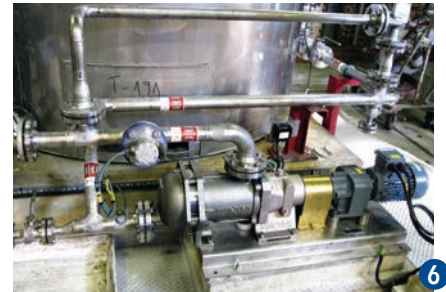
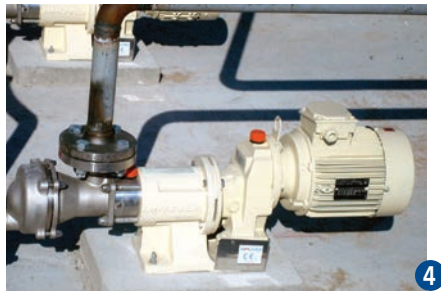
- Reliability
- Energy efficiency
- Sealing integrity
- Volumetric consistency



# Mouvex® Pumps |

## The Solution for the Challenges of Paint & Coatings Production

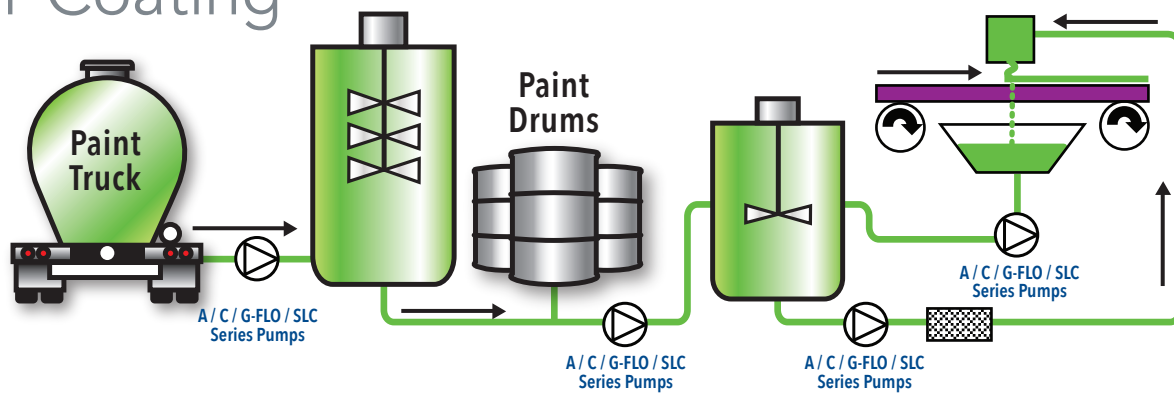
- Consistent performance (flow, pressure, and volumetric efficiency) due to unique wear compensation system
- Product recovery (pipeline stripping), means profit recovery
- Non-pulsating, smooth flow
- Self-priming
- Easy and simple to maintain
- High volumetric efficiency
- No bushings in contact with the liquid (no polymerization risk)
- Low shear
- No temperature intake
- Ability to run dry, even in hazardous areas
- ATEX certified
- Clean-in-Place (CIP) capable for the ultimate in convenience and cleanliness
- Unique seal-less principle, no magnets involved



QUALITY.  
CONTROL.  
UPTIME.

## Mouvex® Pump Technologies | The Solution for Your Paint & Coatings Process

### Roller Coating



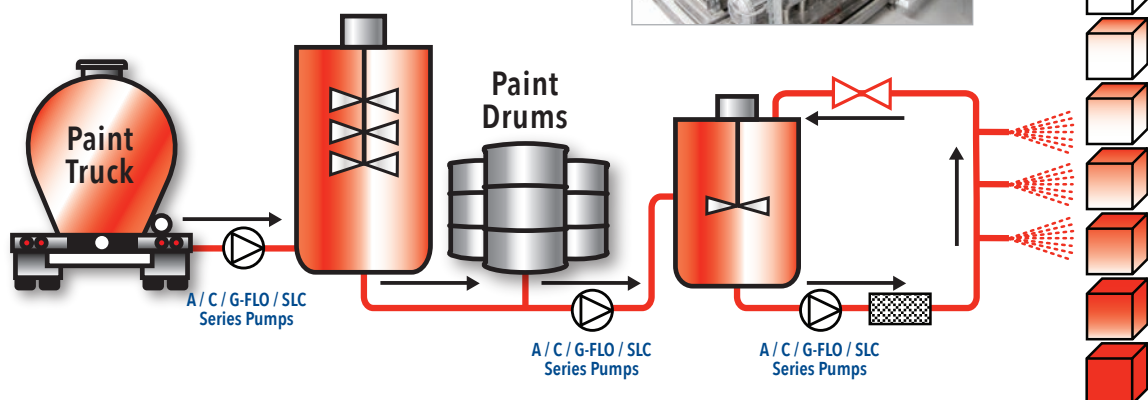
### Paint & Coatings User Challenges:

Paint & Coatings users face the following challenges in their day-to-day operations:

- Final quality of the coating or application of paint
- Cost control
- Minimization of product loss
- Energy control and savings
- Optimization of equipment uptime



### Spraying



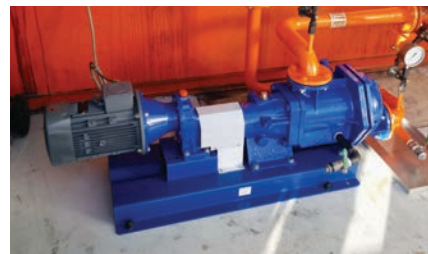
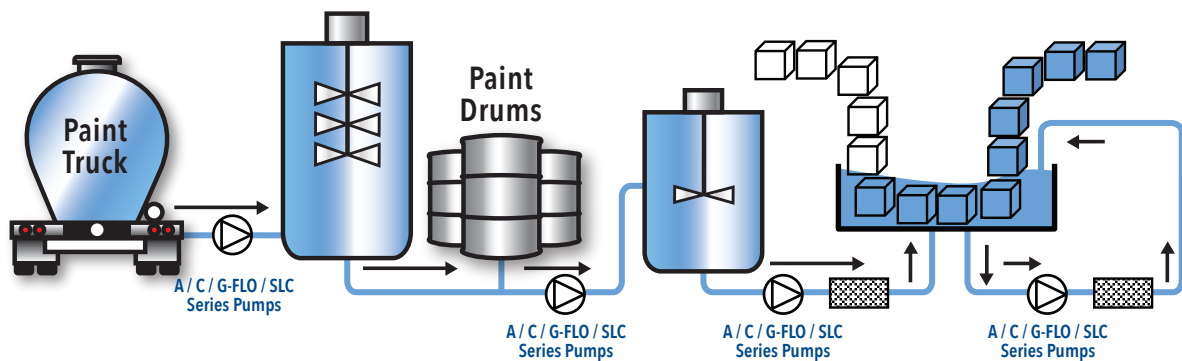


# Mouvex® Pumps |

## The Solution for the Challenges of Paint & Coatings Users

- Consistent performance (flow, pressure, and volumetric efficiency) due to unique wear compensation system
- Product recovery (pipeline stripping), means profit recovery
- Non-pulsating, smooth flow
- Self-priming
- Easy and simple to maintain
- High volumetric efficiency
- No bushings in contact with the liquid (no polymerization risk)
- Low shear
- No temperature intake
- Ability to run dry, even in hazardous areas
- ATEX certified
- Clean-in-Place (CIP) capable for the ultimate in convenience and cleanliness
- Unique seal-less principle, no magnets involved

### Dip Coating



RELIABILITY.  
INTEGRITY.  
CONSISTENCY.

## Mouvex® Pump Technologies | The Solution for Your Paint & Coatings Processes

Mouvex® features a variety of leading pump technologies that include eccentric disc, rotary vane, and peristaltic to meet virtually any application challenge throughout the Paint & Coatings production and usage process.

### A Series – Eccentric Disc Pump

The simple, reliable pump for basic fluids. Up to 55 m<sup>3</sup>/hr (242 gpm)



#### Applications:

- Solvents unloading
- Solvents transfer
- Additives Transfer

#### Features & Benefits:

- Line stripping
- Constant performance vs.
  - Pressure
  - Viscosity
  - Wear
- Easy and limited maintenance
- Runs in reverse, enabling the pumping back of various products
- Can transfer viscous, non-lubricating volatile or delicate fluids

### P Series – Rotary Vane Pump

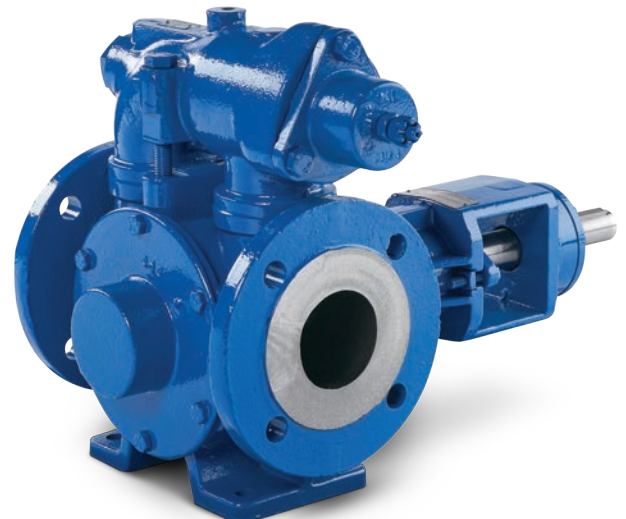
The heavy-duty pump for viscous resins unloading. Up to 110 m<sup>3</sup>/hr (484 gpm)

#### Applications:

- Resins unloading
- Transfer of non-lubricating, abrasive and corrosive products commonly found in Paint & Coatings applications

#### Features & Benefits:

- Line stripping
- Reversible
- On site replacement of wearing parts
- Easy and limited maintenance



## C Series – Eccentric Disc Pump

The versatile seal-less ductile pump for various applications. Up to 18 m<sup>3</sup>/hr (79.3 gpm)



### Applications:

- Resins transfer
- Predispersion outlet
- Grinding inlet
- Grinding outlet
- Stocking
- Conditioning

### Features & Benefits:

- Line stripping
- Product Recovery
- Constant performance vs.
  - Pressure
  - Viscosity
  - Wear
- No mechanical seals or bushings in contact with the liquid (no polymerization risk)
- Low shear

## G-FLO & SLC Series – Eccentric Disc Pumps

The seal-less stainless steel pumps for premium products. Up to 70 m<sup>3</sup>/hr (308 gpm)

### Applications:

- Resins transfer
- Predispersion outlet
- Grinding inlet
- Grinding outlet
- Stocking
- Conditioning

### Features & Benefits:

- Line stripping
- Product Recovery
- Constant performance vs.
  - Pressure
  - Viscosity
  - Wear
- No mechanical seals or bushings in contact with the liquid (no polymerization risk)
- Pulse-free, slip-free and low-shear flow even with varying viscosity and back pressure conditions



## Abaque® Series – Peristaltic (Hose) Pump

The pump able to withstand the most abrasive and solids loaded fluids. Up to 77 m<sup>3</sup>/hr (339 gpm)



### Applications:

- Pregrinding transfer
- Abrasive fluids transfer
- Moves everything from viscous, highly abrasive solutions to water without risk of damage to the pump
- Ideal for by-product and waste transfer

### Features & Benefits:

- High pressure
- Solid handling
- Low shear
- Easy and limited maintenance



PSG  
ZI la Plaine des Isles  
2 rue des Caillottes  
F-89000 Auxerre, France  
P: +33 (0) 3 86 49 86 30  
contact.mouvex@psgdover.com  
[psgdover.com/mouvex](http://psgdover.com/mouvex)



Where Innovation Flows

MX-80002-C-02

Authorized PSG® Partner:

Copyright 2022 PSG®, a Dover company