

Application | Transfer of Isocyanate

Liquid:	Isocyanate
Viscosity:	3 cSt
Temperature:	50°C (122°F)
Corrosive:	Yes
Flow:	0.23 m ³ /h (1 GPM)
Pump speed:	305 rpm
Pressure:	10 bars (145 psi)
Equipment:	1 x SLC1
Competition:	None



Issues |

User produces and sells paints and varnishes for the automotive industry.

The two main areas of activity are:

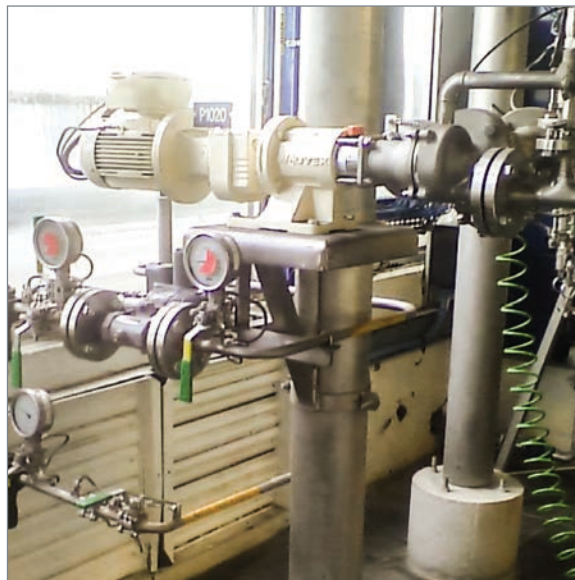
- Paints for body repair
- Paints for car makers and OEM

Mouvex® Solution

SLC1 Eccentric Disc Pumps

The customer likes:

- Self priming
- Total containment
- Cleaning ability



PSG
ZI la Plaine des Isles
2 rue des Caillottes
F-89000 Auxerre, France
P: +33 (0) 3 86 49 86 30
contact.mouvex@psgdover.com
psgdover.com/mouvex