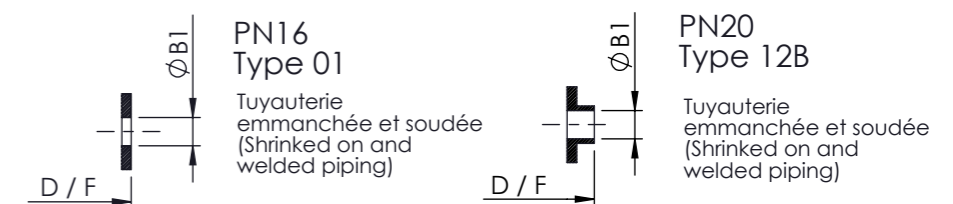
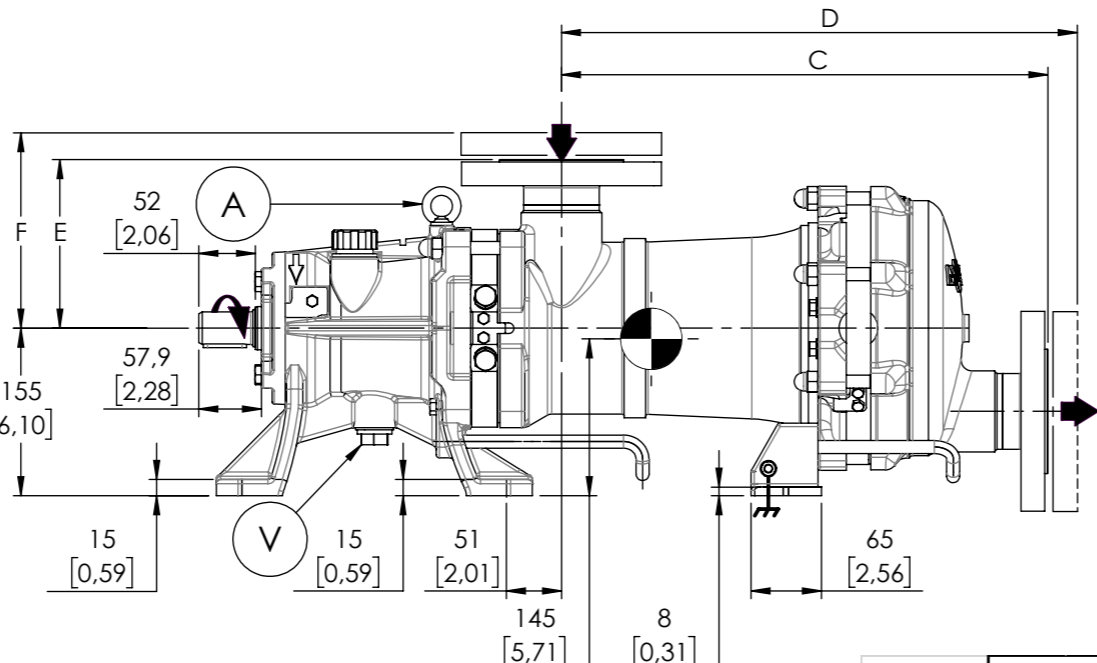
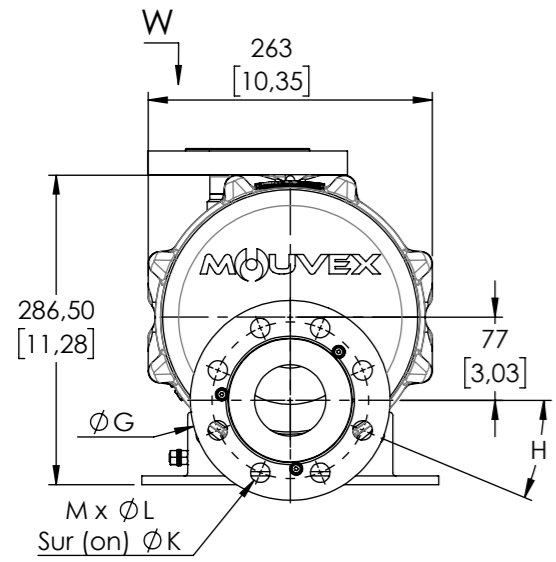
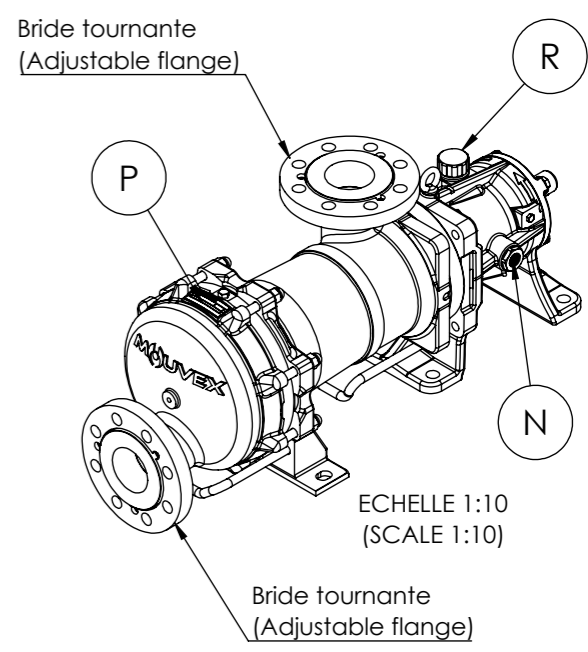
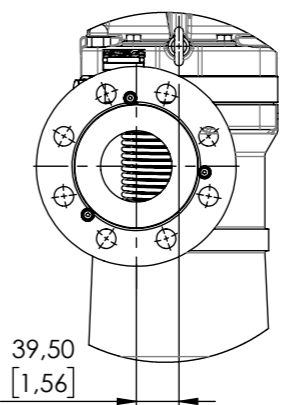
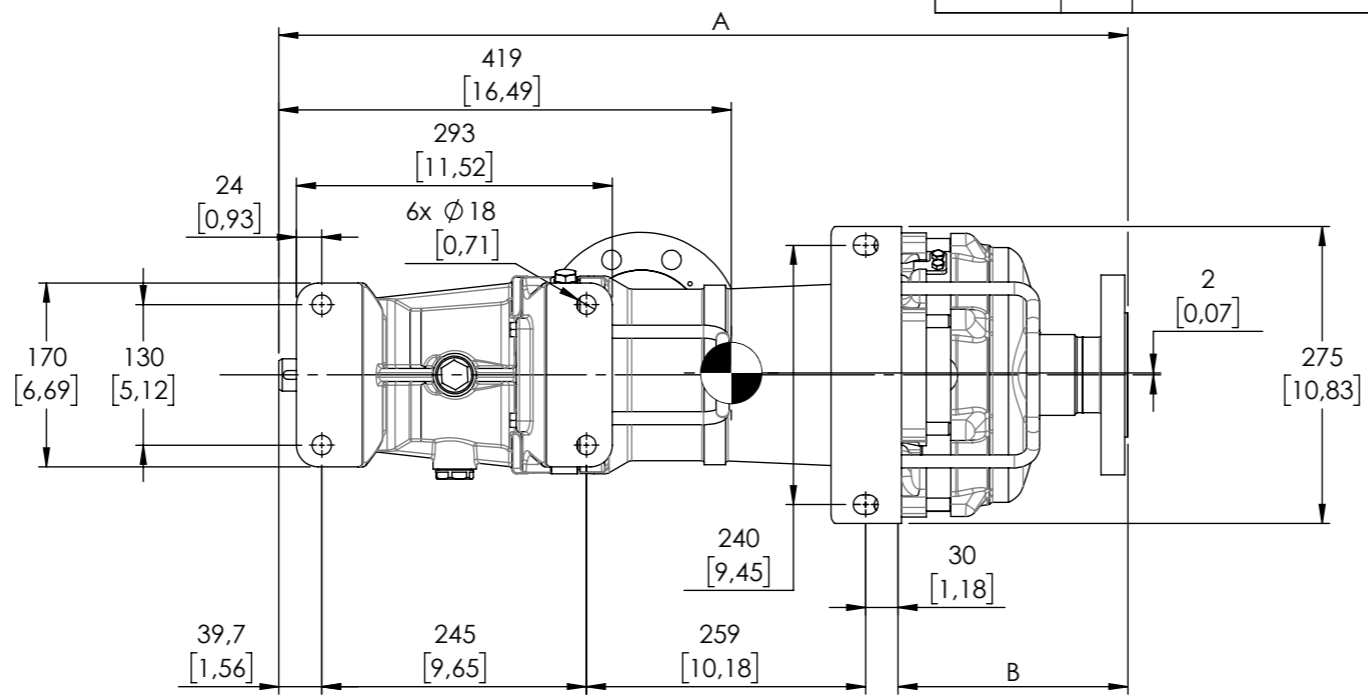
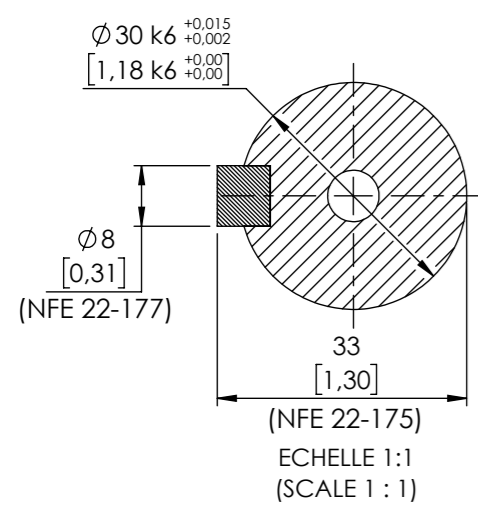


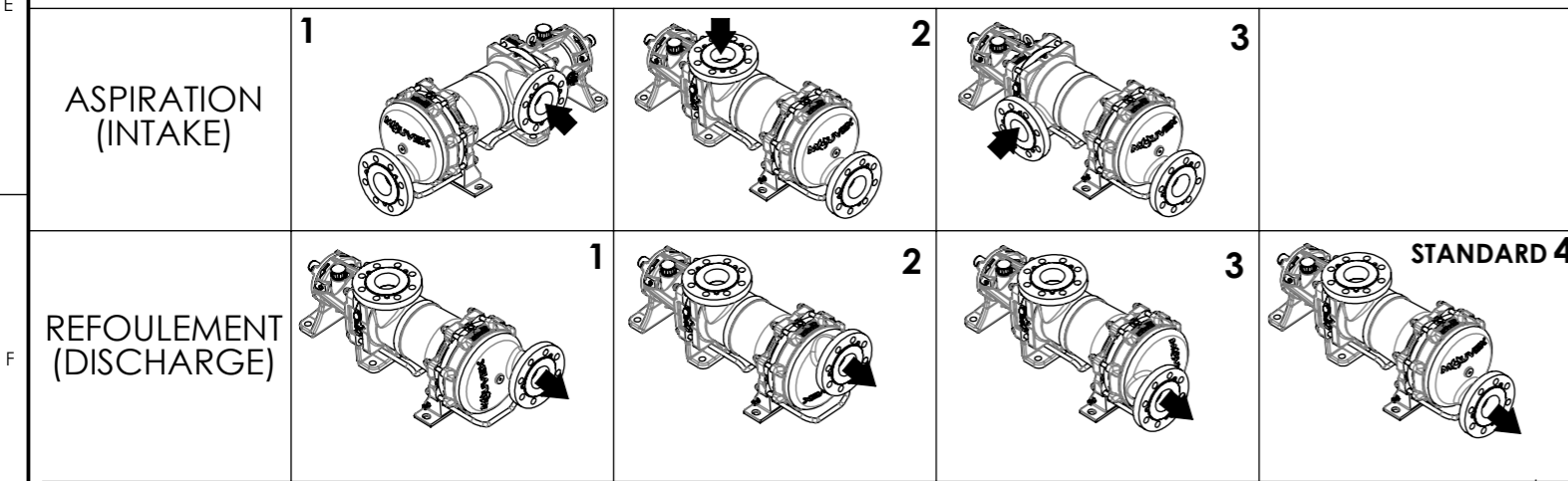
REVISIONS		
ECN	REV.	DESCRIPTION
	A	SEND TO PRODUCTION

Pompe G-FLO 15 Avec Brides Tournantes Pump G-FLO 15 with Rotating Flanges



P	Plaque pompe (Pump's name plate)
R	Remplissage / Reniflard (Filling / Breather)
V	Vidange (Drain)
N	Niveau d'huile (Oil level)
A	Anneau de levage (Lifting ring)

POSITIONS POSSIBLES (POSSIBLE POSITIONS)



	BRIDES (FLANGES)													
	DN	A	B	ØB1	C	D	E	F	ØG	ØK	ØL	M (nb holes /trous)	H (Deg)	Masse -kg- (Weight -lb-)
PN16 (EN 1092-1)	65	786	213	77,5	450	470	156	176	185	145	18	8	22.5°	90 [199]
PN20 (ANSI/ASME B16.5)	65	786	213	74,7	450	479	156	185	178	140	19	4	45°	90 [199]

UNLESS OTHERWISE SPECIFIED, ALL DIMENSIONS ARE IN mm

NAME	RVB	DATE	2021-07-20	PROJECTION FIRST ANGLE
DRAWN	EGK	DATE	2021-10-21	
APPV'D				WEIGHT: -

PSG a MOVEX company

Mouvex Z.I. Plaine des Isles
Rue des Caillottes
89000 AUXERRE - FRANCE
☎ (33) 3.86.49.86.30 - 📠 (33) 3.86.46.42.10

DRAWING N°: **M002070A3** REV: **A**

SCALE: 1:7 DO NOT SCALE DRAWING SIZE: A3 SHEET 1 OF 1