

Mouvex® is one of the leading global suppliers of oil-free screw compressors for dry bulk transport tankers.

A wide range of machines providing airflow from 250 to 1500 m³/hr (147 to 880 cfm) against 2.5 bar (36 psi).

Mouvex® has developed modular systems, cooled and non-cooled, fitted with common accessories for PTO direct drive systems that can be mounted inside the truck frame regardless of the compressor type. The screw compressor packages can be easily installed onto all truck manufacturers chassis. Optional drive systems include pulley (V-belt) driven, hydraulic drive, electrical motor or engine drive. Mouvex screw compressors safely convey a wide range of bulk products ranging from fine powder to granulates.

- Cement
- Flour
- Lime
- Cereals
- Calcium
- Sand
- Plastic Pellets
- Gravel
- Animal Food



Blackmer®

Chemical products are often shear sensitive, corrosive and dangerous to transport and unload.

This requires environmental regulations and safety standards be followed. In accordance with the regulations, Mouvex® and Blackmer® offer two alternatives:

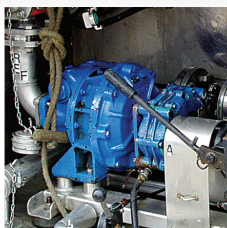
1 Unloading by compression (no part is in contact with the pumped product).

The B200 and Enterprise range of compressors provide airflow rate of 50 to 200m³/hr (29.4 to 118 cfm) at 2.5 bar (36 psi), and offer simple and effective solutions to the most difficult applications.

2 Unloading by pumping.

Mouvex and Blackmer offer a variety of different pumping technologies in cast iron or stainless steel (vane pumps, Mouvex technology eccentric disc pumps) which can be easily incorporated into mobile or stationary systems. The flow rate of up to 60m³/hr (265 gpm) offers economical and suitable solutions for the transfer of the simplest to the most demanding products.

- Solvents
- Acids
- Bases
- Additives
- Liquid Waste
- Liquid Fertilizers
- Fertilizers
- Detergents
- Diesel Exhaust Fluid
- Urea



MOUVEX®

ZI la Plaine des Isles • 2 rue des Caillottes
F-89000 AUXERRE - FRANCE
T: + 33.3.86.49.86.30 • F: + 33.3.86.46.42.10
contact@mouvex.com
mouvex.com

Blackmer®

PSG® Grand Rapids
1809 Century Avenue SW
Grand Rapids, MI 49503-1530 USA
T: +1 (616) 241-1611 • F: +1 (616) 241-3752
blackmer.com



Where Innovation Flows

MOUVEX®

Blackmer®

BITUMEN

Bitumen and its derivatives are very difficult products to transport and unload (e.g., temperature – viscosity – safety). Mouvex® and Blackmer® offer three alternatives:

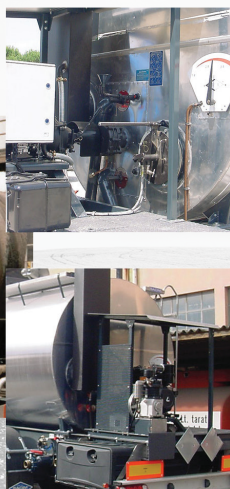
- AM NOYEE offers a complete and multi-functional solution that does not require a reheating system. The system enables loading, mixing, unloading, transfer and flushing. The AM NOYEE concept has the pump submerged into the product and provides 40m³/hr (176 gpm) at 3.5 bar (50 psi). Maximum product temperature 200° C (392° F).
- Unloading by compression (no part is in contact with the pumped product).

The B200 and Enterprise compressors provide airflow rate up to 200m³/hr (118 cfm) at 2.5 bar (36 psi), and offer simple and effective solutions for the most difficult applications.

- Or unloading by pumping.

The Mouvex P Series, CC8 and Blackmer NP range of vane pumps have optional jackets or electric cartridge heating systems that can be easily incorporated into mobile or stationary systems. Flow rates up to 80m³/hr (352 gpm) at 12 bar (175 psi).

- Heavy Fuel
- Emulsions
- Bitumen
- Fluxes
- Elastomer Bitumen



MOUVEX®

ZI la Plaine des Isles • 2 rue des Caillottes
F-89000 AUXERRE - FRANCE
T: + 33.3.86.49.86.30 • F: + 33.3.86.46.42.10
contact@mouvex.com
mouvex.com

Blackmer®

PSG® Grand Rapids
1809 Century Avenue SW
Grand Rapids, MI 49503-1530 USA
T: +1 (616) 241-1611 • F: +1 (616) 241-3752
blackmer.com



Where Innovation Flows

PSG
a DOVER company

MOUVEX®

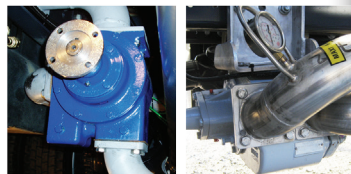
Blackmer®

ENERGY

Mouvex® and Blackmer® are the global leading manufacturers of the original vane pumps recognized for high quality, long service life and high performance pumps.

They offer the largest range of pumps available in the market, to meet all customer expectations and Energy applications. Energy transfer applications include gasoline, fuel oil, kerosene, home heating oil, biofuels, lube oils and many other petroleum products. Mouvex and Blackmer can provide flow capacities from 30 up to 92 m³/h (132 to 405 gpm). Fluids or viscous products ranging from light biodiesel to heavy fuels or lubricants can be pumped in either metered or non-metered distribution systems. Pumps like the well known Mouvex CC8 and Blackmer's TXD, TXH and HXL pump models will satisfy the most demanding applications.

- Petroleum Products
- Diesel Fuel
- Home Heating Oil
- Kerosene
- Biofuel or Biodiesel
- Ethanol
- Heavy Fuel
- Mineral Oil
- AdBlue®



MOUVEX

ZI la Plaine des Isles • 2 rue des Caillottes
F-89000 AUXERRE - FRANCE
T: +33.3.86.49.86.30 • F: +33.3.86.46.42.10
contact@mouvex.com
mouvex.com

Blackmer

PSG® Grand Rapids
1809 Century Avenue SW
Grand Rapids, MI 49503-1530 USA
T: +1 (616) 241-1611 • F: +1 (616) 241-3752
blackmer.com

Where Innovation Flows

PSG
a DOVER company

Specially designed for food products, Mouvex® solutions are adapted to meet the transport hygienic demands as well as those of unloading delicate and shear sensitive products. Mouvex offers two alternatives:

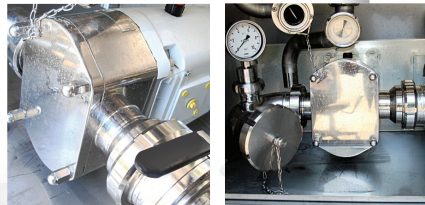
- Either unloading by compression (no part is in contact with the pumped product)

The B200 oil-free screw compressor can be directly mounted to the PTO. The screw compressors provide clean compressed air free of all contaminating particles and provide airflow rate of 200m³/hr (118 cfm) at 2.5 bar (36 psi).

- Or unloading by pumping

The Stainless Steel BLK 4T lobe pump is easy to clean and ensures the smooth transfer of products up to 42m³/hr (185 gpm) at 7 bar (100 psi).

- | | |
|-----------------|-------------|
| • Glucose Syrup | • Vegetable |
| • Concentrate | • Oil |
| • Fruit Juice | • Brine |
| • Chocolate | • Blood |



BLK4T

B200



LPG

Blackmer® is the leading global provider of equipment to service both mobile and stationary LPG applications and Transfer installations.

Blackmer's high quality, UL Listed pumps and reciprocating compressors are manufactured in their Grand Rapids, Michigan, USA factory following stringent ISO 9001:2008 specifications. LPG applications include metered deliveries from bobtails, custody transfer of transport trailers, vapor recovery of storage tanks, dispensers and many more. Blackmer LGL pumps, truck mounted TLGLF pumps and LB reciprocating compressors are used in all liquid transfer and vapor recovery applications. Blackmer LPG pumps are built with the industry-leading patented cavitation suppression liners. PTO, hydraulic drive and base mounted electric motor drive system may be used on all pump and compressor installations. All products come with an industry-leading warranty to provide worry free service life, excellent performance and the highest level of satisfaction.



LB161

X3

LGLD2

- Propane
- Butane
- Butane/Propane Mixture
- NH₃
- Other Liquefied Gases



PSG® Grand Rapids
1809 Century Avenue SW
Grand Rapids, MI 49503-1530 USA
T: +1 (616) 241-1611 • F: +1 (616) 241-3752
blackmer.com

Where Innovation Flows

