



INSTRUCTIONS 1074 e

Section	
Effective	April 2015
Replaces	June 2013

Original instructions

Micro C & SLS pumps

***Additional instructions
for equipment in accordance
with the 3-A health standards requirements***



Z.I. La Plaine des Isles - F 89000 AUXERRE - FRANCE
Tel. : +33 (0)3.86.49.86.30 - Fax : +33 (0)3.86.49.87.17
contact@mouvex.com - www.mouvex.com

Your distributor :

1. PUMP CHOICE

Micro C and SLS pumps (in stainless steel construction) can be in accordance with the 3-A health standards requirements. Nevertheless, it is necessary to restrict the choice of alternatives to the following values.

1.1 Seals

SLS12 i - SLS18 i - SLS24 i - SLS36 i :

- L FKM seals.

Micro C 125 i - Micro C 250 i - Micro C 500 i - Micro C 800 i - SLS1 i - SLS2 i - SLS3 i - SLS 4 i - SLS 8 i :

- FKM O-Ring seals.

1.2 Flanges

Flanges and connections should be chosen among the models below (depending on available options on the pumps) :

- DIN11864-BF-A,
- CLAMP (ISO 2852) ^(a),
- DIN11851 ^(a),
- CLAMP ASME BPE-2009 ^(a).

^(a) NOTICE : These connections can be used on 3-A certified pumps only with the use of specific seals. You can contact our Technical Services to ask for any information you require.

1.3 Bellows

- bellows in 316 Ti.

1.4 Bellows monitoring system

Grease-lubricated transmission (Micro C 125 i - Micro C 250 i - Micro C 500 i - Micro C 800 i) :

No specific requirements.

Oil-lubricated transmission (SLS1 i - SLS2 i - SLS3 i - SLS 4 i - SLS 8 i - SLS12 i - SLS18 i - SLS24 i - SLS36 i).

SLS1 i - SLS2 i - SLS3 i - SLS 4 i - SLS 8 i - SLS12 i - SLS18 i - SLS24 i - SLS36 i pumps should be fitted with bellows monitoring system.

1.5 Orientation ports

The ports must be oriented so that the pump remains naturally drainable.

1.6 Motor flange

Micro C 125 i - Micro C 250 i - Micro C 500 i - Micro C 800 i - SLS1 i - SLS2 i - SLS3 i :

- with foot.

2. SPARE PARTS

When ordering spare parts, it is necessary to note that these spare parts are intended to be mounted on pumps that meet 3-A health standards requirements.

3. PUMPING SETS

To respect 3-A health standards requirements, the legs of the pumping units must be selected to provide a minimum distance of 101,6 mm between the floor and the lowest part of the group (base plate, pump, motor...).

4. SPARE PARTS REPLACEMENT

4.1 Seals

Seals are designed for use in normal conditions intended for use in food process. In order to assure a perfect sealing on Micro C and SLS pumps we recommend to :

- do an inspection of the seals every three months (this time could be shorter if using the pump in hard conditions. Contact the manufacture for advice if necessary),
- replace the pump sealing every two years (refer to the pump Instructions for the replacement of the seals).

Are considered as defects requiring replacement of seals :

- scratch,
- break,
- hole,
- permanent deformation of the seal.

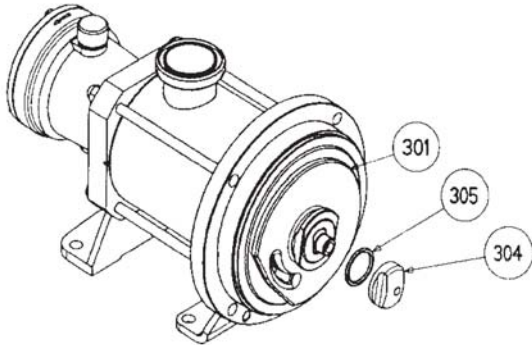
4. SPARE PARTS REPLACEMENT (continued)

4.2 Cleaning of threads

SLS1 i - SLS2 i - SLS3 i - SLS12 i - SLS18 i - SLS24 i - SLS36 i :

When disassembling the piston nut **304**, if the enclosed thread surfaces have become soiled, we recommend cleaning them as follows :

- clean the inner thread by washing, rinsing and sterilizing the whole part (i.e. with a steam sterilization),
- remove any impurities from the external threads by washing with a brush followed by rinsing with a bactericide solution before reassembly.



Micro C 125 i - Micro C 250 i - Micro C 500 i - Micro C 800 i - SLS 4 i - SLS 8 i :

When disassembling the piston screw **309**, if the enclosed thread surfaces have become soiled, we recommend cleaning them as follows :

- remove any impurities from the external threads on the bellows hub by washing with a brush, followed by wash and rinse the inner thread with a bactericide solution (for example by immersing the transmission in a bactericide solution, beforehand by blocking the vent of the transmission with a suitable plug),
- remove any impurities from the screw threads by washing with a brush followed by rinsing with a bactericide solution before reassembly.

