



INSTRUCTIONS 1003-P00 e

Section	1003
Effective	March 2017
Replaces	September 2015

Notice originale

Wear limits of parts pumps

Series A & TM

(mm)

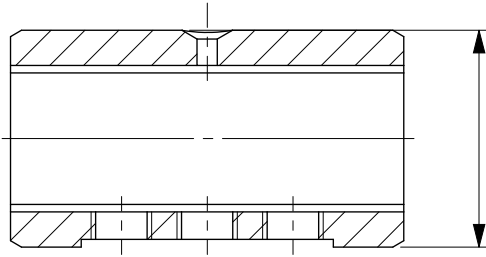


Z.I. La Plaine des Isles - F 89000 AUXERRE - FRANCE
Tel. : +33 (0)3.86.49.86.30 - Fax : +33 (0)3.86.49.87.17
contact@mouvex.com - www.mouvex.com

Your distributor :

PISTON BEARING

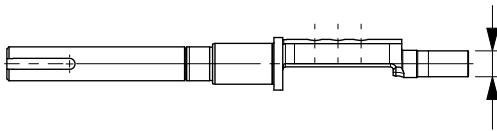
Check the outer diameter limit of the piston bearing.



Pump	Piston bearing	
	Origin	Mini
AB - AZ	23,947	23,847
AD	30,947	30,847
AG	29,947	29,847
AF TM	31,936	31,836

PUMP SHAFT

Check the bare shaft limit.

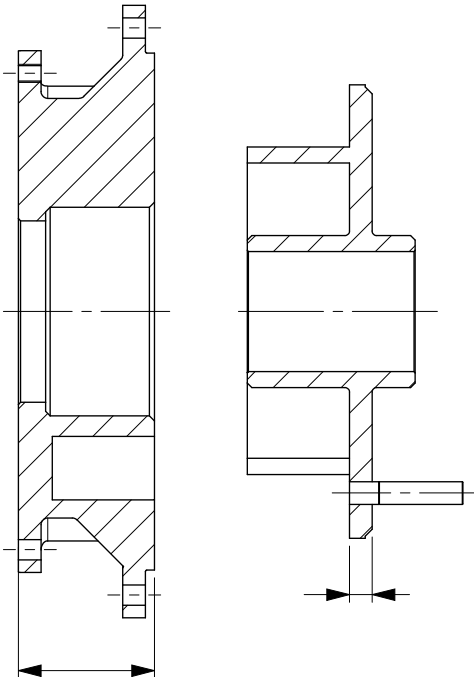


Pump	Shaft	
	Origin	Mini
AB - AZ	10,966	10,866
AD	13,966	13,866
AG	13,966	13,866
AF TM	16,966	16,866

CYLINDER & PISTON

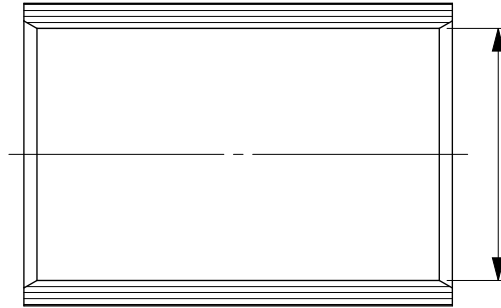
Cylinder

Piston



Pump	Cylinder		Piston	
	Origin	Mini	Origin	Mini
AB - AZ	17,85	17,00	5,93	5,00
AD	34,90	32,60	5,95	4,40
AG	32,90	32,00	5,95	4,00
AF TM	41,90	39,60	6,95	5,20

BUSHINGS



Pump	Ø piston bushing 303	
	Origin	Maxi
AB - AZ	24,12	25,12
AD	31,14	32,64
AG	30,14	31,64
AF TM	32,25	33,75

Pump	Ø front cover bushing 415	
	Origin	Maxi
AF TM	17,12	18,12

Pump	Ø manifold bushing 716	
	Origin	Maxi
AD	14,07	15,07

Pump	Ø cylinder bushing 204	
	Origin	Maxi
AB - AZ	11,05	11,55
AG	14,10	15,10