



**INSTRUCTIONS 1011-M00 e**

Section	1011
Effective	May 2004
Replaces	IT 112

Translation of the  
original instructions

# *How to position wedges and hoist screw*



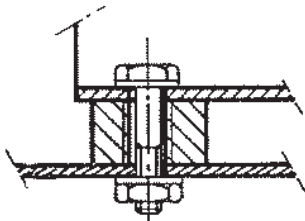
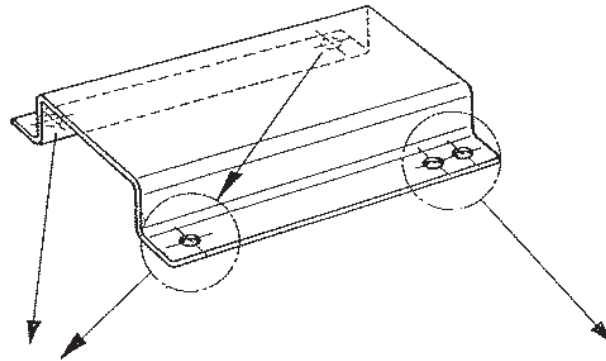
Z.I. La Plaine des Isles - F 89000 AUXERRE - FRANCE  
Tel. : +33 (0)3.86.49.86.30 - Fax : +33 (0)3.86.49.87.17  
contact@mouvex.com - www.mouvex.com

Your distributor :

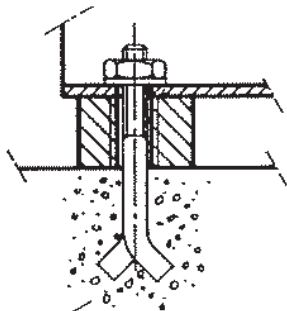
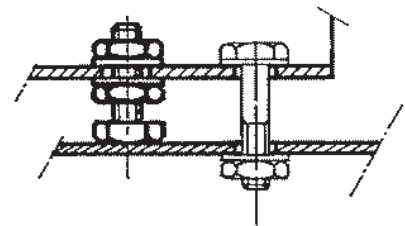
# HOW TO POSITION WEDGES AND HOIST SCREW

We supply :

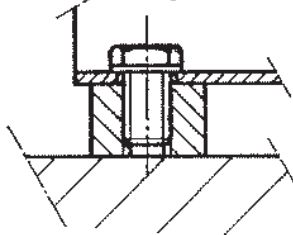
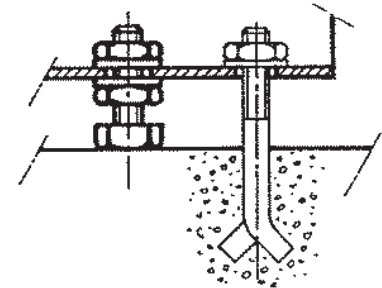
- 3 wedges 30 mm thick with screws  $\varnothing$  14 mm and washers
- complete hoist screw



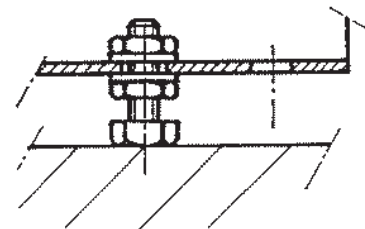
UNIT ON BASEPLATE



ANCHORED UNIT



NON-ANCHORED UNIT



If baseplate is flat, wedges and hoist screw might be not used.